

Repair Lines on Private Land

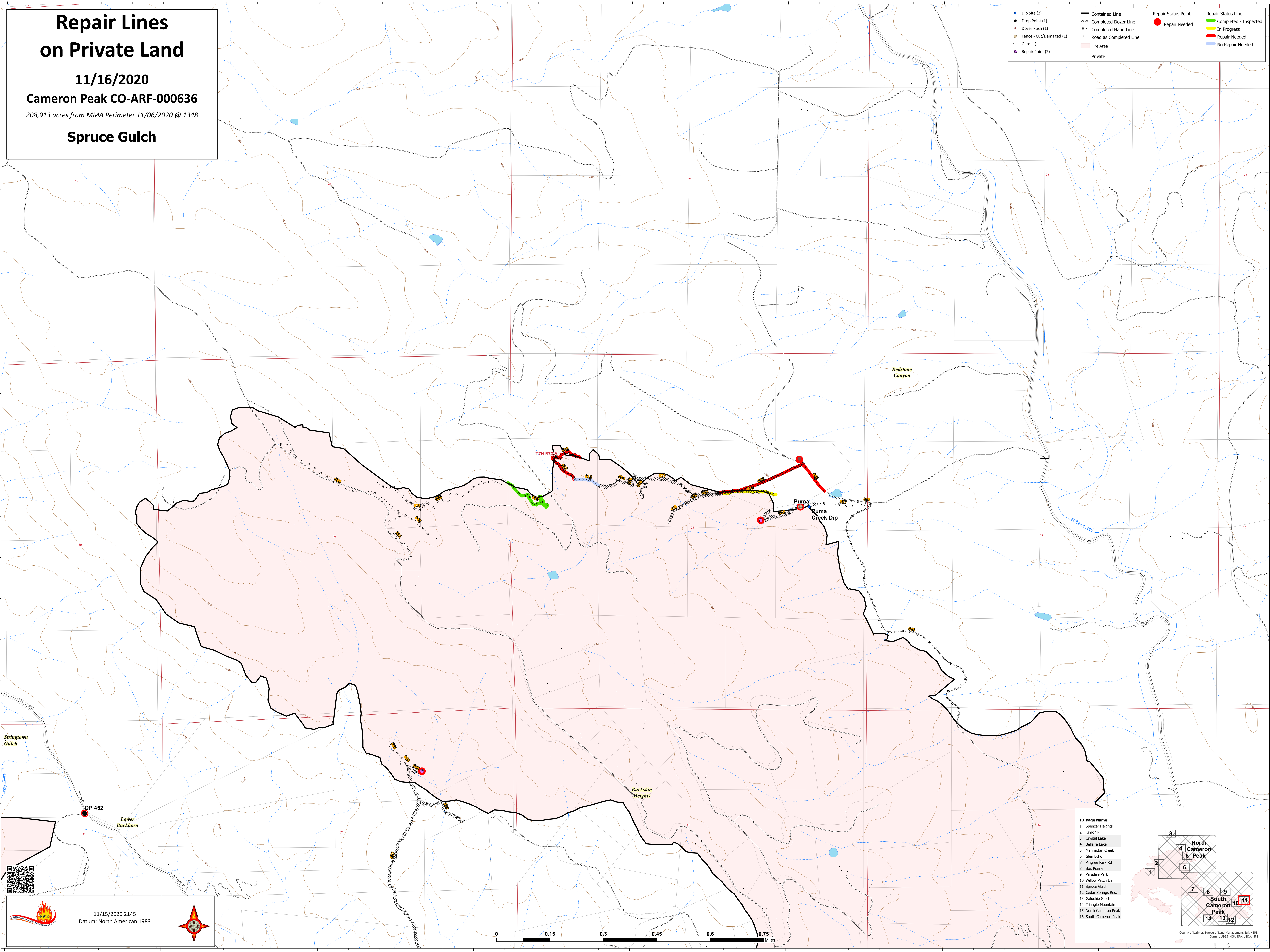
11/16/2020

Cameron Peak CO-ARF-000636

208,913 acres from MMA Perimeter 11/06/2020 @ 1348

Spruce Gulch

● Dip Site (2)	— Contained Line	● Repair Status Point	— Repair Status Line
● Drop Point (1)	— Completed Dozer Line	● Repair Needed	— Completed - Inspected
● Dozer Push (1)	— Completed Hand Line	● In Progress	— In Progress
● Fence - Cut/Damaged (1)	— Road as Completed Line	● Repair Needed	— Repair Needed
— Gate (1)	— Fire Area	● No Repair Needed	— No Repair Needed
● Repair Point (2)	— Private		



Stringtown Gulch

DP 452

Lower Buckhorn

11/15/2020 2145
Datum: North American 1983



ID Page Name

- Spencer Heights
- Kohliak
- Crystal Lake
- Bellaire Lake
- Manhattan Creek
- Glen Echo
- Pingree Park Rd
- Box Prairie
- Paradise Park
- Willow Patch Ln
- Spruce Gulch
- Cedar Springs Res.
- Galuchie Gulch
- Triangle Mountain
- North Cameron Peak
- South Cameron Peak

County of Larimer, Bureau of Land Management, GIS, HERE, Garmin, USGS, NOAA, EPA, USDA, NPS