

Repair Lines on Private Land

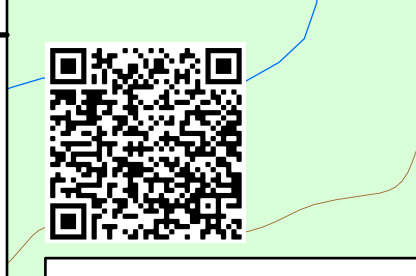
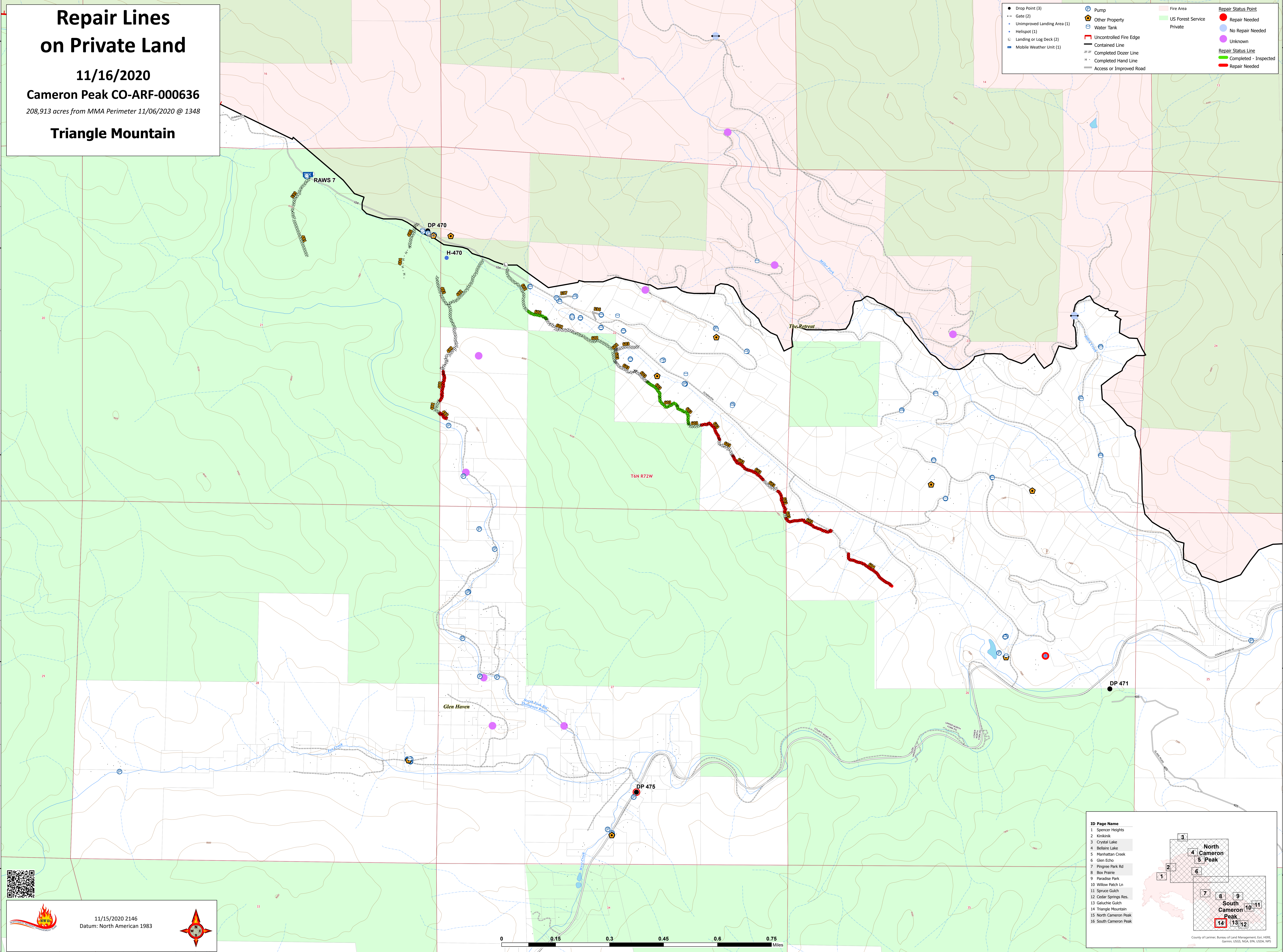
11/16/2020

Cameron Peak CO-ARF-000636

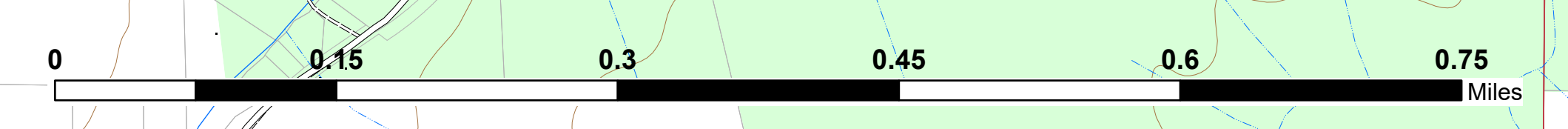
208,913 acres from MMA Perimeter 11/06/2020 @ 1348

Triangle Mountain

● Drop Point (3)	⊕ Pump	■ Fire Area	● Repair Status Point
- Gate (2)	🏠 Other Property	■ US Forest Service	● No Repair Needed
⊖ Unimproved Landing Area (1)	🌊 Water Tank	■ Private	● Unknown
⊙ Helispot (1)	🚒 Uncontrolled Fire Edge		● Repair Status Line
⊖ Landing or Log Deck (2)	⊖ Contained Line		● Completed - Inspected
🚚 Mobile Weather Unit (1)	⊖ Completed Dozer Line		● Repair Needed
	⊖ Completed Hand Line		
	⊖ Access or Improved Road		



11/15/2020 2146
Datum: North American 1983



ID Page Name

- Spencer Heights
- Kirkland
- Crystal Lake
- Bellaire Lake
- Manhattan Creek
- Glen Echo
- Pingree Park Rd
- Box Prairie
- Paradise Park
- Willow Patch Ln
- Spruce Gulch
- Cedar Springs Res.
- Galuchie Gulch
- Triangle Mountain
- North Cameron Peak
- South Cameron Peak

County of Larimer, Bureau of Land Management, Esri, HERE, Garmin, USGS, NOAA, EPA, USDA, NPS