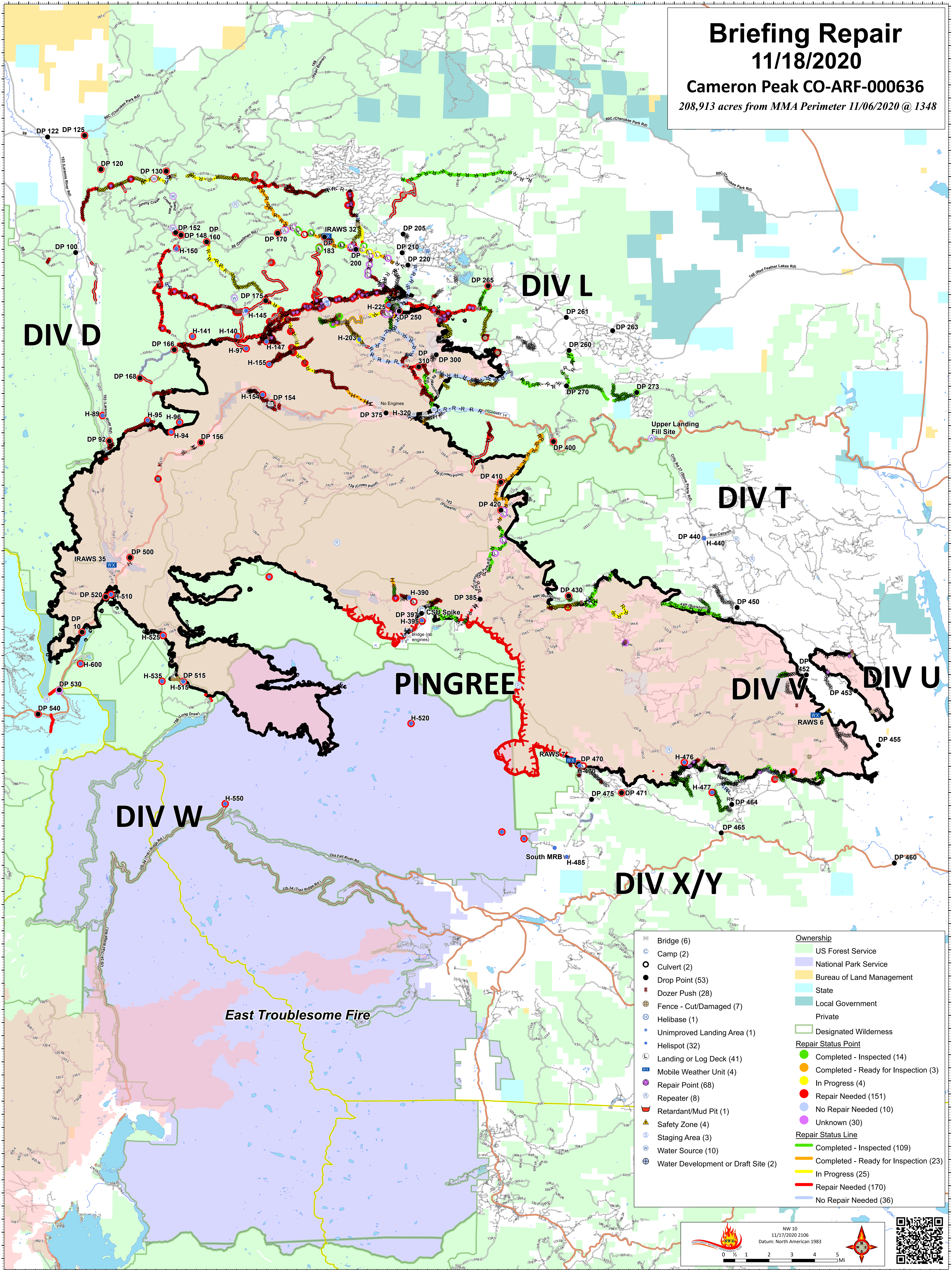


Briefing Repair

11/18/2020

Cameron Peak CO-ARF-000636
208,913 acres from MMA Perimeter 11/06/2020 @ 1348



DIV D

DIV L

DIV T

PINGREE

DIV W

DIV U

DIV W

DIV X/Y

East Troublesome Fire

⊗ Bridge (6)	Ownership
⊙ Camp (2)	US Forest Service
○ Culvert (2)	National Park Service
● Drop Point (53)	Bureau of Land Management
⊠ Dozer Push (28)	State
⊕ Fence - Cut/Damaged (7)	Local Government
⊖ Helibase (1)	Private
⊙ Unimproved Landing Area (1)	Designated Wilderness
⊙ Helispot (32)	Repair Status Point
⊙ Landing or Log Deck (41)	Completed - Inspected (14)
⊙ Mobile Weather Unit (4)	Completed - Ready for Inspection (3)
⊙ Repair Point (68)	In Progress (4)
⊙ Repeater (8)	Repair Needed (151)
⊙ Retardant/Mud Pit (1)	No Repair Needed (10)
⊙ Safety Zone (4)	Unknown (30)
⊙ Staging Area (3)	Repair Status Line
⊙ Water Source (10)	Completed - Inspected (109)
⊙ Water Development or Draft Site (2)	Completed - Ready for Inspection (23)
	In Progress (25)
	Repair Needed (170)
	No Repair Needed (36)

NW 10
11/17/2020 2106
Datum: North American 1983

0 1 2 3 4 5 Mi