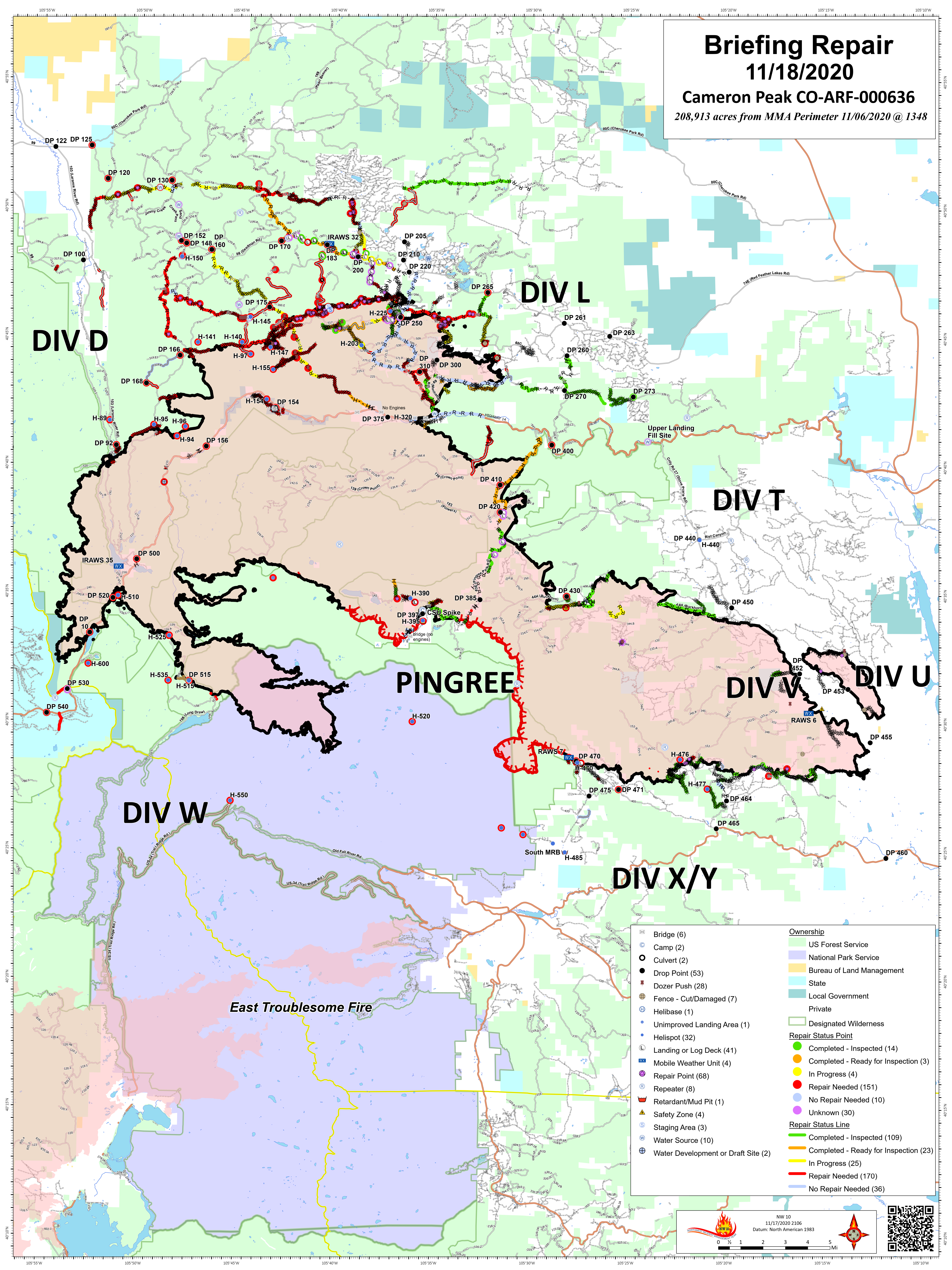


# Briefing Repair

## 11/18/2020

Cameron Peak CO-ARF-000636  
208,913 acres from MMA Perimeter 11/06/2020 @ 1348



**DIV D**

**DIV L**

**DIV T**

**PINGREE**

**DIV W**

**DIV U**

**DIV W**

**DIV X/Y**

*East Troublesome Fire*

<ul style="list-style-type: none"> <li>Bridge (6)</li> <li>Camp (2)</li> <li>Culvert (2)</li> <li>Drop Point (53)</li> <li>Dozer Push (28)</li> <li>Fence - Cut/Damaged (7)</li> <li>Helibase (1)</li> <li>Unimproved Landing Area (1)</li> <li>Helispot (32)</li> <li>Landing or Log Deck (41)</li> <li>Mobile Weather Unit (4)</li> <li>Repair Point (68)</li> <li>Repeater (8)</li> <li>Retardant/Mud Pit (1)</li> <li>Safety Zone (4)</li> <li>Staging Area (3)</li> <li>Water Source (10)</li> <li>Water Development or Draft Site (2)</li> </ul>	<p><b>Ownership</b></p> <ul style="list-style-type: none"> <li>US Forest Service</li> <li>National Park Service</li> <li>Bureau of Land Management</li> <li>State</li> <li>Local Government</li> <li>Private</li> <li>Designated Wilderness</li> </ul> <p><b>Repair Status Point</b></p> <ul style="list-style-type: none"> <li>Completed - Inspected (14)</li> <li>Completed - Ready for Inspection (3)</li> <li>In Progress (4)</li> <li>Repair Needed (151)</li> <li>No Repair Needed (10)</li> <li>Unknown (30)</li> </ul> <p><b>Repair Status Line</b></p> <ul style="list-style-type: none"> <li>Completed - Inspected (109)</li> <li>Completed - Ready for Inspection (23)</li> <li>In Progress (25)</li> <li>Repair Needed (170)</li> <li>No Repair Needed (36)</li> </ul>
--	--

NW 10  
11/17/2020 2106  
Datum: North American 1983