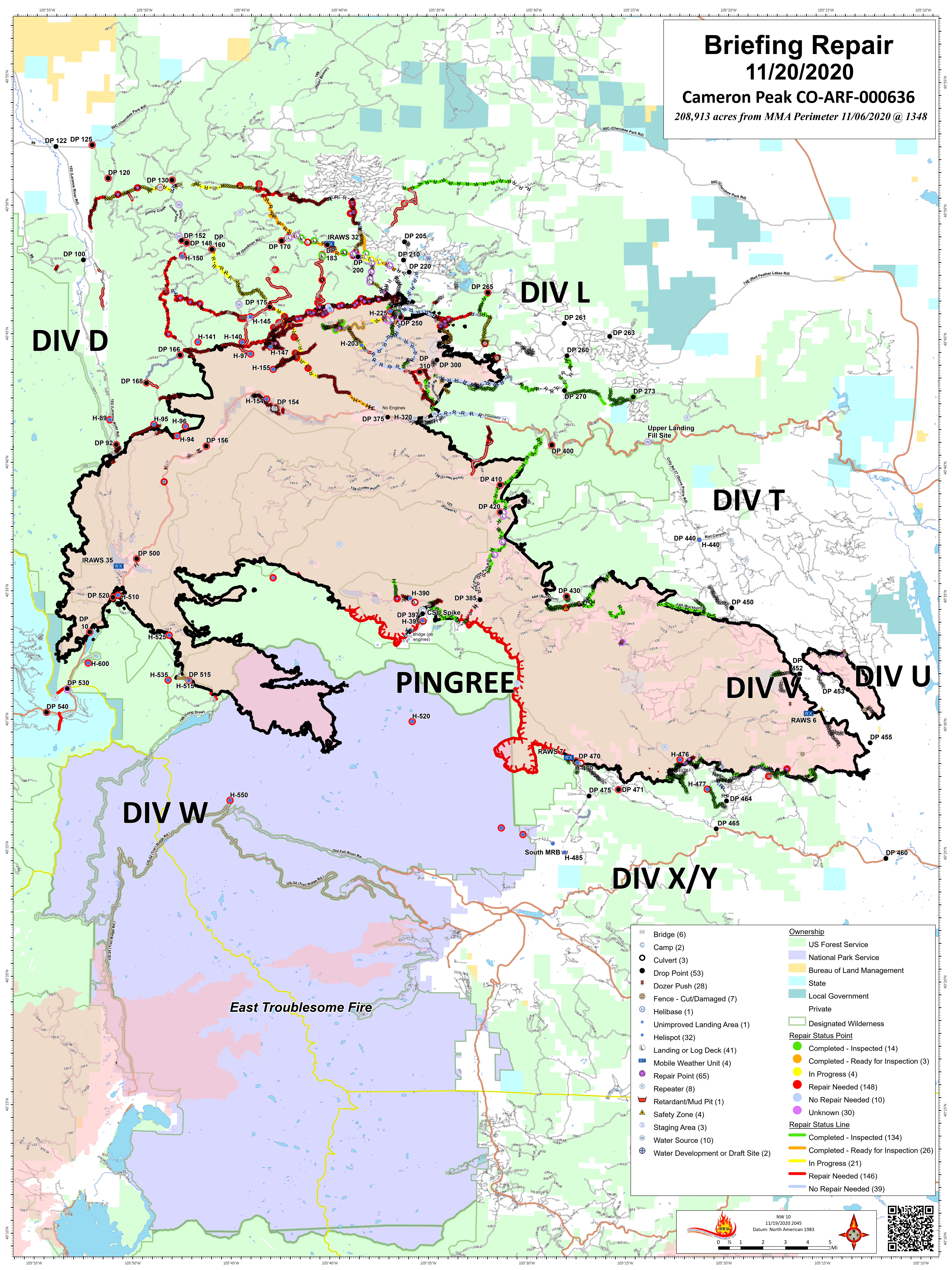


# Briefing Repair

11/20/2020

Cameron Peak CO-ARF-000636

208,913 acres from MMA Perimeter 11/06/2020 @ 1348



DIV D

DIV L

DIV T

PINGREE

DIV W

DIV U

DIV W

DIV X/Y

East Troublesome Fire

Bridge (6)	US Forest Service
Camp (2)	National Park Service
Culvert (3)	Bureau of Land Management
Drop Point (53)	State
Dozer Push (28)	Local Government
Fence - Cut/Damaged (7)	Private
Helibase (1)	Designated Wilderness
Unimproved Landing Area (1)	<b>Repair Status Point</b>
Helispot (32)	Completed - Inspected (14)
Landing or Log Deck (41)	Completed - Ready for Inspection (3)
Mobile Weather Unit (4)	In Progress (4)
Repair Point (65)	Repair Needed (148)
Repeater (8)	No Repair Needed (10)
Retardant/Mud Pit (1)	Unknown (30)
Safety Zone (4)	<b>Repair Status Line</b>
Staging Area (3)	Completed - Inspected (134)
Water Source (10)	Completed - Ready for Inspection (26)
Water Development or Draft Site (2)	In Progress (21)
	Repair Needed (146)
	No Repair Needed (39)

NW 10  
11/19/2020 2045  
Datum: North American 1983