

# Ownership Map

11/20/2020

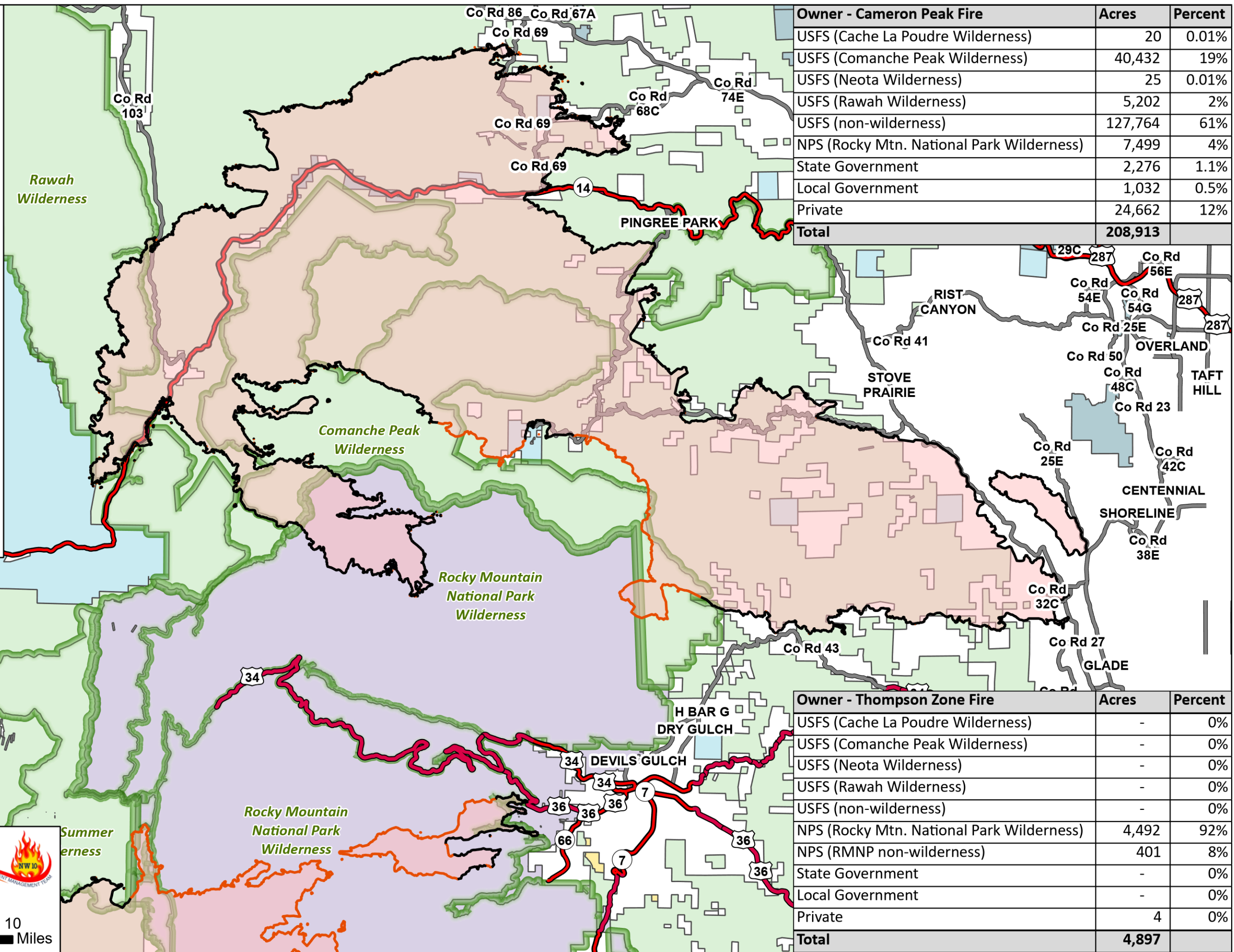
**Cameron Peak**  
CO-ARF-000636

208,913 acres from  
MMA Perimeter 11/06/2020 @ 1348

**Thompson Zone**  
WY-MRF-000408

4,897 acres from  
MMA Perimeter 11/06/2020 @ 1408

- Fire Area
- Contained Line
- USFS
- NPS
- State
- Local
- BLM
- Private
- Other Federal
- Designated Wilderness
- US or State Hwy
- County Rd



Owner - Cameron Peak Fire	Acres	Percent
USFS (Cache La Poudre Wilderness)	20	0.01%
USFS (Comanche Peak Wilderness)	40,432	19%
USFS (Neota Wilderness)	25	0.01%
USFS (Rawah Wilderness)	5,202	2%
USFS (non-wilderness)	127,764	61%
NPS (Rocky Mtn. National Park Wilderness)	7,499	4%
State Government	2,276	1.1%
Local Government	1,032	0.5%
Private	24,662	12%
<b>Total</b>	<b>208,913</b>	

Owner - Thompson Zone Fire	Acres	Percent
USFS (Cache La Poudre Wilderness)	-	0%
USFS (Comanche Peak Wilderness)	-	0%
USFS (Neota Wilderness)	-	0%
USFS (Rawah Wilderness)	-	0%
USFS (non-wilderness)	-	0%
NPS (Rocky Mtn. National Park Wilderness)	4,492	92%
NPS (RMNP non-wilderness)	401	8%
State Government	-	0%
Local Government	-	0%
Private	4	0%
<b>Total</b>	<b>4,897</b>	



NW 10  
11/19/2020 2100

Datum: North American 1983  
Lat/Long Grid