

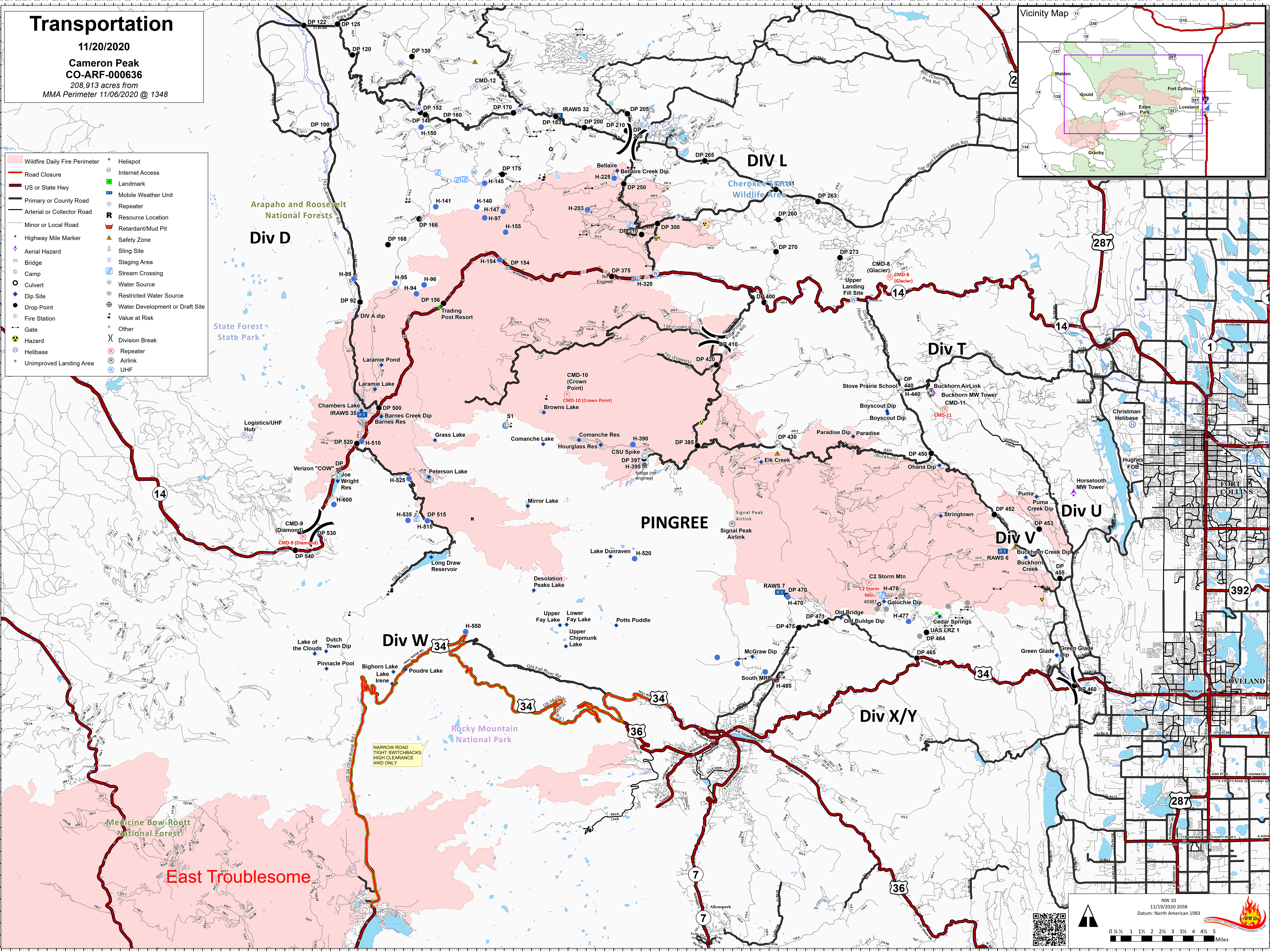
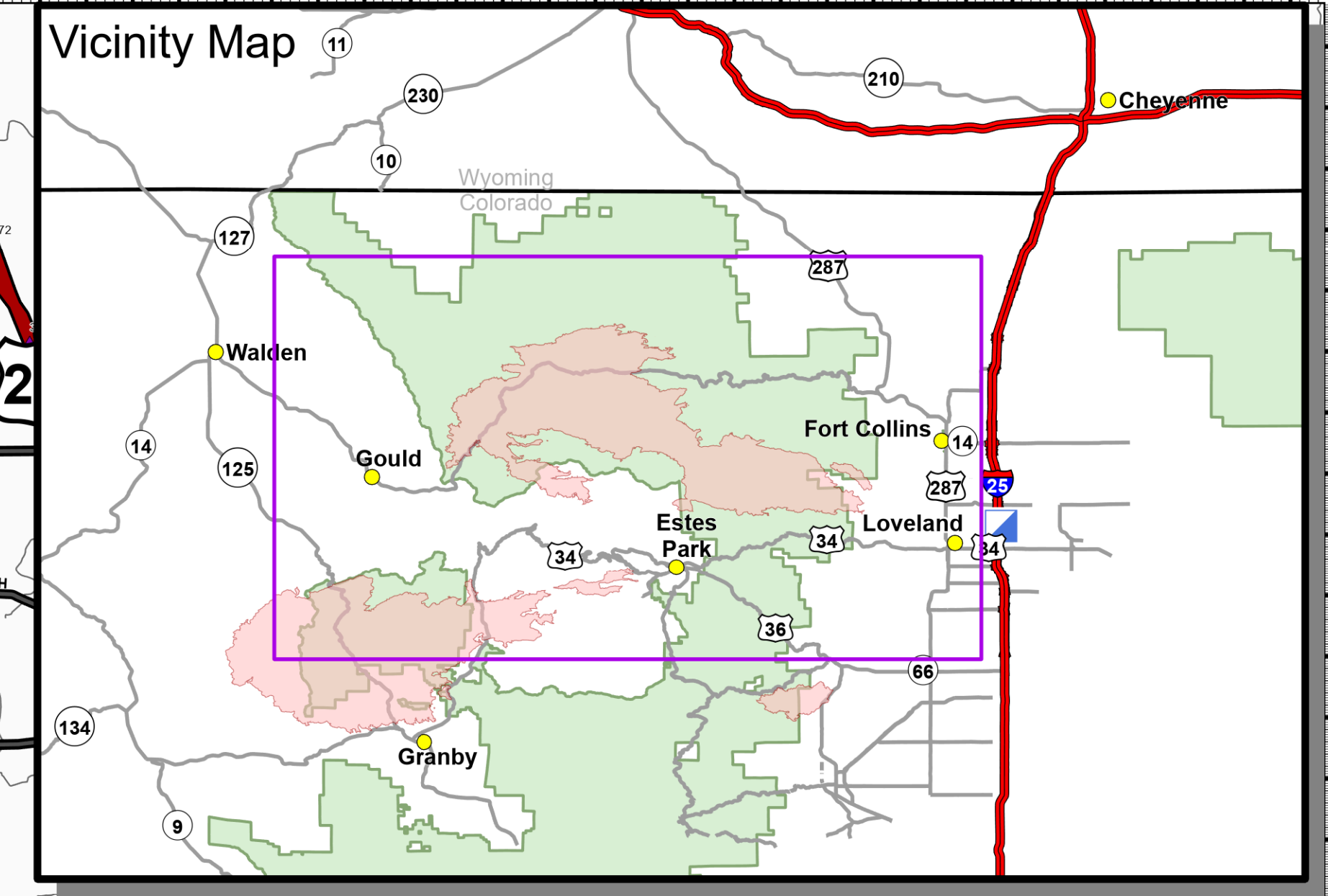
# Transportation

11/20/2020

Cameron Peak  
CO-ARF-000636

208,913 acres from  
MMA Perimeter 11/06/2020 @ 1348

- Wildfire Daily Fire Perimeter
- Road Closure
- US or State Hwy
- Primary or County Road
- Arterial or Collector Road
- Minor or Local Road
- Highway Mile Marker
- Aerial Hazard
- Bridge
- Camp
- Culvert
- Dip Site
- Drop Point
- Fire Station
- Gate
- Hazard
- Helibase
- Unimproved Landing Area
- Helispot
- Internet Access
- Landmark
- Mobile Weather Unit
- Repeater
- Resource Location
- Retardant/Mud Pit
- Safety Zone
- Sling Site
- Staging Area
- Stream Crossing
- Water Source
- Restricted Water Source
- Water Development or Draft Site
- Value at Risk
- Other
- Division Break
- Repeater
- Airlink
- UHF



Div W

PINGREE

Div X/Y

Div U

Div V

Div T

Div D

Div L

East Troublesome

NARROW ROAD  
TIGHT SWITCHBACKS  
HIGH CLEARANCE  
4WD ONLY

NW 10  
11/19/2020 2058  
Datum: North American 1983