

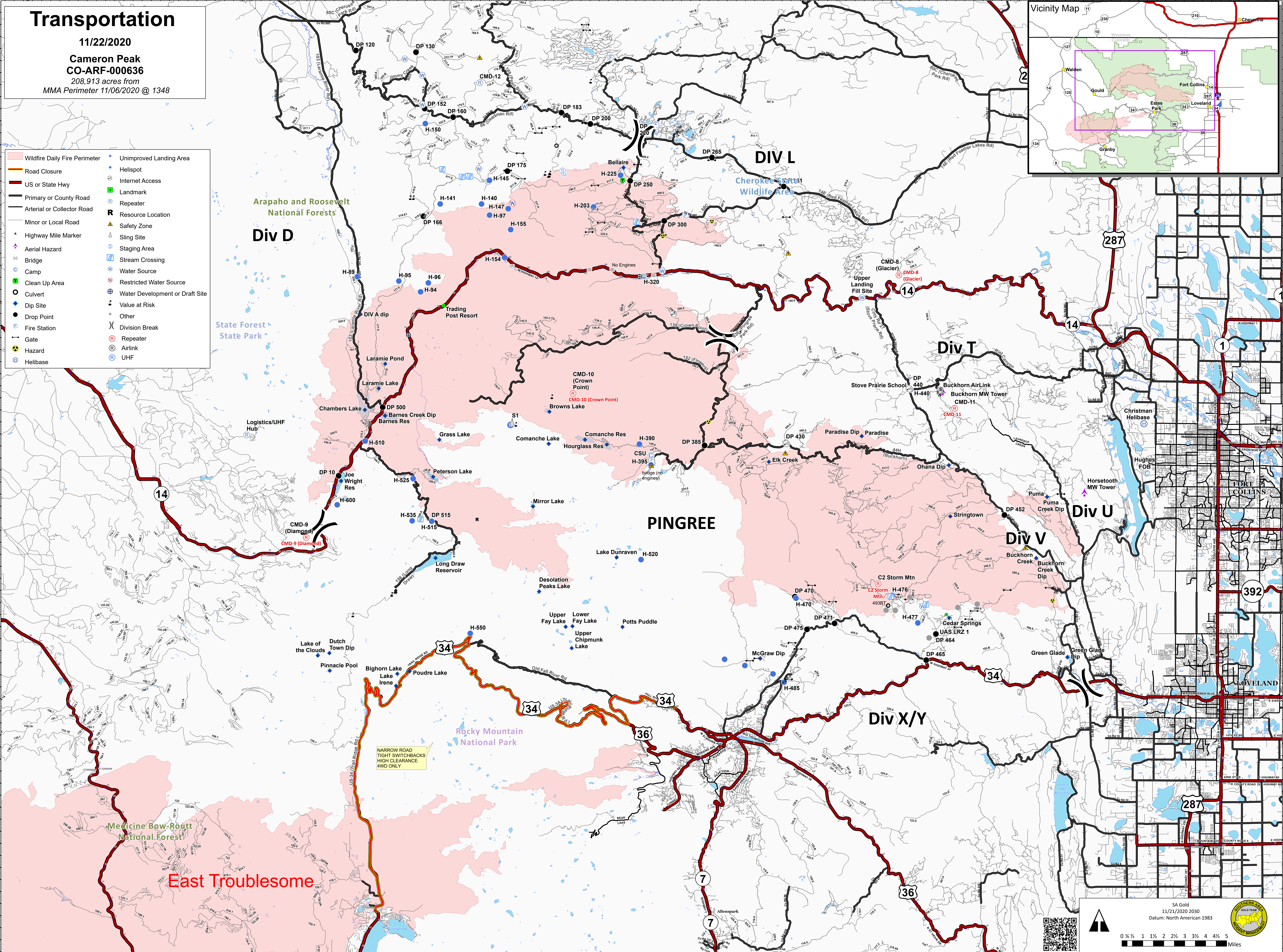
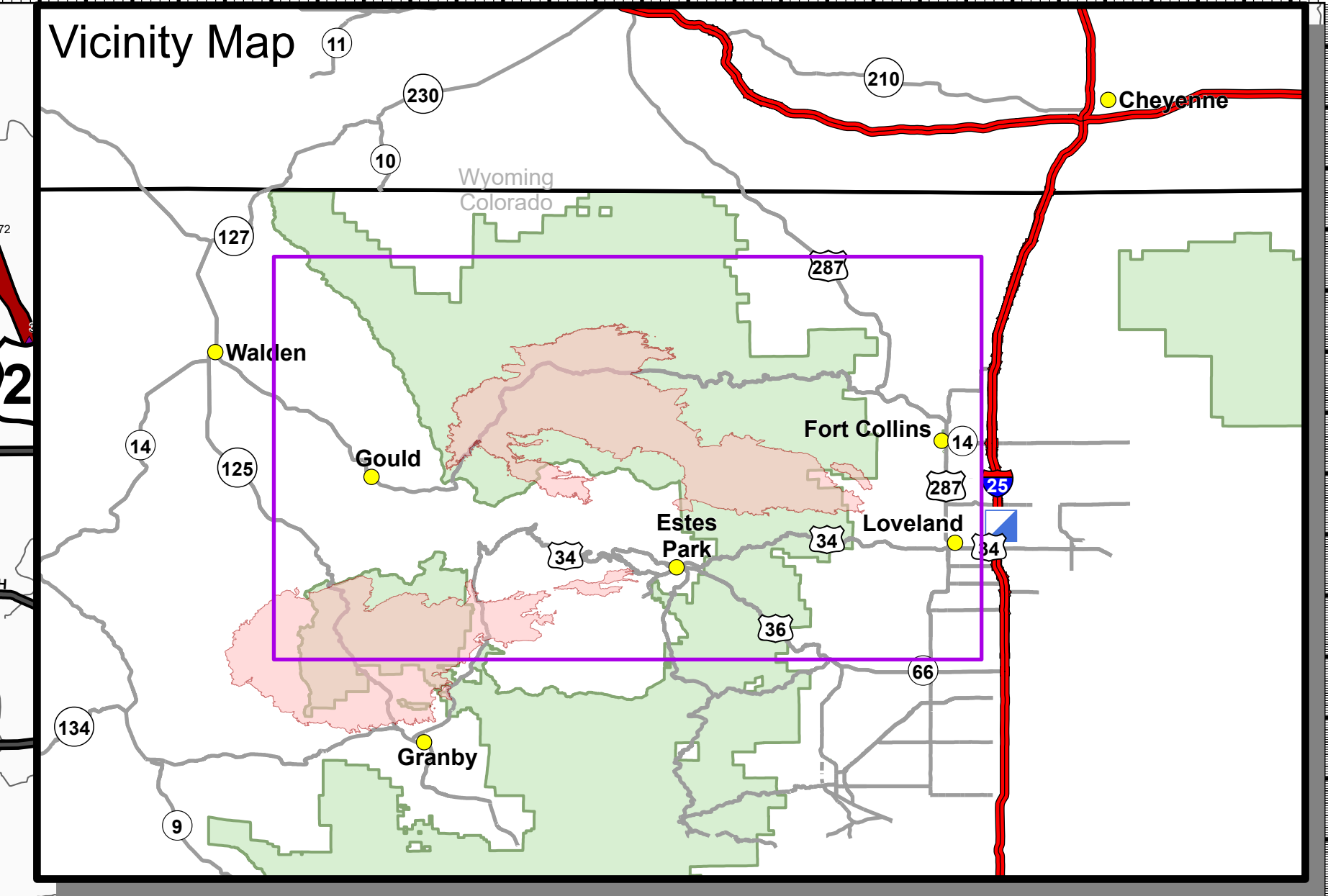
Transportation

11/22/2020

**Cameron Peak
CO-ARF-000636**

208,913 acres from
MMA Perimeter 11/06/2020 @ 1348

- Wildfire Daily Fire Perimeter
- Road Closure
- US or State Hwy
- Primary or County Road
- Arterial or Collector Road
- Minor or Local Road
- Highway Mile Marker
- Aerial Hazard
- Bridge Crossing
- Camp
- Clean Up Area
- Culvert
- Dip Site
- Drop Point
- Fire Station
- Gate
- Hazard
- Helibase
- Unimproved Landing Area
- Helispot
- Internet Access
- Landmark
- Repeater
- Resource Location
- Safety Zone
- Sling Site
- Staging Area
- Stream Crossing
- Water Source
- Restricted Water Source
- Water Development or Draft Site
- Value at Risk
- Other
- Division Break
- Repeater
- Airlink
- UHF



NARROW ROAD
TIGHT SWITCHBACKS
HIGH CLEARANCE
4WD ONLY

SA Gold
11/21/2020 2030
Datum: North American 1983

0 1/4 1 1/2 2 2 1/2 3 3 1/2 4 4 1/2 5
Miles