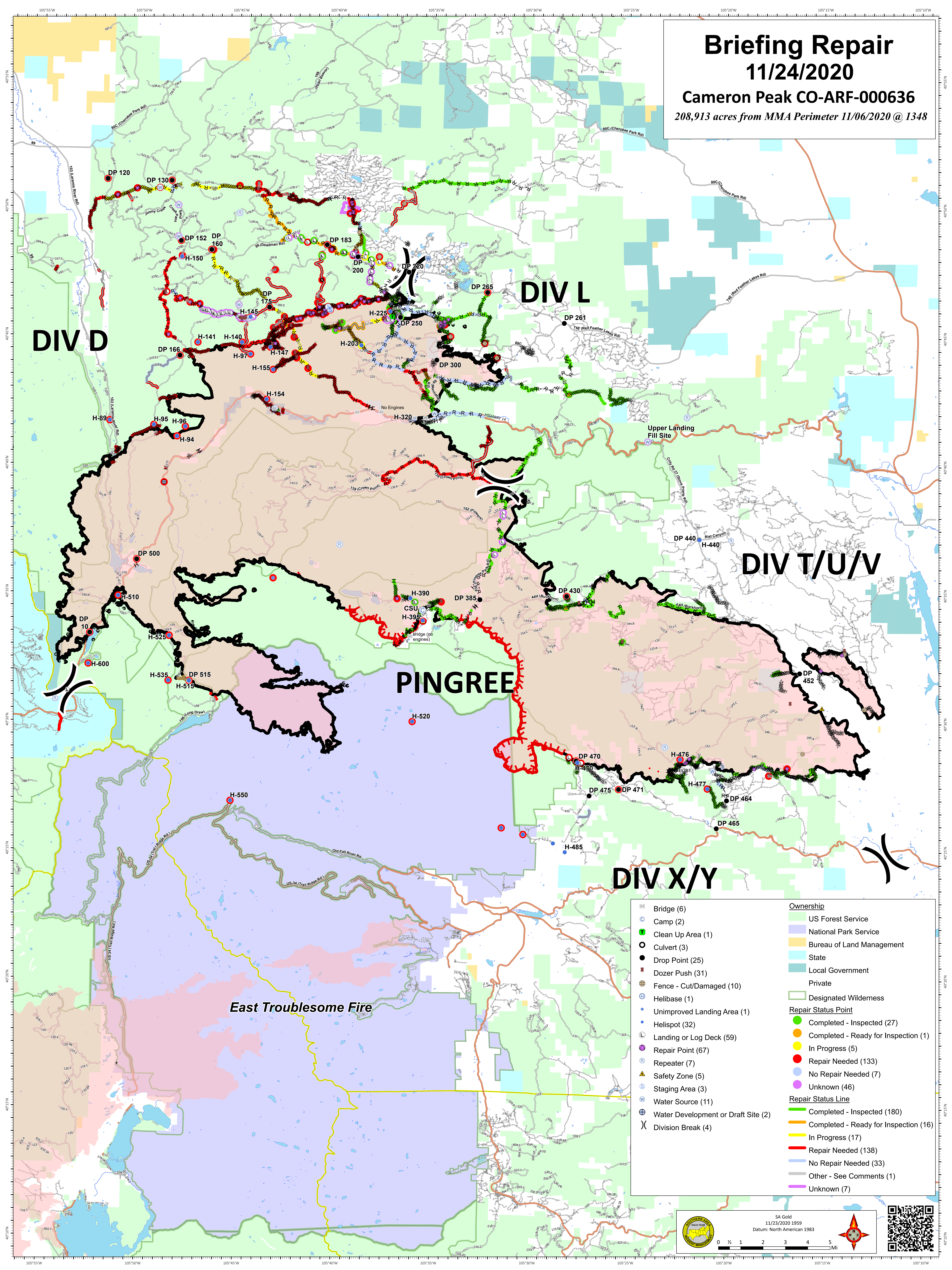


Briefing Repair

11/24/2020

Cameron Peak CO-ARF-000636
208,913 acres from MMA Perimeter 11/06/2020 @ 1348



DIV D

DIV L

DIV T/U/V

DIV X/Y

PINGREE

East Troublesome Fire

	Bridge (6)		US Forest Service
	Camp (2)		National Park Service
	Clean Up Area (1)		Bureau of Land Management
	Culvert (3)		State
	Drop Point (25)		Local Government
	Dozer Push (31)		Private
	Fence - Cut/Damaged (10)		Designated Wilderness
	Helibase (1)	Repair Status Point	
	Unimproved Landing Area (1)		Completed - Inspected (27)
	Helispot (32)		Completed - Ready for Inspection (1)
	Landing or Log Deck (59)		In Progress (5)
	Repair Point (67)		Repair Needed (133)
	Repeater (7)		No Repair Needed (7)
	Safety Zone (5)		Unknown (46)
	Staging Area (3)	Repair Status Line	
	Water Source (11)		Completed - Inspected (180)
	Water Development or Draft Site (2)		Completed - Ready for Inspection (16)
	Division Break (4)		In Progress (17)
			Repair Needed (138)
			No Repair Needed (33)
			Other - See Comments (1)
			Unknown (7)

SA Gold
11/23/2020 1959
Datum: North American 1983

0 1/2 1 2 3 4 5 Mi