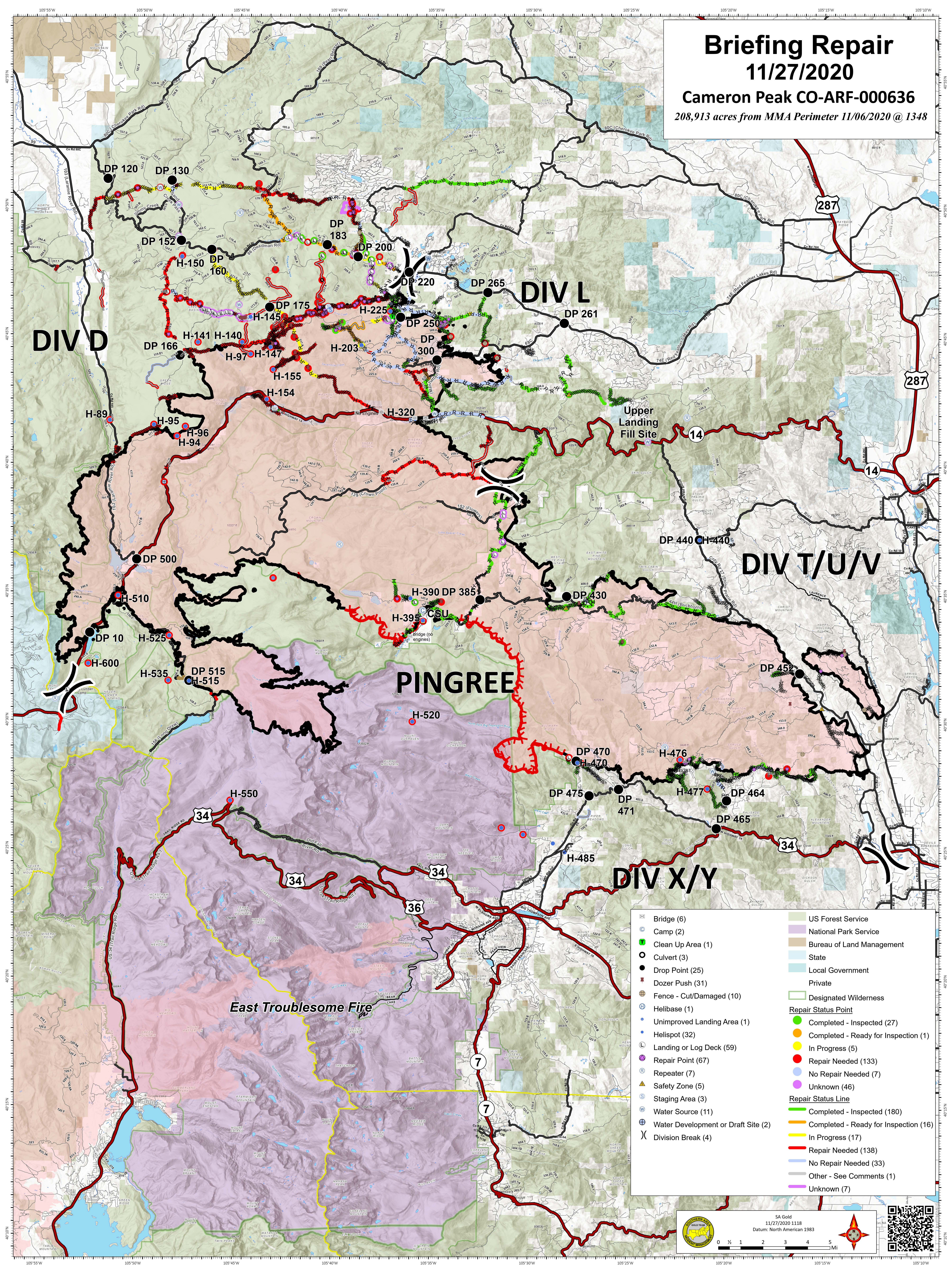


Briefing Repair

11/27/2020

Cameron Peak CO-ARF-000636
208,913 acres from MMA Perimeter 11/06/2020 @ 1348



DIV D

DIV L

DIV T/U/V

DIV X/Y

PINGREE

East Troublesome Fire

Bridge (6)	US Forest Service
Camp (2)	National Park Service
Clean Up Area (1)	State of Land Management
Culvert (3)	Local Government
Drop Point (25)	Private
Dozer Push (31)	Designated Wilderness
Fence - Cut/Damaged (10)	Repair Status Point
Helibase (1)	Completed - Inspected (27)
Unimproved Landing Area (1)	Completed - Ready for Inspection (1)
Helispot (32)	In Progress (5)
Landing or Log Deck (59)	Repair Needed (133)
Repair Point (67)	No Repair Needed (7)
Repeater (7)	Unknown (46)
Safety Zone (5)	Repair Status Line
Staging Area (3)	Completed - Inspected (180)
Water Source (11)	Completed - Ready for Inspection (16)
Water Development or Draft Site (2)	In Progress (17)
Division Break (4)	Repair Needed (138)
	No Repair Needed (33)
	Other - See Comments (1)
	Unknown (7)

SA Gold
11/27/2020 1118
Datum: North American 1983