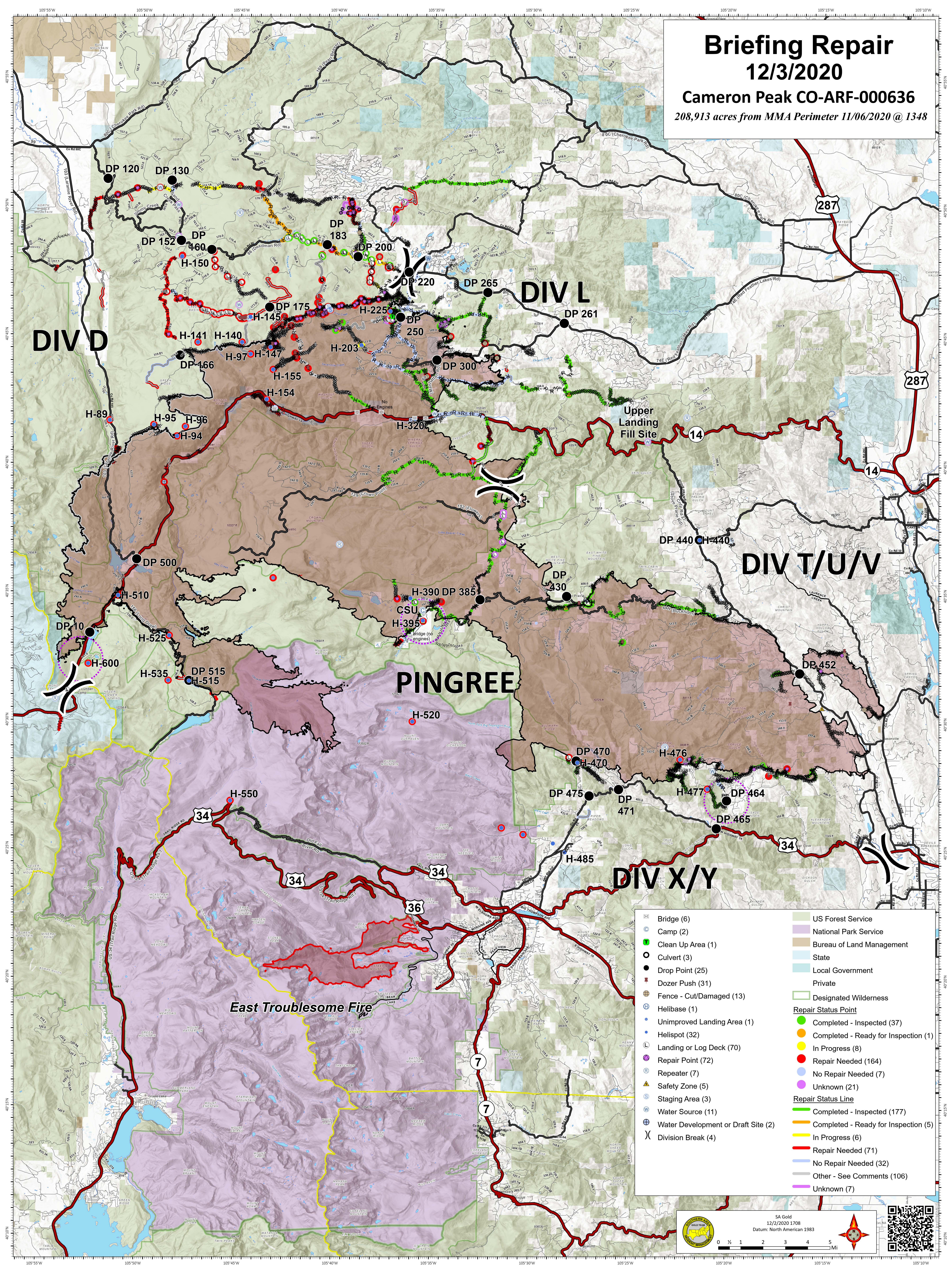


# Briefing Repair

## 12/3/2020

Cameron Peak CO-ARF-000636  
208,913 acres from MMA Perimeter 11/06/2020 @ 1348



DIV D

DIV L

DIV T/U/V

DIV X/Y

PINGREE

East Troublesome Fire

Bridge (6)	US Forest Service
Camp (2)	National Park Service
Clean Up Area (1)	Bureau of Land Management
Culvert (3)	State
Drop Point (25)	Local Government
Dozer Push (31)	Private
Fence - Cut/Damaged (13)	Designated Wilderness
Helibase (1)	Repair Status Point
Unimproved Landing Area (1)	Completed - Inspected (37)
Helispot (32)	Completed - Ready for Inspection (1)
Landing or Log Deck (70)	In Progress (8)
Repair Point (72)	Repair Needed (164)
Repeater (7)	No Repair Needed (7)
Safety Zone (5)	Unknown (21)
Staging Area (3)	Repair Status Line
Water Source (11)	Completed - Inspected (177)
Water Development or Draft Site (2)	Completed - Ready for Inspection (5)
Division Break (4)	In Progress (6)
	Repair Needed (71)
	No Repair Needed (32)
	Other - See Comments (106)
	Unknown (7)

SA Gold  
12/2/2020 1708  
Datum: North American 1983