

# Air Operations

## Cameron Peak - COARF-000636

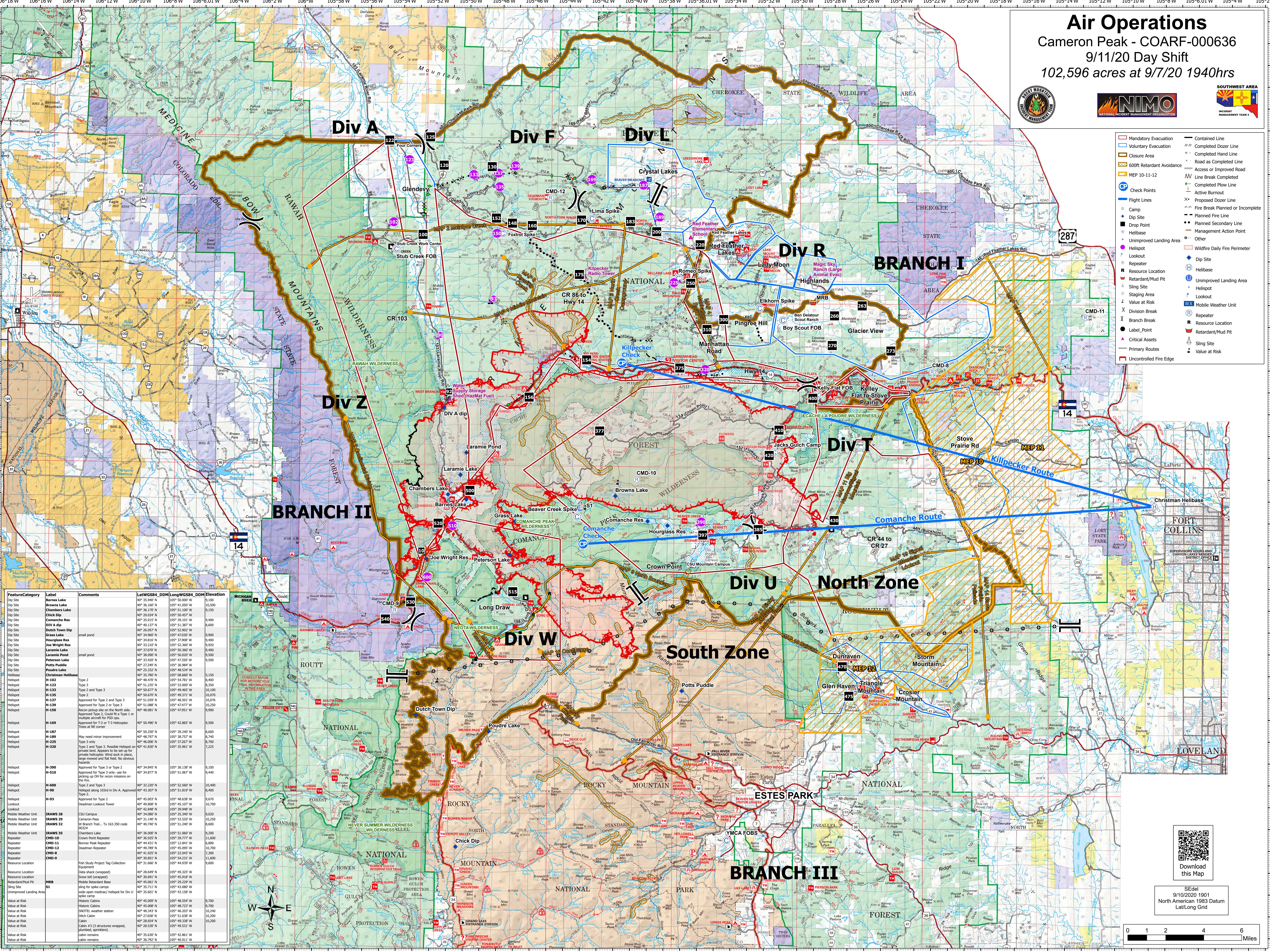
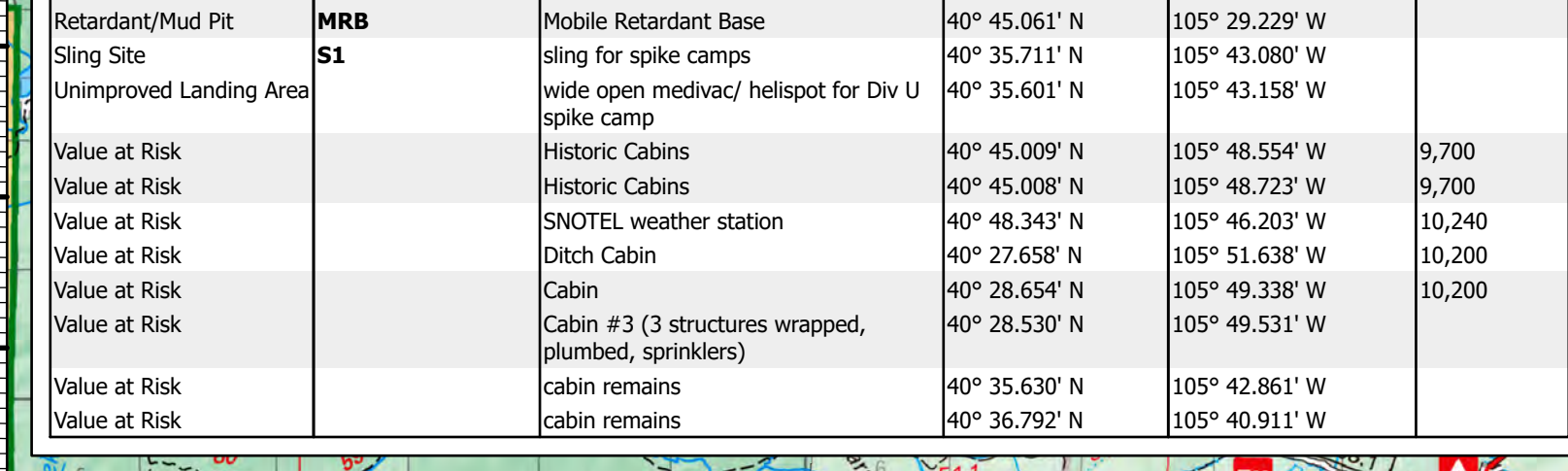
### 9/11/20 Day Shift

#### 102,596 acres at 9/7/20 1940hrs



- Mandatory Evacuation
- Voluntary Evacuation
- Closure Area
- 600ft Retardant Avoidance
- MEP 10-11-12
- Check Points
- Flight Lines
- Camp
- Dip Site
- Drop Point
- Helibase
- Unimproved Landing Area
- Helispot
- Repeater
- Resource Location
- Branch Break
- Label Point
- Critical Assets
- Primary Routes
- Uncontrolled Fire Edge
- Contained Line
- Completed Dozer Line
- Completed Hand Line
- Road as Completed Line
- Access or Improved Road
- Line Break Completed
- Completed Plow Line
- Active Burnout
- Proposed Dozer Line
- Fire Break Planned or Incomplete
- Planned Fire Line
- Management Secondary Line
- Management Action Point
- Other
- Wildfire Daily Fire Perimeter
- Dip Site
- Helibase
- Unimproved Landing Area
- Helispot
- Lookout
- Repeater
- Resource Location
- Retardant/Mud Pit
- Sling Site
- Value at Risk
- Mobile Weather Unit
- Repeater
- Resource Location
- Retardant/Mud Pit
- Sling Site
- Value at Risk

Feature/Category	Label	Comments	Lat/Long (DDM)	Elevation
Helispot	Brown Lake		40° 36.100 N, 105° 41.000 W	10,100
Dip Site	Chambers Lake		40° 36.170 N, 105° 51.100 W	9,150
Dip Site	Chick Dip		40° 20.034 N, 105° 50.457 W	9,400
Dip Site	Comanche Res		40° 52.015 N, 105° 39.101 W	8,600
Dip Site	Div A dip		40° 40.137 N, 105° 51.387 W	8,600
Dip Site	Dutch Town Dip	small pond	40° 26.057 N, 105° 52.902 W	9,500
Dip Site	Grass Lake		40° 34.960 N, 105° 42.830 W	9,400
Dip Site	Hourglass Res		40° 38.816 N, 105° 37.908 W	9,400
Dip Site	Joe Wright Res		40° 33.210 N, 105° 52.360 W	9,500
Dip Site	Laramie Lake	small pond	40° 52.076 N, 105° 52.367 W	9,400
Dip Site	Laramie Pond		40° 38.990 N, 105° 50.020 W	9,500
Dip Site	Peterson Lake		40° 33.420 N, 105° 47.350 W	9,500
Dip Site	Potts Puddle		40° 23.249 N, 105° 36.094 W	9,500
Dip Site	Poudre Lake		40° 25.332 N, 105° 48.534 W	9,500
Helibase	Christmas Helibase		40° 35.780 N, 105° 48.660 W	5,150
Helispot	H-102	Type 2	40° 48.470 N, 105° 54.701 W	8,400
Helispot	H-113	Type 2 and Type 3	40° 41.230 N, 105° 53.000 W	8,350
Helispot	H-133	Type 2 and Type 3	40° 50.677 N, 105° 49.465 W	10,100
Helispot	H-135	Approved for Type 2 and Type 3	40° 50.670 N, 105° 49.371 W	10,076
Helispot	H-137	Approved for Type 2 and Type 3	40° 51.030 N, 105° 48.501 W	10,076
Helispot	H-139	Approved for Type 2 or Type 3	40° 51.088 N, 105° 47.477 W	10,250
Helispot	H-150	Recon pickup site on the North side. Approved for T2 or T3 Helispot. Multiple aircraft for PSD ops.	40° 48.081 N, 105° 47.951 W	9,900
Helispot	H-169	Approved for T2 or T3 Helispot. Trees at NE corner	40° 50.496 N, 105° 42.865 W	9,500
Helispot	H-187		40° 50.250 N, 105° 39.240 W	8,600
Helispot	H-189	May need minor improvement	40° 48.797 N, 105° 51.007 W	9,400
Helispot	H-225	Type 3 only	40° 46.006 N, 105° 37.267 W	8,700
Helispot	H-320	Type 2 and Type 3. Possible Helispot on private land. Applies to be set up by private helicopter. Wind sock in place, large mowed and flat field. No obvious hazards	40° 41.830 N, 105° 35.961 W	7,225
Helispot	H-390	Approved for Type 3 or Type 2	40° 34.840 N, 105° 36.138 W	9,100
Helispot	H-519	Approved for Type 3 only. Use for picking up OH for recon missions on the fire	40° 34.877 N, 105° 51.007 W	9,400
Helispot	H-600	Type 2 and Type 3	40° 32.220 N, 105° 52.560 W	10,400
Helispot	H-90	Approved along 183rd in Div A. Approved for T2	40° 43.307 N, 105° 51.819 W	8,400
Helispot	H-93	Approved for Type 2	40° 45.003 N, 105° 48.638 W	9,670
Lookout		Deadman Lookout Tower	40° 49.808 N, 105° 45.107 W	10,700
Lookout			40° 43.846 N, 105° 39.945 W	9,200
Mobile Weather Unit	IRAWS 28	CSU Campus	40° 34.080 N, 105° 35.340 W	9,020
Mobile Weather Unit	IRAWS 29	Cameron Pass	40° 31.140 N, 105° 53.520 W	10,250
Mobile Weather Unit	IRAWS 32	W Branch trail, Tx 163.350 code 0032	40° 40.740 N, 105° 51.240 W	8,600
Mobile Weather Unit	IRAWS 35	Chambers Lake	40° 36.000 N, 105° 51.000 W	9,200
Repeater	CMD-10	Crown Peak Repeater	40° 36.920 N, 105° 39.777 W	11,600
Repeater	CMD-11	Bonnet Peak Repeater	40° 44.431 N, 105° 12.841 W	6,800
Repeater	CMD-12	Deadman Repeater	40° 49.789 N, 105° 45.095 W	10,700
Repeater	CMD-8		40° 41.920 N, 105° 22.045 W	7,200
Repeater	CMD-9		40° 30.851 N, 105° 54.231 W	11,600
Resource Location		Fish Study Project Tag Collection	40° 31.666 N, 105° 44.939 W	9,600
Resource Location		Equipment	40° 28.649 N, 105° 49.325 W	9,700
Resource Location		Snow fall (wrapped)	40° 30.691 N, 105° 45.918 W	9,700
Resource Location		Mobile Retardant Base	40° 45.861 N, 105° 29.229 W	10,240
Sling Site	MB	sling for spike camps	40° 35.711 N, 105° 43.080 W	7,200
Unimproved Landing Area		wide open meadow/helispot for Div U spike camp	40° 35.601 N, 105° 43.158 W	9,600
Value at Risk		Historic Cabins	40° 45.009 N, 105° 48.554 W	9,700
Value at Risk		Historic Cabins	40° 45.008 N, 105° 48.723 W	9,700
Value at Risk		SNOWTEL weather station	40° 48.242 N, 105° 46.207 W	10,240
Value at Risk		Ditch Cabin	40° 27.638 N, 105° 51.638 W	10,200
Value at Risk		Cabin	40° 28.654 N, 105° 49.338 W	10,200
Value at Risk		Cabin #3 (3 structures wrapped, plumbed, sprinklers)	40° 28.530 N, 105° 49.531 W	10,200
Value at Risk		cabin remains	40° 35.630 N, 105° 42.861 W	9,700
Value at Risk		cabin remains	40° 36.792 N, 105° 42.861 W	9,700



Download this Map

Scale  
9/10/2020 1901  
North American 1983 Datum  
Lat/Long Grid