

Briefing

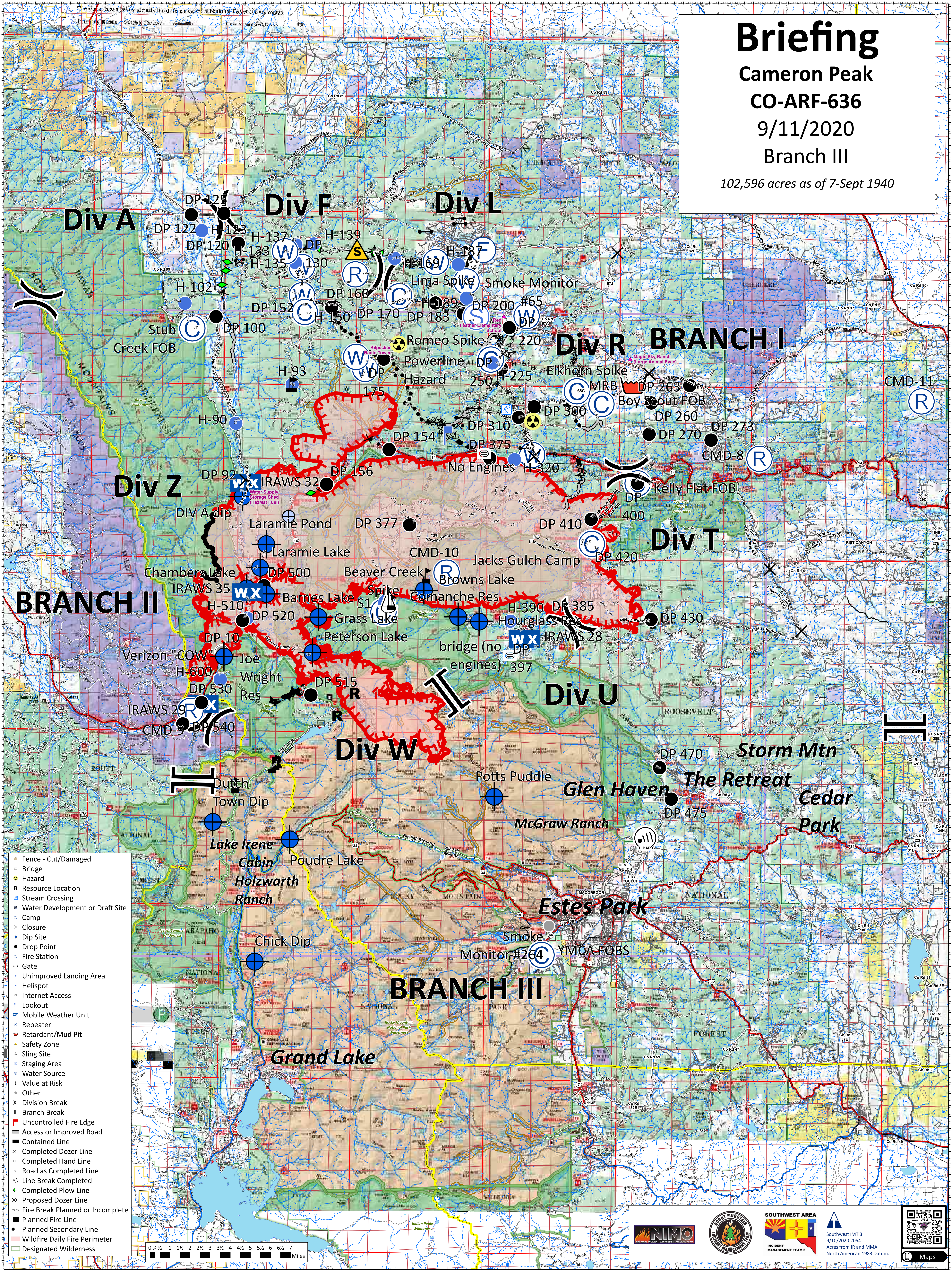
Cameron Peak

CO-ARF-636

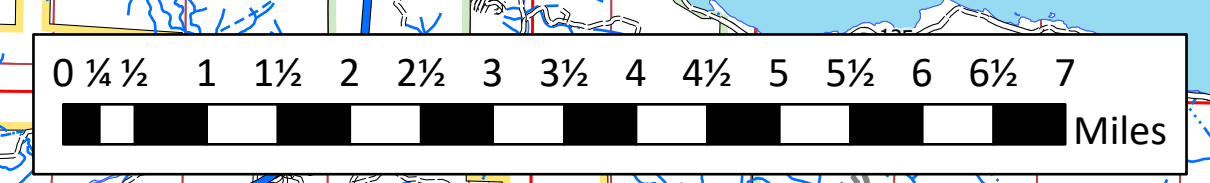
9/11/2020

Branch III

102,596 acres as of 7-Sept 1940



- Fence - Cut/Damaged
- Bridge
- Hazard
- Resource Location
- Stream Crossing
- Water Development or Draft Site
- Camp
- Closure
- Dip Site
- Drop Point
- Fire Station
- Gate
- Unimproved Landing Area
- Helispot
- Internet Access
- Lookout
- Mobile Weather Unit
- Repeater
- Retardant/Mud Pit
- Safety Zone
- Sling Site
- Staging Area
- Water Source
- Value at Risk
- Other
- Division Break
- Branch Break
- Uncontrolled Fire Edge
- Access or Improved Road
- Contained Line
- Completed Dozer Line
- Completed Hand Line
- Road as Completed Line
- Line Break Completed
- Completed Plow Line
- Proposed Dozer Line
- Fire Break Planned or Incomplete
- Planned Fire Line
- Planned Secondary Line
- Wildfire Daily Fire Perimeter
- Designated Wilderness





NATIONAL INCIDENT MANAGEMENT ORGANIZATION



ROCKY MOUNTAIN NATIONAL PARK



SOUTHWEST AREA INCIDENT MANAGEMENT TEAM 3



Southwest IMT 3
9/10/2020 2054
Acres from IR and MMA
North American 1983 Datum.



Maps