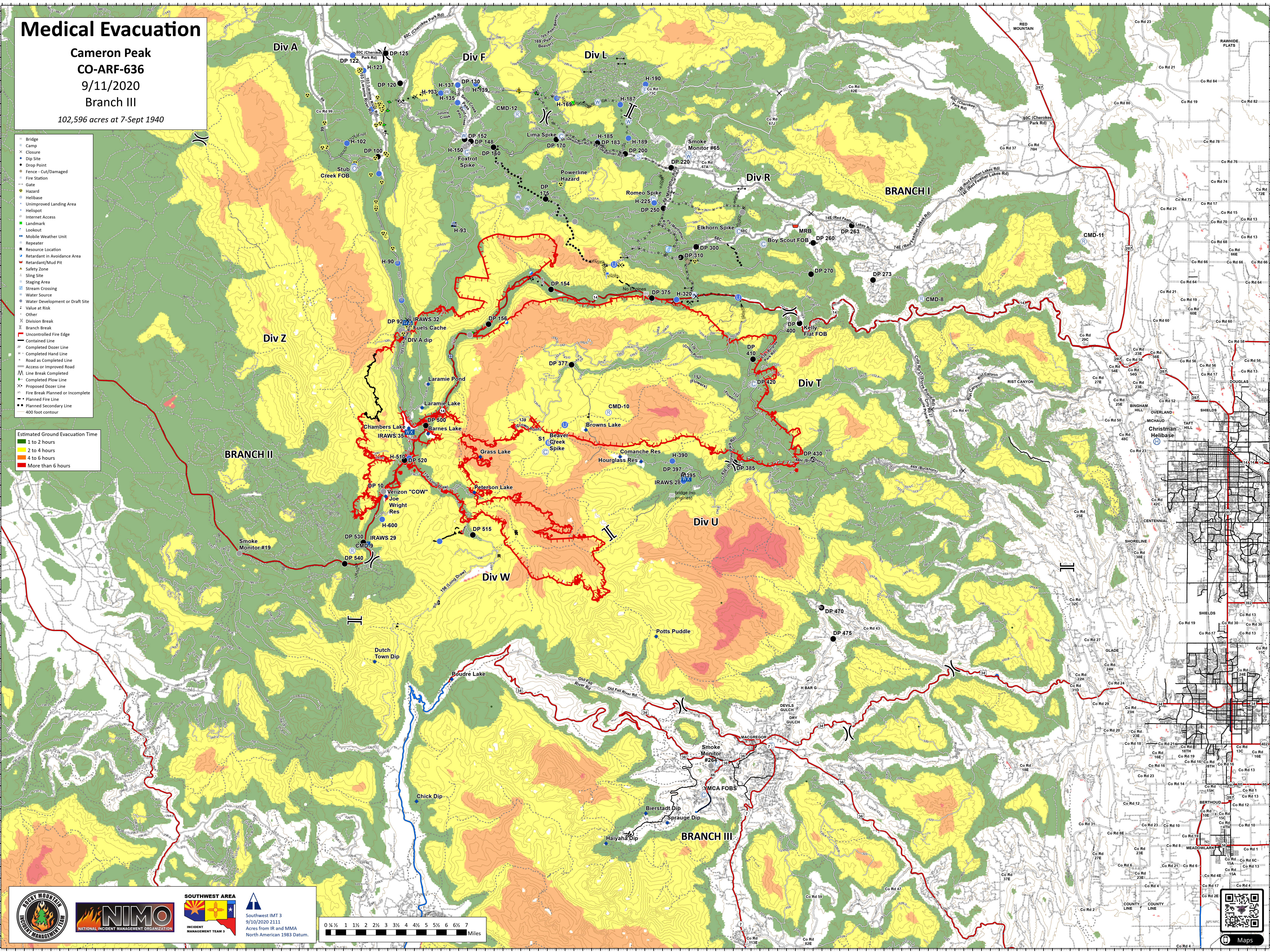
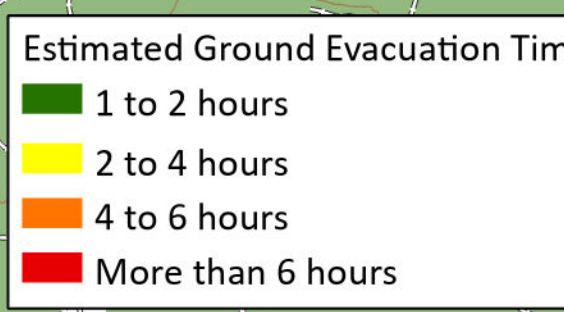


# Medical Evacuation

Cameron Peak  
CO-ARF-636  
9/11/2020  
Branch III  
102,596 acres at 7-Sept 1940

- Bridge
- Camp
- Closure
- Dip Site
- Drop Point
- Fence - Cut/Damaged
- Fire Station
- Gate
- Hazard
- Helibase
- Unimproved Landing Area
- Helispot
- Internet Access
- Landmark
- Lookout
- Mobile Weather Unit
- Repeater
- Resource Location
- Retardant in Avoidance Area
- Retardant/Mud Pit
- Safety Zone
- Sling Site
- Staging Area
- Stream Crossing
- Water Source
- Water Development or Draft Site
- Value at Risk
- Other
- Division Break
- Branch Break
- Uncontrolled Fire Edge
- Contained Line
- Completed Dozer Line
- Completed Hand Line
- Road as Completed Line
- Access or Improved Road
- Line Break Completed
- Completed Plow Line
- Proposed Dozer Line
- Fire Break Planned or Incomplete
- Planned Fire Line
- Planned Secondary Line
- 400 foot contour



**ROCKY MOUNTAIN INCIDENT MANAGEMENT TEAM**

**NIMO**  
NATIONAL INCIDENT MANAGEMENT ORGANIZATION

**SOUTHWEST AREA INCIDENT MANAGEMENT TEAM 3**

Southwest IMT 3  
9/10/2020 2111  
Acres from IR and MMA  
North American 1983 Datum.

