

Ops - Div CC

Cameron Peak

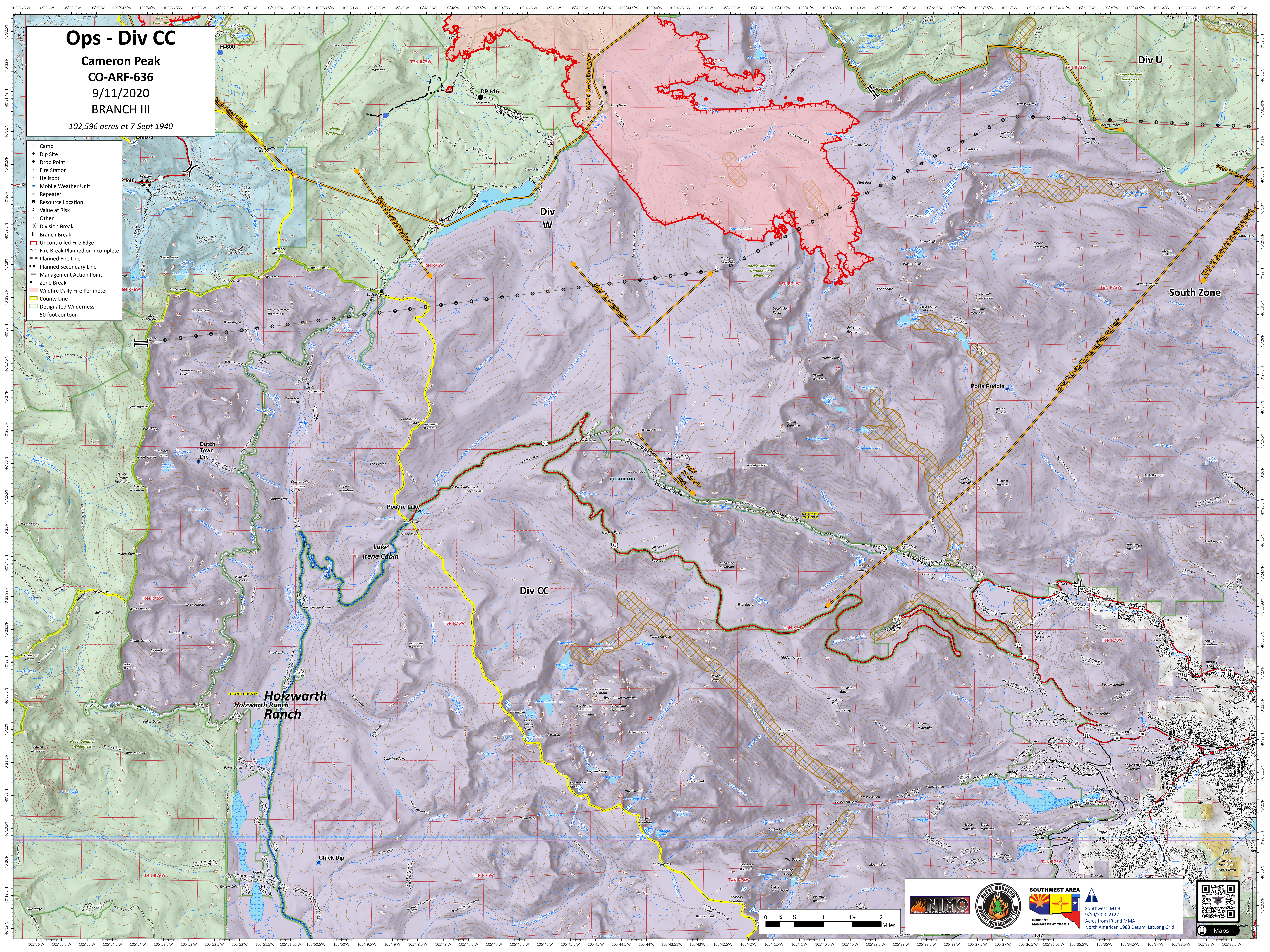
CO-ARF-636

9/11/2020

BRANCH III

102,596 acres at 7-Sept 1940

- Camp
- Dip Site
- Drop Point
- Fire Station
- Helipoint
- Mobile Weather Unit
- Repeater
- Resource Location
- Value at Risk
- Other
- ✕ Division Break
- ✕ Branch Break
- Uncontrolled Fire Edge
- Fire Break Planned or Incomplete
- Planned Fire Line
- Planned Secondary Line
- Management Action Point
- Zone Break
- Wildfire Daily Fire Perimeter
- County Line
- Designated Wilderness
- 50 foot contour



NIMO (National Incident Management Organization)

SWM (Southwest Area Incident Management Team)

SOUTHWEST AREA

Southwest IMT 3
9/10/2020 2122
Acres from IR and MMA
North American 1983 Datum, LatLong Grid

Ujp

0 1/4 1/2 1 1 1/2 2 Miles

