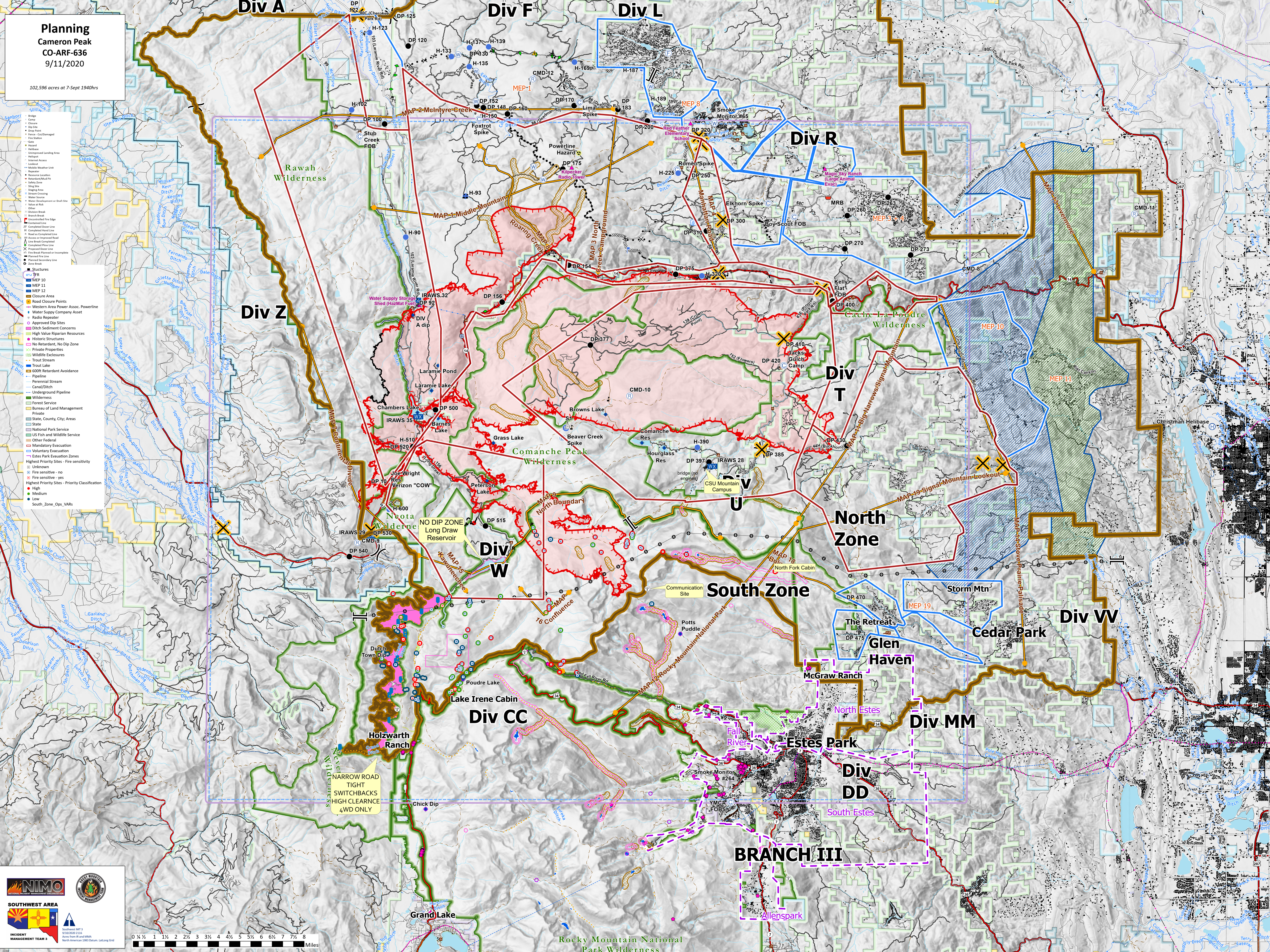
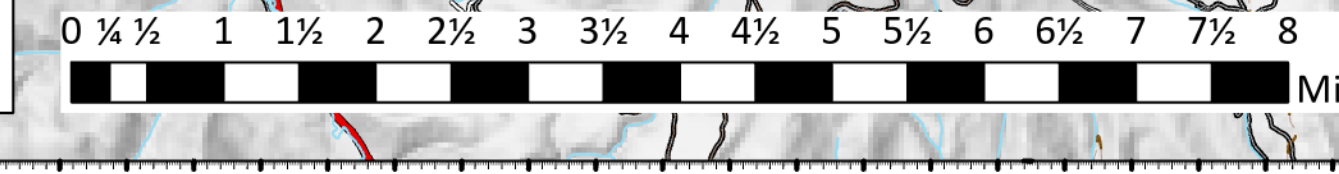


**Planning
Cameron Peak
CO-ARF-636
9/11/2020**

102,596 acres at 7-Sept 1940hrs

- Structures
- JFH
- MEP 10
- MEP 11
- MEP 12
- Closure Area
- Resource Location
- Western Area Power Assoc. Powerline
- Water Supply Company Asset
- Radio Repeater
- Approved Dip Sites
- Ditch Sediment Concerns
- High Value Riparian Resources
- Historic Structures
- No Retardant, No Dip Zone
- Private Properties
- Wildlife Exlosures
- Trout Stream
- Trout Lake
- 600ft Retardant Avoidance
- Pipeline
- Perennial Stream
- Canal/Ditch
- Underground Pipeline
- Wilderness
- Forest Service
- Bureau of Land Management
- Private
- State, County, City, Areas
- State
- National Park Service
- US Fish and Wildlife Service
- Other Federal
- Mandatory Evacuation
- Voluntary Evacuation
- Estes Park Evacuation Zones
- Highest Priority Sites - Fire sensitivity
- Unknown
- Fire sensitive - no
- Fire sensitive - yes
- Highest Priority Sites - Priority Classification
- High
- Medium
- Low
- South_Zone_Ops_VARs

NIMO
SOUTHWEST AREA
INCIDENT MANAGEMENT TEAM 3



Rocky Mountain National Park Wilderness