

Structure Atlas

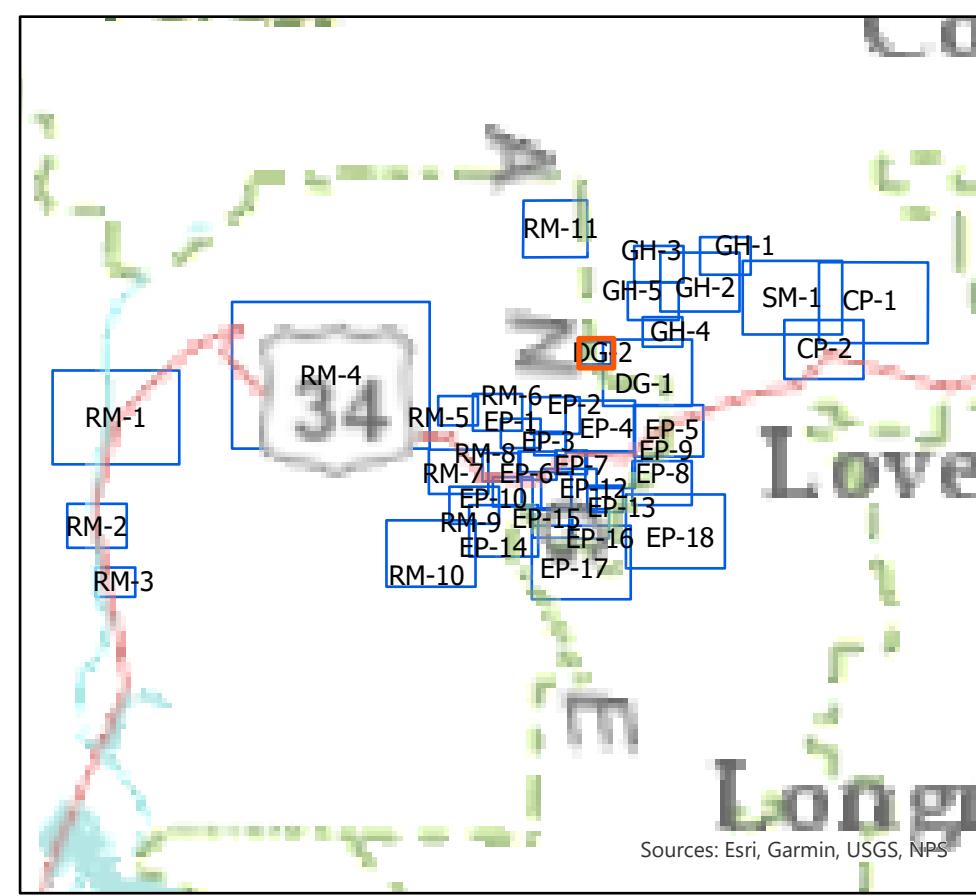
Map DG2

Cameron Peak
CO-ARF-000636

9/10/2020



Maps



NPS Wildland Fire Risk Assessments

- High Risk
- Moderate Risk
- Low Risk
- Not Found
- Not Surveyed
- No Wildland Risk
- Private - Not Surveyed



This QR code will take you to an online NIFC map with assessment data for each structure. No sign-in is required. You will need to zoom into northern Colorado to see structures in the Rocky Mountain National Park.

Structure

Layer2

Layer3

Layer4

Layer

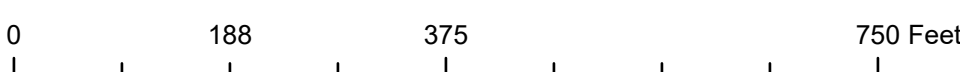
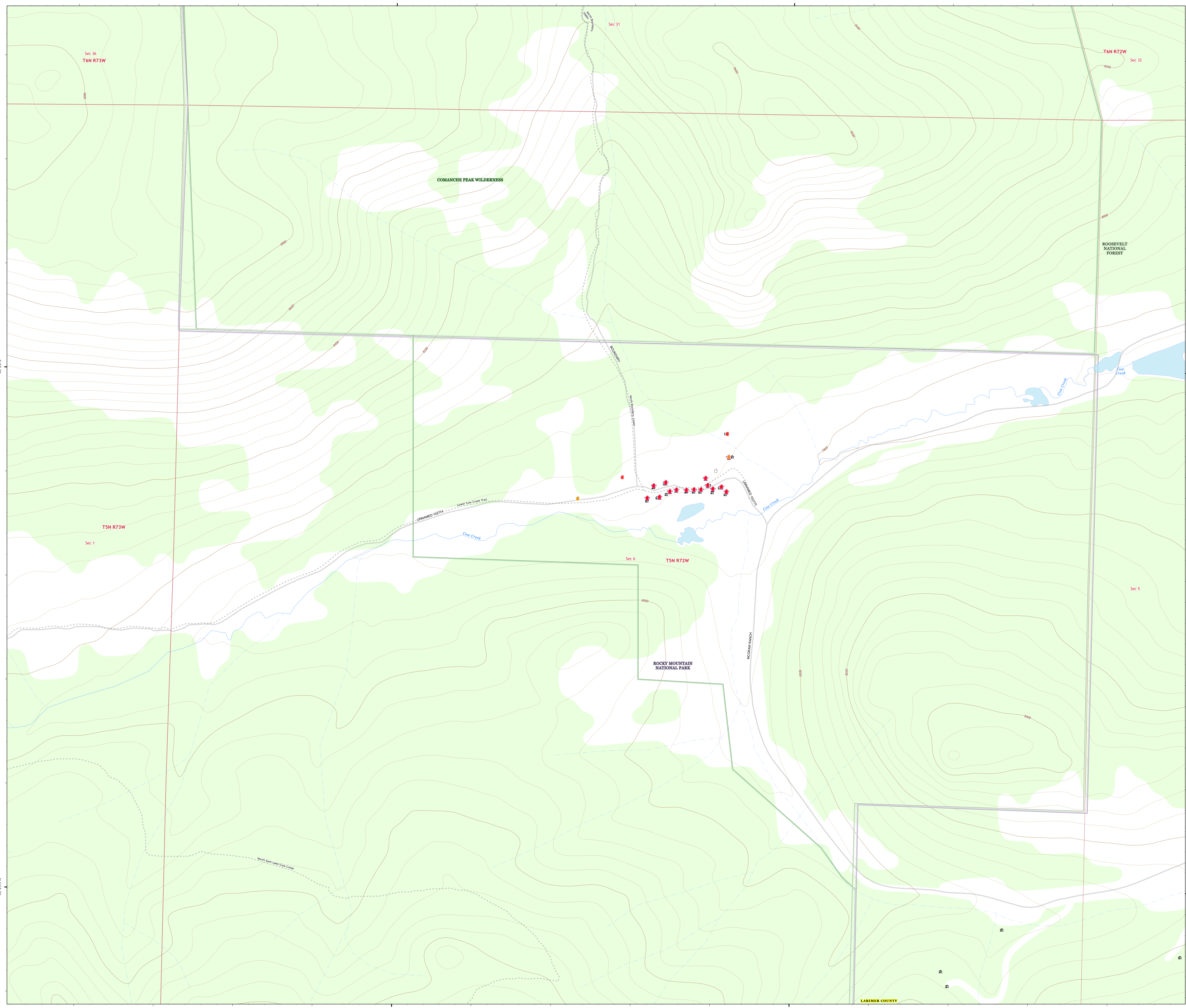
County or Equivalent

Wilderness

Forest Service

National Park Service

Woodland cover



Scale: 1:2,000



SOUTHWEST AREA



INCIDENT MANAGEMENT TEAM 3

9/10/2020 2047
Acres from IR and MMA
North American 1983 Datum, LatLong Grid

LARIMER COUNTY