

# Structure Atlas

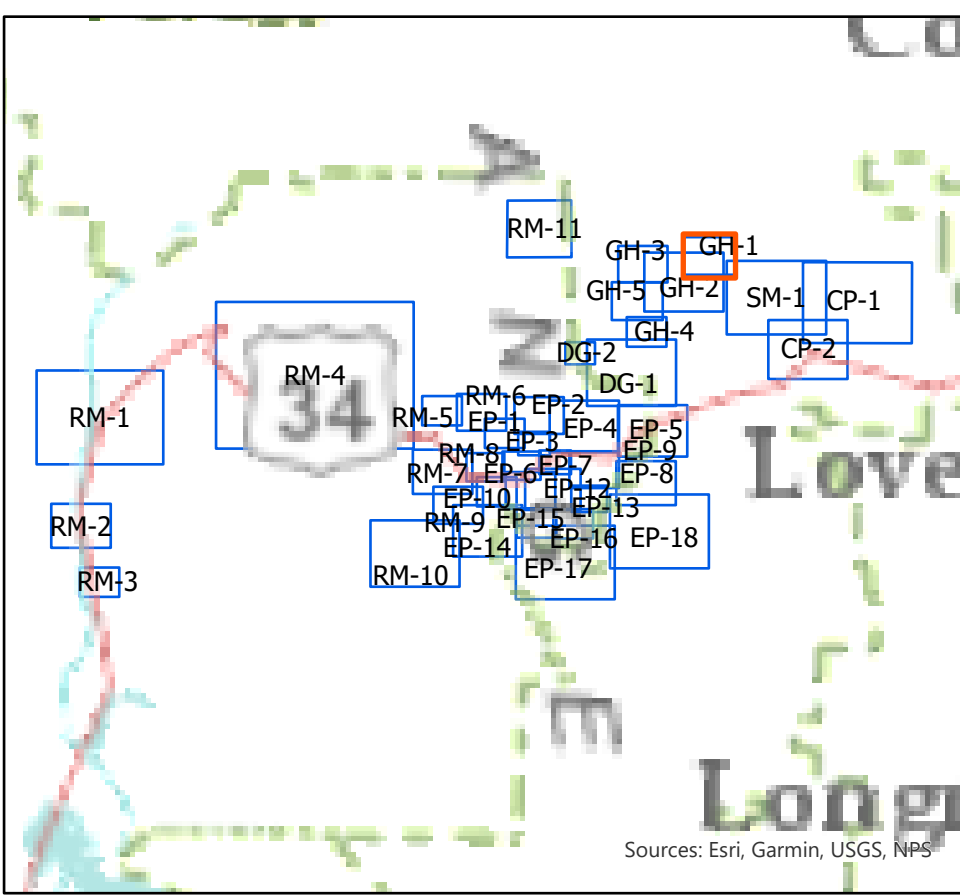
Map GH1

Cameron Peak  
CO-ARF-000636

9/10/2020



Maps



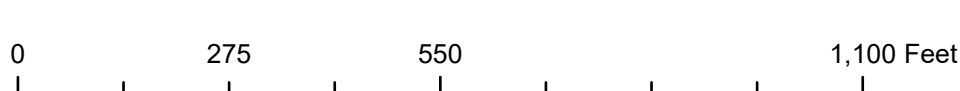
### NPS Wildland Fire Risk Assessments

- High Risk
- Moderate Risk
- Low Risk
- Not Found
- Not Surveyed
- No Wildland Risk
- Private - Not Surveyed



This QR code will take you to an online NIFC map with assessment data for each structure. No sign-in is required. You will need to zoom into northern Colorado to see structures in the Rocky Mountain National Park.

- Structure
- Trail
- Non-Perennial Stream
- Perennial Lake
- County or Equivalent
- Forest Service
- Woodland cover



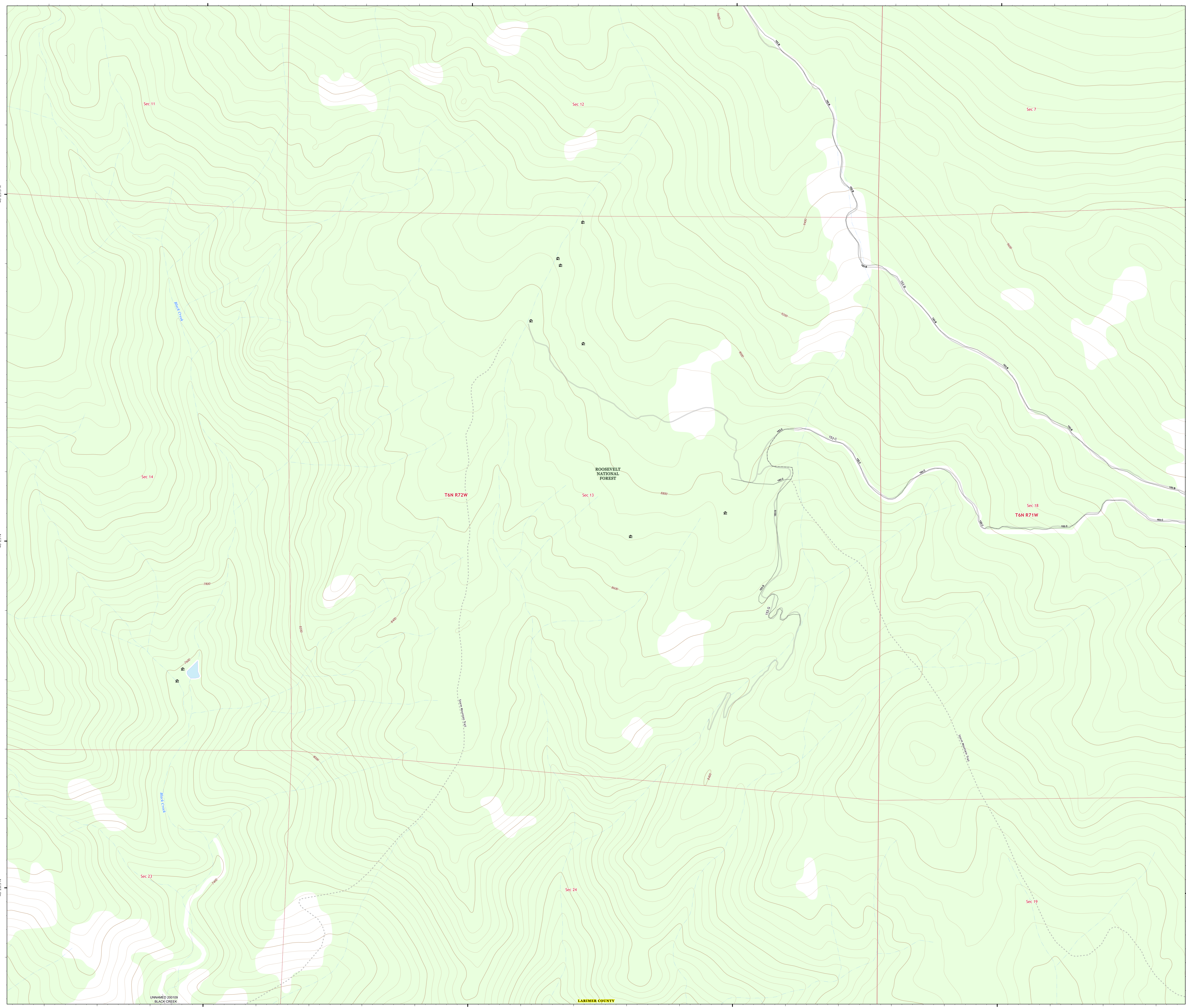
Scale: 1:3,000



### SOUTHWEST AREA



INCIDENT MANAGEMENT TEAM 3  
9/10/2020 2056  
Acres from IR and MMA  
North American 1983 Datum, LatLong Grid



UNNAMED 200189  
BLACK CREEK

LARIMER COUNTY