

Structure Atlas

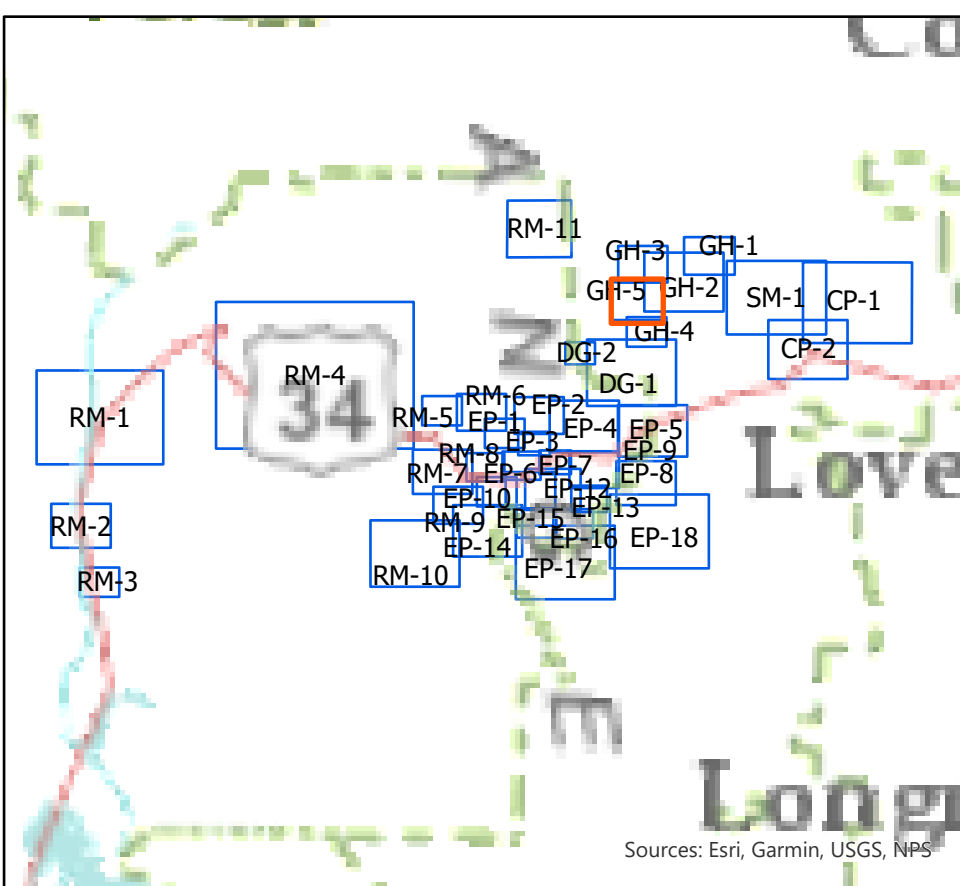
Map GH5

Cameron Peak
CO-ARF-00636

9/10/2020



Maps



NPS Wildland Fire Risk Assessments

- High Risk
- Moderate Risk
- Low Risk
- Not Found
- Not Surveyed
- No Wildland Risk
- Private - Not Surveyed



This QR code will take you to an online NIFC map with assessment data for each structure. No sign-in is required. You will need to zoom into northern Colorado to see structures in the Rocky Mountain National Park.

Structure

Layer2

Layer3

Layer4

Layer

County or Equivalent

Wilderness

Forest Service

Woodland cover

0 275 550 1,100 Feet

Scale: 1:3,000

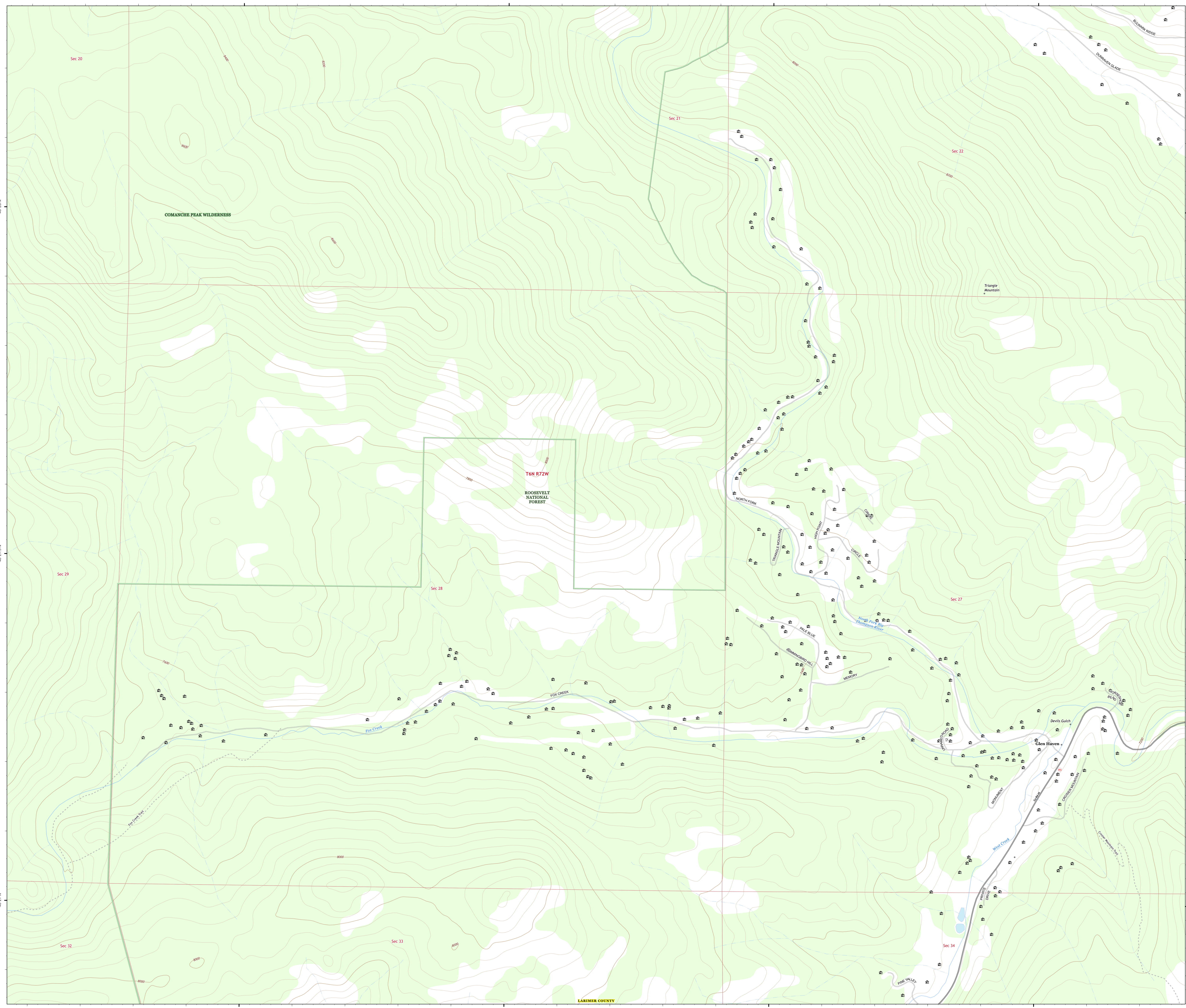


SOUTHWEST AREA



INCIDENT MANAGEMENT TEAM 3

9/10/2020 2058
Acres from IR and MMA
North American 1983 Datum, LatLong Grid



LARIMER COUNTY