

# Medical Evacuation

Cameron Peak  
CO-ARF-636

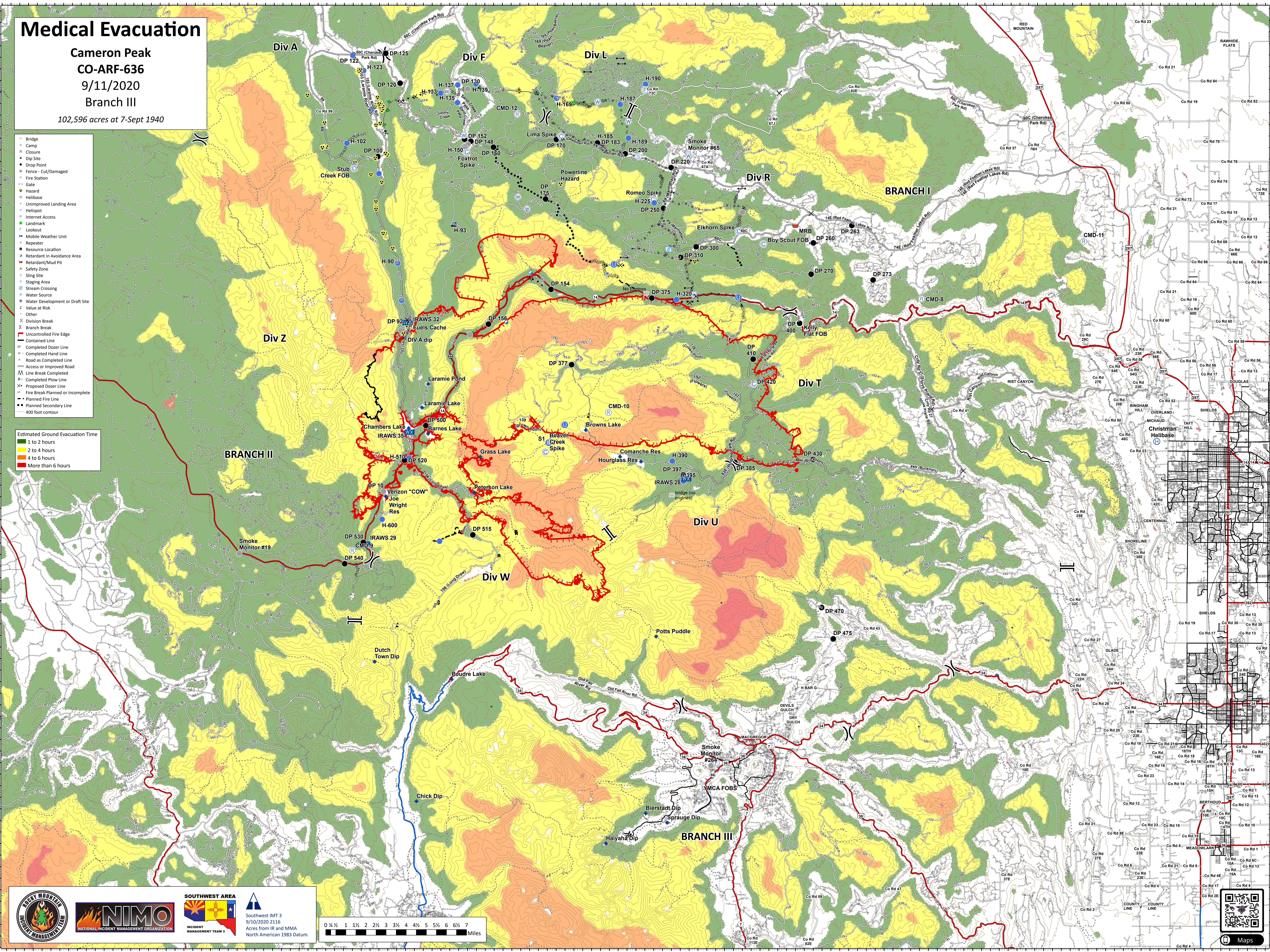
9/11/2020

Branch III

102,596 acres at 7-Sept 1940

- Bridge
- Camp
- Closure
- Dip Site
- Drop Point
- Fence - Cut/Damaged
- Fire Station
- Gate
- Hazard
- Helibase
- Unimproved Landing Area
- Helispot
- Internet Access
- Landmark
- Lookout
- Mobile Weather Unit
- Repeater
- Resource Location
- Retardant in Avoidance Area
- Retardant/Mud Pit
- Safety Zone
- Sling Site
- Staging Area
- Stream Crossing
- Water Source
- Water Development or Draft Site
- Value at Risk
- Other
- Division Break
- Branch Break
- Uncontrolled Fire Edge
- Contained Line
- Completed Dozer Line
- Completed Hand Line
- Road as Completed Line
- Access or Improved Road
- Line Break Completed
- Completed Plow Line
- Proposed Dozer Line
- Fire Break Planned or Incomplete
- Planned Fire Line
- Planned Secondary Line
- 400 foot contour

- Estimated Ground Evacuation Time
- 1 to 2 hours
  - 2 to 4 hours
  - 4 to 6 hours
  - More than 6 hours



Southwest IMT 3  
9/10/2020 2116  
Acres from IR and MMA  
North American 1983 Datum.

