



NPS Wildand Fire Risk Assessment - Facility Assessment

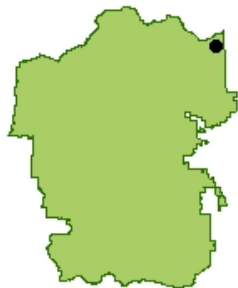
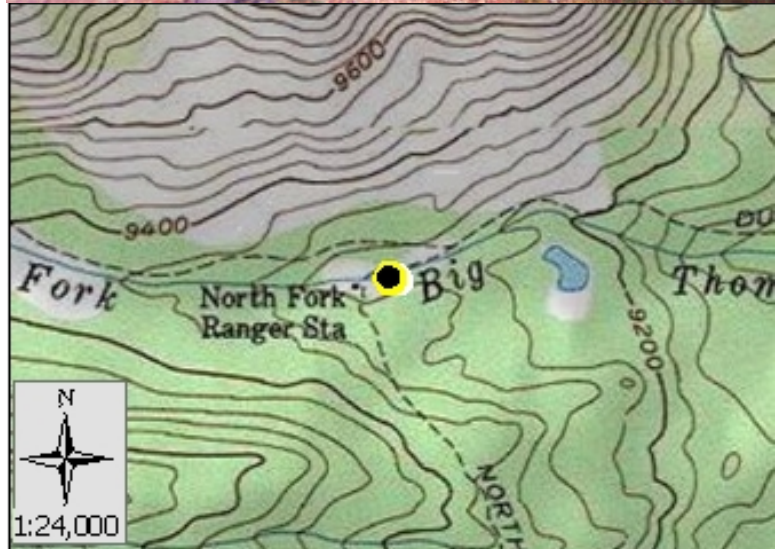
For more information visit <https://wildfire-risk-assessments-nifc.hub.arcgis.com>

Facility: B-1042-N Pit Privy, at North Fork Patrol Cabin

Unit - Location: ROMO - Backcountry Patrol Cabin
FMSS ID: 37214
Structure Type: Building
Structure Use: Public
Owner: NPS
Field Crew: Vaughn
Last Site Visit Date: 9/26/2014

Rating: High
Protection Level : Not Designated
Resources of Concern Present? Unknown
Occupied? No
Local ID: [Local_ID]
In a Community? No
Lat(WGS84): 40° 29.8295' **Long(WGS84):** -105° 31.883'

Primary Access: Foot
Ingress/Egress: N/A, access by foot, boat or air only
Access Width: N/A, access by foot, boat or air only
Access Condition: N/A, access by foot, boat or air only
Bridge Condition: None/nonflammable,load limit will not limit response
Access & Turnarounds: N/A,access by foot,boat,or air only
Facility Number/Sign: None or not clearly visible
Defensible Space: No defensible space
Fuel Load (w/in 300 ft): Heavy
Fuel Type (w/in 300ft): Shrub or timber
Topography (w/in 300ft): Slope <5%
Roof Material: Combustible or no roof
Siding Material: Wood or open sided
Foundation: Open or deck
Fences/Decks: Combustible, adjacent, clear of veg/debris
Firewood: None
Propane Tanks: None
Water Supply: Reliable water source nearby
Overhead Hazards: No overhead hazards
Safety Zones: No safety zone(s) in area
Additional Obstacles: None
Triage Category:
Hazmat:
Assessment Comments: Treatment / tactics included in cabin assessment.



● Facility
■ NPS Boundary

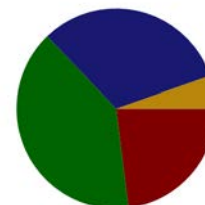
Score: 113
Rating: High



Asset Priority Index (API):
71



Factors Driving the Ratings



■ Access
■ Environment
■ Structure
■ Protection



NPS Wildand Fire Risk Assessment - Facility Assessment

For more information visit <https://wildfire-risk-assessments-nifc.hub.arcgis.com>

Facility: B-1042-N Pit Privy, at North Fork Patrol Cabin

Unit - Location: ROMO - Backcountry Patrol Cabin
FMSS ID: 37214
Field Crew: Vaughn
Last Site Visit Date: 9/26/2014

Rating: High
Protection Level : Not Designated
Local ID: [Local_ID]
Lat(WGS84): 40° 29.8295' Long(WGS84): -105° 31.883'



ROMO_37214_B-1042-N Pit Privy, at North Fork Patrol Cabin_Front2.jpg



ROMO_37214_B-1042-N Pit Privy, at North Fork Patrol Cabin_Front.jpg



NPS Wildand Fire Risk Assessment - Facility Assessment

For more information visit <https://wildfire-risk-assessments-nifc.hub.arcgis.com>

Facility: DITCH CAMP #3

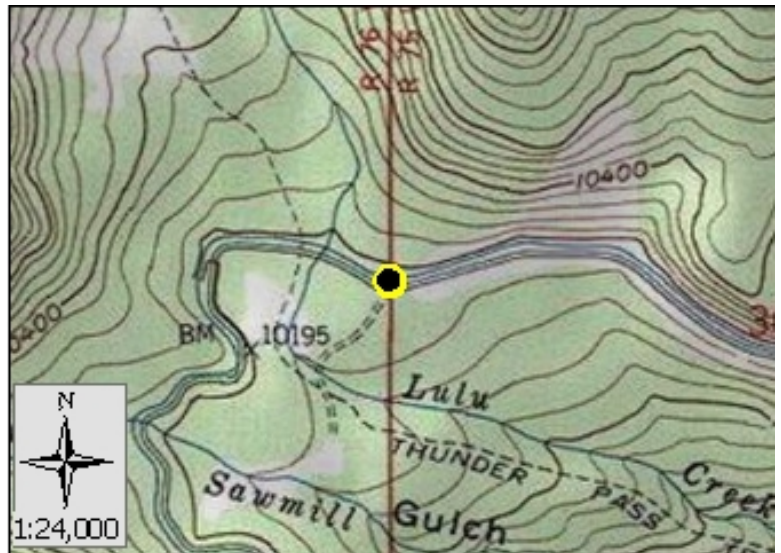
Unit - Location: ROMO - Backcountry Patrol Cabin
FMSS ID:
Structure Type: Building
Structure Use: Unknown
Owner: NPS
Field Crew:
Last Site Visit Date:

Rating: Not Surveyed
Protection Level : Not Designated
Resources of Concern Present? Unknown
Occupied?
Local ID: [Local_ID]
In a Community? No
Lat(WGS84): 40° 27.6642' Long(WGS84): -105° 51.6408'

Primary Access: Road
Ingress/Egress:
Access Width:
Access Condition:
Bridge Condition:
Access & Turnarounds:
Facility Number/Sign:
Defensible Space:
Fuel Load (w/in 300 ft):
Fuel Type (w/in 300ft):
Topography (w/in 300ft):
Roof Material:
Siding Material:
Foundation:
Fences/Decks:
Firewood:
Propane Tanks:
Water Supply:
Overhead Hazards:
Safety Zones:
Additional Obstacles:
Triage Category:
Hazmat:
Assessment Comments:



● Facility
■ NPS Boundary



Score:
Rating: Not Surveyed



Asset Priority Index (API):
N/A



Factors Driving the Ratings



NPS Wildand Fire Risk Assessment - Facility Assessment

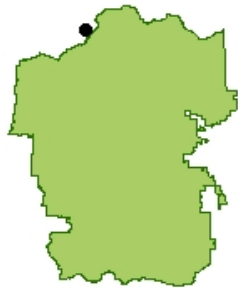
For more information visit <https://wildfire-risk-assessments-nifc.hub.arcgis.com>

Facility: B-0909F Contact Station (NPS/USFS)

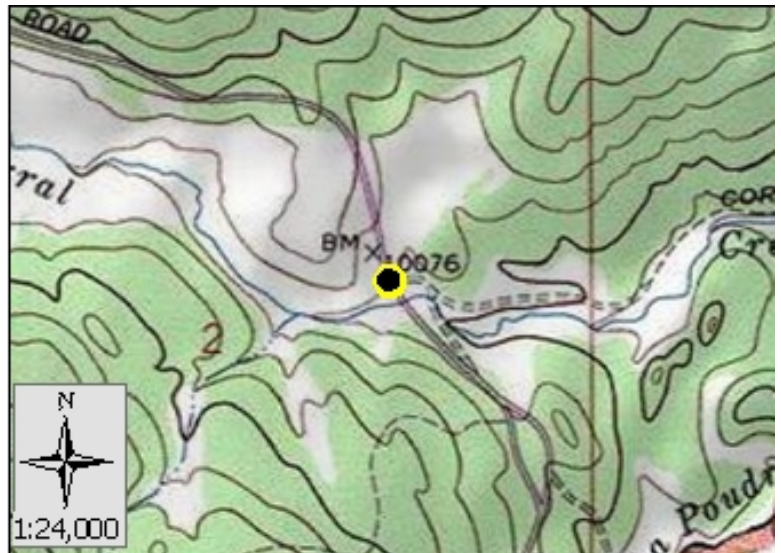
Unit - Location: ROMO - Backcountry Patrol Cabin
FMSS ID: 14864
Structure Type: Building
Structure Use: Public
Owner: NPS
Field Crew:
Last Site Visit Date:

Rating: Not Surveyed
Protection Level : Not Designated
Resources of Concern Present? Unknown
Occupied?
Local ID: [Local_ID]
In a Community? No
Lat(WGS84): 40° 31.0714' Long(WGS84): -105° 46.2557'

Primary Access: Road
Ingress/Egress:
Access Width:
Access Condition:
Bridge Condition:
Access & Turnarounds:
Facility Number/Sign:
Defensible Space:
Fuel Load (w/in 300 ft):
Fuel Type (w/in 300ft):
Topography (w/in 300ft):
Roof Material: Combustible or no roof
Siding Material: Log
Foundation:
Fences/Decks:
Firewood:
Propane Tanks:
Water Supply:
Overhead Hazards:
Safety Zones:
Additional Obstacles:
Triage Category:
Hazmat:
Assessment Comments: Access from Hwy 14 on Long Draw Road.



● Facility
■ NPS Boundary



Score:
Rating: Not Surveyed



Asset Priority Index (API):
88



Factors Driving the Ratings



NPS Wildand Fire Risk Assessment - Facility Assessment

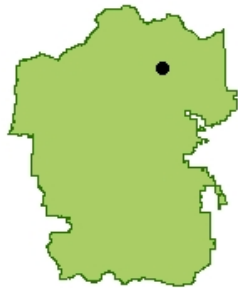
For more information visit <https://wildfire-risk-assessments-nifc.hub.arcgis.com>

Facility: B-0200-H Patrol Cabin, Lawn Lake

Unit - Location: ROMO - Backcountry Patrol Cabin
FMSS ID: 37100
Structure Type: Building
Structure Use: Public
Owner: NPS
Field Crew:
Last Site Visit Date:

Rating: Not Surveyed
Protection Level : Not Designated
Resources of Concern Present? Unknown
Occupied?
Local ID: [Local_ID]
In a Community? No
Lat(WGS84): 40° 27.8976' Long(WGS84): -105° 37.6592'

Primary Access: Road
Ingress/Egress:
Access Width:
Access Condition:
Bridge Condition:
Access & Turnarounds:
Facility Number/Sign:
Defensible Space:
Fuel Load (w/in 300 ft):
Fuel Type (w/in 300ft):
Topography (w/in 300ft):
Roof Material: Combustible or no roof
Siding Material:
Foundation:
Fences/Decks:
Firewood:
Propane Tanks:
Water Supply:
Overhead Hazards:
Safety Zones:
Additional Obstacles:
Triage Category:
Hazmat:
Assessment Comments: 6 mile hike one way.



● Facility
■ NPS Boundary



Score:
Rating: Not Surveyed



Asset Priority Index (API):
71



Factors Driving the Ratings



NPS Wildand Fire Risk Assessment - Facility Assessment

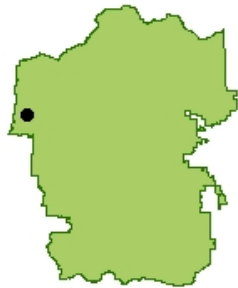
For more information visit <https://wildfire-risk-assessments-nifc.hub.arcgis.com>

Facility: B-0846-N Radio Repeater (Red Mountain)

Unit - Location: ROMO - Backcountry Repeater
FMSS ID: 37142
Structure Type: Building
Structure Use: Admin
Owner: NPS
Field Crew:
Last Site Visit Date:

Rating: Not Surveyed
Protection Level : Not Designated
Resources of Concern Present? Unknown
Occupied?
Local ID: [Local_ID]
In a Community? No
Lat(WGS84): 40° 23.971' Long(WGS84): -105° 52.7132'

Primary Access: Road
Ingress/Egress:
Access Width:
Access Condition:
Bridge Condition:
Access & Turnarounds:
Facility Number/Sign:
Defensible Space:
Fuel Load (w/in 300 ft):
Fuel Type (w/in 300ft):
Topography (w/in 300ft):
Roof Material: Combustible or no roof
Siding Material: Wood or open sided
Foundation:
Fences/Decks:
Firewood:
Propane Tanks:
Water Supply:
Overhead Hazards:
Safety Zones:
Additional Obstacles:
Triage Category:
Hazmat:
Assessment Comments:



● Facility
■ NPS Boundary



Score:
Rating: Not Surveyed



Asset Priority Index (API):
88



Factors Driving the Ratings



NPS Wildand Fire Risk Assessment - Facility Assessment

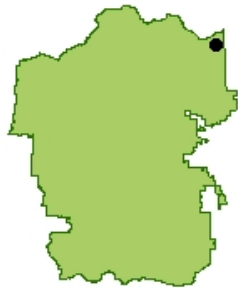
For more information visit <https://wildfire-risk-assessments-nifc.hub.arcgis.com>

Facility: B-0017-H Patrol Cabin, North Fork

Unit - Location: ROMO - Backcountry Patrol Cabin
FMSS ID: 37058
Structure Type: Building
Structure Use: Admin
Owner: NPS
Field Crew: Vaughn
Last Site Visit Date: 9/26/2014

Rating: High
Protection Level : Full
Resources of Concern Present? Unknown
Occupied? Yes
Local ID: [Local_ID]
In a Community? No
Lat(WGS84): 40° 29.8268' **Long(WGS84):** -105° 31.8703'

Primary Access: Foot
Ingress/Egress: N/A, access by foot, boat or air only
Access Width: N/A, access by foot, boat or air only
Access Condition: N/A, access by foot, boat or air only
Bridge Condition: None/nonflammable,load limit will not limit response
Access & Turnarounds: N/A,access by foot,boat,or air only
Facility Number/Sign: Marked and clearly visible
Defensible Space: <30 ft treated
Fuel Load (w/in 300 ft): Heavy
Fuel Type (w/in 300ft): Shrub or timber
Topography (w/in 300ft): Slope <5%
Roof Material: Combustible or no roof
Siding Material: Wood or open sided
Foundation: Closed, < 6in masonry exposed
Fences/Decks: Combustible but separated from facility
Firewood: >30 ft from facility
Propane Tanks: None
Water Supply: Reliable water source nearby
Overhead Hazards: No overhead hazards
Safety Zones: No safety zone(s) in area
Additional Obstacles: None
Triage Category:
Hazmat:
Assessment Comments: Historic cabin



● Facility
■ NPS Boundary

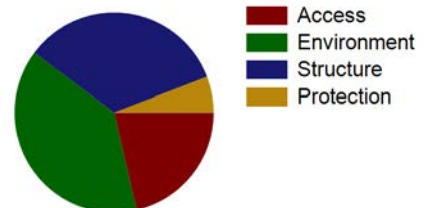
Score: 103
Rating: High



Asset Priority Index (API):
71



Factors Driving the Ratings





NPS Wildand Fire Risk Assessment - Facility Assessment

For more information visit <https://wildfire-risk-assessments-nifc.hub.arcgis.com>

Facility: B-0017-H Patrol Cabin, North Fork

Unit - Location: ROMO - Backcountry Patrol Cabin
FMSS ID: 37058
Field Crew: Vaughn
Last Site Visit Date: 9/26/2014

Rating: High
Protection Level : Full
Local ID: [Local_ID]
Lat(WGS84): 40° 29.8268' Long(WGS84): -105° 31.8703'

Recommended Treatments

Zone	Treatment Description	Pers Hours	Treatment Cycle	Treatment Priority	Treatment Status	Date Next Treatment Recommended	Equipment Description	Equip Qty
1	Mow dead/dying grass to less than 4 inches -	1	1 Year		Unknown	9/26/2014	Miscellaneous-Weed Wacker	1
	Flammable ground cover such as leaf litter, woody debris or highly flammable vegetation should be removed -	1	1 Year		Unknown	9/26/2014	-	
	Open crown spacing 10 to 30 feet depending on slope -	20	5 Year		Unknown	9/26/2014	Miscellaneous-	1
2	Open crown spacing 10 to 30 feet depending on slope -	40	5 Year		Unknown	9/26/2014	-	
	Firewood should be moved at least 50 ft from the facility and 15 horizontal feet from tree canopies -	1	5 Year		Unknown	9/26/2014	-	
	Flammable ground cover should be removed or isolated -	10	1 Year		Unknown	9/26/2014	-	
	Remove dead or dying component of shrubs and trees -	20	5 Year		Unknown	9/26/2014	-	
	Limb trees 6 to 15 feet above ground -	6	5 Year		Unknown	9/26/2014	-	



NPS Wildand Fire Risk Assessment - Facility Assessment

For more information visit <https://wildfire-risk-assessments-nifc.hub.arcgis.com>

Facility: B-0017-H Patrol Cabin, North Fork

Unit - Location: ROMO - Backcountry Patrol Cabin

FMSS ID: 37058

Field Crew: Vaughn

Last Site Visit Date: 9/26/2014

Rating: High

Protection Level : Full

Local ID: [Local_ID]

Lat(WGS84): 40° 29.8268' Long(WGS84): -105° 31.8703'

Recommended Tactics

Triage Category	Tactic Description	Pers Hours	Equipment Description	Equip Qty	
	Install sprinkler system - Equipment list sufficient for all structures in area.	4.00	Fuel-2 Cycle Mix, 32:1, GL	10	
			Hose-Cotton-synthetic 1.5" x 100ft,LG	3	
			Pump Kit-Volume 3, KT	2	
			Hose-Garden 0.75" NH x 50ft,LG	12	
			Sprinkler Kit-Sprinkler (2008) kit	3	
			Fuel Can-5 GL, DOT/OSHA	2	
	Fuels reduction -	120.00	-		
	Structure wrap - wrap structure and leave		20.00	Misc Structure Protection-Stapler, heavy duty, BX	2
				Misc Structure Protection-Staples, heavy duty 0.5", BX	1
				Misc Structure Protection-Structure wrap, 54" x300ft, RL	10



NPS Wildand Fire Risk Assessment - Facility Assessment

For more information visit <https://wildfire-risk-assessments-nifc.hub.arcgis.com>

Facility: B-0017-H Patrol Cabin, North Fork

Unit - Location: ROMO - Backcountry Patrol Cabin
FMSS ID: 37058
Field Crew: Vaughn
Last Site Visit Date: 9/26/2014

Rating: High
Protection Level : Full
Local ID: [Local_ID]
Lat(WGS84): 40° 29.8268' Long(WGS84): -105° 31.8703'



ROMO_37058_B-0017-H Patrol Cabin, North Fork_Front.jpg



ROMO_37058_B-0017-H Patrol Cabin, North Fork_C.jpg



ROMO_37058_B-0017-H Patrol Cabin, North Fork_C.jpg



ROMO_37058_B-0017-H Patrol Cabin, North Fork_B.jpg



ROMO_37058_B-0017-H Patrol Cabin, North Fork_A.jpg



NPS Wildand Fire Risk Assessment - Facility Assessment

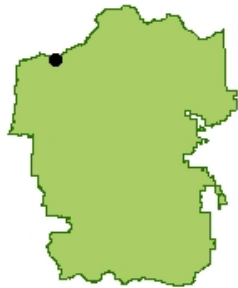
For more information visit <https://wildfire-risk-assessments-nifc.hub.arcgis.com>

Facility: B-0910-N Storage, Poudre Pass

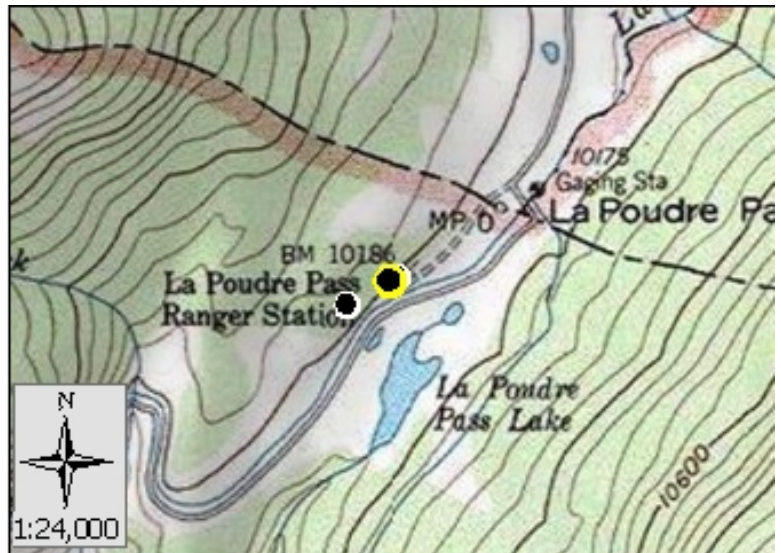
Unit - Location: ROMO - Backcountry Patrol Cabin
FMSS ID: 37147
Structure Type: Building
Structure Use: Admin
Owner: NPS
Field Crew:
Last Site Visit Date:

Rating: Not Surveyed
Protection Level : Not Designated
Resources of Concern Present? Unknown
Occupied?
Local ID: [Local_ID]
In a Community? Yes - La Poudre Pass Ranger Station
Lat(WGS84): 40° 28.5304' Long(WGS84): -105° 49.5349'

Primary Access: Road
Ingress/Egress:
Access Width:
Access Condition:
Bridge Condition:
Access & Turnarounds:
Facility Number/Sign:
Defensible Space:
Fuel Load (w/in 300 ft):
Fuel Type (w/in 300ft):
Topography (w/in 300ft):
Roof Material: Combustible or no roof
Siding Material:
Foundation:
Fences/Decks:
Firewood:
Propane Tanks:
Water Supply:
Overhead Hazards:
Safety Zones:
Additional Obstacles:
Triage Category:
Hazmat:
Assessment Comments: Access via Hwy 14 and Long Draw Road.



● Facility
■ NPS Boundary



Score:
Rating: Not Surveyed



Asset Priority Index (API):
7



Factors Driving the Ratings



NPS Wildand Fire Risk Assessment - Facility Assessment

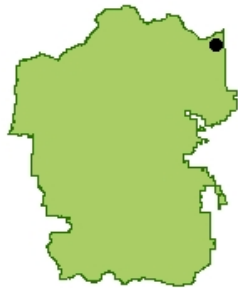
For more information visit <https://wildfire-risk-assessments-nifc.hub.arcgis.com>

Facility: B-0223-N Wood Shed North Fork

Unit - Location: ROMO - Backcountry Patrol Cabin
FMSS ID: 37102
Structure Type: Building
Structure Use: Admin
Owner: NPS
Field Crew: Vaughn
Last Site Visit Date: 9/26/2014

Rating: High
Protection Level : Not Designated
Resources of Concern Present? Unknown
Occupied? No
Local ID: [Local_ID]
In a Community? No
Lat(WGS84): 40° 29.8313' **Long(WGS84):** -105° 31.8731'

Primary Access: Foot
Ingress/Egress: N/A, access by foot, boat or air only
Access Width: N/A, access by foot, boat or air only
Access Condition: N/A, access by foot, boat or air only
Bridge Condition: None/nonflammable, load limit will not limit response
Access & Turnarounds: N/A, access by foot, boat, or air only
Facility Number/Sign: None or not clearly visible
Defensible Space: No defensible space
Fuel Load (w/in 300 ft): Heavy
Fuel Type (w/in 300ft): Shrub or timber
Topography (w/in 300ft): Slope <5%
Roof Material: Combustible or no roof
Siding Material: Wood or open sided
Foundation: Open or deck
Fences/Decks: Combustible but separated from facility
Firewood: >30 ft from facility
Propane Tanks: None
Water Supply: Reliable water source nearby
Overhead Hazards: No overhead hazards
Safety Zones: No safety zone(s) in area
Additional Obstacles: None
Triage Category:
Hazmat:
Assessment Comments: Treatments / tactics included in cabin assessment.



● Facility
■ NPS Boundary

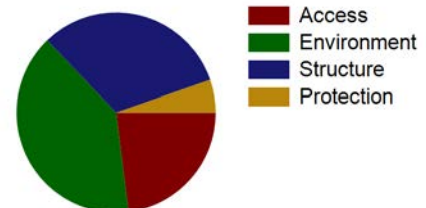
Score: 113
Rating: High



Asset Priority Index (API):
13



Factors Driving the Ratings





NPS Wildand Fire Risk Assessment - Facility Assessment

For more information visit <https://wildfire-risk-assessments-nifc.hub.arcgis.com>

Facility: B-0223-N Wood Shed North Fork

Unit - Location: ROMO - Backcountry Patrol Cabin
FMSS ID: 37102
Field Crew: Vaughn
Last Site Visit Date: 9/26/2014

Rating: High
Protection Level : Not Designated
Local ID: [Local_ID]
Lat(WGS84): 40° 29.8313' Long(WGS84): -105° 31.8731'



ROMO_37102_B-0223-N Wood Shed North Fork_Front2.jpg



ROMO_37102_B-0223-N Wood Shed North Fork_Front.jpg



NPS Wildand Fire Risk Assessment - Facility Assessment

For more information visit <https://wildfire-risk-assessments-nifc.hub.arcgis.com>

Facility: B-0014-H Fern Lake Patrol Cabin

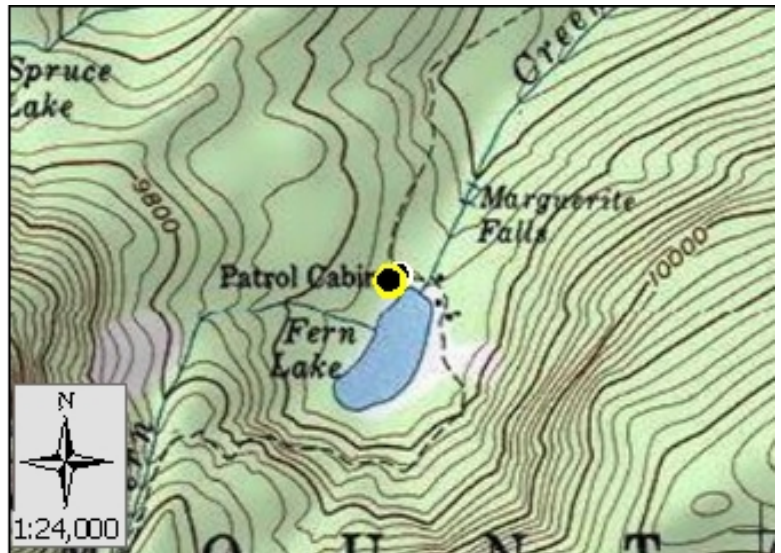
Unit - Location: ROMO - Backcountry Patrol Cabin
FMSS ID: 37057
Structure Type: Building
Structure Use: Admin
Owner: NPS
Field Crew: Dave Frey
Last Site Visit Date: 1/15/2014

Rating: High
Protection Level : Full
Resources of Concern Present? Unknown
Occupied? No
Local ID: [Local_ID]
In a Community? No
Lat(WGS84): 40° 20.2884' Long(WGS84): -105° 40.587'

Primary Access: Foot
Ingress/Egress: N/A, access by foot, boat or air only
Access Width: N/A, access by foot, boat or air only
Access Condition: N/A, access by foot, boat or air only
Bridge Condition: None/nonflammable,load limit will not limit response
Access & Turnarounds: N/A,access by foot,boat,or air only
Facility Number/Sign: Marked and clearly visible
Defensible Space: 30 ft treated
Fuel Load (w/in 300 ft): Heavy
Fuel Type (w/in 300ft): Shrub or timber
Topography (w/in 300ft): Slope >40%
Roof Material: Combustible or no roof
Siding Material: Wood or open sided
Foundation: Open or deck
Fences/Decks: None or noncombustible
Firewood: 5ft to 30ft from facility
Propane Tanks: None
Water Supply: Reliable water source nearby
Overhead Hazards: No overhead hazards
Safety Zones: No safety zone(s) in area
Additional Obstacles: None
Triage Category:
Hazmat:
Assessment Comments: Historic cabin



● Facility
■ NPS Boundary



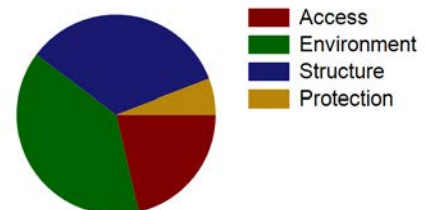
Score: 103
Rating: High



Asset Priority Index (API):
71



Factors Driving the Ratings





NPS Wildand Fire Risk Assessment - Facility Assessment

For more information visit <https://wildfire-risk-assessments-nifc.hub.arcgis.com>

Facility: B-0175-H Privy, Fern Lake Ranger Station

Unit - Location: ROMO - Backcountry Patrol Cabin
FMSS ID: 31350
Structure Type: Building
Structure Use: Public
Owner: NPS
Field Crew: Vaughn
Last Site Visit Date:

Rating: High
Protection Level : Not Designated
Resources of Concern Present? Unknown
Occupied? No
Local ID: [Local_ID]
In a Community? No
Lat(WGS84): 40° 20.2965' **Long(WGS84):** -105° 40.576'

Primary Access: Foot
Ingress/Egress: N/A, access by foot, boat or air only
Access Width: N/A, access by foot, boat or air only
Access Condition: N/A, access by foot, boat or air only
Bridge Condition: None/nonflammable,load limit will not limit response
Access & Turnarounds: N/A,access by foot,boat,or air only
Facility Number/Sign: Marked and clearly visible
Defensible Space: 30 ft treated
Fuel Load (w/in 300 ft): Heavy
Fuel Type (w/in 300ft): Shrub or timber
Topography (w/in 300ft): Slope >40%
Roof Material: Combustible or no roof
Siding Material: Wood or open sided
Foundation: Open or deck
Fences/Decks: None or noncombustible
Firewood: >30 ft from facility
Propane Tanks: None
Water Supply:
Overhead Hazards: No overhead hazards
Safety Zones: No safety zone(s) in area
Additional Obstacles: None
Triage Category:
Hazmat:
Assessment Comments:



● Facility
■ NPS Boundary



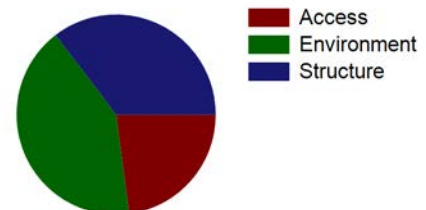
Score: 101
Rating: High



Asset Priority Index (API):
71



Factors Driving the Ratings





NPS Wildand Fire Risk Assessment - Facility Assessment

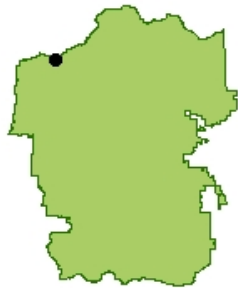
For more information visit <https://wildfire-risk-assessments-nifc.hub.arcgis.com>

Facility: B-0909-N Ranger Station & Patrol Cabin Poudre Pass

Unit - Location: ROMO - Backcountry Patrol Cabin
FMSS ID: 14867
Structure Type: Building
Structure Use: Public
Owner: NPS
Field Crew:
Last Site Visit Date:

Rating: Not Surveyed
Protection Level : Not Designated
Resources of Concern Present? Unknown
Occupied?
Local ID: [Local_ID]
In a Community? Yes - La Poudre Pass Ranger Station
Lat(WGS84): 40° 28.5348' Long(WGS84): -105° 49.5262'

Primary Access: Road
Ingress/Egress:
Access Width:
Access Condition:
Bridge Condition:
Access & Turnarounds:
Facility Number/Sign:
Defensible Space:
Fuel Load (w/in 300 ft):
Fuel Type (w/in 300ft):
Topography (w/in 300ft):
Roof Material: Noncombustible or not applicable
Siding Material: Wood or open sided
Foundation:
Fences/Decks:
Firewood:
Propane Tanks:
Water Supply:
Overhead Hazards:
Safety Zones:
Additional Obstacles:
Triage Category:
Hazard:
Assessment Comments: Access via Hwy 14 and Long Draw Road.



● Facility
■ NPS Boundary



Score:
Rating: Not Surveyed



Asset Priority Index (API):
83



Factors Driving the Ratings



NPS Wildand Fire Risk Assessment - Facility Assessment

For more information visit <https://wildfire-risk-assessments-nifc.hub.arcgis.com>

Facility: B-0239-H Patrol Cabin, Thunder Lake

Unit - Location: ROMO - Backcountry Patrol Cabin
FMSS ID: 37105
Structure Type: Building
Structure Use: Admin
Owner: NPS
Field Crew: Dave Frey
Last Site Visit Date: 1/15/2014

Rating: High
Protection Level : Not Designated
Resources of Concern Present? Unknown
Occupied? No
Local ID: [Local_ID]
In a Community? No
Lat(WGS84): 40° 13.3417' **Long(WGS84):** -105° 38.6896'

Primary Access: Foot
Ingress/Egress: N/A, access by foot, boat or air only
Access Width: N/A, access by foot, boat or air only
Access Condition: N/A, access by foot, boat or air only
Bridge Condition: None/nonflammable,load limit will not limit response
Access & Turnarounds: N/A,access by foot,boat,or air only
Facility Number/Sign: Marked and clearly visible
Defensible Space: 30 ft treated
Fuel Load (w/in 300 ft): Moderate
Fuel Type (w/in 300ft): Shrub or timber
Topography (w/in 300ft): Slope >40%
Roof Material: Combustible or no roof
Siding Material: Wood or open sided
Foundation: Closed, < 6in masonry exposed
Fences/Decks: None or noncombustible
Firewood: Adjacent to/under deck of facility
Propane Tanks: None
Water Supply: Reliable water source nearby
Overhead Hazards: No overhead hazards
Safety Zones: No safety zone(s) in area
Additional Obstacles: None
Triage Category:
Hazmat:
Assessment Comments: Historic cabin



● Facility
■ NPS Boundary



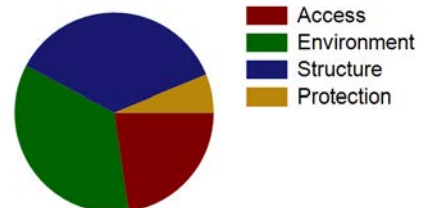
Score: 97
Rating: High



Asset Priority Index (API):
71



Factors Driving the Ratings





NPS Wildand Fire Risk Assessment - Facility Assessment

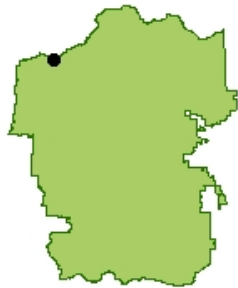
For more information visit <https://wildfire-risk-assessments-nifc.hub.arcgis.com>

Facility: B-0782-N Old Poudre Pass Cabin

Unit - Location: ROMO - Backcountry Patrol Cabin
FMSS ID: 91556
Structure Type: Building
Structure Use: Admin
Owner: NPS
Field Crew:
Last Site Visit Date:

Rating: Not Surveyed
Protection Level : Not Designated
Resources of Concern Present? Unknown
Occupied?
Local ID: [Local_ID]
In a Community? Yes - La Poudre Pass Ranger Station
Lat(WGS84): 40° 28.5043' **Long(WGS84):** -105° 49.6013'

Primary Access: Road
Ingress/Egress:
Access Width:
Access Condition:
Bridge Condition:
Access & Turnarounds:
Facility Number/Sign:
Defensible Space:
Fuel Load (w/in 300 ft):
Fuel Type (w/in 300ft):
Topography (w/in 300ft):
Roof Material: Fire resistant- tar,rubberized
Siding Material: Wood or open sided
Foundation:
Fences/Decks:
Firewood:
Propane Tanks:
Water Supply:
Overhead Hazards:
Safety Zones:
Additional Obstacles:
Triage Category:
Hazmat:
Assessment Comments: Access via Hwy 14 and Long Draw Road.



● Facility
■ NPS Boundary



Score:
Rating: Not Surveyed



Asset Priority Index (API):
0



Factors Driving the Ratings