



# NPS Wildand Fire Risk Assessment - Facility Assessment

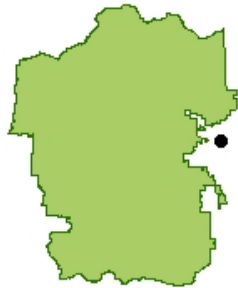
For more information visit <https://wildfire-risk-assessments-nifc.hub.arcgis.com>

## Facility: B-0679-N Radio Shed, Prospect Mountain

Unit - Location: ROMO - Estes Park  
FMSS ID: 37132  
Structure Type: Building  
Structure Use: Admin  
Owner: NPS  
Field Crew:  
Last Site Visit Date:

Rating: Not Surveyed  
Protection Level : Not Designated  
Resources of Concern Present? Unknown  
Occupied?  
Local ID: [Local\_ID]  
In a Community? No  
Lat(WGS84): 40° 21.6164' Long(WGS84): -105° 31.2069'

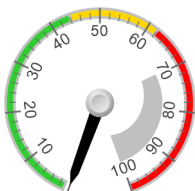
Primary Access: Road  
Ingress/Egress:  
Access Width:  
Access Condition:  
Bridge Condition:  
Access & Turnarounds:  
Facility Number/Sign:  
Defensible Space:  
Fuel Load (w/in 300 ft):  
Fuel Type (w/in 300ft):  
Topography (w/in 300ft):  
Roof Material: Noncombustible or not applicable  
Siding Material: Wood or open sided  
Foundation:  
Fences/Decks:  
Firewood:  
Propane Tanks:  
Water Supply:  
Overhead Hazards:  
Safety Zones:  
Additional Obstacles:  
Triage Category:  
Hazmat:  
Assessment Comments:



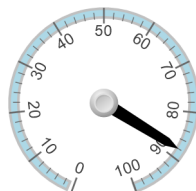
● Facility  
■ NPS Boundary



Score:  
Rating: Not Surveyed



Asset Priority Index (API):  
88



Factors Driving the Ratings