



NPS Wildland Fire Risk Assessment - Community Assessment

For more information visit <https://wildfire-risk-assessments-nifc.hub.arcgis.com>

Community: Fall River Pass
Unit - Location: ROMO - Fall River Road
Field Crew: Dave Frey
Last Site Visit Date:

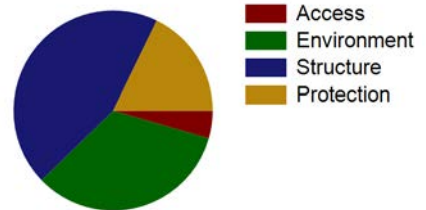
Count of facilities in Community: 5
Count of occupied facilities: 2
Count of facilities by Rating:

High 0
Moderate 2
Low 3
No Wildland Risk 0
Not Surveyed 0

Assessment

Primary Access: Road
Ingress/Egress: Two or more roads in/out
Access Width: 2 lanes (>24ft)
Access Condition: Surfaced-paved, grade>5%
Bridge Condition: None/nonflammable,load limit will not limit response
Access & Turnarounds: Access is <300 ft from facility w/turnaround
Facility Numbers/Signs: Marked and clearly visible
Defensible Space: >100ft treated
Fuel Load (w/in 300 ft): Light
Fuel Type (w/in 300ft): Grass,tundra,northern hardwood litter
Topography (w/in 300ft): Slope >40%
Topographical Features:None
Roof Material: Combination of fire resisitant and combustible
Building Construction: Nonflammable/fire resistant siding,flammable deck
Building Density: Buildings are at least 100 ft apart
Utility Placement: Both aboveground
Water Supply: Reliable water source nearby
Overhead Hazards: No overhead hazards
Safety Zones: Potential saftey zone(s) in area
Additional Obstacles: None

Factors Driving the Ratings



Community: Fall River Pass
Unit - Location: ROMO - Fall River Road
Field Crew: Dave Frey
Last Site Visit Date:

Facility Summary

Common Name	FMSS ID	Occupied	Facility Type	Score	Rating
B-0543-N Alpine Visitor Center & Apartments	25455	Y	Building	53	Moderate
B-0170-N Trail Ridge Store	25447	Y	Building	51	Moderate
B-0692-N Generator House	25467	N	Building	26	Low
B-0171-N Pumphouse, Fall River Pass	98018	N	Building	26	Low
Vault Toilet		N	Toilet	22	Low



NPS Wildand Fire Risk Assessment - **Community Assessment**

For more information visit <https://wildfire-risk-assessments-nifc.hub.arcgis.com>

Community: *Fall River Pass*

Unit - Location: ROMO - Fall River Road

Field Crew: Dave Frey

Last Site Visit Date:

No Recommended Treatment Data Available



NPS Wildland Fire Risk Assessment - **Community Assessment**

For more information visit <https://wildfire-risk-assessments-nifc.hub.arcgis.com>

Community: *Fall River Pass*

Unit - Location: ROMO - Fall River Road

Field Crew: Dave Frey

Last Site Visit Date:

Recommended Tactics

Tactic Description	Pers Hours	Equipment Description	Equip Qty
- The Fall River Pass community is located above tree line on Trail Ridge road. This is a high alpine environment with tundra the only fuels surrounding the area. There is little, if any, threat of a Wildland fire destroying buildings in this community.	0	-	



NPS Wildand Fire Risk Assessment - Facility Assessment

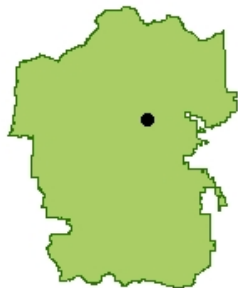
For more information visit <https://wildfire-risk-assessments-nifc.hub.arcgis.com>

Facility: B-1093-N Restroom/Multi-use Building

Unit - Location: ROMO - Fall River Road
FMSS ID: 69688
Structure Type: Building
Structure Use: Public
Owner: NPS
Field Crew: Dave Frey
Last Site Visit Date: 1/16/2014

Rating: Moderate
Protection Level : Full
Resources of Concern Present? Unknown
Occupied? Yes
Local ID: [Local_ID]
In a Community? No
Lat(WGS84): 40° 23.624' Long(WGS84): -105° 39.3453'

Primary Access: Road
Ingress/Egress: One roads in/out
Access Width: 2 lanes (>24ft)
Access Condition: Surfaced-paved, grade>5%
Bridge Condition: None/nonflammable,load limit will not limit response
Access & Turnarounds: Access is <300 ft from facility w/turnaround
Facility Number/Sign: Marked and clearly visible
Defensible Space: 100 ft treated
Fuel Load (w/in 300 ft): Heavy
Fuel Type (w/in 300ft): Shrub or timber
Topography (w/in 300ft): Slope >40%
Roof Material: Noncombustible or not applicable
Siding Material: Wood or open sided
Foundation: Closed, >30in masonry exposed or N/A
Fences/Decks: None or noncombustible
Firewood: None
Propane Tanks: None
Water Supply: Pressurized hydrant(s) or fixed sprinkler system
Overhead Hazards: No overhead hazards
Safety Zones: Potential safety zone(s) in area
Additional Obstacles: None
Triage Category:
Hazmat: Chlorine stored between restrooms
Assessment Comments:



● Facility
■ NPS Boundary



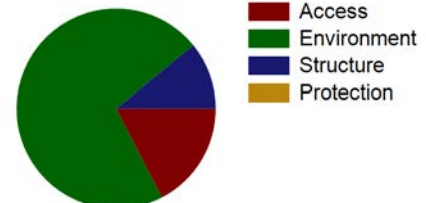
Score: 46
Rating: Moderate



Asset Priority Index (API):
55



Factors Driving the Ratings





NPS Wildand Fire Risk Assessment - Facility Assessment

For more information visit <https://wildfire-risk-assessments-nifc.hub.arcgis.com>

Facility: B-1093-N Restroom/Multi-use Building

Unit - Location: ROMO - Fall River Road

FMSS ID: 69688

Field Crew: Dave Frey

Last Site Visit Date: 1/16/2014

Rating: Moderate

Protection Level : Full

Local ID: [Local_ID]

Lat(WGS84): 40° 23.624' Long(WGS84): -105° 39.3453'

Recommended Tactics

Triage Category	Tactic Description	Pers Hours	Equipment Description	Equip Qty
	Fuels reduction - A type 6 engine and a squad could fight a small in this area	100.00	-	
	Other, please describe. - A major fire run through this area is nondefensible.		-	



NPS Wildand Fire Risk Assessment - Facility Assessment

For more information visit <https://wildfire-risk-assessments-nifc.hub.arcgis.com>

Facility: B-1093-N Restroom/Multi-use Building

Unit - Location: ROMO - Fall River Road
FMSS ID: 69688
Field Crew: Dave Frey
Last Site Visit Date: 1/16/2014

Rating: Moderate
Protection Level : Full
Local ID: [Local_ID]
Lat(WGS84): 40° 23.624' Long(WGS84): -105° 39.3453'



ROMO_69688_B-1093-N Restroom Multi-use Building_D.jpg



ROMO_69688_B-1093-N Restroom Multi-use Building_C.jpg



ROMO_69688_B-1093-N Restroom Multi-use Building_B.jpg



ROMO_69688_B-1093-N Restroom Multi-use Building_A.jpg



NPS Wildand Fire Risk Assessment - Facility Assessment

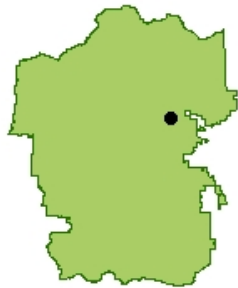
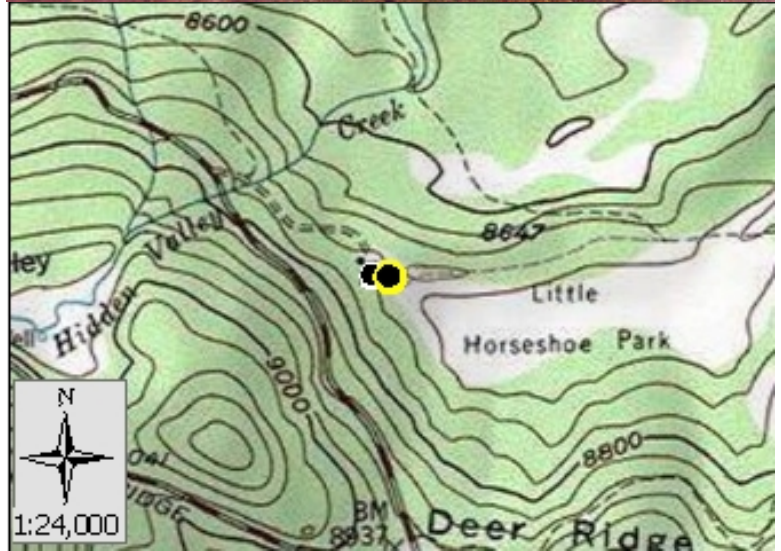
For more information visit <https://wildfire-risk-assessments-nifc.hub.arcgis.com>

Facility: B-0068-N Barn (Ashton) FY61 Little Horseshoe Park

Unit - Location: ROMO - Fall River Road
FMSS ID: 25481
Structure Type: Building
Structure Use: Admin
Owner: NPS
Field Crew: Vaughn
Last Site Visit Date: 9/23/2014

Rating: High
Protection Level : Not Designated
Resources of Concern Present? Unknown
Occupied? No
Local ID: [Local_ID]
In a Community? No
Lat(WGS84): 40° 23.5628' Long(WGS84): -105° 36.6921'

Primary Access: Road
Ingress/Egress: One roads in/out
Access Width: 1 lane (<18ft)
Access Condition: Other than all season
Bridge Condition: Flammable, load limit will limit response
Access & Turnarounds: Access is <300 ft from facility w/o turnaround
Facility Number/Sign: Marked and clearly visible
Defensible Space: <30 ft treated
Fuel Load (w/in 300 ft): Moderate
Fuel Type (w/in 300ft): Shrub or timber
Topography (w/in 300ft): Slope 5% to 20%
Roof Material: Combustible or no roof
Siding Material: Wood or open sided
Foundation: Closed, < 6in masonry exposed
Fences/Decks: None or noncombustible
Firewood: Adjacent to/under deck of facility
Propane Tanks: None
Water Supply: No reliable water source nearby
Overhead Hazards: No overhead hazards
Safety Zones: Potential safety zone(s) in area
Additional Obstacles: None
Triage Category:
Hazmat:
Assessment Comments:



● Facility
■ NPS Boundary

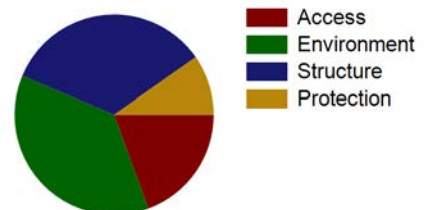
Score: 103
Rating: High



Asset Priority Index (API):
47



Factors Driving the Ratings





NPS Wildand Fire Risk Assessment - Facility Assessment

For more information visit <https://wildfire-risk-assessments-nifc.hub.arcgis.com>

Facility: B-0068-N Barn (Ashton) FY61 Little Horseshoe Park

Unit - Location: ROMO - Fall River Road
FMSS ID: 25481
Field Crew: Vaughn
Last Site Visit Date: 9/23/2014

Rating: High
Protection Level : Not Designated
Local ID: [Local_ID]
Lat(WGS84): 40° 23.5628' Long(WGS84): -105° 36.6921'

Recommended Treatments

Zone	Treatment Description	Pers Hours	Treatment Cycle	Treatment Priority	Treatment Status	Date Next Treatment Recommended	Equipment Description	Equip Qty
1	Mow dead/dying grass to less than 4 inches -	1	2 Month		Unknown	9/23/2014	-	
	Firewood should be moved at least 50 ft from the facility and 15 horizontal feet from tree canopies -	2			Unknown	9/23/2014	-	
2	Remove dead or dying component of shrubs and trees - Burn 2 piles of debris near structure.	6	5 Year		Unknown	9/23/2014	-	



NPS Wildand Fire Risk Assessment - Facility Assessment

For more information visit <https://wildfire-risk-assessments-nifc.hub.arcgis.com>

Facility: B-0068-N Barn (Ashton) FY61 Little Horseshoe Park

Unit - Location: ROMO - Fall River Road

FMSS ID: 25481

Field Crew: Vaughn

Last Site Visit Date: 9/23/2014

Rating: High

Protection Level : Not Designated

Local ID: [Local_ID]

Lat(WGS84): 40° 23.5628' Long(WGS84): -105° 36.6921'

Recommended Tactics

Triage Category	Tactic Description	Pers Hours	Equipment Description	Equip Qty
	Handline and burnout -	4.00	-	
	Structure wrap -	12.00	-	



NPS Wildand Fire Risk Assessment - Facility Assessment

For more information visit <https://wildfire-risk-assessments-nifc.hub.arcgis.com>

Facility: B-0068-N Barn (Ashton) FY61 Little Horseshoe Park

Unit - Location: ROMO - Fall River Road
FMSS ID: 25481
Field Crew: Vaughn
Last Site Visit Date: 9/23/2014

Rating: High
Protection Level : Not Designated
Local ID: [Local_ID]
Lat(WGS84): 40° 23.5628' Long(WGS84): -105° 36.6921'



ROMO_25481_B-0068-N Barn (Ashton) FY61 Little Horseshoe Park_Front.jpg



ROMO_25481_B-0068-N Barn (Ashton) FY61 Little Horseshoe Park_D.jpg



ROMO_25481_B-0068-N Barn (Ashton) FY61 Little Horseshoe Park_C.jpg



ROMO_25481_B-0068-N Barn (Ashton) FY61 Little Horseshoe Park_B.jpg



ROMO_25481_B-0068-N Barn (Ashton) FY61 Little Horseshoe Park_A.jpg



NPS Wildand Fire Risk Assessment - Facility Assessment

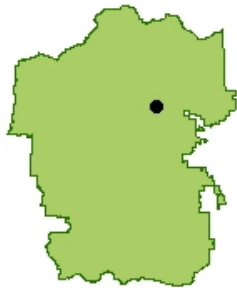
For more information visit <https://wildfire-risk-assessments-nifc.hub.arcgis.com>

Facility: B-1062-N Vault Toilet - West Alluvial Fan

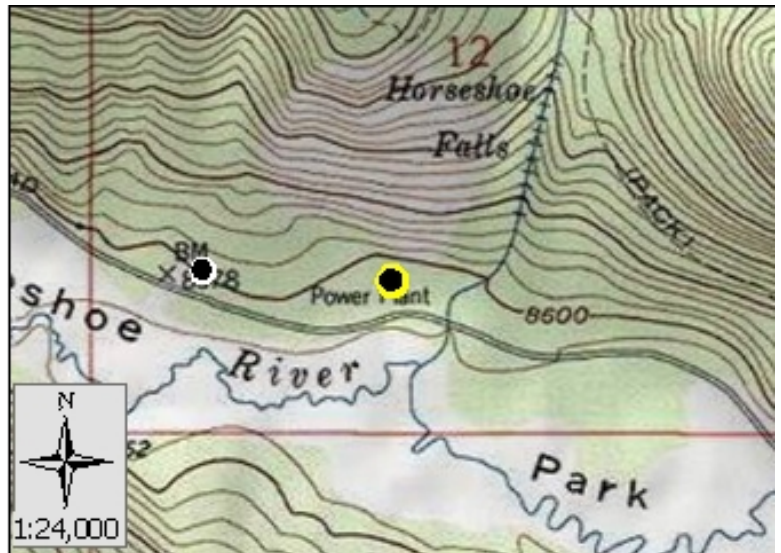
Unit - Location: ROMO - Fall River Road
FMSS ID: 24102
Structure Type: Toilet
Structure Use: Public
Owner: NPS
Field Crew: Dave Frey
Last Site Visit Date: 1/27/2014

Rating: High
Protection Level : Not Designated
Resources of Concern Present? Unknown
Occupied? No
Local ID: [Local_ID]
In a Community? No
Lat(WGS84): 40° 24.6577' Long(WGS84): -105° 38.2463'

Primary Access: Road
Ingress/Egress: One roads in/out
Access Width: 1.5 lanes (>18ft)
Access Condition: Surfaced-paved, grade<5%
Bridge Condition: None/nonflammable,load limit will not limit response
Access & Turnarounds: Access is <300 ft from facility w/turnaround
Facility Number/Sign: Marked and clearly visible
Defensible Space: 30 ft treated
Fuel Load (w/in 300 ft): Moderate
Fuel Type (w/in 300ft): Shrub or timber
Topography (w/in 300ft): Slope >40%
Roof Material: Combination of fire resitant and combustible
Siding Material: Wood or open sided
Foundation: Closed, >30in masonry exposed or N/A
Fences/Decks: None or noncombustible
Firewood: None
Propane Tanks: None
Water Supply: Reliable water source nearby
Overhead Hazards: No overhead hazards
Safety Zones: Potential safety zone(s) in area
Additional Obstacles: None
Triage Category:
Hazmat:
Assessment Comments:



● Facility
■ NPS Boundary



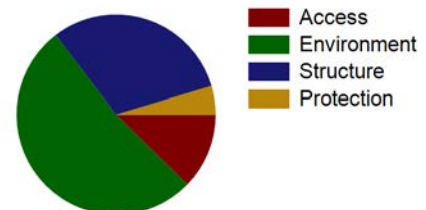
Score: 65
Rating: High



Asset Priority Index (API):
67



Factors Driving the Ratings





NPS Wildand Fire Risk Assessment - Facility Assessment

For more information visit <https://wildfire-risk-assessments-nifc.hub.arcgis.com>

Facility: B-1127 Picnic Shelter, Hidden Val Picnic

Unit - Location: ROMO - Fall River Road

FMSS ID: 82278

Structure Type: Building

Structure Use: Public

Owner: NPS

Field Crew: Dave Frey

Last Site Visit Date: 1/16/2014

Rating: High

Protection Level : Full

Resources of Concern Present? Unknown

Occupied? No

Local ID: [Local_ID]

In a Community? No

Lat(WGS84): 40° 23.6045' Long(WGS84): -105° 39.3109'

Primary Access: Road

Ingress/Egress: One roads in/out

Access Width: 2 lanes (>24ft)

Access Condition: Surfaced-paved, grade>5%

Bridge Condition: None/nonflammable,load limit will not limit response

Access & Turnarounds: Access is <300 ft from facility w/turnaround

Facility Number/Sign: Marked and clearly visible

Defensible Space: 30 ft treated

Fuel Load (w/in 300 ft): Heavy

Fuel Type (w/in 300ft): Shrub or timber

Topography (w/in 300ft): Slope >40%

Roof Material: Combination of fire resistant and combustible

Siding Material: Not applicable

Foundation: Closed, >30in masonry exposed or N/A

Fences/Decks: None or noncombustible

Firewood: None

Propane Tanks: None

Water Supply: Pressurized hydrant(s) or fixed sprinkler system

Overhead Hazards: No overhead hazards

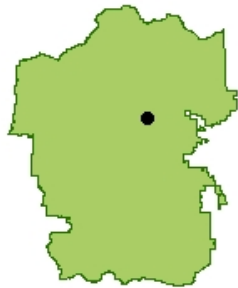
Safety Zones: Potential safety zone(s) in area

Additional Obstacles: None

Triage Category:

Hazmat:

Assessment Comments:



● Facility
■ NPS Boundary



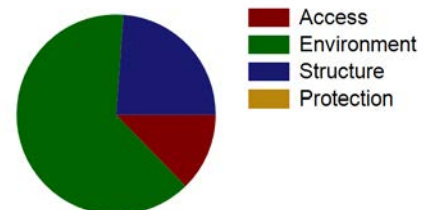
Score: 63
Rating: High



Asset Priority Index (API):
64



Factors Driving the Ratings





NPS Wildand Fire Risk Assessment - Facility Assessment

For more information visit <https://wildfire-risk-assessments-nifc.hub.arcgis.com>

Facility: B-1127 Picnic Shelter, Hidden Val Picnic

Unit - Location: ROMO - Fall River Road

FMSS ID: 82278

Field Crew: Dave Frey

Last Site Visit Date: 1/16/2014

Rating: High

Protection Level : Full

Local ID: [Local_ID]

Lat(WGS84): 40° 23.6045' Long(WGS84): -105° 39.3109'

Recommended Tactics

Triage Category	Tactic Description	Pers Hours	Equipment Description	Equip Qty
	Fuels reduction - A large wildfire making a major run through this area would make this building nondefensible	0.00	-	



NPS Wildand Fire Risk Assessment - Facility Assessment

For more information visit <https://wildfire-risk-assessments-nifc.hub.arcgis.com>

Facility: B-1127 Picnic Shelter, Hidden Val Picnic

Unit - Location: ROMO - Fall River Road
FMSS ID: 82278
Field Crew: Dave Frey
Last Site Visit Date: 1/16/2014

Rating: High
Protection Level : Full
Local ID: [Local_ID]
Lat(WGS84): 40° 23.6045' Long(WGS84): -105° 39.3109'



ROMO_82278_B-1127 Picnic Shelter, Hidden Val Picnic_D.jpg



ROMO_82278_B-1127 Picnic Shelter, Hidden Val Picnic_C.jpg



ROMO_82278_B-1127 Picnic Shelter, Hidden Val Picnic_B.jpg



ROMO_82278_B-1127 Picnic Shelter, Hidden Val Picnic_A.jpg



NPS Wildand Fire Risk Assessment - Facility Assessment

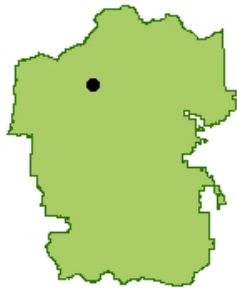
For more information visit <https://wildfire-risk-assessments-nifc.hub.arcgis.com>

Facility: B-0170-N Trail Ridge Store

Unit - Location: ROMO - Fall River Road
FMSS ID: 25447
Structure Type: Building
Structure Use: Public
Owner: NPS
Field Crew: Dave Frey
Last Site Visit Date: 1/27/2014

Rating: Moderate
Protection Level : Not Designated
Resources of Concern Present? Unknown
Occupied? Yes
Local ID: [Local_ID]
In a Community? Yes - Fall River Pass
Lat(WGS84): 40° 26.483' Long(WGS84): -105° 45.2195'

Primary Access: Road
Ingress/Egress: Two or more roads in/out
Access Width: 2 lanes (>24ft)
Access Condition: Surfaced-paved, grade>5%
Bridge Condition: None/nonflammable,load limit will not limit response
Access & Turnarounds: Access is <300 ft from facility w/turnaround
Facility Number/Sign: Marked and clearly visible
Defensible Space: >100ft treated
Fuel Load (w/in 300 ft): Light
Fuel Type (w/in 300ft): Grass,tundra,northern hardwood litter
Topography (w/in 300ft): Slope >40%
Roof Material: Combustible or no roof
Siding Material: Rock, concrete, metal
Foundation: Closed, >30in masonry exposed or N/A
Fences/Decks: None or noncombustible
Firewood: None
Propane Tanks:
Water Supply: Reliable water source nearby
Overhead Hazards: No overhead hazards
Safety Zones: Potential safety zone(s) in area
Additional Obstacles: None
Triage Category:
Hazmat:
Assessment Comments:



● Facility
■ NPS Boundary



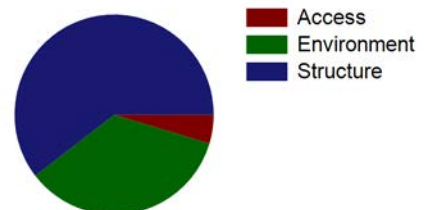
Score: 51
Rating: Moderate



Asset Priority Index (API):
65



Factors Driving the Ratings





NPS Wildand Fire Risk Assessment - Facility Assessment

For more information visit <https://wildfire-risk-assessments-nifc.hub.arcgis.com>

Facility: B-1063-N Vault Toilet Rock Cut South

Unit - Location: ROMO - Fall River Road
FMSS ID: 25477
Structure Type: Building
Structure Use: Public
Owner: NPS
Field Crew: Dave Frey
Last Site Visit Date: 1/27/2014

Rating: Low
Protection Level : Not Designated
Resources of Concern Present? Unknown
Occupied? No
Local ID: [Local_ID]
In a Community? No
Lat(WGS84): 40° 24.712' **Long(WGS84):** -105° 43.9578'

Primary Access: Road
Ingress/Egress: Two or more roads in/out
Access Width: 2 lanes (>24ft)
Access Condition: Surfaced-paved, grade>5%
Bridge Condition: None/nonflammable,load limit will not limit response
Access & Turnarounds: Access is <300 ft from facility w/turnaround
Facility Number/Sign: Marked and clearly visible
Defensible Space: >100ft treated
Fuel Load (w/in 300 ft): Light
Fuel Type (w/in 300ft): Grass,tundra,northern hardwood litter
Topography (w/in 300ft): Slope >40%
Roof Material: Noncombustible or not applicable
Siding Material: Rock, concrete, metal
Foundation: Closed, >30in masonry exposed or N/A
Fences/Decks: Combustible but separated from facility
Firewood: None
Propane Tanks: None
Water Supply: No reliable water source nearby
Overhead Hazards: No overhead hazards
Safety Zones: Potential safety zone(s) in area
Additional Obstacles: None
Triage Category:
Hazmat: Human waste
Assessment Comments:



● Facility
■ NPS Boundary



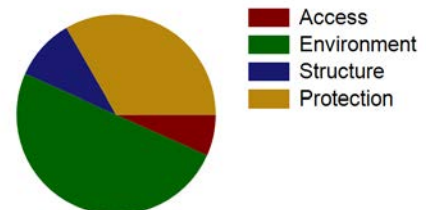
Score: 30
Rating: Low



Asset Priority Index (API):
60



Factors Driving the Ratings





NPS Wildand Fire Risk Assessment - Facility Assessment

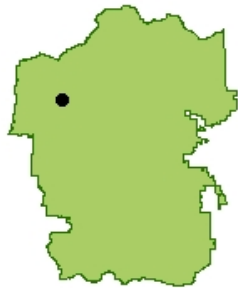
For more information visit <https://wildfire-risk-assessments-nifc.hub.arcgis.com>

Facility: B-1043-N Vault Toilet (SST) Milner Pass

Unit - Location: ROMO - Fall River Road
FMSS ID: 14859
Structure Type: Toilet
Structure Use: Public
Owner: NPS
Field Crew: Dave Frey
Last Site Visit Date: 1/27/2014

Rating: Moderate
Protection Level : Not Designated
Resources of Concern Present? Unknown
Occupied? No
Local ID: [Local_ID]
In a Community? No
Lat(WGS84): 40° 25.1962' **Long(WGS84):** -105° 48.711'

Primary Access: Road
Ingress/Egress: Two or more roads in/out
Access Width: 2 lanes (>24ft)
Access Condition: Surfaced-paved, grade>5%
Bridge Condition: None/nonflammable,load limit will not limit response
Access & Turnarounds: Access is <300 ft from facility w/turnaround
Facility Number/Sign: Marked and clearly visible
Defensible Space: 100 ft treated
Fuel Load (w/in 300 ft): Moderate
Fuel Type (w/in 300ft): Shrub or timber
Topography (w/in 300ft): Slope 31% to 40%
Roof Material: Combination of fire resitant and combustible
Siding Material: Wood or open sided
Foundation: Closed, >30in masonry exposed or N/A
Fences/Decks: Combustible but separated from facility
Firewood: None
Propane Tanks: None
Water Supply: Reliable water source nearby
Overhead Hazards: No overhead hazards
Safety Zones: Potential safety zone(s) in area
Additional Obstacles: None
Triage Category:
Hazmat:
Assessment Comments:



● Facility
■ NPS Boundary



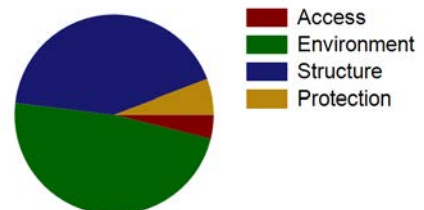
Score: 52
Rating: Moderate



Asset Priority Index (API):
67



Factors Driving the Ratings





NPS Wildand Fire Risk Assessment - Facility Assessment

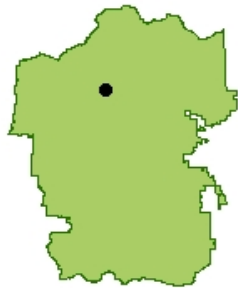
For more information visit <https://wildfire-risk-assessments-nifc.hub.arcgis.com>

Facility: B-1089-N Vault Toilet, Willow Park

Unit - Location: ROMO - Fall River Road
FMSS ID: 64552
Structure Type: Building
Structure Use: Public
Owner: NPS
Field Crew:
Last Site Visit Date:

Rating: Not Surveyed
Protection Level : Not Designated
Resources of Concern Present? Unknown
Occupied?
Local ID: [Local_ID]
In a Community? No
Lat(WGS84): 40° 25.9749' Long(WGS84): -105° 44.0232'

Primary Access: Road
Ingress/Egress:
Access Width:
Access Condition:
Bridge Condition:
Access & Turnarounds:
Facility Number/Sign:
Defensible Space:
Fuel Load (w/in 300 ft):
Fuel Type (w/in 300ft):
Topography (w/in 300ft):
Roof Material: Combustible or no roof
Siding Material: Wood or open sided
Foundation:
Fences/Decks:
Firewood:
Propane Tanks:
Water Supply:
Overhead Hazards:
Safety Zones:
Additional Obstacles:
Triage Category:
Hazmat:
Assessment Comments:



● Facility
■ NPS Boundary



Score:
Rating: Not Surveyed



Asset Priority Index (API):
67



Factors Driving the Ratings



NPS Wildand Fire Risk Assessment - Facility Assessment

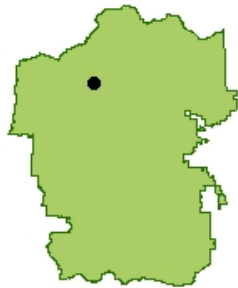
For more information visit <https://wildfire-risk-assessments-nifc.hub.arcgis.com>

Facility: B-0171-N Pumphouse, Fall River Pass

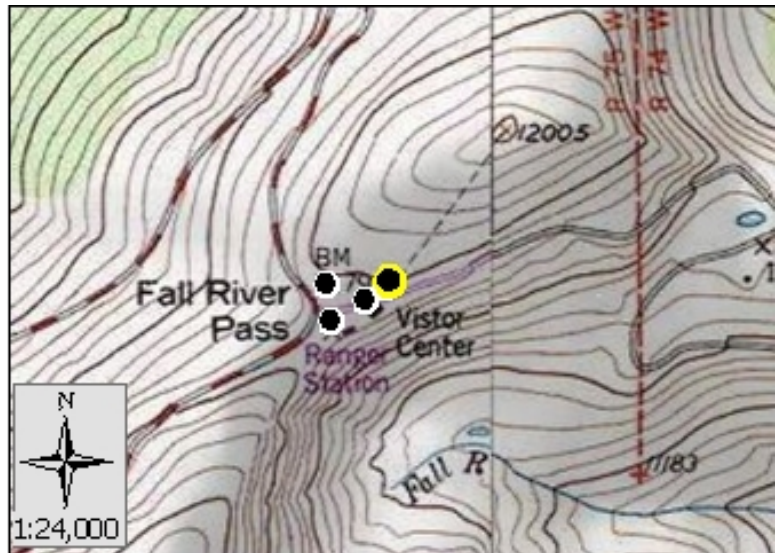
Unit - Location: ROMO - Fall River Road
FMSS ID: 98018
Structure Type: Building
Structure Use: Admin
Owner: NPS
Field Crew: Dave Frey
Last Site Visit Date: 1/27/2014

Rating: Low
Protection Level : Not Designated
Resources of Concern Present? Unknown
Occupied? No
Local ID: [Local_ID]
In a Community? Yes - Fall River Pass
Lat(WGS84): 40° 26.505' Long(WGS84): -105° 45.1806'

Primary Access: Road
Ingress/Egress: Two or more roads in/out
Access Width: 2 lanes (>24ft)
Access Condition: Surfaced-paved, grade>5%
Bridge Condition: None/nonflammable,load limit will not limit response
Access & Turnarounds: Access is <300 ft from facility w/turnaround
Facility Number/Sign: Marked and clearly visible
Defensible Space: >100ft treated
Fuel Load (w/in 300 ft): Light
Fuel Type (w/in 300ft): Grass,tundra,northern hardwood litter
Topography (w/in 300ft): Slope >40%
Roof Material: Noncombustible or not applicable
Siding Material: Rock, concrete, metal
Foundation: Closed, >30in masonry exposed or N/A
Fences/Decks: None or noncombustible
Firewood: None
Propane Tanks:
Water Supply: Reliable water source nearby
Overhead Hazards: No overhead hazards
Safety Zones: Potential safety zone(s) in area
Additional Obstacles: None
Triage Category:
Hazmat:
Assessment Comments:



● Facility
■ NPS Boundary



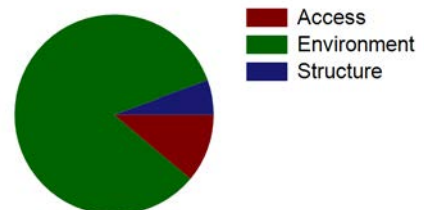
Score: 26
Rating: Low



Asset Priority Index (API):
100



Factors Driving the Ratings





NPS Wildand Fire Risk Assessment - Facility Assessment

For more information visit <https://wildfire-risk-assessments-nifc.hub.arcgis.com>

Facility: B-1067-N Vault Toilet, Rainbow Curve

Unit - Location: ROMO - Fall River Road
FMSS ID: 37232
Structure Type: Building
Structure Use: Public
Owner: NPS
Field Crew: Dave Frey
Last Site Visit Date: 1/27/2014

Rating: Moderate
Protection Level : Non-Sensitive
Resources of Concern Present? Unknown
Occupied? No
Local ID: [Local_ID]
In a Community? No
Lat(WGS84): 40° 24.0104' **Long(WGS84):** -105° 39.8378'

Primary Access: Road
Ingress/Egress: Two or more roads in/out
Access Width: 2 lanes (>24ft)
Access Condition: Surfaced-paved, grade>5%
Bridge Condition: None/nonflammable,load limit will not limit response
Access & Turnarounds: Access is <300 ft from facility w/turnaround
Facility Number/Sign: Marked and clearly visible
Defensible Space: 100 ft treated
Fuel Load (w/in 300 ft): Light
Fuel Type (w/in 300ft): Shrub or timber
Topography (w/in 300ft): Slope >40%
Roof Material: Noncombustible or not applicable
Siding Material: Rock, concrete, metal
Foundation: Closed, >30in masonry exposed or N/A
Fences/Decks: None or noncombustible
Firewood: None
Propane Tanks: None
Water Supply: No reliable water source nearby
Overhead Hazards: No overhead hazards
Safety Zones: Potential safety zone(s) in area
Additional Obstacles: None
Triage Category:
Hazmat: Human waste
Assessment Comments:



● Facility
■ NPS Boundary



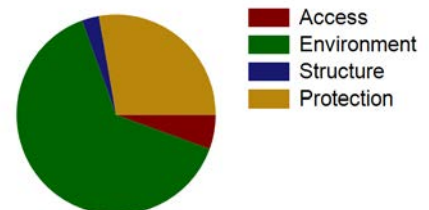
Score: 47
Rating: Moderate



Asset Priority Index (API):
70



Factors Driving the Ratings





NPS Wildand Fire Risk Assessment - Facility Assessment

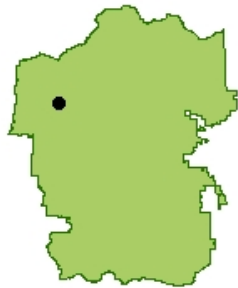
For more information visit <https://wildfire-risk-assessments-nifc.hub.arcgis.com>

Facility: B-0220-H Cabin (Milner Pass Road Camp mess hall)

Unit - Location: ROMO - Fall River Road
FMSS ID: 14850
Structure Type: Building
Structure Use: Public
Owner: NPS
Field Crew:
Last Site Visit Date:

Rating: Not Surveyed
Protection Level : Not Designated
Resources of Concern Present? Unknown
Occupied?
Local ID: [Local_ID]
In a Community? No
Lat(WGS84): 40° 24.8385' Long(WGS84): -105° 49.1556'

Primary Access: Road
Ingress/Egress:
Access Width:
Access Condition:
Bridge Condition:
Access & Turnarounds:
Facility Number/Sign:
Defensible Space:
Fuel Load (w/in 300 ft):
Fuel Type (w/in 300ft):
Topography (w/in 300ft):
Roof Material: Combustible or no roof
Siding Material: Log
Foundation:
Fences/Decks:
Firewood:
Propane Tanks:
Water Supply:
Overhead Hazards:
Safety Zones:
Additional Obstacles:
Triage Category:
Hazmat:
Assessment Comments:



● Facility
■ NPS Boundary



Score:
Rating: Not Surveyed



Asset Priority Index (API):
41



Factors Driving the Ratings



NPS Wildand Fire Risk Assessment - Facility Assessment

For more information visit <https://wildfire-risk-assessments-nifc.hub.arcgis.com>

Facility: B-0543-N Alpine Visitor Center & Apartments

Unit - Location: ROMO - Fall River Road
FMSS ID: 25455
Structure Type: Building
Structure Use: Public
Owner: NPS
Field Crew: Dave Frey
Last Site Visit Date: 1/27/2014

Rating: Moderate
Protection Level : Not Designated
Resources of Concern Present? Unknown
Occupied? Yes
Local ID: [Local_ID]
In a Community? Yes - Fall River Pass
Lat(WGS84): 40° 26.4619' **Long(WGS84):** -105° 45.2712'

Primary Access: Road
Ingress/Egress: Two or more roads in/out
Access Width: 2 lanes (>24ft)
Access Condition: Surfaced-paved, grade>5%
Bridge Condition: None/nonflammable,load limit will not limit response
Access & Turnarounds: Access is <300 ft from facility w/turnaround
Facility Number/Sign: Marked and clearly visible
Defensible Space: >100ft treated
Fuel Load (w/in 300 ft): Light
Fuel Type (w/in 300ft): Grass,tundra,northern hardwood litter
Topography (w/in 300ft): Slope >40%
Roof Material: Combustible or no roof
Siding Material: Rock, concrete, metal
Foundation: Closed, >30in masonry exposed or N/A
Fences/Decks: Combustible but separated from facility
Firewood: None
Propane Tanks:
Water Supply: Reliable water source nearby
Overhead Hazards: No overhead hazards
Safety Zones: Potential safety zone(s) in area
Additional Obstacles: None
Triage Category:
Hazmat:
Assessment Comments:



● Facility
■ NPS Boundary



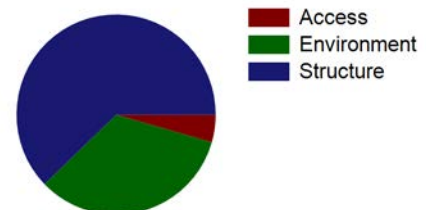
Score: 53
Rating: Moderate



Asset Priority Index (API):
65



Factors Driving the Ratings





NPS Wildand Fire Risk Assessment - Facility Assessment

For more information visit <https://wildfire-risk-assessments-nifc.hub.arcgis.com>

Facility: B-1031-N Vault Toilet, Lawn Lake Trailhead

Unit - Location: ROMO - Fall River Road
FMSS ID: 37220
Structure Type: Building
Structure Use: Public
Owner: NPS
Field Crew: Dave Frey
Last Site Visit Date: 1/15/2014

Rating: Moderate
Protection Level : Not Designated
Resources of Concern Present? Unknown
Occupied? No
Local ID: [Local_ID]
In a Community? No
Lat(WGS84): 40° 24.4341' **Long(WGS84):** -105° 37.5619'

Primary Access: Road
Ingress/Egress: One roads in/out
Access Width: 1.5 lanes (>18ft)
Access Condition: Surfaced-paved, grade>5%
Bridge Condition: None/nonflammable,load limit will not limit response
Access & Turnarounds: Access is <300 ft from facility w/turnaround
Facility Number/Sign: Marked and clearly visible
Defensible Space: 30 ft treated
Fuel Load (w/in 300 ft): Moderate
Fuel Type (w/in 300ft): Shrub or timber
Topography (w/in 300ft): Slope >40%
Roof Material: Noncombustible or not applicable
Siding Material: Wood or open sided
Foundation: Closed, >30in masonry exposed or N/A
Fences/Decks: None or noncombustible
Firewood: None
Propane Tanks: None
Water Supply: No reliable water source nearby
Overhead Hazards: No overhead hazards
Safety Zones: Potential safety zone(s) in area
Additional Obstacles: None
Triage Category:
Hazmat: Human waste
Assessment Comments:



● Facility
■ NPS Boundary



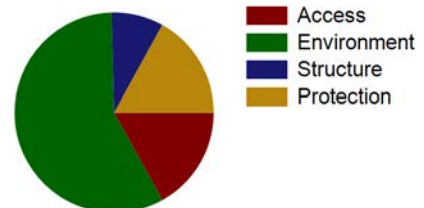
Score: 59
Rating: Moderate



Asset Priority Index (API):
67



Factors Driving the Ratings





NPS Wildand Fire Risk Assessment - Facility Assessment

For more information visit <https://wildfire-risk-assessments-nifc.hub.arcgis.com>

Facility: B-0985-N Generator Shed Little Horseshoe Park

Unit - Location: ROMO - Fall River Road

FMSS ID: 25490

Structure Type: Utility

Structure Use: Admin

Owner: NPS

Field Crew: Vaughn

Last Site Visit Date: 9/23/2014

Rating: High

Protection Level : Not Designated

Resources of Concern Present? Unknown

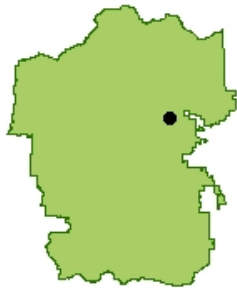
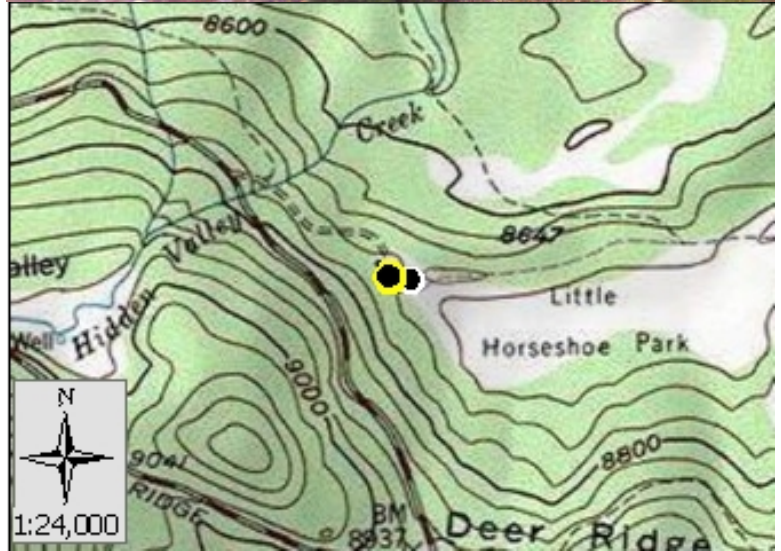
Occupied? No

Local ID: [Local_ID]

In a Community? No

Lat(WGS84): 40° 23.5659' Long(WGS84): -105° 36.7199'

Primary Access: Road
Ingress/Egress: One roads in/out
Access Width: 1 lane (<18ft)
Access Condition: Other than all season
Bridge Condition: Flammable, load limit will limit response
Access & Turnarounds: Access is <300 ft from facility w/o turnaround
Facility Number/Sign: None or not clearly visible
Defensible Space: No defensible space
Fuel Load (w/in 300 ft): Light
Fuel Type (w/in 300ft): Shrub or timber
Topography (w/in 300ft): Slope 5% to 20%
Roof Material: Noncombustible or not applicable
Siding Material: Not applicable
Foundation: Closed, >30in masonry exposed or N/A
Fences/Decks: None or noncombustible
Firewood: None
Propane Tanks: None
Water Supply: No reliable water source nearby
Overhead Hazards: No overhead hazards
Safety Zones: Potential safety zone(s) in area
Additional Obstacles: None
Triage Category:
Hazmat:
Assessment Comments:



● Facility
■ NPS Boundary

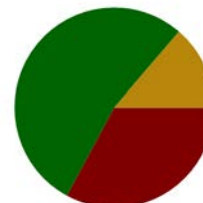
Score: 73
Rating: High



Asset Priority Index (API):
0



Factors Driving the Ratings



■ Access
■ Environment
■ Structure
■ Protection



NPS Wildand Fire Risk Assessment - Facility Assessment

For more information visit <https://wildfire-risk-assessments-nifc.hub.arcgis.com>

Facility: B-0985-N Generator Shed Little Horseshoe Park

Unit - Location: ROMO - Fall River Road
FMSS ID: 25490
Field Crew: Vaughn
Last Site Visit Date: 9/23/2014

Rating: High
Protection Level : Not Designated
Local ID: [Local_ID]
Lat(WGS84): 40° 23.5659' Long(WGS84): -105° 36.7199'

Recommended Treatments

Zone	Treatment Description	Pers Hours	Treatment Cycle	Treatment Priority	Treatment Status	Date Next Treatment Recommended	Equipment Description	Equip Qty
1	Mow dead/dying grass to less than 4 inches -	1	2 Month		Unknown	9/23/2014	-	
	Clear adjacent and overhanging fuels to create 10 feet spacing between canopy and structure or chimney openings -	1	3 Year		Unknown	9/23/2014	-	



NPS Wildand Fire Risk Assessment - Facility Assessment

For more information visit <https://wildfire-risk-assessments-nifc.hub.arcgis.com>

Facility: B-0985-N Generator Shed Little Horseshoe Park

Unit - Location: ROMO - Fall River Road

FMSS ID: 25490

Field Crew: Vaughn

Last Site Visit Date: 9/23/2014

Rating: High

Protection Level : Not Designated

Local ID: [Local_ID]

Lat(WGS84): 40° 23.5659' Long(WGS84): -105° 36.7199'

Recommended Tactics

Triage Category	Tactic Description	Pers Hours	Equipment Description	Equip Qty
	Burnout, no line construction necessary -	1.00	-	
	Fuels reduction -	0.50	-	



NPS Wildand Fire Risk Assessment - Facility Assessment

For more information visit <https://wildfire-risk-assessments-nifc.hub.arcgis.com>

Facility: *B-0985-N Generator Shed Little Horseshoe Park*

Unit - Location: ROMO - Fall River Road
FMSS ID: 25490
Field Crew: Vaughn
Last Site Visit Date: 9/23/2014

Rating: High
Protection Level : Not Designated
Local ID: [Local_ID]
Lat(WGS84): 40° 23.5659' **Long(WGS84):** -105° 36.7199'



ROMO_25490_B-0985-N Generator Shed Little Horseshoe Park_Front2.jpg



ROMO_25490_B-0985-N Generator Shed Little Horseshoe Park_Front.jpg



NPS Wildand Fire Risk Assessment - Facility Assessment

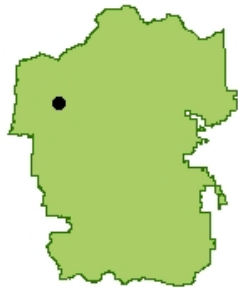
For more information visit <https://wildfire-risk-assessments-nifc.hub.arcgis.com>

Facility: 957? SNO-TEL DATA SITE

Unit - Location: ROMO - Fall River Road
FMSS ID:
Structure Type: Building
Structure Use: Unknown
Owner: NPS
Field Crew:
Last Site Visit Date:

Rating: Not Surveyed
Protection Level : Not Designated
Resources of Concern Present? Unknown
Occupied?
Local ID: [Local_ID]
In a Community? No
Lat(WGS84): 40° 24.8647' Long(WGS84): -105° 49.1617'

Primary Access: Road
Ingress/Egress:
Access Width:
Access Condition:
Bridge Condition:
Access & Turnarounds:
Facility Number/Sign:
Defensible Space:
Fuel Load (w/in 300 ft):
Fuel Type (w/in 300ft):
Topography (w/in 300ft):
Roof Material:
Siding Material:
Foundation:
Fences/Decks:
Firewood:
Propane Tanks:
Water Supply:
Overhead Hazards:
Safety Zones:
Additional Obstacles:
Triage Category:
Hazmat:
Assessment Comments:



● Facility
■ NPS Boundary



Score:
Rating: Not Surveyed



Asset Priority Index (API):
N/A



Factors Driving the Ratings



NPS Wildand Fire Risk Assessment - Facility Assessment

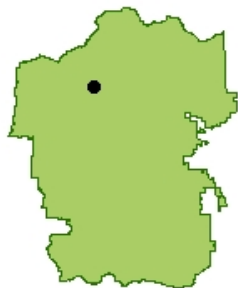
For more information visit <https://wildfire-risk-assessments-nifc.hub.arcgis.com>

Facility: B-0692-N Generator House

Unit - Location: ROMO - Fall River Road
FMSS ID: 25467
Structure Type: Building
Structure Use: Admin
Owner: NPS
Field Crew: Dave Frey
Last Site Visit Date: 1/27/2014

Rating: Low
Protection Level : Not Designated
Resources of Concern Present? Unknown
Occupied? No
Local ID: [Local_ID]
In a Community? Yes - Fall River Pass
Lat(WGS84): 40° 26.5006' **Long(WGS84):** -105° 45.1897'

Primary Access: Road
Ingress/Egress: Two or more roads in/out
Access Width: 2 lanes (>24ft)
Access Condition: Surfaced-paved, grade>5%
Bridge Condition: None/nonflammable,load limit will not limit response
Access & Turnarounds: Access is <300 ft from facility w/turnaround
Facility Number/Sign: Marked and clearly visible
Defensible Space: >100ft treated
Fuel Load (w/in 300 ft): Light
Fuel Type (w/in 300ft): Grass,tundra,northern hardwood litter
Topography (w/in 300ft): Slope >40%
Roof Material: Noncombustible or not applicable
Siding Material: Rock, concrete, metal
Foundation: Closed, >30in masonry exposed or N/A
Fences/Decks: None or noncombustible
Firewood: None
Propane Tanks:
Water Supply: Reliable water source nearby
Overhead Hazards: No overhead hazards
Safety Zones: Potential safety zone(s) in area
Additional Obstacles: None
Triage Category:
Hazmat:
Assessment Comments:



● Facility
■ NPS Boundary



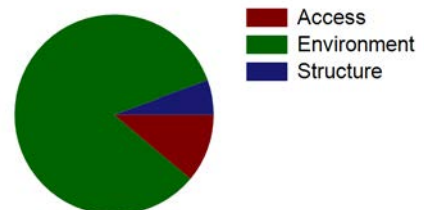
Score: 26
Rating: Low



Asset Priority Index (API):
65



Factors Driving the Ratings





NPS Wildand Fire Risk Assessment - Facility Assessment

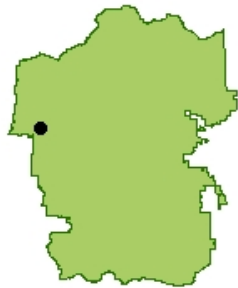
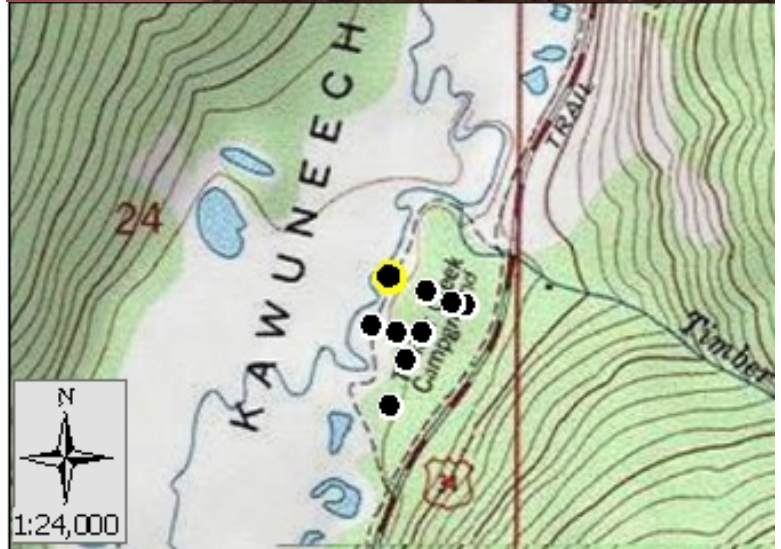
For more information visit <https://wildfire-risk-assessments-nifc.hub.arcgis.com>

Facility: B-0826-N Amphitheater - stage & screen TCCG

Unit - Location: ROMO - Fall River Road
FMSS ID: 14828
Structure Type: Building
Structure Use: Public
Owner: NPS
Field Crew: Vaughn
Last Site Visit Date: 10/1/2014

Rating: Moderate
Protection Level : Not Designated
Resources of Concern Present? Unknown
Occupied? No
Local ID: [Local_ID]
In a Community? Yes - Timber Creek Campground
Lat(WGS84): 40° 22.8059' Long(WGS84): -105° 51.1575'

Primary Access: Road
Ingress/Egress: Two or more roads in/out
Access Width: 2 lanes (>24ft)
Access Condition: Surfaced-paved, grade<5%
Bridge Condition: None/nonflammable,load limit will not limit response
Access & Turnarounds: Access is <300 ft from facility w/turnaround
Facility Number/Sign: Marked and clearly visible
Defensible Space: <30 ft treated
Fuel Load (w/in 300 ft): Moderate
Fuel Type (w/in 300ft): Shrub or timber
Topography (w/in 300ft): Slope 31% to 40%
Roof Material: Noncombustible or not applicable
Siding Material: Wood or open sided
Foundation: Closed, >30in masonry exposed or N/A
Fences/Decks: None or noncombustible
Firewood: None
Propane Tanks:
Water Supply: Limited or dependent on electricity
Overhead Hazards: No overhead hazards
Safety Zones: Potential safety zone(s) in area
Additional Obstacles: None
Triage Category:
Hazmat:
Assessment Comments:



● Facility
■ NPS Boundary

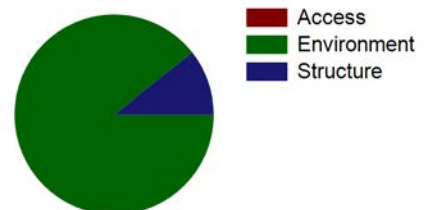
Score: 52
Rating: Moderate



Asset Priority Index (API):
N/A



Factors Driving the Ratings





NPS Wildand Fire Risk Assessment - Facility Assessment

For more information visit <https://wildfire-risk-assessments-nifc.hub.arcgis.com>

Facility: B-0826-N Amphitheater - stage & screen TCCG

Unit - Location: ROMO - Fall River Road
FMSS ID: 14828
Field Crew: Vaughn
Last Site Visit Date: 10/1/2014

Rating: Moderate
Protection Level : Not Designated
Local ID: [Local_ID]
Lat(WGS84): 40° 22.8059' Long(WGS84): -105° 51.1575'



ROMO_14828_B-0826-N Amphitheater - stage & screen TCCG_Front.jpg



ROMO_14828_B-0826-N Amphitheater - stage & screen TCCG_D.jpg



ROMO_14828_B-0826-N Amphitheater - stage & screen TCCG_C.jpg



ROMO_14828_B-0826-N Amphitheater - stage & screen TCCG_B.jpg



ROMO_14828_B-0826-N Amphitheater - stage & screen TCCG_A.jpg



NPS Wildand Fire Risk Assessment - Facility Assessment

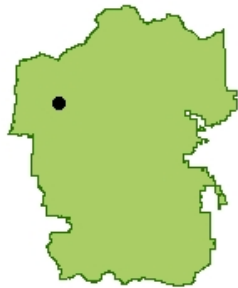
For more information visit <https://wildfire-risk-assessments-nifc.hub.arcgis.com>

Facility: B-1065-N Vault Toilet (SST) Lake Irene

Unit - Location: ROMO - Fall River Road
FMSS ID: 14853
Structure Type: Toilet
Structure Use: Public
Owner: NPS
Field Crew: Dave Frey
Last Site Visit Date: 1/27/2014

Rating: High
Protection Level : Not Designated
Resources of Concern Present? Unknown
Occupied? No
Local ID: [Local_ID]
In a Community? No
Lat(WGS84): 40° 24.8478' Long(WGS84): -105° 49.1329'

Primary Access: Road
Ingress/Egress: Two or more roads in/out
Access Width: 2 lanes (>24ft)
Access Condition: Surfaced-paved, grade>5%
Bridge Condition: None/nonflammable,load limit will not limit response
Access & Turnarounds: Access is <300 ft from facility w/turnaround
Facility Number/Sign: Marked and clearly visible
Defensible Space: <30 ft treated
Fuel Load (w/in 300 ft): Heavy
Fuel Type (w/in 300ft): Shrub or timber
Topography (w/in 300ft): Slope >40%
Roof Material: Combination of fire resitant and combustible
Siding Material: Wood or open sided
Foundation: Closed, >30in masonry exposed or N/A
Fences/Decks: None or noncombustible
Firewood: None
Propane Tanks: None
Water Supply: Reliable water source nearby
Overhead Hazards: No overhead hazards
Safety Zones: Potential safety zone(s) in area
Additional Obstacles: None
Triage Category:
Hazmat:
Assessment Comments:



● Facility
■ NPS Boundary



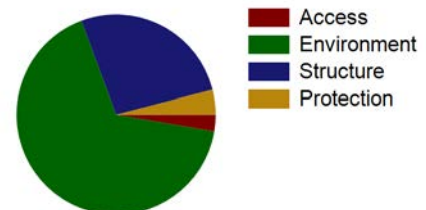
Score: 75
Rating: High



Asset Priority Index (API):
67



Factors Driving the Ratings





NPS Wildand Fire Risk Assessment - Facility Assessment

For more information visit <https://wildfire-risk-assessments-nifc.hub.arcgis.com>

Facility: Vault Toilet

Unit - Location: ROMO - Fall River Road

FMSS ID:

Structure Type: Toilet

Structure Use: Public

Owner: NPS

Field Crew: Dave Frey

Last Site Visit Date: 1/27/2014

Rating: Low

Protection Level : Not Designated

Resources of Concern Present? Unknown

Occupied? No

Local ID: [Local_ID]

In a Community? Yes

Lat(WGS84): 40° 26.5013' Long(WGS84): -105° 45.2789'

Primary Access: Road

Ingress/Egress: Two or more roads in/out

Access Width: 2 lanes (>24ft)

Access Condition: Surfaced-paved, grade>5%

Bridge Condition: None/nonflammable,load limit will not limit response

Access & Turnarounds: Access is <300 ft from facility w/turnaround

Facility Number/Sign: Marked and clearly visible

Defensible Space: >100ft treated

Fuel Load (w/in 300 ft): Light

Fuel Type (w/in 300ft): Grass,tundra,northern hardwood litter

Topography (w/in 300ft): Slope >40%

Roof Material: Noncombustible or not applicable

Siding Material: Wood or open sided

Foundation: Closed, >30in masonry exposed or N/A

Fences/Decks: Combustible but separated from facility

Firewood: None

Propane Tanks:

Water Supply: Reliable water source nearby

Overhead Hazards: No overhead hazards

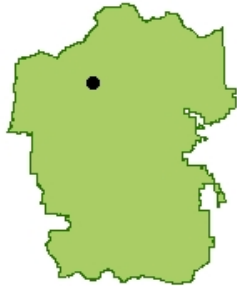
Safety Zones: Potential safety zone(s) in area

Additional Obstacles: None

Triage Category:

Hazmat: Human waste

Assessment Comments:



● Facility

■ NPS Boundary



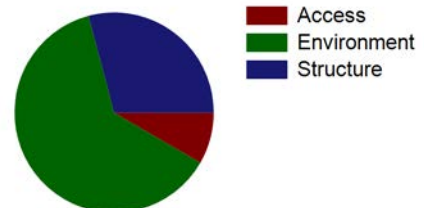
Score: 22
Rating: Low



Asset Priority Index (API):
N/A



Factors Driving the Ratings





NPS Wildand Fire Risk Assessment - Facility Assessment

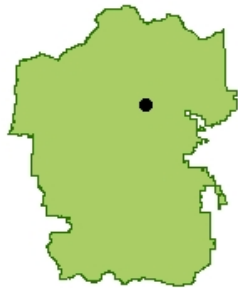
For more information visit <https://wildfire-risk-assessments-nifc.hub.arcgis.com>

Facility: B-1056-N Vault Toilet Endovalley South Picnic Area

Unit - Location: ROMO - Fall River Road
FMSS ID: 25431
Structure Type: Building
Structure Use: Public
Owner: NPS
Field Crew: L Nelson
Last Site Visit Date: 1/30/2013

Rating: Moderate
Protection Level : Not Designated
Resources of Concern Present? Unknown
Occupied?
Local ID: [Local_ID]
In a Community?
Lat(WGS84): 40° 24.7964' **Long(WGS84):** -105° 39.4972'

Primary Access: Road
Ingress/Egress: One roads in/out
Access Width: 1.5 lanes (>18ft)
Access Condition: Surfaced-paved, grade<5%
Bridge Condition: None/nonflammable,load limit will not limit response
Access & Turnarounds: Access is <300 ft from facility w/turnaround
Facility Number/Sign: Marked and clearly visible
Defensible Space: <30 ft treated
Fuel Load (w/in 300 ft): Moderate
Fuel Type (w/in 300ft): Shrub or timber
Topography (w/in 300ft): Slope 5% to 20%
Roof Material: Noncombustible or not applicable
Siding Material: Wood or open sided
Foundation: Closed, >30in masonry exposed or N/A
Fences/Decks: None or noncombustible
Firewood: None
Propane Tanks: None
Water Supply: No reliable water source nearby
Overhead Hazards: No overhead hazards
Safety Zones: No safety zone(s) in area
Additional Obstacles: None
Triage Category:
Hazmat:
Assessment Comments:



● Facility
■ NPS Boundary



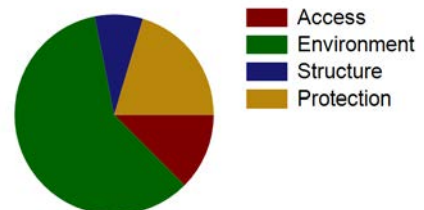
Score: 62
Rating: Moderate



Asset Priority Index (API):
67



Factors Driving the Ratings





NPS Wildand Fire Risk Assessment - Facility Assessment

For more information visit <https://wildfire-risk-assessments-nifc.hub.arcgis.com>

Facility: B-1056-N Vault Toilet Endovalley South Picnic Area

Unit - Location: ROMO - Fall River Road
FMSS ID: 25431
Field Crew: L Nelson
Last Site Visit Date: 1/30/2013

Rating: Moderate
Protection Level : Not Designated
Local ID: [Local_ID]
Lat(WGS84): 40° 24.7964' Long(WGS84): -105° 39.4972'

Recommended Treatments

Zone	Treatment Description	Pers Hours	Treatment Cycle	Treatment Priority	Treatment Status	Date Next Treatment Recommended	Equipment Description	Equip Qty
1	Open crown spacing 10 to 30 feet depending on slope -	3		Unknown	Planned		-	
	Clear adjacent and overhanging fuels to create 10 feet spacing between canopy and structure or chimney openings -	3		Unknown	Planned		-	
	Limb trees 6 to 15 feet above ground -	3		Unknown	Planned		-	
2	Open crown spacing 10 to 30 feet depending on slope -	6		Unknown	Planned		-	
	Limb trees 6 to 15 feet above ground -	3		Unknown	Planned		-	



NPS Wildand Fire Risk Assessment - Facility Assessment

For more information visit <https://wildfire-risk-assessments-nifc.hub.arcgis.com>

Facility: B-1056-N Vault Toilet Endovalley South Picnic Area

Unit - Location: ROMO - Fall River Road

FMSS ID: 25431

Field Crew: L Nelson

Last Site Visit Date: 1/30/2013

Rating: Moderate

Protection Level : Not Designated

Local ID: [Local_ID]

Lat(WGS84): 40° 24.7964' Long(WGS84): -105° 39.4972'

Recommended Tactics

Triage Category	Tactic Description	Pers Hours	Equipment Description	Equip Qty
	Engine on scene -	3.00	-	
	Fuels reduction -	3.00	-	
	Handline -	3.00	-	



NPS Wildand Fire Risk Assessment - Facility Assessment

For more information visit <https://wildfire-risk-assessments-nifc.hub.arcgis.com>

Facility: B-1056-N Vault Toilet Endovalley South Picnic Area

Unit - Location: ROMO - Fall River Road
FMSS ID: 25431
Field Crew: L Nelson
Last Site Visit Date: 1/30/2013

Rating: Moderate
Protection Level : Not Designated
Local ID: [Local_ID]
Lat(WGS84): 40° 24.7964' Long(WGS84): -105° 39.4972'



2013_ROMO_25431_B-1056-N Vault Toilet Endovalley South Picnic Area_D.jpg



2013_ROMO_25431_B-1056-N Vault Toilet Endovalley South Picnic Area_C.jpg



2013_ROMO_25431_B-1056-N Vault Toilet Endovalley South Picnic Area_B.jpg



2013_ROMO_25431_B-1056-N Vault Toilet Endovalley South Picnic Area_A.jpg



NPS Wildand Fire Risk Assessment - Facility Assessment

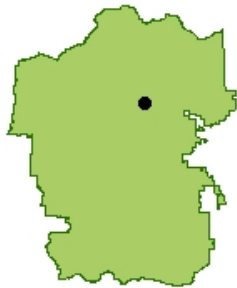
For more information visit <https://wildfire-risk-assessments-nifc.hub.arcgis.com>

Facility: B-1055-N Vault Toilet Endo Valley North Picnic Area

Unit - Location: ROMO - Fall River Road
FMSS ID: 25429
Structure Type: Building
Structure Use: Public
Owner: NPS
Field Crew: L Nelson
Last Site Visit Date: 1/30/2013

Rating: High
Protection Level : Not Designated
Resources of Concern Present? Unknown
Occupied?
Local ID: [Local_ID]
In a Community?
Lat(WGS84): 40° 24.843' Long(WGS84): -105° 39.4714'

Primary Access: Road
Ingress/Egress: One roads in/out
Access Width: 1.5 lanes (>18ft)
Access Condition: Surfaced-paved, grade<5%
Bridge Condition: None/nonflammable,load limit will not limit response
Access & Turnarounds: Access is <300 ft from facility w/turnaround
Facility Number/Sign: Marked and clearly visible
Defensible Space: <30 ft treated
Fuel Load (w/in 300 ft): Moderate
Fuel Type (w/in 300ft): Shrub or timber
Topography (w/in 300ft): Slope 21% to 30%
Roof Material: Noncombustible or not applicable
Siding Material: Wood or open sided
Foundation: Closed, >30in masonry exposed or N/A
Fences/Decks: None or noncombustible
Firewood: None
Propane Tanks: None
Water Supply: No reliable water source nearby
Overhead Hazards: No overhead hazards
Safety Zones: No safety zone(s) in area
Additional Obstacles: None
Triage Category:
Hazmat:
Assessment Comments:



● Facility
■ NPS Boundary



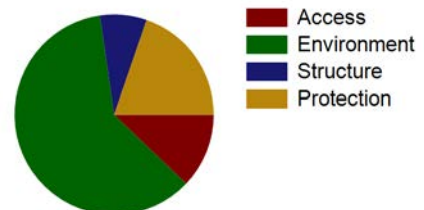
Score: 64
Rating: High



Asset Priority Index (API):
67



Factors Driving the Ratings





NPS Wildand Fire Risk Assessment - Facility Assessment

For more information visit <https://wildfire-risk-assessments-nifc.hub.arcgis.com>

Facility: B-1055-N Vault Toilet Endovalley North Picnic Area

Unit - Location: ROMO - Fall River Road
FMSS ID: 25429
Field Crew: L Nelson
Last Site Visit Date: 1/30/2013

Rating: High
Protection Level : Not Designated
Local ID: [Local_ID]
Lat(WGS84): 40° 24.843' Long(WGS84): -105° 39.4714'

Recommended Treatments

Zone	Treatment Description	Pers Hours	Treatment Cycle	Treatment Priority	Treatment Status	Date Next Treatment Recommended	Equipment Description	Equip Qty
1	Clear adjacent and overhanging fuels to create 10 feet spacing between canopy and structure or chimney openings -	3		Unknown	Planned		-	
	Limb trees 6 to 15 feet above ground -	3		Unknown	Planned		-	
2	Limb trees 6 to 15 feet above ground -	3		Unknown	Planned		-	
	Mow dead/dying grass to less than 4 inches -	3		Unknown	Planned		-	
	Open crown spacing 10 to 30 feet depending on slope -	6		Unknown	Planned		-	



NPS Wildand Fire Risk Assessment - Facility Assessment

For more information visit <https://wildfire-risk-assessments-nifc.hub.arcgis.com>

Facility: B-1055-N Vault Toilet Endovalley North Picnic Area

Unit - Location: ROMO - Fall River Road

FMSS ID: 25429

Field Crew: L Nelson

Last Site Visit Date: 1/30/2013

Rating: High

Protection Level : Not Designated

Local ID: [Local_ID]

Lat(WGS84): 40° 24.843' Long(WGS84): -105° 39.4714'

Recommended Tactics

Triage Category	Tactic Description	Pers Hours	Equipment Description	Equip Qty
	Handline -	3.00	-	
	Fuels reduction -	3.00	-	
	Engine on scene -	3.00	-	



NPS Wildand Fire Risk Assessment - Facility Assessment

For more information visit <https://wildfire-risk-assessments-nifc.hub.arcgis.com>

Facility: B-1055-N Vault Toilet Endovalley North Picnic Area

Unit - Location: ROMO - Fall River Road
FMSS ID: 25429
Field Crew: L Nelson
Last Site Visit Date: 1/30/2013

Rating: High
Protection Level : Not Designated
Local ID: [Local_ID]
Lat(WGS84): 40° 24.843' Long(WGS84): -105° 39.4714'



ROMO_25429_Vault Toilet Endo Valley N-Picnic Area (B).JPG



2013_ROMO_25429_B-1055-N Vault Toilet Endovalley North Picnic Area_D.jpg



2013_ROMO_25429_B-1055-N Vault Toilet Endovalley North Picnic Area_C.jpg



2013_ROMO_25429_B-1055-N Vault Toilet Endovalley North Picnic Area_A.jpg



NPS Wildand Fire Risk Assessment - Facility Assessment

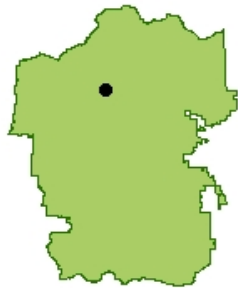
For more information visit <https://wildfire-risk-assessments-nifc.hub.arcgis.com>

Facility: B-0027-H Shelter Cabin, Patrol Cabin

Unit - Location: ROMO - Fall River Road
FMSS ID: 37090
Structure Type: Building
Structure Use: Admin
Owner: NPS
Field Crew:
Last Site Visit Date:

Rating: Not Surveyed
Protection Level : Not Designated
Resources of Concern Present? Unknown
Occupied?
Local ID: [Local_ID]
In a Community? No
Lat(WGS84): 40° 26.0026' Long(WGS84): -105° 44.0465'

Primary Access: Road
Ingress/Egress:
Access Width:
Access Condition:
Bridge Condition:
Access & Turnarounds:
Facility Number/Sign:
Defensible Space:
Fuel Load (w/in 300 ft):
Fuel Type (w/in 300ft):
Topography (w/in 300ft):
Roof Material: Combustible or no roof
Siding Material: Log
Foundation:
Fences/Decks:
Firewood:
Propane Tanks:
Water Supply:
Overhead Hazards:
Safety Zones:
Additional Obstacles:
Triage Category:
Hazmat:
Assessment Comments:



● Facility
■ NPS Boundary



Score:
Rating: Not Surveyed



Asset Priority Index (API):
71



Factors Driving the Ratings



NPS Wildand Fire Risk Assessment - Facility Assessment

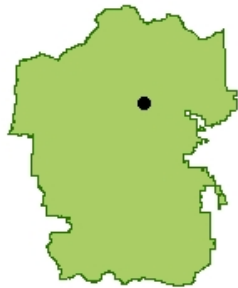
For more information visit <https://wildfire-risk-assessments-nifc.hub.arcgis.com>

Facility: B-0862-N Reservoir Enclosure - EXCESS

Unit - Location: ROMO - Fall River Road
FMSS ID: 25426
Structure Type: Building
Structure Use: Public
Owner: NPS
Field Crew:
Last Site Visit Date:

Rating: Not Surveyed
Protection Level : Not Designated
Resources of Concern Present? Unknown
Occupied?
Local ID: [Local_ID]
In a Community? No
Lat(WGS84): 40° 24.8189' Long(WGS84): -105° 39.6762'

Primary Access: Road
Ingress/Egress:
Access Width:
Access Condition:
Bridge Condition:
Access & Turnarounds:
Facility Number/Sign:
Defensible Space:
Fuel Load (w/in 300 ft):
Fuel Type (w/in 300ft):
Topography (w/in 300ft):
Roof Material:
Siding Material: Wood or open sided
Foundation:
Fences/Decks:
Firewood:
Propane Tanks:
Water Supply:
Overhead Hazards:
Safety Zones:
Additional Obstacles:
Triage Category:
Hazmat:
Assessment Comments: Access road closed due to flood damage, under construction. Superintendent approval necessary to access as of Mid-October 2014.



● Facility
■ NPS Boundary



Score:
Rating: Not Surveyed



Asset Priority Index (API):
0



Factors Driving the Ratings



NPS Wildand Fire Risk Assessment - Facility Assessment

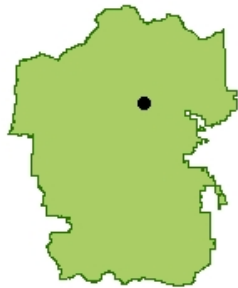
For more information visit <https://wildfire-risk-assessments-nifc.hub.arcgis.com>

Facility: B-0823-N Pumphouse/Chlorinator, Endovalley

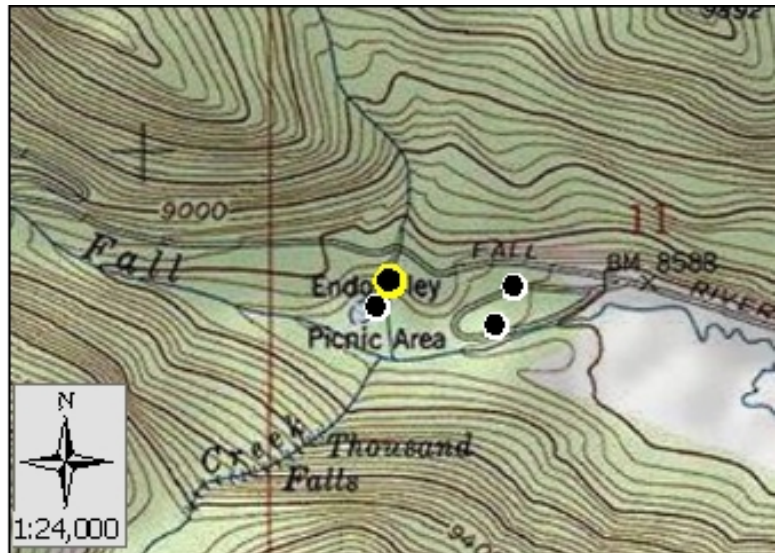
Unit - Location: ROMO - Fall River Road
FMSS ID: 98017
Structure Type: Building
Structure Use: Admin
Owner: NPS
Field Crew:
Last Site Visit Date:

Rating: Not Surveyed
Protection Level : Not Designated
Resources of Concern Present? Unknown
Occupied?
Local ID: [Local_ID]
In a Community? No
Lat(WGS84): 40° 24.8471' Long(WGS84): -105° 39.6536'

Primary Access: Road
Ingress/Egress:
Access Width:
Access Condition:
Bridge Condition:
Access & Turnarounds:
Facility Number/Sign:
Defensible Space:
Fuel Load (w/in 300 ft):
Fuel Type (w/in 300ft):
Topography (w/in 300ft):
Roof Material: Fire resistant- tar,rubberized
Siding Material: Wood or open sided
Foundation:
Fences/Decks:
Firewood:
Propane Tanks:
Water Supply:
Overhead Hazards:
Safety Zones:
Additional Obstacles:
Triage Category:
Hazmat:
Assessment Comments: Access road closed due to flood damage, under construction. Superintendent approval necessary to access as of Mid-October 2014.



● Facility
■ NPS Boundary



Score:
Rating: Not Surveyed



Asset Priority Index (API):
0



Factors Driving the Ratings



NPS Wildand Fire Risk Assessment - Facility Assessment

For more information visit <https://wildfire-risk-assessments-nifc.hub.arcgis.com>

Facility: B-1064-N Vault Toilet Rock Cut North

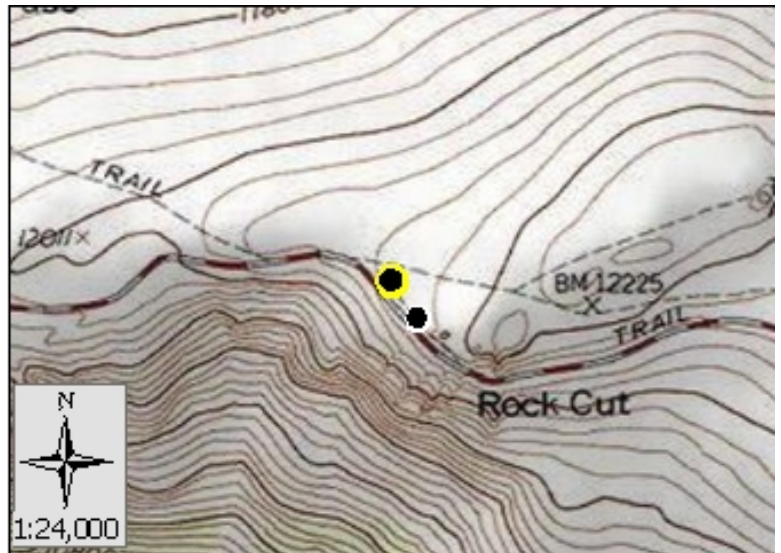
Unit - Location: ROMO - Fall River Road
FMSS ID: 25479
Structure Type: Building
Structure Use: Public
Owner: NPS
Field Crew: Dave Frey
Last Site Visit Date: 1/27/2014

Rating: Low
Protection Level : Not Designated
Resources of Concern Present? Unknown
Occupied? No
Local ID: [Local_ID]
In a Community? No
Lat(WGS84): 40° 24.7545' **Long(WGS84):** -105° 43.9985'

Primary Access: Road
Ingress/Egress: Two or more roads in/out
Access Width: 2 lanes (>24ft)
Access Condition: Surfaced-paved, grade>5%
Bridge Condition: None/nonflammable,load limit will not limit response
Access & Turnarounds: Access is <300 ft from facility w/turnaround
Facility Number/Sign: Marked and clearly visible
Defensible Space: >100ft treated
Fuel Load (w/in 300 ft): Light
Fuel Type (w/in 300ft): Grass,tundra,northern hardwood litter
Topography (w/in 300ft): Slope >40%
Roof Material: Noncombustible or not applicable
Siding Material: Rock, concrete, metal
Foundation: Closed, >30in masonry exposed or N/A
Fences/Decks: None or noncombustible
Firewood: None
Propane Tanks: None
Water Supply: No reliable water source nearby
Overhead Hazards: No overhead hazards
Safety Zones: Potential safety zone(s) in area
Additional Obstacles: None
Triage Category:
Hazmat: Human waste
Assessment Comments:



● Facility
■ NPS Boundary



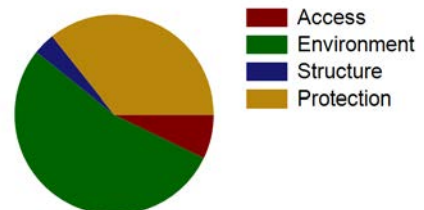
Score: 28
Rating: Low



Asset Priority Index (API):
60



Factors Driving the Ratings





NPS Wildand Fire Risk Assessment - Facility Assessment

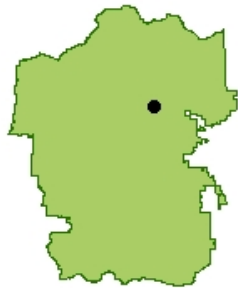
For more information visit <https://wildfire-risk-assessments-nifc.hub.arcgis.com>

Facility: **INHOLDER STRUCTURE**

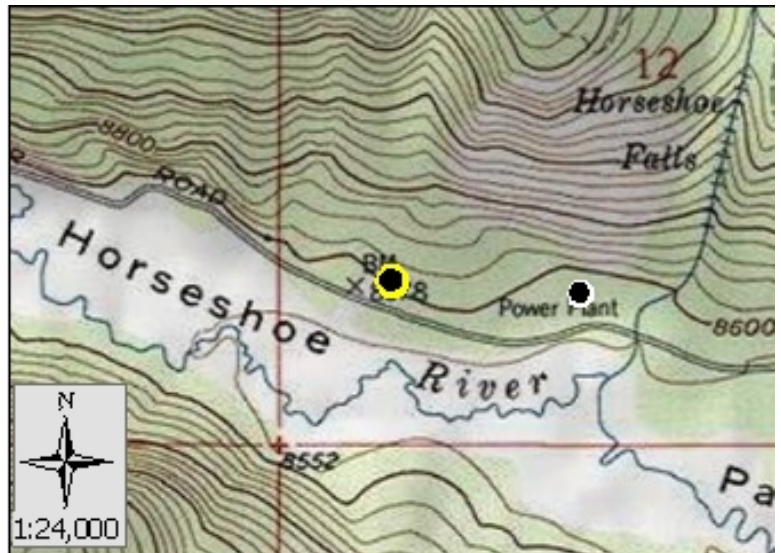
Unit - Location: ROMO - Fall River Road
FMSS ID:
Structure Type: Building
Structure Use: Private
Owner: Private
Field Crew:
Last Site Visit Date:

Rating: PVTNotSurveyed
Protection Level : Not Designated
Resources of Concern Present? Unknown
Occupied?
Local ID: [Local_ID]
In a Community? No
Lat(WGS84): 40° 24.6714' **Long(WGS84):** -105° 38.5283'

Primary Access: Road
Ingress/Egress:
Access Width:
Access Condition:
Bridge Condition:
Access & Turnarounds:
Facility Number/Sign:
Defensible Space:
Fuel Load (w/in 300 ft):
Fuel Type (w/in 300ft):
Topography (w/in 300ft):
Roof Material:
Siding Material:
Foundation:
Fences/Decks:
Firewood:
Propane Tanks:
Water Supply:
Overhead Hazards:
Safety Zones:
Additional Obstacles:
Triage Category:
Hazmat:
Assessment Comments:



● Facility
■ NPS Boundary



Score:
Rating: PVTNotSurveyed



Asset Priority Index (API):
N/A



Factors Driving the Ratings



NPS Wildand Fire Risk Assessment - Facility Assessment

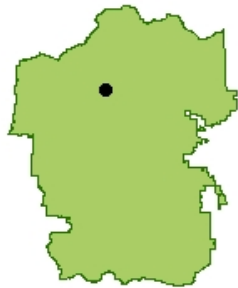
For more information visit <https://wildfire-risk-assessments-nifc.hub.arcgis.com>

Facility: B-0258-H Stable

Unit - Location: ROMO - Fall River Road
FMSS ID: 37106
Structure Type: Building
Structure Use: Admin
Owner: NPS
Field Crew:
Last Site Visit Date:

Rating: Not Surveyed
Protection Level : Not Designated
Resources of Concern Present? Unknown
Occupied?
Local ID: [Local_ID]
In a Community? No
Lat(WGS84): 40° 25.9912' **Long(WGS84):** -105° 44.0178'

Primary Access: Road
Ingress/Egress:
Access Width:
Access Condition:
Bridge Condition:
Access & Turnarounds:
Facility Number/Sign:
Defensible Space:
Fuel Load (w/in 300 ft):
Fuel Type (w/in 300ft):
Topography (w/in 300ft):
Roof Material: Combustible or no roof
Siding Material: Wood or open sided
Foundation:
Fences/Decks:
Firewood:
Propane Tanks:
Water Supply:
Overhead Hazards:
Safety Zones:
Additional Obstacles:
Triage Category:
Hazmat:
Assessment Comments:



● Facility
■ NPS Boundary



Score:
Rating: Not Surveyed



Asset Priority Index (API):
73



Factors Driving the Ratings