



NPS Wildland Fire Risk Assessment - Community Assessment

For more information visit <https://wildfire-risk-assessments-nifc.hub.arcgis.com>

Community: Aspenglen Campground
Unit - Location: ROMO - North Entrance
Field Crew: Dave Frey
Last Site Visit Date:

Count of facilities in Community: 9
Count of occupied facilities: 0
Count of facilities by Rating:

High 2
Moderate 5
Low 2
No Wildland Risk 0
Not Surveyed 0

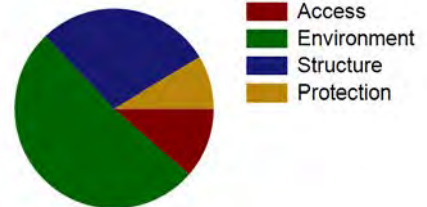
Community Description: Aspenglen campground is located south of the Fall River Entrance station. It is open from late May to late September and has 53 sites in three loops. There are both tent and RV sites in the campground. It is in a ponderosa forest and is a popular tourist destination.

Description of Factors Driving the Ratings: The factors driving the ratings are the access to the community in conjunction with the building materials.

Assessment

Primary Access: Road
Ingress/Egress: One roads in/out
Access Width: 1.5 lanes (>18ft)
Access Condition: Surfaced-paved, grade<5%
Bridge Condition: None/nonflammable,load limit will not limit response
Access & Turnarounds: Access is <300 ft from facility w/turnaround
Facility Numbers/Signs: Marked and clearly visible
Defensible Space: 30 ft treated
Fuel Load (w/in 300 ft): Heavy
Fuel Type (w/in 300ft): Shrub or timber
Topography (w/in 300ft): Slope 21% to 30%
Topographical Features:None
Roof Material: Combination of fire resitant and combustible
Building Construction: Nonflammable/fire resistant siding,flammable deck
Building Density: Buildings are less than 100 ft apart
Utility Placement: One aboveground, one underground
Water Supply: Pressurized hydrant(s) or fixed sprinkler system
Overhead Hazards: No overhead hazards
Safety Zones: No safety zone(s) in area
Additional Obstacles: None

Factors Driving the Ratings





NPS Wildand Fire Risk Assessment - **Community Assessment**

For more information visit <https://wildfire-risk-assessments-nifc.hub.arcgis.com>

Community: Aspenglen Campground

Unit - Location: ROMO - North Entrance

Field Crew: Dave Frey

Last Site Visit Date:

Facility Summary

Common Name	FMSS ID	Occupied	Facility Type	Score	Rating
B-0825-N Stage & Screen (amphitheater) AGCG	25287	N	Building	84	High
B-0153-H Comfort Station Aspenglen Campground	25279	Yes	Building	72	High
Firewood Sales Bldg Aspenglen Campground	Firewood Sales Bldg Aspenglen Campground	No	Building	62	Moderate
Projection Booth AGCG	Projection Booth AGCG	N	Building	61	Moderate
B-0401-N Comfort Station Aspenglen Campground	25282	Yes	Building	60	Moderate
B-0367-N Comfort Station Aspenglen Campground	25281	Yes	Building	56	Moderate
B-0992-N Kiosk Aspenglen Campground	25288	Yes	Building	50	Moderate
Projection Booth Aspenglen Campground	Projection Booth Aspenglen Campground	N	Building	37	Low
B-0366-N Comfort Station Aspenglen Campground	25280	N	Building	33	Low



NPS Wildand Fire Risk Assessment - **Community Assessment**

For more information visit <https://wildfire-risk-assessments-nifc.hub.arcgis.com>

Community: *Aspenglen Campground*

Unit - Location: ROMO - North Entrance

Field Crew: Dave Frey

Last Site Visit Date:

No Recommended Treatment Data Available



NPS Wildland Fire Risk Assessment - Community Assessment

For more information visit <https://wildfire-risk-assessments-nifc.hub.arcgis.com>

Community: Aspenglen Campground

Unit - Location: ROMO - North Entrance

Field Crew: Dave Frey

Last Site Visit Date:

Recommended Tactics

Tactic Description	Pers Hours	Equipment Description	Equip Qty
Helicopter bucket drops - A new start in the Fall River area has the potential to spread and move into the town of Estes Park. All initial attack activities need to be conducted with this in mind. Two type six engines and a helicopter will be to able address a new start and prevent it from getting into the Wildland urban interface.	8	-	
Handline and burnout - The tactic for Aspenglen campground is the same as Fall River Entrance. The suggested tactic for the Fall River Entrance is to construct a fire line and conduct a burnout to stop an advancing flame front. This is a huge effort and will require a large number of resources to coordinate and implement. Some of the resources required will be a taskforce of engines, mixed types including a water tender, one or two hotshot crews for line construction and conducting the burnout, multiple aircraft to aid in holding the line and look for spots. This will need to be coordinated by a type 1 or 2 team and all of the elements that go with it.	1000	Fuel-Drip Torch Mix, GL	50
		Fuel Can-	20
		Engine/OtherVehicle-Water Tender, EA	1
		Engine/OtherVehicle-Wildland Light Engine, Type 6 or 7, EA	4
		Fuel Can-5 GL, DOT/OSHA	6
		Engine/OtherVehicle-Wildland Heavy Engine, Type 3,4 or 5, EA	3
		Helicopter-Helicopter,Type 1, EA	2
Fuels reduction - A new start in the Fall River area has the potential to spread and move into the town of Estes Park. All initial attack activities need to be conducted with this in mind. Two type six engines and a helicopter will be to able address a new start and prevent it from getting into the Wildland urban interface.	72	-	



NPS Wildland Fire Risk Assessment - Community Assessment

For more information visit <https://wildfire-risk-assessments-nifc.hub.arcgis.com>

Community: Cascade Lake Aspenglen Inholder Structures

Unit - Location: ROMO - North Entrance

Field Crew: TEST

Last Site Visit Date:

Count of facilities in Community: 21

Count of occupied facilities: 1

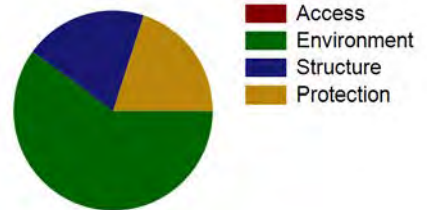
Count of facilities by Rating:

High	0
Moderate	0
Low	1
No Wildland Risk	0
Not Surveyed	20

Assessment

Primary Access: Foot
Ingress/Egress: Two or more roads in/out
Access Width: 2 lanes (>24ft)
Access Condition: Surfaced-paved, grade<5%
Bridge Condition: None/nonflammable,load limit will not limit response
Access & Turnarounds: Access is <300 ft from facility w/turnaround
Facility Numbers/Signs: Marked and clearly visible
Defensible Space: >100ft treated
Fuel Load (w/in 300 ft): Moderate
Fuel Type (w/in 300ft): Grass,tundra,northern hardwood litter
Topography (w/in 300ft): Slope <5%
Topographical Features:None
Roof Material: Fire resistant- tar,rubberized
Building Construction: Nonflammable/fire resistant siding and deck
Building Density: Buildings are at least 300 ft apart
Utility Placement: One aboveground, one underground
Water Supply: Pressurized hydrant(s) or fixed sprinkler system
Overhead Hazards: No overhead hazards
Safety Zones: Potential safety zone(s) in area
Additional Obstacles: None

Factors Driving the Ratings





NPS Wildand Fire Risk Assessment - **Community Assessment**

For more information visit <https://wildfire-risk-assessments-nifc.hub.arcgis.com>

Community: Cascade Lake Aspenglen Inholder Structures

Unit - Location: ROMO - North Entrance

Field Crew: TEST

Last Site Visit Date:

Facility Summary

Common Name	FMSS ID	Occupied	Facility Type	Score	Rating
Q-0743-H S Seasonal Quarters (Sterling) 00000743	24058	Y	Building	26	Low
INHOLDER STRUCTURE			Building		Private - Not Surveyed
INHOLDER PROPANE TANKS (2)			Building		Private - Not Surveyed
INHOLDER STRUCTURE			Building		Private - Not Surveyed
INHOLDER STRUCTURE			Building		Private - Not Surveyed
INHOLDER PROPANE TANK			Building		Private - Not Surveyed
INHOLDER STRUCTURE			Building		Private - Not Surveyed
INHOLDER STRUCTURE			Building		Private - Not Surveyed
INHOLDER STRUCTURE			Building		Private - Not Surveyed
INHOLDER PROPANE TANK			Building		Private - Not Surveyed
INHOLDER STRUCTURE			Building		Private - Not Surveyed
INHOLDER STRUCTURE			Building		Private - Not Surveyed
INHOLDER STRUCTURE			Building		Private - Not Surveyed
INHOLDER STRUCTURE			Building		Private - Not Surveyed
INHOLDER STRUCTURE			Building		Private - Not Surveyed
INHOLDER STRUCTURE			Building		Private - Not Surveyed
INHOLDER STRUCTURE			Building		Private - Not Surveyed
INHOLDER STRUCTURE			Building		Private - Not Surveyed
INHOLDER STRUCTURE			Building		Private - Not Surveyed
INHOLDER STRUCTURE			Building		Private - Not Surveyed
INHOLDER STRUCTURE			Building		Private - Not Surveyed
INHOLDER STRUCTURE			Building		Private - Not Surveyed
INHOLDER STRUCTURE			Building		Private - Not Surveyed
INHOLDER STRUCTURE			Building		Private - Not Surveyed



NPS Wildand Fire Risk Assessment - **Community Assessment**

For more information visit <https://wildfire-risk-assessments-nifc.hub.arcgis.com>

Community: *Cascade Lake Aspenglen Inholder Structures*

Unit - Location: ROMO - North Entrance

Field Crew: TEST

Last Site Visit Date:

No Recommended Treatment Data Available



NPS Wildand Fire Risk Assessment - **Community Assessment**

For more information visit <https://wildfire-risk-assessments-nifc.hub.arcgis.com>

Community: *Cascade Lake Aspenglen Inholder Structures*

Unit - Location: ROMO - North Entrance

Field Crew: TEST

Last Site Visit Date:

No Recommended Tactics Data Available



NPS Wildland Fire Risk Assessment - Community Assessment

For more information visit <https://wildfire-risk-assessments-nifc.hub.arcgis.com>

Community: Fall River Entrance
Unit - Location: ROMO - North Entrance
Field Crew: Dave Frey
Last Site Visit Date:

Count of facilities in Community: 15
Count of occupied facilities: 5
Count of facilities by Rating:

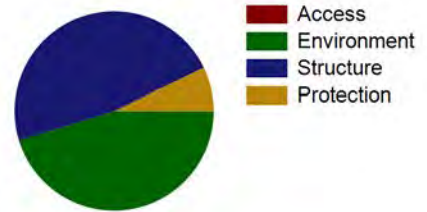
High 4
Moderate 7
Low 4
No Wildland Risk 0
Not Surveyed 0

Community Description: The Fall River Entrance community is located on US Hwy 34 and borders the town of Estes Park. The community consists of the entrance station kiosks, the Big Horn Ranger station, the Wilderness crew offices, and several other buildings in the area. It is separate from the Aspenglen campground and does not include the privately owned cabins about a mile west of the entrance.

Assessment

Primary Access: Road
Ingress/Egress: Two or more roads in/out
Access Width: 2 lanes (>24ft)
Access Condition: Surfaced-paved, grade<5%
Bridge Condition: None/nonflammable,load limit will not limit response
Access & Turnarounds: Access is <300 ft from facility w/turnaround
Facility Numbers/Signs: Marked and clearly visible
Defensible Space: >100ft treated
Fuel Load (w/in 300 ft): Moderate
Fuel Type (w/in 300ft): Shrub or timber
Topography (w/in 300ft): Slope 5% to 20%
Topographical Features:None
Roof Material: Combination of fire resisitant and combustible
Building Construction: Nonflammable/fire resistant siding,flammable deck
Building Density: Buildings are less than 100 ft apart
Utility Placement: One aboveground, one underground
Water Supply: Pressurized hydrant(s) or fixed sprinkler system
Overhead Hazards: No overhead hazards
Safety Zones: Potential saftey zone(s) in area
Additional Obstacles: None

Factors Driving the Ratings





NPS Wildand Fire Risk Assessment - Community Assessment

For more information visit <https://wildfire-risk-assessments-nifc.hub.arcgis.com>

Community: Fall River Entrance

Unit - Location: ROMO - North Entrance

Field Crew: Dave Frey

Last Site Visit Date:

Facility Summary

Common Name	FMSS ID	Occupied	Facility Type	Score	Rating
B-0847-N Pumphouse, Smith Sisters	98015	No	Building	73	High
B-0694-N Shed FRE	24056	N	Utility	66	High
B-0353-N Entrance Station Fall River	24046	Yes	Building	65	Moderate
B-0869-N Pumphouse, Bighorn	97850	N	Utility	56	Moderate
B-0671-N Kiosk - Entrance Station Fall River	24052	Yes	Building	55	Low
B-0670-N Kiosk - Entrance Station Fall River	24050	No	Building	55	Low
B-0669-N Kiosk - Entrance Station Fall River	24048	Y	Building	55	Moderate
B-0952-N Hose House	24075	Y	Building	54	Moderate
B-0168-H Bighorn Storage Shed	24044	N	Building	54	Moderate
B-0169-H Bighorn Ranger Station	24045	Y	Building	54	Moderate
B-0044-H Bighorn Ranger Station	24041	Y	Building	53	Moderate
B-0688-N Pumphouse, Smith Sisters (Aspenglen)	98014	N	Building	38	Low
Q-0748-N S 1 Bdrm House by AGCG 00000748	24065	Yes	Building	35	High
Q-0749-N S Efficiency Cabin (Smith) 00000749	24068	Yes	Building	29	High
Q-M82250 S Trailer 00M82250	73790	Y	Building	25	Low



NPS Wildand Fire Risk Assessment - **Community Assessment**

For more information visit <https://wildfire-risk-assessments-nifc.hub.arcgis.com>

Community: *Fall River Entrance*

Unit - Location: ROMO - North Entrance

Field Crew: Dave Frey

Last Site Visit Date:

No Recommended Treatment Data Available



NPS Wildland Fire Risk Assessment - Community Assessment

For more information visit <https://wildfire-risk-assessments-nifc.hub.arcgis.com>

Community: *Fall River Entrance*

Unit - Location: ROMO - North Entrance

Field Crew: Dave Frey

Last Site Visit Date:

Recommended Tactics

Tactic Description	Pers Hours	Equipment Description	Equip Qty
Helicopter bucket drops - A new start in the Fall River area has the potential to spread and move into the town of Estes Park. All initial attack activities need to be conducted with this in mind. Two type six engines and a helicopter will be to able address a new start and prevent it from getting into the Wildland urban interface.	8	-	
Handline and burnout - The Fall River Entrance community is on the border with the town of Estes Park. The Wildland Urban Interface comes right up to the border of the park. Any effort to protect the Fall River Entrance will also be protecting the Town of Estes Park. One possible tactic is to construct a fire line and conduct a burnout to stop an advancing flame front. This is a huge effort and will require a large number of resources to coordinate and implement. Some of the resources required will be a taskforce of engines, mixed types including a water tender, one or two hotshot crews for line construction and conducting the burnout, multiple aircraft to aid in holding the line and look for spots. This will need to be coordinated by a type 1 or 2 team and all of the elements that go with it.	1000	Fuel-Drip Torch Mix, GL	50
		Engine/OtherVehicle-Wildland Light Engine, Type 6 or 7, EA	4
		Engine/OtherVehicle-Wildland Heavy Engine, Type 3,4 or 5, EA	3
		Engine/OtherVehicle-Water Tender, EA	1
		Fuel Can-5 GL, DOT/OSHA	6
		Fuel Can-	20
		Helicopter-Helicopter,Type 1, EA	2
Fuels reduction - A new start in the Fall River area has the potential to spread and move into the town of Estes Park. All initial attack activities need to be conducted with this in mind. Two type six engines and a helicopter will be to able address a new start and prevent it from getting into the Wildland urban interface.	72	Engine/OtherVehicle-Wildland Light Engine, Type 6 or 7, EA	2



NPS Wildand Fire Risk Assessment - Facility Assessment

For more information visit <https://wildfire-risk-assessments-nifc.hub.arcgis.com>

Facility: B-0401-N Comfort Station Aspenglen Campground

Unit - Location: ROMO - North Entrance
FMSS ID: 25282
Structure Type: Building
Structure Use: Public
Owner: NPS
Field Crew: L Nelson
Last Site Visit Date: 1/29/2013

Rating: Moderate
Protection Level : Not Designated
Resources of Concern Present? Unknown
Occupied?
Local ID: [Local_ID]
In a Community? Yes - Aspenglen Campground
Lat(WGS84): 40° 23.9416' Long(WGS84): -105° 35.4423'

Primary Access: Road
Ingress/Egress: One roads in/out
Access Width: 1.5 lanes (>18ft)
Access Condition: Surfaced-paved, grade<5%
Bridge Condition: None/nonflammable,load limit will not limit response
Access & Turnarounds: Access is <300 ft from facility w/turnaround
Facility Number/Sign: Marked and clearly visible
Defensible Space: 30 ft treated
Fuel Load (w/in 300 ft): Moderate
Fuel Type (w/in 300ft): Shrub or timber
Topography (w/in 300ft): Slope 31% to 40%
Roof Material: Noncombustible or not applicable
Siding Material: Wood or open sided
Foundation: Closed, < 6in masonry exposed
Fences/Decks: Combustible but separated from facility
Firewood: None
Propane Tanks: None
Water Supply: Pressurized hydrant(s) or fixed sprinkler system
Overhead Hazards: No overhead hazards
Safety Zones: No safety zone(s) in area
Additional Obstacles: None
Triage Category:
Hazmat:
Assessment Comments:



● Facility
■ NPS Boundary

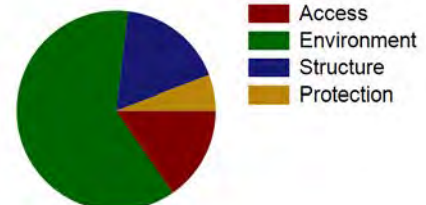
Score: 60
Rating: Moderate



Asset Priority Index (API):
67



Factors Driving the Ratings





NPS Wildand Fire Risk Assessment - Facility Assessment

For more information visit <https://wildfire-risk-assessments-nifc.hub.arcgis.com>

Facility: B-0401-N Comfort Station Aspenglen Campground

Unit - Location: ROMO - North Entrance
FMSS ID: 25282
Field Crew: L Nelson
Last Site Visit Date: 1/29/2013

Rating: Moderate
Protection Level : Not Designated
Local ID: [Local_ID]
Lat(WGS84): 40° 23.9416' Long(WGS84): -105° 35.4423'

Recommended Treatments

Zone	Treatment Description	Pers Hours	Treatment Cycle	Treatment Priority	Treatment Status	Date Next Treatment Recommended	Equipment Description	Equip Qty
1	Limb trees 6 to 15 feet above ground -	3		Unknown	Planned		-	
	Roof and gutters should be cleared of vegetative debris -	3		Unknown	Planned		-	
	Flammable ground cover such as leaf litter, woody debris or highly flammable vegetation should be removed -	3		Unknown	Planned		-	
2	Flammable ground cover should be removed or isolated -	3		Unknown	Planned		-	



NPS Wildand Fire Risk Assessment - Facility Assessment

For more information visit <https://wildfire-risk-assessments-nifc.hub.arcgis.com>

Facility: B-0401-N Comfort Station Aspenglen Campground

Unit - Location: ROMO - North Entrance

FMSS ID: 25282

Field Crew: L Nelson

Last Site Visit Date: 1/29/2013

Rating: Moderate

Protection Level : Not Designated

Local ID: [Local_ID]

Lat(WGS84): 40° 23.9416' Long(WGS84): -105° 35.4423'

Recommended Tactics

Triage Category	Tactic Description	Pers Hours	Equipment Description	Equip Qty
	Engine on scene -	3.00	-	
	Remove flammable materials -	3.00	-	
	Fuels reduction -	3.00	-	
	Burnout, no line construction necessary -	3.00	-	



NPS Wildand Fire Risk Assessment - Facility Assessment

For more information visit <https://wildfire-risk-assessments-nifc.hub.arcgis.com>

Facility: B-0401-N Comfort Station Aspenglen Campground

Unit - Location: ROMO - North Entrance
FMSS ID: 25282
Field Crew: L Nelson
Last Site Visit Date: 1/29/2013

Rating: Moderate
Protection Level : Not Designated
Local ID: [Local_ID]
Lat(WGS84): 40° 23.9416' Long(WGS84): -105° 35.4423'



2013_ROMO_25282_B-0401-N Comfort Station Aspenglen Campground_C.jpg



2013_ROMO_25282_B-0401-N Comfort Station Aspenglen Campground_B.jpg



2013_ROMO_25282_B-0401-N Comfort Station Aspenglen Campground_A.jpg



NPS Wildand Fire Risk Assessment - Facility Assessment

For more information visit <https://wildfire-risk-assessments-nifc.hub.arcgis.com>

Facility: **INHOLDER STRUCTURE**

Unit - Location: ROMO - North Entrance

FMSS ID:

Structure Type: Building

Structure Use: Private

Owner: Private

Field Crew:

Last Site Visit Date:

Rating: PVTNotSurveyed

Protection Level : Not Designated

Resources of Concern Present? Unknown

Occupied?

Local ID: [Local_ID]

In a Community? Yes - Cascade Lake Aspenglen Inholder Structures

Lat(WGS84): 40° 24.1073' **Long(WGS84):** -105° 35.8845'

Primary Access: Road

Ingress/Egress: Two or more roads in/out

Access Width: 2 lanes (>24ft)

Access Condition: Surfaced-paved, grade<5%

Bridge Condition: None/nonflammable,load limit will not limit response

Access & Turnarounds: Access is <300 ft from facility w/turnaround

Facility Number/Sign: Marked and clearly visible

Defensible Space: >100ft treated

Fuel Load (w/in 300 ft): Moderate

Fuel Type (w/in 300ft): Grass,tundra,northern hardwood litter

Topography (w/in 300ft): Slope <5%

Roof Material:

Siding Material:

Foundation:

Fences/Decks:

Firewood:

Propane Tanks:

Water Supply: Pressurized hydrant(s) or fixed sprinkler system

Overhead Hazards: No overhead hazards

Safety Zones: Potential safety zone(s) in area

Additional Obstacles: None

Triage Category:

Hazmat:

Assessment Comments:



● Facility
■ NPS Boundary



Score:
Rating: PVTNotSurveyed



Asset Priority Index (API):
N/A



Factors Driving the Ratings



■ Access
■ Environment



NPS Wildand Fire Risk Assessment - Facility Assessment

For more information visit <https://wildfire-risk-assessments-nifc.hub.arcgis.com>

Facility: **INHOLDER STRUCTURE**

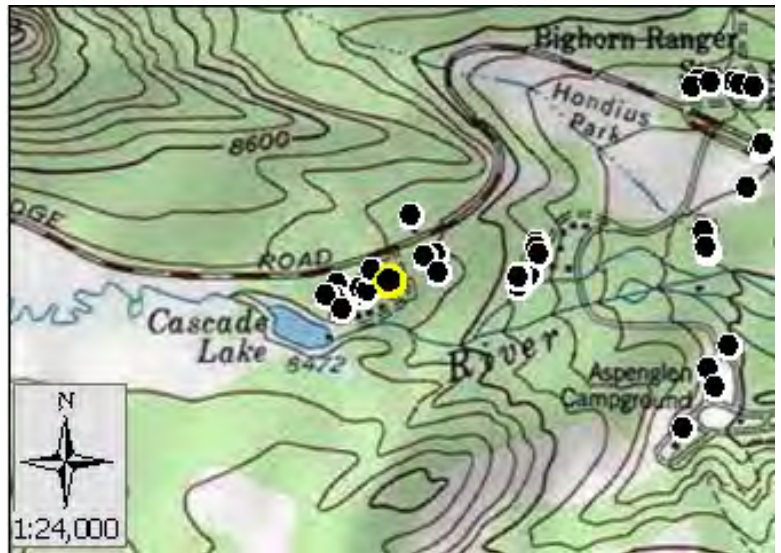
Unit - Location: ROMO - North Entrance
FMSS ID:
Structure Type: Building
Structure Use: Private
Owner: Private
Field Crew:
Last Site Visit Date:

Rating: PVTNotSurveyed
Protection Level : Not Designated
Resources of Concern Present? Unknown
Occupied?
Local ID: [Local_ID]
In a Community? Yes - Cascade Lake Aspenglen Inholder Structures
Lat(WGS84): 40° 24.1005' **Long(WGS84):** -105° 36.0732'

Primary Access: Road
Ingress/Egress: Two or more roads in/out
Access Width: 2 lanes (>24ft)
Access Condition: Surfaced-paved, grade<5%
Bridge Condition: None/nonflammable,load limit will not limit response
Access & Turnarounds: Access is <300 ft from facility w/turnaround
Facility Number/Sign: Marked and clearly visible
Defensible Space: >100ft treated
Fuel Load (w/in 300 ft): Moderate
Fuel Type (w/in 300ft): Grass,tundra,northern hardwood litter
Topography (w/in 300ft): Slope <5%
Roof Material:
Siding Material:
Foundation:
Fences/Decks:
Firewood:
Propane Tanks:
Water Supply: Pressurized hydrant(s) or fixed sprinkler system
Overhead Hazards: No overhead hazards
Safety Zones: Potential safety zone(s) in area
Additional Obstacles: None
Triage Category:
Hazmat:
Assessment Comments:



● Facility
■ NPS Boundary



Score:
Rating: PVTNotSurveyed



Asset Priority Index (API):
N/A



Factors Driving the Ratings



■ Access
■ Environment



NPS Wildand Fire Risk Assessment - Facility Assessment

For more information visit <https://wildfire-risk-assessments-nifc.hub.arcgis.com>

Facility: B-0153-H Comfort Station Aspenglen Campground

Unit - Location: ROMO - North Entrance
FMSS ID: 25279
Structure Type: Building
Structure Use: Public
Owner: NPS
Field Crew: L Nelson
Last Site Visit Date: 1/29/2013

Rating: High
Protection Level : Not Designated
Resources of Concern Present? Unknown
Occupied?
Local ID: [Local_ID]
In a Community? Yes - Aspenglen Campground
Lat(WGS84): 40° 23.9774' Long(WGS84): -105° 35.4213'

Primary Access: Road
Ingress/Egress: One roads in/out
Access Width: 1.5 lanes (>18ft)
Access Condition: Surfaced-paved, grade<5%
Bridge Condition: None/nonflammable,load limit will not limit response
Access & Turnarounds: Access is <300 ft from facility w/turnaround
Facility Number/Sign: Marked and clearly visible
Defensible Space: <30 ft treated
Fuel Load (w/in 300 ft): Moderate
Fuel Type (w/in 300ft): Shrub or timber
Topography (w/in 300ft): Slope 21% to 30%
Roof Material: Combustible or no roof
Siding Material: Wood or open sided
Foundation: Closed, < 6in masonry exposed
Fences/Decks: Combustible but separated from facility
Firewood: None
Propane Tanks: None
Water Supply: Pressurized hydrant(s) or fixed sprinkler system
Overhead Hazards: No overhead hazards
Safety Zones: No safety zone(s) in area
Additional Obstacles: Hazmat, UXO,etc. , PLEASE COMMENT
Triage Category:
Hazmat:
Assessment Comments:



● Facility
■ NPS Boundary



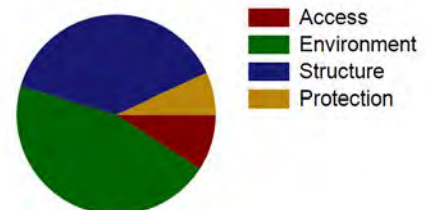
Score: 72
Rating: High



Asset Priority Index (API):
78



Factors Driving the Ratings





NPS Wildand Fire Risk Assessment - Facility Assessment

For more information visit <https://wildfire-risk-assessments-nifc.hub.arcgis.com>

Facility: B-0153-H Comfort Station Aspenglen Campground

Unit - Location: ROMO - North Entrance
FMSS ID: 25279
Field Crew: L Nelson
Last Site Visit Date: 1/29/2013

Rating: High
Protection Level : Not Designated
Local ID: [Local_ID]
Lat(WGS84): 40° 23.9774' Long(WGS84): -105° 35.4213'

Recommended Treatments

Zone	Treatment Description	Pers Hours	Treatment Cycle	Treatment Priority	Treatment Status	Date Next Treatment Recommended	Equipment Description	Equip Qty
1	Flammable ground cover such as leaf litter, woody debris or highly flammable vegetation should be removed -	3		Unknown	Planned		-	
	Limb trees 6 to 15 feet above ground -	3		Unknown	Planned		-	
2	Limb trees 6 to 15 feet above ground -	3		Unknown	Planned		-	



NPS Wildand Fire Risk Assessment - Facility Assessment

For more information visit <https://wildfire-risk-assessments-nifc.hub.arcgis.com>

Facility: B-0153-H Comfort Station Aspenglen Campground

Unit - Location: ROMO - North Entrance

FMSS ID: 25279

Field Crew: L Nelson

Last Site Visit Date: 1/29/2013

Rating: High

Protection Level : Not Designated

Local ID: [Local_ID]

Lat(WGS84): 40° 23.9774' Long(WGS84): -105° 35.4213'

Recommended Tactics

Triage Category	Tactic Description	Pers Hours	Equipment Description	Equip Qty
	Handline -	3.00	-	
	Engine on scene -	3.00	-	
	Burnout, no line construction necessary -	3.00	-	
	Fuels reduction -	3.00	-	



NPS Wildand Fire Risk Assessment - Facility Assessment

For more information visit <https://wildfire-risk-assessments-nifc.hub.arcgis.com>

Facility: B-0153-H Comfort Station Aspenglen Campground

Unit - Location: ROMO - North Entrance
FMSS ID: 25279
Field Crew: L Nelson
Last Site Visit Date: 1/29/2013

Rating: High
Protection Level : Not Designated
Local ID: [Local_ID]
Lat(WGS84): 40° 23.9774' Long(WGS84): -105° 35.4213'



2013_ROMO_25279_B-0153-H Comfort Station Aspenglen Campground_D.jpg



2013_ROMO_25279_B-0153-H Comfort Station Aspenglen Campground_C.jpg



2013_ROMO_25279_B-0153-H Comfort Station Aspenglen Campground_B.jpg



2013_ROMO_25279_B-0153-H Comfort Station Aspenglen Campground_A.jpg



NPS Wildand Fire Risk Assessment - Facility Assessment

For more information visit <https://wildfire-risk-assessments-nifc.hub.arcgis.com>

Facility: **INHOLDER STRUCTURE**

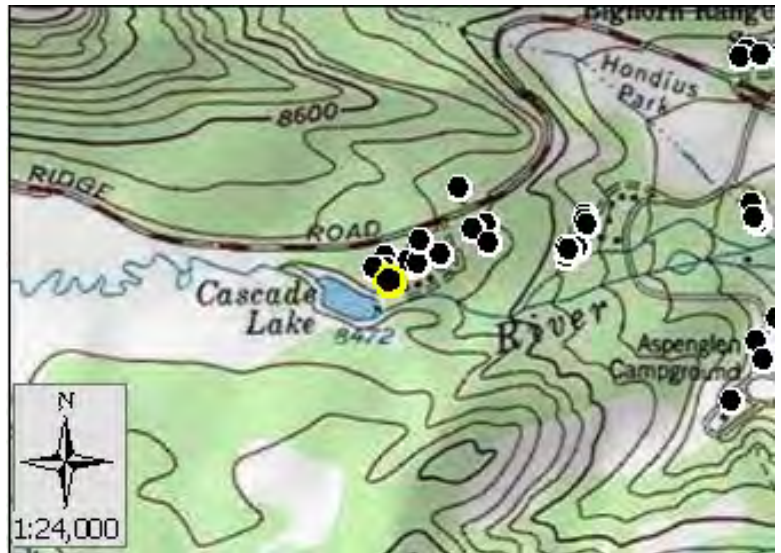
Unit - Location: ROMO - North Entrance
FMSS ID:
Structure Type: Building
Structure Use: Private
Owner: Private
Field Crew:
Last Site Visit Date:

Rating: PVTNotSurveyed
Protection Level : Not Designated
Resources of Concern Present? Unknown
Occupied?
Local ID: [Local_ID]
In a Community? Yes - Cascade Lake Aspenglen Inholder Structures
Lat(WGS84): 40° 24.0681' **Long(WGS84):** -105° 36.1459'

Primary Access: Road
Ingress/Egress: Two or more roads in/out
Access Width: 2 lanes (>24ft)
Access Condition: Surfaced-paved, grade<5%
Bridge Condition: None/nonflammable,load limit will not limit response
Access & Turnarounds: Access is <300 ft from facility w/turnaround
Facility Number/Sign: Marked and clearly visible
Defensible Space: >100ft treated
Fuel Load (w/in 300 ft): Moderate
Fuel Type (w/in 300ft): Grass,tundra,northern hardwood litter
Topography (w/in 300ft): Slope <5%
Roof Material:
Siding Material:
Foundation:
Fences/Decks:
Firewood:
Propane Tanks:
Water Supply: Pressurized hydrant(s) or fixed sprinkler system
Overhead Hazards: No overhead hazards
Safety Zones: Potential safety zone(s) in area
Additional Obstacles: None
Triage Category:
Hazmat:
Assessment Comments:



● Facility
■ NPS Boundary



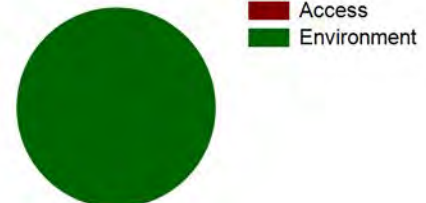
Score:
Rating: PVTNotSurveyed



Asset Priority Index (API):
N/A



Factors Driving the Ratings





NPS Wildand Fire Risk Assessment - Facility Assessment

For more information visit <https://wildfire-risk-assessments-nifc.hub.arcgis.com>

Facility: B-0694-N Shed FRE

Unit - Location: ROMO - North Entrance
FMSS ID: 24056
Structure Type: Utility
Structure Use: Other
Owner: NPS
Field Crew: L Nelson
Last Site Visit Date: 12/2/2013

Rating: High
Protection Level : Unknown
Resources of Concern Present? Unknown
Occupied? No
Local ID: [Local_ID]
In a Community? Yes - Fall River Entrance
Lat(WGS84): 40° 24.4764' **Long(WGS84):** -105° 35.5818'

Primary Access: Road
Ingress/Egress: One roads in/out
Access Width: 1 lane (<18ft)
Access Condition: Non-surfaced- gravel,dirt,grade>5%
Bridge Condition: None/nonflammable,load limit will not limit response
Access & Turnarounds: Access is >300ft from facility w/o turnaround
Facility Number/Sign: None or not clearly visible
Defensible Space: 30 ft treated
Fuel Load (w/in 300 ft): Moderate
Fuel Type (w/in 300ft): Shrub or timber
Topography (w/in 300ft): Slope 31% to 40%
Roof Material: Combustible or no roof
Siding Material: Wood or open sided
Foundation: Closed, 6in to 30in masonry exposed
Fences/Decks: None or noncombustible
Firewood: None
Propane Tanks: None
Water Supply: No reliable water source nearby
Overhead Hazards: No overhead hazards
Safety Zones: No safety zone(s) in area
Additional Obstacles: None
Triage Category:
Hazmat:
Assessment Comments:



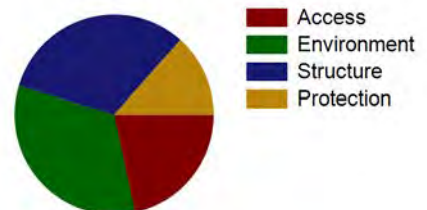
Score: 66
Rating: High



Asset Priority Index (API):
7



Factors Driving the Ratings





NPS Wildand Fire Risk Assessment - Facility Assessment

For more information visit <https://wildfire-risk-assessments-nifc.hub.arcgis.com>

Facility: B-0694-N Shed FRE

Unit - Location: ROMO - North Entrance
FMSS ID: 24056
Field Crew: L Nelson
Last Site Visit Date: 12/2/2013

Rating: High
Protection Level : Unknown
Local ID: [Local_ID]
Lat(WGS84): 40° 24.4764' Long(WGS84): -105° 35.5818'

Recommended Treatments

Zone	Treatment Description	Pers Hours	Treatment Cycle	Treatment Priority	Treatment Status	Date Next Treatment Recommended	Equipment Description	Equip Qty
1	Flammable ground cover such as leaf litter, woody debris or highly flammable vegetation should be removed -	3		Unknown	Planned		-	
2	Flammable ground cover should be removed or isolated -	3		Unknown	Planned		-	



NPS Wildand Fire Risk Assessment - Facility Assessment

For more information visit <https://wildfire-risk-assessments-nifc.hub.arcgis.com>

Facility: B-0694-N Shed FRE

Unit - Location: ROMO - North Entrance

FMSS ID: 24056

Field Crew: L Nelson

Last Site Visit Date: 12/2/2013

Rating: High

Protection Level : Unknown

Local ID: [Local_ID]

Lat(WGS84): 40° 24.4764' Long(WGS84): -105° 35.5818'

Recommended Tactics

Triage Category	Tactic Description	Pers Hours	Equipment Description	Equip Qty
	Handline -	3.00	-	
	Fuels reduction -	3.00	-	



NPS Wildand Fire Risk Assessment - Facility Assessment

For more information visit <https://wildfire-risk-assessments-nifc.hub.arcgis.com>

Facility: B-0694-N Shed FRE

Unit - Location: ROMO - North Entrance
FMSS ID: 24056
Field Crew: L Nelson
Last Site Visit Date: 12/2/2013

Rating: High
Protection Level : Unknown
Local ID: [Local_ID]
Lat(WGS84): 40° 24.4764' Long(WGS84): -105° 35.5818'



2013_ROMO_24056_B-0694-N Shed FRE_D.jpg



2013_ROMO_24056_B-0694-N Shed FRE_C.jpg



2013_ROMO_24056_B-0694-N Shed FRE_B.jpg



2013_ROMO_24056_B-0694-N Shed FRE_A.jpg



NPS Wildand Fire Risk Assessment - Facility Assessment

For more information visit <https://wildfire-risk-assessments-nifc.hub.arcgis.com>

Facility: Projection Booth Aspenglen Campground

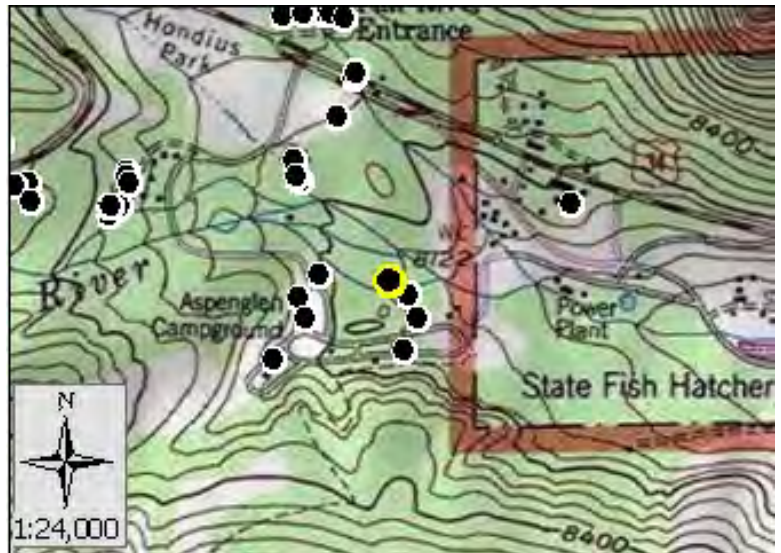
Unit - Location: ROMO - North Entrance
FMSS ID: Projection Booth Aspenglen Campground
Structure Type: Building
Structure Use: Admin
Owner: NPS
Field Crew: L Nelson
Last Site Visit Date: 12/2/2013

Rating: Low
Protection Level : Unknown
Resources of Concern Present? Unknown
Occupied? No
Local ID: [Local_ID]
In a Community? Yes - Aspenglen Campground
Lat(WGS84): 40° 24.0204' **Long(WGS84):** -105° 35.46'

Primary Access: Road
Ingress/Egress: One roads in/out
Access Width: 1.5 lanes (>18ft)
Access Condition: Surfaced-paved, grade<5%
Bridge Condition: None/nonflammable,load limit will not limit response
Access & Turnarounds: Access is <300 ft from facility w/turnaround
Facility Number/Sign: None or not clearly visible
Defensible Space: 30 ft treated
Fuel Load (w/in 300 ft): Moderate
Fuel Type (w/in 300ft): Shrub or timber
Topography (w/in 300ft): Slope 21% to 30%
Roof Material: Noncombustible or not applicable
Siding Material: Wood or open sided
Foundation: Closed, < 6in masonry exposed
Fences/Decks: None or noncombustible
Firewood: None
Propane Tanks: None
Water Supply: Pressurized hydrant(s) or fixed sprinkler system
Overhead Hazards: No overhead hazards
Safety Zones: No safety zone(s) in area
Additional Obstacles: None
Triage Category:
Hazmat:
Assessment Comments:



● Facility
■ NPS Boundary



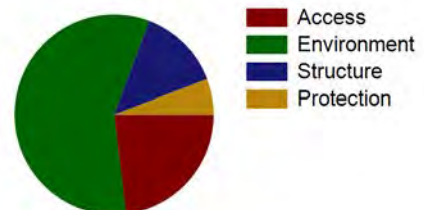
Score: 37
Rating: Low



Asset Priority Index (API):
N/A



Factors Driving the Ratings





NPS Wildand Fire Risk Assessment - Facility Assessment

For more information visit <https://wildfire-risk-assessments-nifc.hub.arcgis.com>

Facility: Projection Booth Aspenglen Campground

Unit - Location: ROMO - North Entrance
FMSS ID: Projection Booth Aspenglen Campground
Field Crew: L Nelson
Last Site Visit Date: 12/2/2013

Rating: Low
Protection Level : Unknown
Local ID: [Local_ID]
Lat(WGS84): 40° 24.0204' Long(WGS84): -105° 35.46'

Recommended Treatments

Zone	Treatment Description	Pers Hours	Treatment Cycle	Treatment Priority	Treatment Status	Date Next Treatment Recommended	Equipment Description	Equip Qty
1	Limb trees 6 to 15 feet above ground -	2		Unknown	Planned		-	
	Flammable ground cover such as leaf litter, woody debris or highly flammable vegetation should be removed -	2		Unknown	Planned		-	
2	Flammable ground cover should be removed or isolated -	2		Unknown	Planned		-	



NPS Wildand Fire Risk Assessment - Facility Assessment

For more information visit <https://wildfire-risk-assessments-nifc.hub.arcgis.com>

Facility: Projection Booth Aspenglen Campground

Unit - Location: ROMO - North Entrance
FMSS ID: Projection Booth Aspenglen Campground
Field Crew: L Nelson
Last Site Visit Date: 12/2/2013

Rating: Low
Protection Level : Unknown
Local ID: [Local_ID]
Lat(WGS84): 40° 24.0204' Long(WGS84): -105° 35.46'

Recommended Tactics

Triage Category	Tactic Description	Pers Hours	Equipment Description	Equip Qty
	Handline -	3.00	-	
	Fuels reduction -	3.00	-	
	Burnout, no line construction necessary -	3.00	-	
	Fuels reduction -	3.00	-	
	Handline and burnout -	3.00	-	



NPS Wildand Fire Risk Assessment - Facility Assessment

For more information visit <https://wildfire-risk-assessments-nifc.hub.arcgis.com>

Facility: Projection Booth Aspenglen Campground

Unit - Location: ROMO - North Entrance
FMSS ID: Projection Booth Aspenglen Campground
Field Crew: L Nelson
Last Site Visit Date: 12/2/2013

Rating: Low
Protection Level : Unknown
Local ID: [Local_ID]
Lat(WGS84): 40° 24.0204' Long(WGS84): -105° 35.46'



2013_ROMO_Projection Booth Aspenglen Campground_Projection Booth Aspenglen Campground_D.jpg



2013_ROMO_Projection Booth Aspenglen Campground_Projection Booth Aspenglen Campground_C.jpg



2013_ROMO_Projection Booth Aspenglen Campground_Projection Booth Aspenglen Campground_B.jpg



2013_ROMO_Projection Booth Aspenglen Campground_Projection Booth Aspenglen Campground_A.jpg



NPS Wildand Fire Risk Assessment - Facility Assessment

For more information visit <https://wildfire-risk-assessments-nifc.hub.arcgis.com>

Facility: **INHOLDER STRUCTURE**

Unit - Location: ROMO - North Entrance
FMSS ID:
Structure Type: Building
Structure Use: Private
Owner: Private
Field Crew:
Last Site Visit Date:

Rating: PVTNotSurveyed
Protection Level : Not Designated
Resources of Concern Present? Unknown
Occupied?
Local ID: [Local_ID]
In a Community? No
Lat(WGS84): 40° 23.8396' **Long(WGS84):** -105° 34.8514'

Primary Access: Road
Ingress/Egress:
Access Width:
Access Condition:
Bridge Condition:
Access & Turnarounds:
Facility Number/Sign:
Defensible Space:
Fuel Load (w/in 300 ft):
Fuel Type (w/in 300ft):
Topography (w/in 300ft):
Roof Material:
Siding Material:
Foundation:
Fences/Decks:
Firewood:
Propane Tanks:
Water Supply:
Overhead Hazards:
Safety Zones:
Additional Obstacles:
Triage Category:
Hazmat:
Assessment Comments:



● Facility
■ NPS Boundary



Score:
Rating: PVTNotSurveyed



Asset Priority Index (API):
N/A



Factors Driving the Ratings



NPS Wildand Fire Risk Assessment - Facility Assessment

For more information visit <https://wildfire-risk-assessments-nifc.hub.arcgis.com>

Facility: **INHOLDER STRUCTURE**

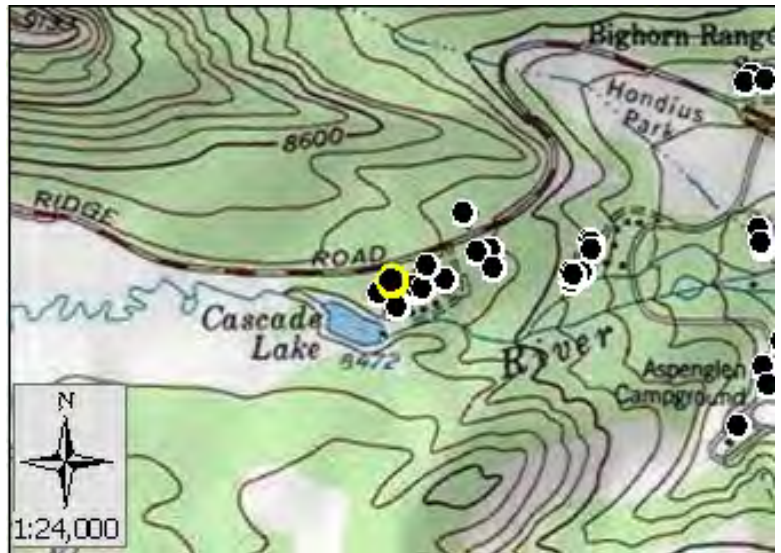
Unit - Location: ROMO - North Entrance
FMSS ID:
Structure Type: Building
Structure Use: Private
Owner: Private
Field Crew:
Last Site Visit Date:

Rating: PVTNotSurveyed
Protection Level : Not Designated
Resources of Concern Present? Unknown
Occupied?
Local ID: [Local_ID]
In a Community? Yes - Cascade Lake Aspenglen Inholder Structures
Lat(WGS84): 40° 24.0968' **Long(WGS84):** -105° 36.154'

Primary Access: Road
Ingress/Egress: Two or more roads in/out
Access Width: 2 lanes (>24ft)
Access Condition: Surfaced-paved, grade<5%
Bridge Condition: None/nonflammable,load limit will not limit response
Access & Turnarounds: Access is <300 ft from facility w/turnaround
Facility Number/Sign: Marked and clearly visible
Defensible Space: >100ft treated
Fuel Load (w/in 300 ft): Moderate
Fuel Type (w/in 300ft): Grass,tundra,northern hardwood litter
Topography (w/in 300ft): Slope <5%
Roof Material:
Siding Material:
Foundation:
Fences/Decks:
Firewood:
Propane Tanks:
Water Supply: Pressurized hydrant(s) or fixed sprinkler system
Overhead Hazards: No overhead hazards
Safety Zones: Potential safety zone(s) in area
Additional Obstacles: None
Triage Category:
Hazmat:
Assessment Comments:



● Facility
■ NPS Boundary



Score:
Rating: PVTNotSurveyed



Asset Priority Index (API):
N/A



Factors Driving the Ratings



■ Access
■ Environment



NPS Wildand Fire Risk Assessment - Facility Assessment

For more information visit <https://wildfire-risk-assessments-nifc.hub.arcgis.com>

Facility: B-0847-N Pumphouse, Smith Sisters

Unit - Location: ROMO - North Entrance
FMSS ID: 98015
Structure Type: Building
Structure Use: Admin
Owner: NPS
Field Crew:
Last Site Visit Date:

Rating: High
Protection Level : Not Designated
Resources of Concern Present? Unknown
Occupied?
Local ID: [Local_ID]
In a Community? Yes - Fall River Entrance
Lat(WGS84): 40° 24.1404' Long(WGS84): -105° 35.6016'

Primary Access: Road
Ingress/Egress: Two or more roads in/out
Access Width: 2 lanes (>24ft)
Access Condition: Surfaced-paved, grade<5%
Bridge Condition: None/nonflammable,load limit will not limit response
Access & Turnarounds: Access is <300 ft from facility w/turnaround
Facility Number/Sign: Marked and clearly visible
Defensible Space: <30 ft treated
Fuel Load (w/in 300 ft): Moderate
Fuel Type (w/in 300ft): Shrub or timber
Topography (w/in 300ft): Slope 5% to 20%
Roof Material: Combustible or no roof
Siding Material: Wood or open sided
Foundation: Closed, < 6in masonry exposed
Fences/Decks: None or noncombustible
Firewood: None
Propane Tanks:
Water Supply: Pressurized hydrant(s) or fixed sprinkler system
Overhead Hazards: No overhead hazards
Safety Zones: Potential safety zone(s) in area
Additional Obstacles: None
Triage Category:
Hazmat:
Assessment Comments:



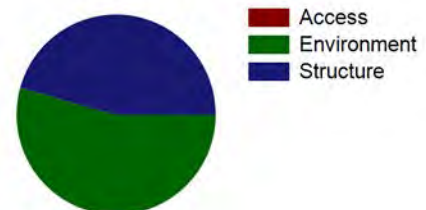
Score: 73
Rating: High



Asset Priority Index (API):
88



Factors Driving the Ratings





NPS Wildand Fire Risk Assessment - Facility Assessment

For more information visit <https://wildfire-risk-assessments-nifc.hub.arcgis.com>

Facility: B-0670-N Kiosk - Entrance Station Fall River

Unit - Location: ROMO - North Entrance
FMSS ID: 24050
Structure Type: Building
Structure Use: Public
Owner: NPS
Field Crew: L Nelson
Last Site Visit Date: 1/29/2013

Rating: Low
Protection Level : Not Designated
Resources of Concern Present? Unknown
Occupied?
Local ID: [Local_ID]
In a Community? Yes - Fall River Entrance
Lat(WGS84): 40° 24.2549' **Long(WGS84):** -105° 35.5162'

Primary Access: Road
Ingress/Egress: Two or more roads in/out
Access Width: 2 lanes (>24ft)
Access Condition: Surfaced-paved, grade<5%
Bridge Condition: None/nonflammable,load limit will not limit response
Access & Turnarounds: Access is <300 ft from facility w/turnaround
Facility Number/Sign: Marked and clearly visible
Defensible Space: 30 ft treated
Fuel Load (w/in 300 ft): Light
Fuel Type (w/in 300ft): Shrub or timber
Topography (w/in 300ft): Slope <5%
Roof Material: Combustible or no roof
Siding Material: Wood or open sided
Foundation: Closed, < 6in masonry exposed
Fences/Decks: None or noncombustible
Firewood: None
Propane Tanks: None
Water Supply: Pressurized hydrant(s) or fixed sprinkler system
Overhead Hazards: No overhead hazards
Safety Zones: No safety zone(s) in area
Additional Obstacles: None
Triage Category:
Hazmat:
Assessment Comments:



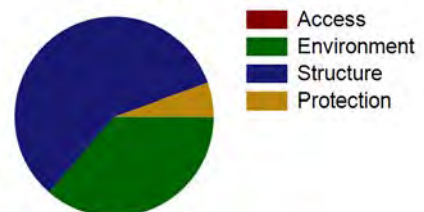
Score: 55
Rating: Low



Asset Priority Index (API):
55



Factors Driving the Ratings





NPS Wildand Fire Risk Assessment - Facility Assessment

For more information visit <https://wildfire-risk-assessments-nifc.hub.arcgis.com>

Facility: B-0670-N Kiosk - Entrance Station Fall River

Unit - Location: ROMO - North Entrance
FMSS ID: 24050
Field Crew: L Nelson
Last Site Visit Date: 1/29/2013

Rating: Low
Protection Level : Not Designated
Local ID: [Local_ID]
Lat(WGS84): 40° 24.2549' Long(WGS84): -105° 35.5162'

Recommended Treatments

Zone	Treatment Description	Pers Hours	Treatment Cycle	Treatment Priority	Treatment Status	Date Next Treatment Recommended	Equipment Description	Equip Qty
2	Mow dead/dying grass to less than 4 inches -	3		Unknown	Planned		-	



NPS Wildand Fire Risk Assessment - Facility Assessment

For more information visit <https://wildfire-risk-assessments-nifc.hub.arcgis.com>

Facility: B-0670-N Kiosk - Entrance Station Fall River

Unit - Location: ROMO - North Entrance

FMSS ID: 24050

Field Crew: L Nelson

Last Site Visit Date: 1/29/2013

Rating: Low

Protection Level : Not Designated

Local ID: [Local_ID]

Lat(WGS84): 40° 24.2549' Long(WGS84): -105° 35.5162'

Recommended Tactics

Triage Category	Tactic Description	Pers Hours	Equipment Description	Equip Qty
	Engine on scene - Time required would change with fire conditions.	3.00	-	



NPS Wildand Fire Risk Assessment - Facility Assessment

For more information visit <https://wildfire-risk-assessments-nifc.hub.arcgis.com>

Facility: B-0670-N Kiosk - Entrance Station Fall River

Unit - Location: ROMO - North Entrance
FMSS ID: 24050
Field Crew: L Nelson
Last Site Visit Date: 1/29/2013

Rating: Low
Protection Level : Not Designated
Local ID: [Local_ID]
Lat(WGS84): 40° 24.2549' Long(WGS84): -105° 35.5162'



2013_ROMO_24050_B-0670-N Kiosk - Entrance Station Fall River_D.jpg



2013_ROMO_24050_B-0670-N Kiosk - Entrance Station Fall River_C.jpg



2013_ROMO_24050_B-0670-N Kiosk - Entrance Station Fall River_B.jpg



2013_ROMO_24050_B-0670-N Kiosk - Entrance Station Fall River_A.jpg



NPS Wildand Fire Risk Assessment - Facility Assessment

For more information visit <https://wildfire-risk-assessments-nifc.hub.arcgis.com>

Facility: B-0367-N Comfort Station Aspenglen Campground

Unit - Location: ROMO - North Entrance
FMSS ID: 25281
Structure Type: Building
Structure Use: Public
Owner: NPS
Field Crew: L Nelson
Last Site Visit Date: 1/29/2013

Rating: Moderate
Protection Level : Not Designated
Resources of Concern Present? Unknown
Occupied?
Local ID: [Local_ID]
In a Community? Yes - Aspenglen Campground
Lat(WGS84): 40° 23.9327' **Long(WGS84):** -105° 35.6357'

Primary Access: Road
Ingress/Egress: One roads in/out
Access Width: 1.5 lanes (>18ft)
Access Condition: Surfaced-paved, grade<5%
Bridge Condition: None/nonflammable,load limit will not limit response
Access & Turnarounds: Access is <300 ft from facility w/turnaround
Facility Number/Sign: Marked and clearly visible
Defensible Space: <30 ft treated
Fuel Load (w/in 300 ft): Moderate
Fuel Type (w/in 300ft): Shrub or timber
Topography (w/in 300ft): Slope 5% to 20%
Roof Material: Noncombustible or not applicable
Siding Material: Wood or open sided
Foundation: Closed, < 6in masonry exposed
Fences/Decks: None or noncombustible
Firewood: None
Propane Tanks: None
Water Supply: Pressurized hydrant(s) or fixed sprinkler system
Overhead Hazards: No overhead hazards
Safety Zones: No safety zone(s) in area
Additional Obstacles: None
Triage Category:
Hazmat:
Assessment Comments:



● Facility
■ NPS Boundary



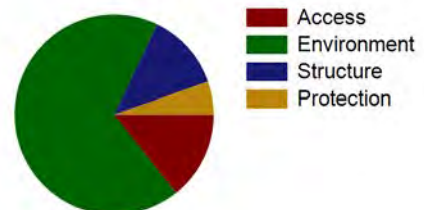
Score: 56
Rating: Moderate



Asset Priority Index (API):
67



Factors Driving the Ratings





NPS Wildand Fire Risk Assessment - Facility Assessment

For more information visit <https://wildfire-risk-assessments-nifc.hub.arcgis.com>

Facility: B-0367-N Comfort Station Aspenglen Campground

Unit - Location: ROMO - North Entrance
FMSS ID: 25281
Field Crew: L Nelson
Last Site Visit Date: 1/29/2013

Rating: Moderate
Protection Level : Not Designated
Local ID: [Local_ID]
Lat(WGS84): 40° 23.9327' Long(WGS84): -105° 35.6357'

Recommended Treatments

Zone	Treatment Description	Pers Hours	Treatment Cycle	Treatment Priority	Treatment Status	Date Next Treatment Recommended	Equipment Description	Equip Qty
1	Flammable ground cover such as leaf litter, woody debris or highly flammable vegetation should be removed -	3		Unknown	Planned		-	



NPS Wildand Fire Risk Assessment - Facility Assessment

For more information visit <https://wildfire-risk-assessments-nifc.hub.arcgis.com>

Facility: B-0367-N Comfort Station Aspenglen Campground

Unit - Location: ROMO - North Entrance

FMSS ID: 25281

Field Crew: L Nelson

Last Site Visit Date: 1/29/2013

Rating: Moderate

Protection Level : Not Designated

Local ID: [Local_ID]

Lat(WGS84): 40° 23.9327' Long(WGS84): -105° 35.6357'

Recommended Tactics

Triage Category	Tactic Description	Pers Hours	Equipment Description	Equip Qty
	Engine on scene -	3.00	-	
	Fuels reduction -	3.00	-	



NPS Wildand Fire Risk Assessment - Facility Assessment

For more information visit <https://wildfire-risk-assessments-nifc.hub.arcgis.com>

Facility: B-0367-N Comfort Station Aspenglen Campground

Unit - Location: ROMO - North Entrance
FMSS ID: 25281
Field Crew: L Nelson
Last Site Visit Date: 1/29/2013

Rating: Moderate
Protection Level : Not Designated
Local ID: [Local_ID]
Lat(WGS84): 40° 23.9327' Long(WGS84): -105° 35.6357'



2013_ROMO_25281_B-0367-N Comfort Station Aspenglen Campground_D.jpg



2013_ROMO_25281_B-0367-N Comfort Station Aspenglen Campground_C.jpg



2013_ROMO_25281_B-0367-N Comfort Station Aspenglen Campground_B.jpg



2013_ROMO_25281_B-0367-N Comfort Station Aspenglen Campground_A.jpg



NPS Wildand Fire Risk Assessment - Facility Assessment

For more information visit <https://wildfire-risk-assessments-nifc.hub.arcgis.com>

Facility: **INHOLDER PROPANE TANKS (2)**

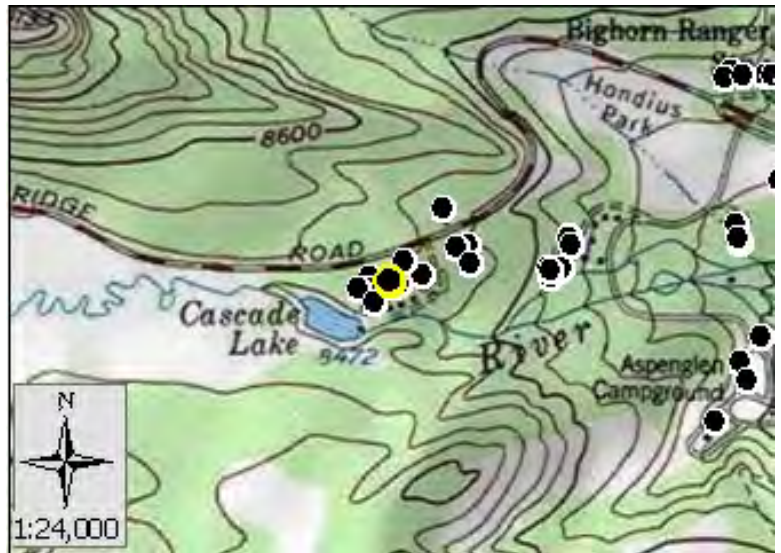
Unit - Location: ROMO - North Entrance
FMSS ID:
Structure Type: Building
Structure Use: Private
Owner: Private
Field Crew:
Last Site Visit Date:

Rating: PVTNotSurveyed
Protection Level : Not Designated
Resources of Concern Present? Unknown
Occupied?
Local ID: [Local_ID]
In a Community? Yes - Cascade Lake Aspenglen Inholder Structures
Lat(WGS84): 40° 24.0915' **Long(WGS84):** -105° 36.1209'

Primary Access: Road
Ingress/Egress: Two or more roads in/out
Access Width: 2 lanes (>24ft)
Access Condition: Surfaced-paved, grade<5%
Bridge Condition: None/nonflammable,load limit will not limit response
Access & Turnarounds: Access is <300 ft from facility w/turnaround
Facility Number/Sign: Marked and clearly visible
Defensible Space: >100ft treated
Fuel Load (w/in 300 ft): Moderate
Fuel Type (w/in 300ft): Grass,tundra,northern hardwood litter
Topography (w/in 300ft): Slope <5%
Roof Material:
Siding Material:
Foundation:
Fences/Decks:
Firewood:
Propane Tanks:
Water Supply: Pressurized hydrant(s) or fixed sprinkler system
Overhead Hazards: No overhead hazards
Safety Zones: Potential safety zone(s) in area
Additional Obstacles: None
Triage Category:
Hazmat:
Assessment Comments:



● Facility
■ NPS Boundary



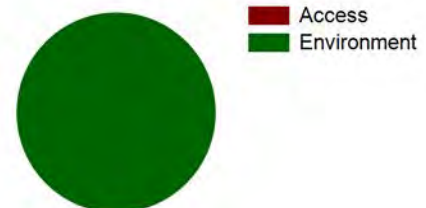
Score:
Rating: PVTNotSurveyed



Asset Priority Index (API):
N/A



Factors Driving the Ratings





NPS Wildand Fire Risk Assessment - Facility Assessment

For more information visit <https://wildfire-risk-assessments-nifc.hub.arcgis.com>

Facility: **INHOLDER STRUCTURE**

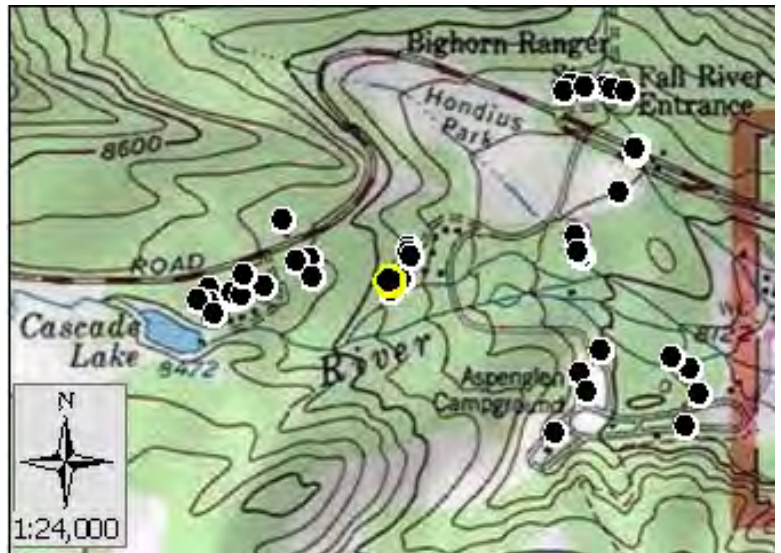
Unit - Location: ROMO - North Entrance
FMSS ID:
Structure Type: Building
Structure Use: Private
Owner: Private
Field Crew:
Last Site Visit Date:

Rating: PVTNotSurveyed
Protection Level : Not Designated
Resources of Concern Present? Unknown
Occupied?
Local ID: [Local_ID]
In a Community? Yes - Cascade Lake Aspenglen Inholder Structures
Lat(WGS84): 40° 24.1057' **Long(WGS84):** -105° 35.8817'

Primary Access: Road
Ingress/Egress: Two or more roads in/out
Access Width: 2 lanes (>24ft)
Access Condition: Surfaced-paved, grade<5%
Bridge Condition: None/nonflammable,load limit will not limit response
Access & Turnarounds: Access is <300 ft from facility w/turnaround
Facility Number/Sign: Marked and clearly visible
Defensible Space: >100ft treated
Fuel Load (w/in 300 ft): Moderate
Fuel Type (w/in 300ft): Grass,tundra,northern hardwood litter
Topography (w/in 300ft): Slope <5%
Roof Material:
Siding Material:
Foundation:
Fences/Decks:
Firewood:
Propane Tanks:
Water Supply: Pressurized hydrant(s) or fixed sprinkler system
Overhead Hazards: No overhead hazards
Safety Zones: Potential safety zone(s) in area
Additional Obstacles: None
Triage Category:
Hazmat:
Assessment Comments:



● Facility
■ NPS Boundary



Score:
Rating: PVTNotSurveyed



Asset Priority Index (API):
N/A



Factors Driving the Ratings



■ Access
■ Environment



NPS Wildand Fire Risk Assessment - Facility Assessment

For more information visit <https://wildfire-risk-assessments-nifc.hub.arcgis.com>

Facility: B-0992-N Kiosk Aspenglen Campground

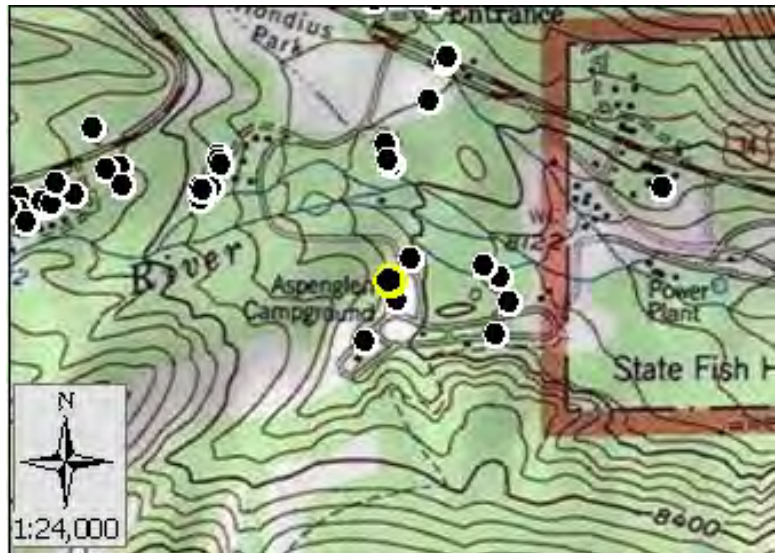
Unit - Location: ROMO - North Entrance
FMSS ID: 25288
Structure Type: Building
Structure Use: Admin
Owner: NPS
Field Crew: L Nelson
Last Site Visit Date: 1/29/2013

Rating: Moderate
Protection Level : Not Designated
Resources of Concern Present? Unknown
Occupied?
Local ID: [Local_ID]
In a Community? Yes - Aspenglen Campground
Lat(WGS84): 40° 24.0011' **Long(WGS84):** -105° 35.5975'

Primary Access: Road
Ingress/Egress: One roads in/out
Access Width: 1.5 lanes (>18ft)
Access Condition: Surfaced-paved, grade<5%
Bridge Condition: None/nonflammable,load limit will not limit response
Access & Turnarounds: Access is <300 ft from facility w/turnaround
Facility Number/Sign: Marked and clearly visible
Defensible Space: 100 ft treated
Fuel Load (w/in 300 ft): Moderate
Fuel Type (w/in 300ft): Shrub or timber
Topography (w/in 300ft): Slope 5% to 20%
Roof Material: Noncombustible or not applicable
Siding Material: Wood or open sided
Foundation: Closed, < 6in masonry exposed
Fences/Decks: None or noncombustible
Firewood: None
Propane Tanks: None
Water Supply: Pressurized hydrant(s) or fixed sprinkler system
Overhead Hazards: No overhead hazards
Safety Zones: No safety zone(s) in area
Additional Obstacles: None
Triage Category:
Hazmat:
Assessment Comments:



● Facility
■ NPS Boundary



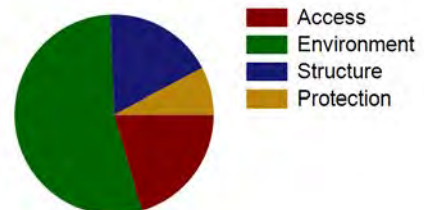
Score: 50
Rating: Moderate



Asset Priority Index (API):
88



Factors Driving the Ratings





NPS Wildand Fire Risk Assessment - Facility Assessment

For more information visit <https://wildfire-risk-assessments-nifc.hub.arcgis.com>

Facility: B-0992-N Kiosk Aspenglen Campground

Unit - Location: ROMO - North Entrance
FMSS ID: 25288
Field Crew: L Nelson
Last Site Visit Date: 1/29/2013

Rating: Moderate
Protection Level : Not Designated
Local ID: [Local_ID]
Lat(WGS84): 40° 24.0011' Long(WGS84): -105° 35.5975'

Recommended Treatments

Zone	Treatment Description	Pers Hours	Treatment Cycle	Treatment Priority	Treatment Status	Date Next Treatment Recommended	Equipment Description	Equip Qty
1	Roof and gutters should be cleared of vegetative debris -	3		Unknown	Planned		-	
	Limb trees 6 to 15 feet above ground -	3		Unknown	Planned		-	



NPS Wildand Fire Risk Assessment - Facility Assessment

For more information visit <https://wildfire-risk-assessments-nifc.hub.arcgis.com>

Facility: B-0992-N Kiosk Aspenglen Campground

Unit - Location: ROMO - North Entrance

FMSS ID: 25288

Field Crew: L Nelson

Last Site Visit Date: 1/29/2013

Rating: Moderate

Protection Level : Not Designated

Local ID: [Local_ID]

Lat(WGS84): 40° 24.0011' Long(WGS84): -105° 35.5975'

Recommended Tactics

Triage Category	Tactic Description	Pers Hours	Equipment Description	Equip Qty
	Remove flammable materials -	3.00	-	
	Engine on scene -	3.00	-	
	Fuels reduction -	3.00	-	



NPS Wildand Fire Risk Assessment - Facility Assessment

For more information visit <https://wildfire-risk-assessments-nifc.hub.arcgis.com>

Facility: B-0992-N Kiosk Aspenglen Campground

Unit - Location: ROMO - North Entrance
FMSS ID: 25288
Field Crew: L Nelson
Last Site Visit Date: 1/29/2013

Rating: Moderate
Protection Level : Not Designated
Local ID: [Local_ID]
Lat(WGS84): 40° 24.0011' Long(WGS84): -105° 35.5975'



2013_ROMO_25288_B-0992-N Kiosk Aspenglen Campground_D.jpg



2013_ROMO_25288_B-0992-N Kiosk Aspenglen Campground_C.jpg



2013_ROMO_25288_B-0992-N Kiosk Aspenglen Campground_B.jpg



2013_ROMO_25288_B-0992-N Kiosk Aspenglen Campground_A.jpg



NPS Wildand Fire Risk Assessment - Facility Assessment

For more information visit <https://wildfire-risk-assessments-nifc.hub.arcgis.com>

Facility: B-0168-H Bighorn Storage Shed

Unit - Location: ROMO - North Entrance
FMSS ID: 24044
Structure Type: Building
Structure Use: Other
Owner: NPS
Field Crew: L Nelson
Last Site Visit Date: 12/2/2013

Rating: Moderate
Protection Level : Full
Resources of Concern Present? Unknown
Occupied? No
Local ID: [Local_ID]
In a Community? Yes - Fall River Entrance
Lat(WGS84): 40° 24.322' **Long(WGS84):** -105° 35.5304'

Primary Access: Road
Ingress/Egress: Two or more roads in/out
Access Width: 2 lanes (>24ft)
Access Condition: Surfaced-paved, grade<5%
Bridge Condition: None/nonflammable,load limit will not limit response
Access & Turnarounds: Access is <300 ft from facility w/turnaround
Facility Number/Sign: Marked and clearly visible
Defensible Space: >100ft treated
Fuel Load (w/in 300 ft): Moderate
Fuel Type (w/in 300ft): Shrub or timber
Topography (w/in 300ft): Slope 5% to 20%
Roof Material: Combustible or no roof
Siding Material: Wood or open sided
Foundation: Closed, < 6in masonry exposed
Fences/Decks: None or noncombustible
Firewood: None
Propane Tanks:
Water Supply: Pressurized hydrant(s) or fixed sprinkler system
Overhead Hazards: No overhead hazards
Safety Zones: Potential safety zone(s) in area
Additional Obstacles: None
Triage Category:
Hazmat: Propane tanks in the area
Assessment Comments:



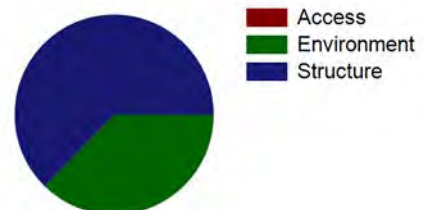
Score: 54
Rating: Moderate



Asset Priority Index (API):
73



Factors Driving the Ratings





NPS Wildand Fire Risk Assessment - Facility Assessment

For more information visit <https://wildfire-risk-assessments-nifc.hub.arcgis.com>

Facility: B-0168-H Bighorn Storage Shed

Unit - Location: ROMO - North Entrance
FMSS ID: 24044
Field Crew: L Nelson
Last Site Visit Date: 12/2/2013

Rating: Moderate
Protection Level : Full
Local ID: [Local_ID]
Lat(WGS84): 40° 24.322' Long(WGS84): -105° 35.5304'

Recommended Treatments

Zone	Treatment Description	Pers Hours	Treatment Cycle	Treatment Priority	Treatment Status	Date Next Treatment Recommended	Equipment Description	Equip Qty
1	Roof and gutters should be cleared of vegetative debris -	3		Unknown	Planned		-	



NPS Wildand Fire Risk Assessment - Facility Assessment

For more information visit <https://wildfire-risk-assessments-nifc.hub.arcgis.com>

Facility: B-0168-H Bighorn Storage Shed

Unit - Location: ROMO - North Entrance

FMSS ID: 24044

Field Crew: L Nelson

Last Site Visit Date: 12/2/2013

Rating: Moderate

Protection Level : Full

Local ID: [Local_ID]

Lat(WGS84): 40° 24.322' Long(WGS84): -105° 35.5304'

Recommended Tactics

Triage Category	Tactic Description	Pers Hours	Equipment Description	Equip Qty
	Engine on scene -	6.00	-	
	Handline -	40.00	-	
	Remove flammable materials -	3.00	-	
	Burnout, no line construction necessary -	20.00	-	



NPS Wildand Fire Risk Assessment - Facility Assessment

For more information visit <https://wildfire-risk-assessments-nifc.hub.arcgis.com>

Facility: B-0168-H Bighorn Storage Shed

Unit - Location: ROMO - North Entrance
FMSS ID: 24044
Field Crew: L Nelson
Last Site Visit Date: 12/2/2013

Rating: Moderate
Protection Level : Full
Local ID: [Local_ID]
Lat(WGS84): 40° 24.322' Long(WGS84): -105° 35.5304'



2013_ROMO_24044_B-0168-H Bighorn Storage Shed_D.jpg



2013_ROMO_24044_B-0168-H Bighorn Storage Shed_C.jpg



2013_ROMO_24044_B-0168-H Bighorn Storage Shed_B.jpg



2013_ROMO_24044_B-0168-H Bighorn Storage Shed_A.jpg



NPS Wildand Fire Risk Assessment - Facility Assessment

For more information visit <https://wildfire-risk-assessments-nifc.hub.arcgis.com>

Facility: **INHOLDER STRUCTURE**

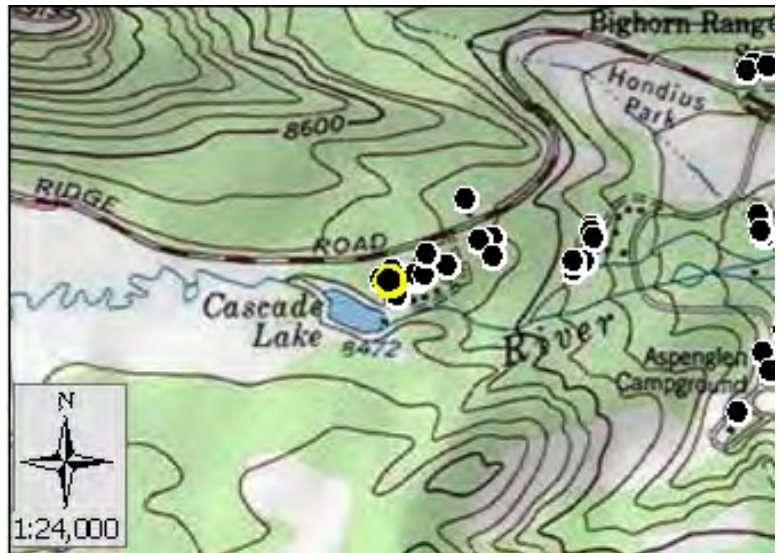
Unit - Location: ROMO - North Entrance
FMSS ID:
Structure Type: Building
Structure Use: Private
Owner: Private
Field Crew:
Last Site Visit Date:

Rating: PVTNotSurveyed
Protection Level : Not Designated
Resources of Concern Present? Unknown
Occupied?
Local ID: [Local_ID]
In a Community? Yes - Cascade Lake Aspenglen Inholder Structures
Lat(WGS84): 40° 24.0826' **Long(WGS84):** -105° 36.1558'

Primary Access: Road
Ingress/Egress: Two or more roads in/out
Access Width: 2 lanes (>24ft)
Access Condition: Surfaced-paved, grade<5%
Bridge Condition: None/nonflammable,load limit will not limit response
Access & Turnarounds: Access is <300 ft from facility w/turnaround
Facility Number/Sign: Marked and clearly visible
Defensible Space: >100ft treated
Fuel Load (w/in 300 ft): Moderate
Fuel Type (w/in 300ft): Grass,tundra,northern hardwood litter
Topography (w/in 300ft): Slope <5%
Roof Material:
Siding Material:
Foundation:
Fences/Decks:
Firewood:
Propane Tanks:
Water Supply: Pressurized hydrant(s) or fixed sprinkler system
Overhead Hazards: No overhead hazards
Safety Zones: Potential safety zone(s) in area
Additional Obstacles: None
Triage Category:
Hazmat:
Assessment Comments:



● Facility
■ NPS Boundary



Score:
Rating: PVTNotSurveyed



Asset Priority Index (API):
N/A



Factors Driving the Ratings



■ Access
■ Environment



NPS Wildand Fire Risk Assessment - Facility Assessment

For more information visit <https://wildfire-risk-assessments-nifc.hub.arcgis.com>

Facility: **INHOLDER STRUCTURE**

Unit - Location: ROMO - North Entrance
FMSS ID:
Structure Type: Building
Structure Use: Private
Owner: Private
Field Crew:
Last Site Visit Date:

Rating: PVTNotSurveyed
Protection Level : Not Designated
Resources of Concern Present? Unknown
Occupied?
Local ID: [Local_ID]
In a Community? Yes - Cascade Lake Aspenglen Inholder Structures
Lat(WGS84): 40° 24.1142' **Long(WGS84):** -105° 36.1015'

Primary Access: Road
Ingress/Egress: Two or more roads in/out
Access Width: 2 lanes (>24ft)
Access Condition: Surfaced-paved, grade<5%
Bridge Condition: None/nonflammable,load limit will not limit response
Access & Turnarounds: Access is <300 ft from facility w/turnaround
Facility Number/Sign: Marked and clearly visible
Defensible Space: >100ft treated
Fuel Load (w/in 300 ft): Moderate
Fuel Type (w/in 300ft): Grass,tundra,northern hardwood litter
Topography (w/in 300ft): Slope <5%
Roof Material:
Siding Material:
Foundation:
Fences/Decks:
Firewood:
Propane Tanks:
Water Supply: Pressurized hydrant(s) or fixed sprinkler system
Overhead Hazards: No overhead hazards
Safety Zones: Potential safety zone(s) in area
Additional Obstacles: None
Triage Category:
Hazmat:
Assessment Comments:



● Facility
■ NPS Boundary



Score:
Rating: PVTNotSurveyed



Asset Priority Index (API):
N/A



Factors Driving the Ratings



■ Access
■ Environment



NPS Wildand Fire Risk Assessment - Facility Assessment

For more information visit <https://wildfire-risk-assessments-nifc.hub.arcgis.com>

Facility: Q-M82250 S Trailer 00M82250

Unit - Location: ROMO - North Entrance
FMSS ID: 73790
Structure Type: Building
Structure Use: Residence
Owner: NPS
Field Crew: L Nelson
Last Site Visit Date: 12/2/2013

Rating: Low
Protection Level : Full
Resources of Concern Present? Unknown
Occupied? Yes
Local ID: [Local_ID]
In a Community? Yes - Fall River Entrance
Lat(WGS84): 40° 24.3264' **Long(WGS84):** -105° 35.5501'

Primary Access: Road
Ingress/Egress: Two or more roads in/out
Access Width: 2 lanes (>24ft)
Access Condition: Surfaced-paved, grade<5%
Bridge Condition: None/nonflammable,load limit will not limit response
Access & Turnarounds: Access is <300 ft from facility w/turnaround
Facility Number/Sign: None or not clearly visible
Defensible Space: >100ft treated
Fuel Load (w/in 300 ft): Moderate
Fuel Type (w/in 300ft): Shrub or timber
Topography (w/in 300ft): Slope 5% to 20%
Roof Material: Noncombustible or not applicable
Siding Material: Rock, concrete, metal
Foundation: Closed, < 6in masonry exposed
Fences/Decks: None or noncombustible
Firewood: None
Propane Tanks:
Water Supply: Pressurized hydrant(s) or fixed sprinkler system
Overhead Hazards: No overhead hazards
Safety Zones: Potential safety zone(s) in area
Additional Obstacles: None
Triage Category:
Hazmat: Propane tanks in the area
Assessment Comments:



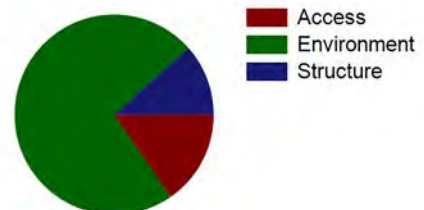
Score: 25
Rating: Low



Asset Priority Index (API):
62



Factors Driving the Ratings





NPS Wildand Fire Risk Assessment - Facility Assessment

For more information visit <https://wildfire-risk-assessments-nifc.hub.arcgis.com>

Facility: Q-M82250 S Trailer 00M82250

Unit - Location: ROMO - North Entrance

FMSS ID: 73790

Field Crew: L Nelson

Last Site Visit Date: 12/2/2013

Rating: Low

Protection Level : Full

Local ID: [Local_ID]

Lat(WGS84): 40° 24.3264' Long(WGS84): -105° 35.5501'

Recommended Tactics

Triage Category	Tactic Description	Pers Hours	Equipment Description	Equip Qty
	Burnout, no line construction necessary -	20.00	-	
	Handline -	20.00	-	



NPS Wildand Fire Risk Assessment - Facility Assessment

For more information visit <https://wildfire-risk-assessments-nifc.hub.arcgis.com>

Facility: Q-M82250 S Trailer 00M82250

Unit - Location: ROMO - North Entrance
FMSS ID: 73790
Field Crew: L Nelson
Last Site Visit Date: 12/2/2013

Rating: Low
Protection Level : Full
Local ID: [Local_ID]
Lat(WGS84): 40° 24.3264' Long(WGS84): -105° 35.5501'



ROMO_73790_S Trailer 00M82250 (A).JPG



2013_ROMO_73790_Q-M82250 S Trailer 00M82250_D.jpg



2013_ROMO_73790_Q-M82250 S Trailer 00M82250_C.jpg



2013_ROMO_73790_Q-M82250 S Trailer 00M82250_B.jpg



NPS Wildand Fire Risk Assessment - Facility Assessment

For more information visit <https://wildfire-risk-assessments-nifc.hub.arcgis.com>

Facility: B-0688-N Pumphouse, Smith Sisters (Aspenglen)

Unit - Location: ROMO - North Entrance
FMSS ID: 98014
Structure Type: Building
Structure Use: Admin
Owner: NPS
Field Crew: L Nelson
Last Site Visit Date: 12/2/2013

Rating: Low
Protection Level : Full
Resources of Concern Present? Unknown
Occupied? No
Local ID: [Local_ID]
In a Community? Yes - Fall River Entrance
Lat(WGS84): 40° 24.2072' Long(WGS84): -105° 35.5411'

Primary Access: Road
Ingress/Egress: Two or more roads in/out
Access Width: 2 lanes (>24ft)
Access Condition: Surfaced-paved, grade<5%
Bridge Condition: None/nonflammable,load limit will not limit response
Access & Turnarounds: Access is <300 ft from facility w/turnaround
Facility Number/Sign: None or not clearly visible
Defensible Space: 30 ft treated
Fuel Load (w/in 300 ft): Moderate
Fuel Type (w/in 300ft): Shrub or timber
Topography (w/in 300ft): Slope 5% to 20%
Roof Material: Noncombustible or not applicable
Siding Material: Wood or open sided
Foundation: Closed, < 6in masonry exposed
Fences/Decks: None or noncombustible
Firewood: None
Propane Tanks:
Water Supply: Pressurized hydrant(s) or fixed sprinkler system
Overhead Hazards: No overhead hazards
Safety Zones: Potential safety zone(s) in area
Additional Obstacles: None
Triage Category:
Hazmat:
Assessment Comments:



● Facility
■ NPS Boundary



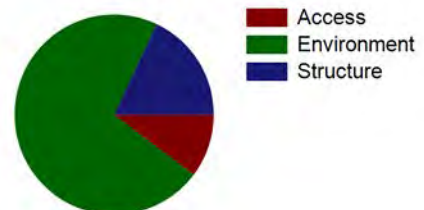
Score: 38
Rating: Low



Asset Priority Index (API):
88



Factors Driving the Ratings





NPS Wildand Fire Risk Assessment - Facility Assessment

For more information visit <https://wildfire-risk-assessments-nifc.hub.arcgis.com>

Facility: B-0688-N Pumphouse, Smith Sisters (Aspenglen)

Unit - Location: ROMO - North Entrance
FMSS ID: 98014
Field Crew: L Nelson
Last Site Visit Date: 12/2/2013

Rating: Low
Protection Level : Full
Local ID: [Local_ID]
Lat(WGS84): 40° 24.2072' Long(WGS84): -105° 35.5411'

Recommended Treatments

Zone	Treatment Description	Pers Hours	Treatment Cycle	Treatment Priority	Treatment Status	Date Next Treatment Recommended	Equipment Description	Equip Qty
1	Flammable ground cover such as leaf litter, woody debris or highly flammable vegetation should be removed -	3		Unknown	Planned		-	
2	Flammable ground cover should be removed or isolated -	3		Unknown	Planned		-	



NPS Wildand Fire Risk Assessment - Facility Assessment

For more information visit <https://wildfire-risk-assessments-nifc.hub.arcgis.com>

Facility: B-0688-N Pumphouse, Smith Sisters (Aspenglen)

Unit - Location: ROMO - North Entrance

FMSS ID: 98014

Field Crew: L Nelson

Last Site Visit Date: 12/2/2013

Rating: Low

Protection Level : Full

Local ID: [Local_ID]

Lat(WGS84): 40° 24.2072' Long(WGS84): -105° 35.5411'

Recommended Tactics

Triage Category	Tactic Description	Pers Hours	Equipment Description	Equip Qty
	Fuels reduction -	3.00	-	
	Engine on scene -	3.00	-	
	Handline -	3.00	-	



NPS Wildand Fire Risk Assessment - Facility Assessment

For more information visit <https://wildfire-risk-assessments-nifc.hub.arcgis.com>

Facility: B-0688-N Pumphouse, Smith Sisters (Aspenglen)

Unit - Location: ROMO - North Entrance
FMSS ID: 98014
Field Crew: L Nelson
Last Site Visit Date: 12/2/2013

Rating: Low
Protection Level : Full
Local ID: [Local_ID]
Lat(WGS84): 40° 24.2072' Long(WGS84): -105° 35.5411'



2013_ROMO_98014_B-0688-N Pumphouse, Smith Sisters (Aspenglen)_D.jpg



2013_ROMO_98014_B-0688-N Pumphouse, Smith Sisters (Aspenglen)_C.jpg



2013_ROMO_98014_B-0688-N Pumphouse, Smith Sisters (Aspenglen)_B.jpg



2013_ROMO_98014_B-0688-N Pumphouse, Smith Sisters (Aspenglen)_A.jpg



NPS Wildand Fire Risk Assessment - Facility Assessment

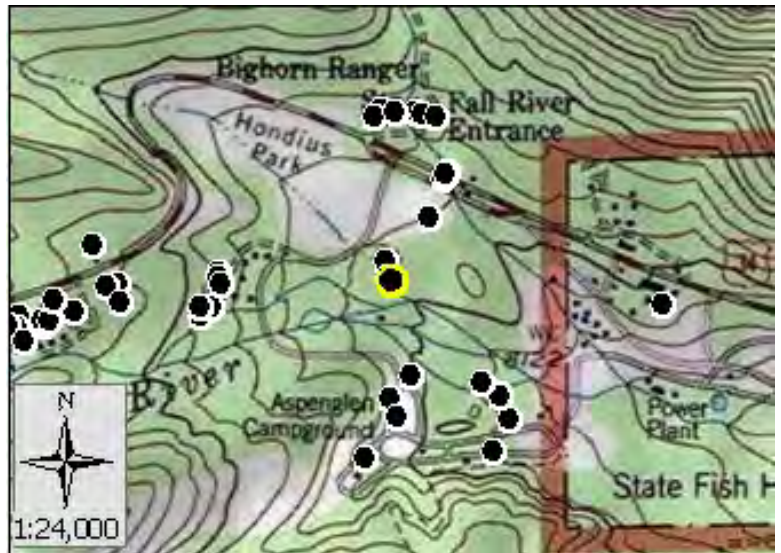
For more information visit <https://wildfire-risk-assessments-nifc.hub.arcgis.com>

Facility: Q-0748-N S 1 Bdrm House by AGCG 00000748

Unit - Location: ROMO - North Entrance
FMSS ID: 24065
Structure Type: Building
Structure Use: Admin
Owner: NPS
Field Crew: L Nelson
Last Site Visit Date: 1/30/2013

Rating: High
Protection Level : Not Designated
Resources of Concern Present? Unknown
Occupied?
Local ID: [Local_ID]
In a Community? Yes - Fall River Entrance
Lat(WGS84): 40° 24.1348' **Long(WGS84):** -105° 35.5966'

Primary Access: Road
Ingress/Egress: One roads in/out
Access Width: 1 lane (<18ft)
Access Condition: Non-surfaced- gravel,dirt,grade>5%
Bridge Condition: None/nonflammable,load limit will not limit response
Access & Turnarounds: Access is >300ft from facility w/o turnaround
Facility Number/Sign: Marked and clearly visible
Defensible Space: 30 ft treated
Fuel Load (w/in 300 ft): Moderate
Fuel Type (w/in 300ft): Shrub or timber
Topography (w/in 300ft): Slope <5%
Roof Material: Noncombustible or not applicable
Siding Material: Wood or open sided
Foundation: Closed, 6in to 30in masonry exposed
Fences/Decks: None or noncombustible
Firewood: 5ft to 30ft from facility
Propane Tanks: None
Water Supply: Reliable water source nearby
Overhead Hazards: No overhead hazards
Safety Zones: No safety zone(s) in area
Additional Obstacles: None
Triage Category:
Hazmat:
Assessment Comments:



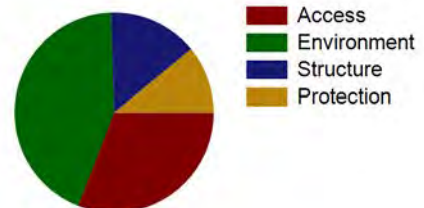
Score: 35
Rating: High



Asset Priority Index (API):
62



Factors Driving the Ratings





NPS Wildand Fire Risk Assessment - Facility Assessment

For more information visit <https://wildfire-risk-assessments-nifc.hub.arcgis.com>

Facility: Q-0748-N S 1 Bdrm House by AGCG 00000748

Unit - Location: ROMO - North Entrance
FMSS ID: 24065
Field Crew: L Nelson
Last Site Visit Date: 1/30/2013

Rating: High
Protection Level : Not Designated
Local ID: [Local_ID]
Lat(WGS84): 40° 24.1348' Long(WGS84): -105° 35.5966'

Recommended Treatments

Zone	Treatment Description	Pers Hours	Treatment Cycle	Treatment Priority	Treatment Status	Date Next Treatment Recommended	Equipment Description	Equip Qty
1	Firewood should be moved at least 50 ft from the facility and 15 horizontal feet from tree canopies -	3		Unknown	Planned		-	
	Limb trees 6 to 15 feet above ground -	3		Unknown	Planned		-	
	Flammable ground cover such as leaf litter, woody debris or highly flammable vegetation should be removed -	3		Unknown	Planned		-	
2	Flammable ground cover should be removed or isolated -	3		Unknown	Planned		-	



NPS Wildand Fire Risk Assessment - Facility Assessment

For more information visit <https://wildfire-risk-assessments-nifc.hub.arcgis.com>

Facility: Q-0748-N S 1 Bdrm House by AGCG 00000748

Unit - Location: ROMO - North Entrance

FMSS ID: 24065

Field Crew: L Nelson

Last Site Visit Date: 1/30/2013

Rating: High

Protection Level : Not Designated

Local ID: [Local_ID]

Lat(WGS84): 40° 24.1348' Long(WGS84): -105° 35.5966'

Recommended Tactics

Triage Category	Tactic Description	Pers Hours	Equipment Description	Equip Qty
	Remove flammable materials -	3.00	-	
	Handline -	3.00	-	
	Fuels reduction -	3.00	-	
	Install sprinkler system -	3.00	-	



NPS Wildand Fire Risk Assessment - Facility Assessment

For more information visit <https://wildfire-risk-assessments-nifc.hub.arcgis.com>

Facility: Q-0748-N S 1 Bdrm House by AGCG 00000748

Unit - Location: ROMO - North Entrance
FMSS ID: 24065
Field Crew: L Nelson
Last Site Visit Date: 1/30/2013

Rating: High
Protection Level : Not Designated
Local ID: [Local_ID]
Lat(WGS84): 40° 24.1348' Long(WGS84): -105° 35.5966'



2013_ROMO_24065_Q-0748-N S 1 Bdrm House by AGCG 00000748_D.jpg



2013_ROMO_24065_Q-0748-N S 1 Bdrm House by AGCG 00000748_C.jpg



2013_ROMO_24065_Q-0748-N S 1 Bdrm House by AGCG 00000748_B.jpg



2013_ROMO_24065_Q-0748-N S 1 Bdrm House by AGCG 00000748_A.jpg



NPS Wildand Fire Risk Assessment - Facility Assessment

For more information visit <https://wildfire-risk-assessments-nifc.hub.arcgis.com>

Facility: B-0044-H Bighorn Ranger Station

Unit - Location: ROMO - North Entrance

FMSS ID: 24041

Structure Type: Building

Structure Use: Admin

Owner: NPS

Field Crew: L Nelson

Last Site Visit Date: 12/2/2013

Rating: Moderate

Protection Level : Full

Resources of Concern Present? Unknown

Occupied? Yes

Local ID: [Local_ID]

In a Community? Yes - Fall River Entrance

Lat(WGS84): 40° 24.3308' Long(WGS84): -105° 35.6123'

Primary Access: Road

Ingress/Egress: Two or more roads in/out

Access Width: 2 lanes (>24ft)

Access Condition: Surfaced-paved, grade<5%

Bridge Condition: None/nonflammable,load limit will not limit response

Access & Turnarounds: Access is <300 ft from facility w/turnaround

Facility Number/Sign: Marked and clearly visible

Defensible Space: >100ft treated

Fuel Load (w/in 300 ft): Moderate

Fuel Type (w/in 300ft): Shrub or timber

Topography (w/in 300ft): Slope 5% to 20%

Roof Material: Combustible or no roof

Siding Material: Wood or open sided

Foundation: Closed, 6in to 30in masonry exposed

Fences/Decks: None or noncombustible

Firewood: None

Propane Tanks:

Water Supply: Pressurized hydrant(s) or fixed sprinkler system

Overhead Hazards: No overhead hazards

Safety Zones: Potential safety zone(s) in area

Additional Obstacles: None

Triage Category:

Hazmat: Propane tanks in the area

Assessment Comments:



● Facility
■ NPS Boundary



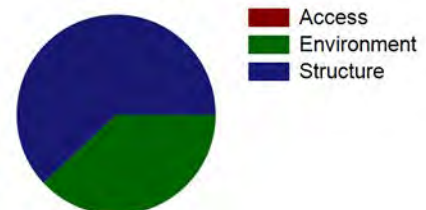
Score: 53
Rating: Moderate



Asset Priority Index (API):
61



Factors Driving the Ratings





NPS Wildand Fire Risk Assessment - Facility Assessment

For more information visit <https://wildfire-risk-assessments-nifc.hub.arcgis.com>

Facility: B-0044-H Bighorn Ranger Station

Unit - Location: ROMO - North Entrance
FMSS ID: 24041
Field Crew: L Nelson
Last Site Visit Date: 12/2/2013

Rating: Moderate
Protection Level : Full
Local ID: [Local_ID]
Lat(WGS84): 40° 24.3308' Long(WGS84): -105° 35.6123'

Recommended Treatments

Zone	Treatment Description	Pers Hours	Treatment Cycle	Treatment Priority	Treatment Status	Date Next Treatment Recommended	Equipment Description	Equip Qty
1	Roof and gutters should be cleared of vegetative debris -	3		Unknown	Planned		-	



NPS Wildand Fire Risk Assessment - Facility Assessment

For more information visit <https://wildfire-risk-assessments-nifc.hub.arcgis.com>

Facility: B-0044-H Bighorn Ranger Station

Unit - Location: ROMO - North Entrance

FMSS ID: 24041

Field Crew: L Nelson

Last Site Visit Date: 12/2/2013

Rating: Moderate

Protection Level : Full

Local ID: [Local_ID]

Lat(WGS84): 40° 24.3308' Long(WGS84): -105° 35.6123'

Recommended Tactics

Triage Category	Tactic Description	Pers Hours	Equipment Description	Equip Qty
	Handline -	40.00	-	
	Engine on scene -	6.00	-	
	Burnout, no line construction necessary -	20.00	-	



NPS Wildand Fire Risk Assessment - Facility Assessment

For more information visit <https://wildfire-risk-assessments-nifc.hub.arcgis.com>

Facility: B-0044-H Bighorn Ranger Station

Unit - Location: ROMO - North Entrance
FMSS ID: 24041
Field Crew: L Nelson
Last Site Visit Date: 12/2/2013

Rating: Moderate
Protection Level : Full
Local ID: [Local_ID]
Lat(WGS84): 40° 24.3308' Long(WGS84): -105° 35.6123'



ROMO_24041_Bighorn Ranger Station (B).JPG



ROMO_24041_Bighorn Ranger Station (A).JPG



2013_ROMO_24041_B-0044-H Bighorn Ranger Station_D.jpg



2013_ROMO_24041_B-0044-H Bighorn Ranger Station_C.jpg



NPS Wildand Fire Risk Assessment - Facility Assessment

For more information visit <https://wildfire-risk-assessments-nifc.hub.arcgis.com>

Facility: **INHOLDER PROPANE TANK**

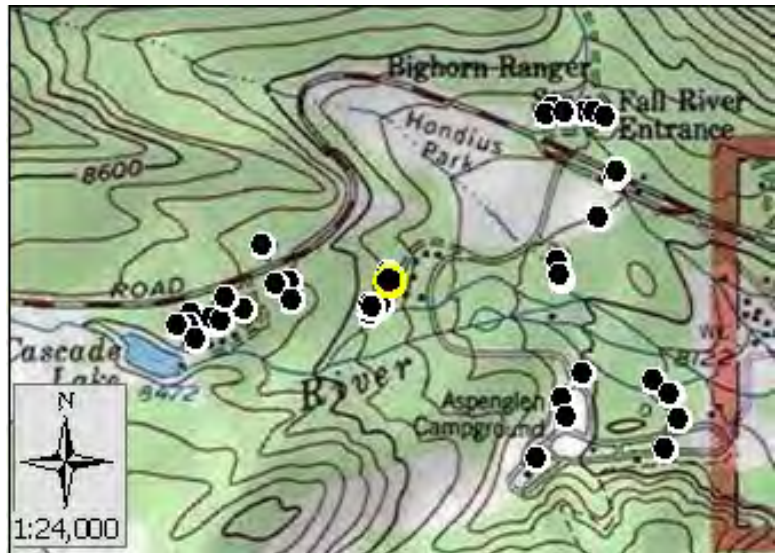
Unit - Location: ROMO - North Entrance
FMSS ID:
Structure Type: Building
Structure Use: Private
Owner: Private
Field Crew:
Last Site Visit Date:

Rating: PVTNotSurveyed
Protection Level : Not Designated
Resources of Concern Present? Unknown
Occupied?
Local ID: [Local_ID]
In a Community? Yes - Cascade Lake Aspenglen Inholder Structures
Lat(WGS84): 40° 24.1332' **Long(WGS84):** -105° 35.8525'

Primary Access: Road
Ingress/Egress: Two or more roads in/out
Access Width: 2 lanes (>24ft)
Access Condition: Surfaced-paved, grade<5%
Bridge Condition: None/nonflammable,load limit will not limit response
Access & Turnarounds: Access is <300 ft from facility w/turnaround
Facility Number/Sign: Marked and clearly visible
Defensible Space: >100ft treated
Fuel Load (w/in 300 ft): Moderate
Fuel Type (w/in 300ft): Grass,tundra,northern hardwood litter
Topography (w/in 300ft): Slope <5%
Roof Material:
Siding Material:
Foundation:
Fences/Decks:
Firewood:
Propane Tanks:
Water Supply: Pressurized hydrant(s) or fixed sprinkler system
Overhead Hazards: No overhead hazards
Safety Zones: Potential safety zone(s) in area
Additional Obstacles: None
Triage Category:
Hazmat:
Assessment Comments:



● Facility
■ NPS Boundary



Score:
Rating: PVTNotSurveyed



Asset Priority Index (API):
N/A



Factors Driving the Ratings



■ Access
■ Environment



NPS Wildand Fire Risk Assessment - Facility Assessment

For more information visit <https://wildfire-risk-assessments-nifc.hub.arcgis.com>

Facility: **INHOLDER STRUCTURE**

Unit - Location: ROMO - North Entrance

FMSS ID:

Structure Type: Building

Structure Use: Private

Owner: Private

Field Crew:

Last Site Visit Date:

Rating: PVTNotSurveyed

Protection Level : Not Designated

Resources of Concern Present? Unknown

Occupied?

Local ID: [Local_ID]

In a Community? Yes - Cascade Lake Aspenglen Inholder Structures

Lat(WGS84): 40° 24.1329' **Long(WGS84):** -105° 36.0048'

Primary Access: Road

Ingress/Egress: Two or more roads in/out

Access Width: 2 lanes (>24ft)

Access Condition: Surfaced-paved, grade<5%

Bridge Condition: None/nonflammable,load limit will not limit response

Access & Turnarounds: Access is <300 ft from facility w/turnaround

Facility Number/Sign: Marked and clearly visible

Defensible Space: >100ft treated

Fuel Load (w/in 300 ft): Moderate

Fuel Type (w/in 300ft): Grass,tundra,northern hardwood litter

Topography (w/in 300ft): Slope <5%

Roof Material:

Siding Material:

Foundation:

Fences/Decks:

Firewood:

Propane Tanks:

Water Supply: Pressurized hydrant(s) or fixed sprinkler system

Overhead Hazards: No overhead hazards

Safety Zones: Potential safety zone(s) in area

Additional Obstacles: None

Triage Category:

Hazmat:

Assessment Comments:



● Facility
■ NPS Boundary



Score:
Rating: PVTNotSurveyed



Asset Priority Index (API):
N/A



Factors Driving the Ratings



■ Access
■ Environment



NPS Wildand Fire Risk Assessment - Facility Assessment

For more information visit <https://wildfire-risk-assessments-nifc.hub.arcgis.com>

Facility: **INHOLDER STRUCTURE**

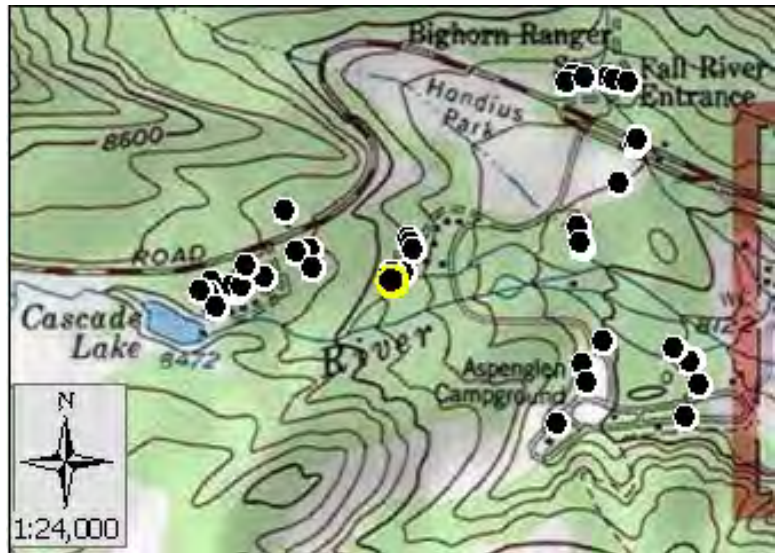
Unit - Location: ROMO - North Entrance
FMSS ID:
Structure Type: Building
Structure Use: Private
Owner: Private
Field Crew:
Last Site Visit Date:

Rating: PVTNotSurveyed
Protection Level : Not Designated
Resources of Concern Present? Unknown
Occupied?
Local ID: [Local_ID]
In a Community? Yes - Cascade Lake Aspenglen Inholder Structures
Lat(WGS84): 40° 24.0957' **Long(WGS84):** -105° 35.8839'

Primary Access: Road
Ingress/Egress: Two or more roads in/out
Access Width: 2 lanes (>24ft)
Access Condition: Surfaced-paved, grade<5%
Bridge Condition: None/nonflammable,load limit will not limit response
Access & Turnarounds: Access is <300 ft from facility w/turnaround
Facility Number/Sign: Marked and clearly visible
Defensible Space: >100ft treated
Fuel Load (w/in 300 ft): Moderate
Fuel Type (w/in 300ft): Grass,tundra,northern hardwood litter
Topography (w/in 300ft): Slope <5%
Roof Material:
Siding Material:
Foundation:
Fences/Decks:
Firewood:
Propane Tanks:
Water Supply: Pressurized hydrant(s) or fixed sprinkler system
Overhead Hazards: No overhead hazards
Safety Zones: Potential safety zone(s) in area
Additional Obstacles: None
Triage Category:
Hazmat:
Assessment Comments:



● Facility
■ NPS Boundary



Score:
Rating: PVTNotSurveyed



Asset Priority Index (API):
N/A



Factors Driving the Ratings



■ Access
■ Environment



NPS Wildand Fire Risk Assessment - Facility Assessment

For more information visit <https://wildfire-risk-assessments-nifc.hub.arcgis.com>

Facility: B-0952-N Hose House

Unit - Location: ROMO - North Entrance

FMSS ID: 24075

Structure Type: Building

Structure Use: Admin

Owner: NPS

Field Crew: L Nelson

Last Site Visit Date: 12/2/2013

Rating: Moderate

Protection Level : Full

Resources of Concern Present? Unknown

Occupied? Yes

Local ID: [Local_ID]

In a Community? Yes - Fall River Entrance

Lat(WGS84): 40° 24.3233' Long(WGS84): -105° 35.6226'

Primary Access: Road

Ingress/Egress: Two or more roads in/out

Access Width: 2 lanes (>24ft)

Access Condition: Surfaced-paved, grade<5%

Bridge Condition: None/nonflammable,load limit will not limit response

Access & Turnarounds: Access is <300 ft from facility w/turnaround

Facility Number/Sign: None or not clearly visible

Defensible Space: >100ft treated

Fuel Load (w/in 300 ft): Moderate

Fuel Type (w/in 300ft): Shrub or timber

Topography (w/in 300ft): Slope 5% to 20%

Roof Material: Combustible or no roof

Siding Material: Wood or open sided

Foundation: Closed, < 6in masonry exposed

Fences/Decks: None or noncombustible

Firewood: None

Propane Tanks:

Water Supply: Pressurized hydrant(s) or fixed sprinkler system

Overhead Hazards: No overhead hazards

Safety Zones: Potential safety zone(s) in area

Additional Obstacles: None

Triage Category:

Hazmat: Propane tanks in the area.

Assessment Comments:



● Facility
■ NPS Boundary



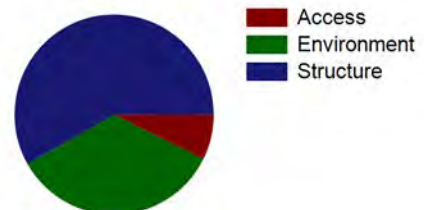
Score: 54
Rating: Moderate



Asset Priority Index (API):
7



Factors Driving the Ratings





NPS Wildand Fire Risk Assessment - Facility Assessment

For more information visit <https://wildfire-risk-assessments-nifc.hub.arcgis.com>

Facility: B-0952-N Hose House

Unit - Location: ROMO - North Entrance
FMSS ID: 24075
Field Crew: L Nelson
Last Site Visit Date: 12/2/2013

Rating: Moderate
Protection Level : Full
Local ID: [Local_ID]
Lat(WGS84): 40° 24.3233' Long(WGS84): -105° 35.6226'

Recommended Treatments

Zone	Treatment Description	Pers Hours	Treatment Cycle	Treatment Priority	Treatment Status	Date Next Treatment Recommended	Equipment Description	Equip Qty
1	Limb trees 6 to 15 feet above ground -	3		Unknown	Planned		-	



NPS Wildand Fire Risk Assessment - Facility Assessment

For more information visit <https://wildfire-risk-assessments-nifc.hub.arcgis.com>

Facility: B-0952-N Hose House

Unit - Location: ROMO - North Entrance

FMSS ID: 24075

Field Crew: L Nelson

Last Site Visit Date: 12/2/2013

Rating: Moderate

Protection Level : Full

Local ID: [Local_ID]

Lat(WGS84): 40° 24.3233' Long(WGS84): -105° 35.6226'

Recommended Tactics

Triage Category	Tactic Description	Pers Hours	Equipment Description	Equip Qty
	Burnout, no line construction necessary -	20.00	-	
	Handline -	40.00	-	
	Engine on scene -	6.00	-	



NPS Wildand Fire Risk Assessment - Facility Assessment

For more information visit <https://wildfire-risk-assessments-nifc.hub.arcgis.com>

Facility: B-0952-N Hose House

Unit - Location: ROMO - North Entrance
FMSS ID: 24075
Field Crew: L Nelson
Last Site Visit Date: 12/2/2013

Rating: Moderate
Protection Level : Full
Local ID: [Local_ID]
Lat(WGS84): 40° 24.3233' Long(WGS84): -105° 35.6226'



ROMO_24075_Hose House Bighorn (C).JPG



2013_ROMO_24075_B-0952-N Hose House_D.jpg



2013_ROMO_24075_B-0952-N Hose House_B.jpg



2013_ROMO_24075_B-0952-N Hose House_A.jpg



NPS Wildand Fire Risk Assessment - Facility Assessment

For more information visit <https://wildfire-risk-assessments-nifc.hub.arcgis.com>

Facility: Q-0743-H S Seasonal Quarters (Sterling) 00000743

Unit - Location: ROMO - North Entrance
FMSS ID: 24058
Structure Type: Building
Structure Use: Residence
Owner: NPS
Field Crew: L Nelson
Last Site Visit Date: 12/2/2013

Rating: Low
Protection Level : Full
Resources of Concern Present? Unknown
Occupied? Yes
Local ID: [Local_ID]
In a Community? Yes - Cascade Lake Aspenglen Inholder Structures
Lat(WGS84): 40° 24.1759' **Long(WGS84):** -105° 36.0451'

Primary Access: Road
Ingress/Egress: Two or more roads in/out
Access Width: 1 lane (<18ft)
Access Condition: Surfaced-paved, grade>5%
Bridge Condition: None/nonflammable,load limit will not limit response
Access & Turnarounds: Access is <300 ft from facility w/turnaround
Facility Number/Sign: Marked and clearly visible
Defensible Space: >100ft treated
Fuel Load (w/in 300 ft): Moderate
Fuel Type (w/in 300ft): Shrub or timber
Topography (w/in 300ft): Slope 5% to 20%
Roof Material: Noncombustible or not applicable
Siding Material: Wood or open sided
Foundation: Closed, < 6in masonry exposed
Fences/Decks: None or noncombustible
Firewood: None
Propane Tanks: Present and fuels clearance
Water Supply: No reliable water source nearby
Overhead Hazards: No overhead hazards
Safety Zones: No safety zone(s) in area
Additional Obstacles: None
Triage Category:
Hazmat: Propane tanks
Assessment Comments:



● Facility
■ NPS Boundary



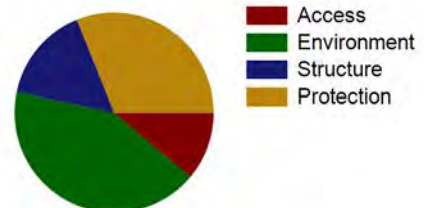
Score: 26
Rating: Low



Asset Priority Index (API):
56



Factors Driving the Ratings





NPS Wildand Fire Risk Assessment - Facility Assessment

For more information visit <https://wildfire-risk-assessments-nifc.hub.arcgis.com>

Facility: Q-0743-H S Seasonal Quarters (Sterling) 00000743

Unit - Location: ROMO - North Entrance
FMSS ID: 24058
Field Crew: L Nelson
Last Site Visit Date: 12/2/2013

Rating: Low
Protection Level : Full
Local ID: [Local_ID]
Lat(WGS84): 40° 24.1759' Long(WGS84): -105° 36.0451'

Recommended Treatments

Zone	Treatment Description	Pers Hours	Treatment Cycle	Treatment Priority	Treatment Status	Date Next Treatment Recommended	Equipment Description	Equip Qty
1	Clear adjacent and overhanging fuels to create 10 feet spacing between canopy and structure or chimney openings -	3		Unknown	Planned		-	



NPS Wildand Fire Risk Assessment - Facility Assessment

For more information visit <https://wildfire-risk-assessments-nifc.hub.arcgis.com>

Facility: Q-0743-H S Seasonal Quarters (Sterling) 00000743

Unit - Location: ROMO - North Entrance

FMSS ID: 24058

Field Crew: L Nelson

Last Site Visit Date: 12/2/2013

Rating: Low

Protection Level : Full

Local ID: [Local_ID]

Lat(WGS84): 40° 24.1759' Long(WGS84): -105° 36.0451'

Recommended Tactics

Triage Category	Tactic Description	Pers Hours	Equipment Description	Equip Qty
	Handline -	3.00	-	
	Engine on scene -	3.00	-	
	Fuels reduction -	3.00	-	



NPS Wildand Fire Risk Assessment - Facility Assessment

For more information visit <https://wildfire-risk-assessments-nifc.hub.arcgis.com>

Facility: Q-0743-H S Seasonal Quarters (Sterling) 00000743

Unit - Location: ROMO - North Entrance
FMSS ID: 24058
Field Crew: L Nelson
Last Site Visit Date: 12/2/2013

Rating: Low
Protection Level : Full
Local ID: [Local_ID]
Lat(WGS84): 40° 24.1759' Long(WGS84): -105° 36.0451'



2013_ROMO_24058_Q-0743-H S Seasonal Quarters (Sterling) 00000743_D.jpg



2013_ROMO_24058_Q-0743-H S Seasonal Quarters (Sterling) 00000743_C.jpg



2013_ROMO_24058_Q-0743-H S Seasonal Quarters (Sterling) 00000743_B.jpg



2013_ROMO_24058_Q-0743-H S Seasonal Quarters (Sterling) 00000743_A.jpg



NPS Wildand Fire Risk Assessment - Facility Assessment

For more information visit <https://wildfire-risk-assessments-nifc.hub.arcgis.com>

Facility: **INHOLDER STRUCTURE**

Unit - Location: ROMO - North Entrance

FMSS ID:

Structure Type: Building

Structure Use: Private

Owner: Private

Field Crew:

Last Site Visit Date:

Rating: PVTNotSurveyed

Protection Level : Not Designated

Resources of Concern Present? Unknown

Occupied?

Local ID: [Local_ID]

In a Community? Yes - Cascade Lake Aspenglen Inholder Structures

Lat(WGS84): 40° 24.0899' **Long(WGS84):** -105° 36.1077'

Primary Access: Road

Ingress/Egress: Two or more roads in/out

Access Width: 2 lanes (>24ft)

Access Condition: Surfaced-paved, grade<5%

Bridge Condition: None/nonflammable,load limit will not limit response

Access & Turnarounds: Access is <300 ft from facility w/turnaround

Facility Number/Sign: Marked and clearly visible

Defensible Space: >100ft treated

Fuel Load (w/in 300 ft): Moderate

Fuel Type (w/in 300ft): Grass,tundra,northern hardwood litter

Topography (w/in 300ft): Slope <5%

Roof Material:

Siding Material:

Foundation:

Fences/Decks:

Firewood:

Propane Tanks:

Water Supply: Pressurized hydrant(s) or fixed sprinkler system

Overhead Hazards: No overhead hazards

Safety Zones: Potential safety zone(s) in area

Additional Obstacles: None

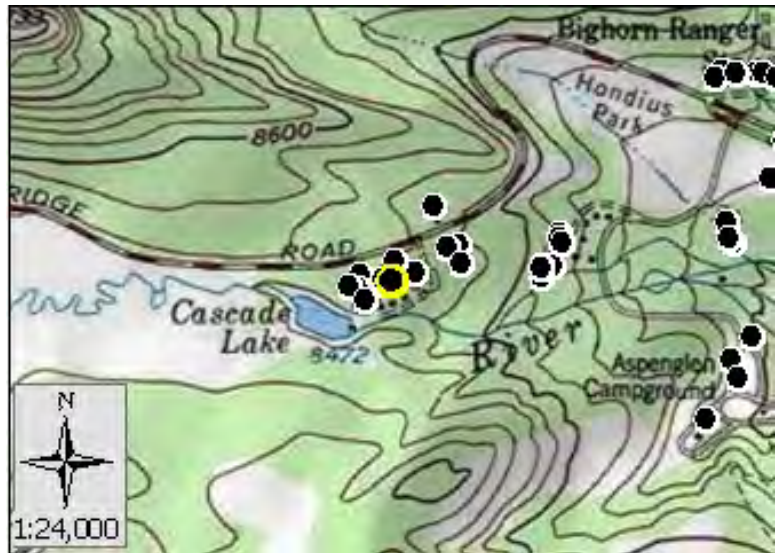
Triage Category:

Hazmat:

Assessment Comments:



● Facility
■ NPS Boundary



Score:
Rating: PVTNotSurveyed



Asset Priority Index (API):
N/A



Factors Driving the Ratings



■ Access
■ Environment



NPS Wildand Fire Risk Assessment - Facility Assessment

For more information visit <https://wildfire-risk-assessments-nifc.hub.arcgis.com>

Facility: Firewood Sales Bldg Aspenglen Campground

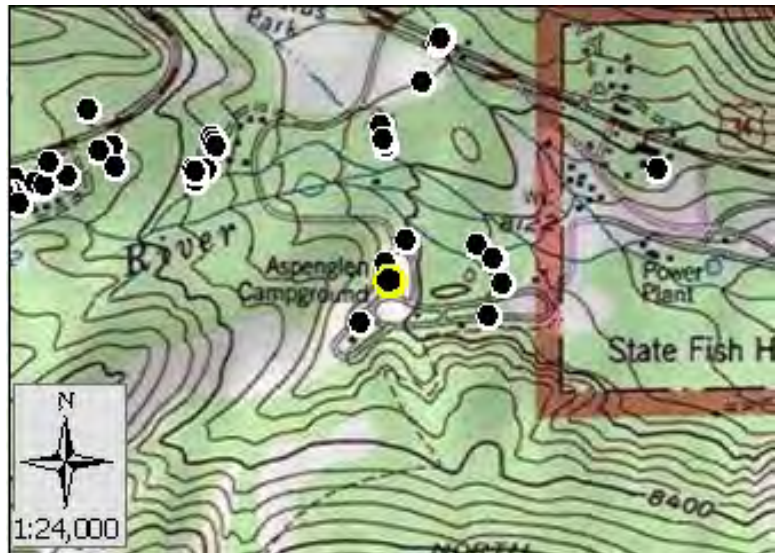
Unit - Location: ROMO - North Entrance
FMSS ID: Firewood Sales Bldg Aspenglen Campground
Structure Type: Building
Structure Use: Unknown
Owner: NPS
Field Crew: L Nelson
Last Site Visit Date: 1/29/2013

Rating: Moderate
Protection Level : Not Designated
Resources of Concern Present? Unknown
Occupied?
Local ID: [Local_ID]
In a Community? Yes - Aspenglen Campground
Lat(WGS84): 40° 23.9796' **Long(WGS84):** -105° 35.589'

Primary Access: Road
Ingress/Egress: One roads in/out
Access Width: 1.5 lanes (>18ft)
Access Condition: Surfaced-paved, grade<5%
Bridge Condition: None/nonflammable,load limit will not limit response
Access & Turnarounds: Access is <300 ft from facility w/turnaround
Facility Number/Sign: None or not clearly visible
Defensible Space: 100 ft treated
Fuel Load (w/in 300 ft): Light
Fuel Type (w/in 300ft): Shrub or timber
Topography (w/in 300ft): Slope 5% to 20%
Roof Material: Combustible or no roof
Siding Material: Wood or open sided
Foundation: Closed, < 6in masonry exposed
Fences/Decks: None or noncombustible
Firewood: None
Propane Tanks: None
Water Supply: Pressurized hydrant(s) or fixed sprinkler system
Overhead Hazards: No overhead hazards
Safety Zones: No safety zone(s) in area
Additional Obstacles: None
Triage Category:
Hazmat:
Assessment Comments:



● Facility
■ NPS Boundary



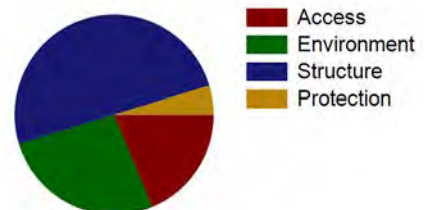
Score: 62
Rating: Moderate



Asset Priority Index (API):
N/A



Factors Driving the Ratings





NPS Wildand Fire Risk Assessment - Facility Assessment

For more information visit <https://wildfire-risk-assessments-nifc.hub.arcgis.com>

Facility: Firewood Sales Bldg Aspenglen Campground

Unit - Location: ROMO - North Entrance
FMSS ID: Firewood Sales Bldg Aspenglen Campground
Field Crew: L Nelson
Last Site Visit Date: 1/29/2013

Rating: Moderate
Protection Level : Not Designated
Local ID: [Local_ID]
Lat(WGS84): 40° 23.9796' Long(WGS84): -105° 35.589'

Recommended Treatments

Zone	Treatment Description	Pers Hours	Treatment Cycle	Treatment Priority	Treatment Status	Date Next Treatment Recommended	Equipment Description	Equip Qty
1	Limb trees 6 to 15 feet above ground -	3		Unknown	Planned		-	
2	Flammable ground cover should be removed or isolated -	3		Unknown	Planned		-	



NPS Wildand Fire Risk Assessment - Facility Assessment

For more information visit <https://wildfire-risk-assessments-nifc.hub.arcgis.com>

Facility: Firewood Sales Bldg Aspenglen Campground

Unit - Location: ROMO - North Entrance
FMSS ID: Firewood Sales Bldg Aspenglen Campground
Field Crew: L Nelson
Last Site Visit Date: 1/29/2013

Rating: Moderate
Protection Level : Not Designated
Local ID: [Local_ID]
Lat(WGS84): 40° 23.9796' Long(WGS84): -105° 35.589'

Recommended Tactics

Triage Category	Tactic Description	Pers Hours	Equipment Description	Equip Qty
	Fuels reduction -	3.00	-	
	Engine on scene -	3.00	-	



NPS Wildand Fire Risk Assessment - Facility Assessment

For more information visit <https://wildfire-risk-assessments-nifc.hub.arcgis.com>

Facility: Firewood Sales Bldg Aspenglen Campground

Unit - Location: ROMO - North Entrance
FMSS ID: Firewood Sales Bldg Aspenglen Campground
Field Crew: L Nelson
Last Site Visit Date: 1/29/2013

Rating: Moderate
Protection Level : Not Designated
Local ID: [Local_ID]
Lat(WGS84): 40° 23.9796' Long(WGS84): -105° 35.589'



2013_ROMO_Firewood Sales Bldg Aspenglen Campground _Firewood Sales Bldg Aspenglen Campground_D.jpg



2013_ROMO_Firewood Sales Bldg Aspenglen Campground _Firewood Sales Bldg Aspenglen Campground_C.jpg



2013_ROMO_Firewood Sales Bldg Aspenglen Campground _Firewood Sales Bldg Aspenglen Campground_B.jpg



2013_ROMO_Firewood Sales Bldg Aspenglen Campground _Firewood Sales Bldg Aspenglen Campground_A.jpg



NPS Wildand Fire Risk Assessment - Facility Assessment

For more information visit <https://wildfire-risk-assessments-nifc.hub.arcgis.com>

Facility: **INHOLDER STRUCTURE**

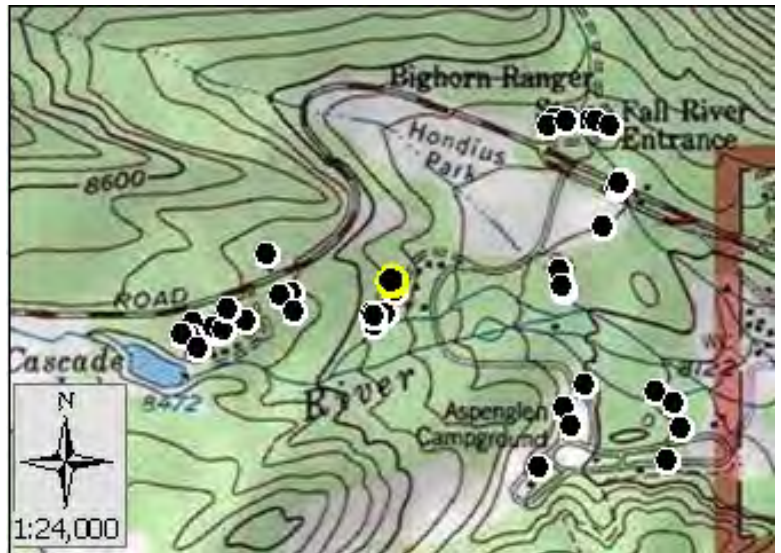
Unit - Location: ROMO - North Entrance
FMSS ID:
Structure Type: Building
Structure Use: Private
Owner: Private
Field Crew:
Last Site Visit Date:

Rating: PVTNotSurveyed
Protection Level : Not Designated
Resources of Concern Present? Unknown
Occupied?
Local ID: [Local_ID]
In a Community? Yes - Cascade Lake Aspenglen Inholder Structures
Lat(WGS84): 40° 24.1448' **Long(WGS84):** -105° 35.8568'

Primary Access: Road
Ingress/Egress: Two or more roads in/out
Access Width: 2 lanes (>24ft)
Access Condition: Surfaced-paved, grade<5%
Bridge Condition: None/nonflammable,load limit will not limit response
Access & Turnarounds: Access is <300 ft from facility w/turnaround
Facility Number/Sign: Marked and clearly visible
Defensible Space: >100ft treated
Fuel Load (w/in 300 ft): Moderate
Fuel Type (w/in 300ft): Grass,tundra,northern hardwood litter
Topography (w/in 300ft): Slope <5%
Roof Material:
Siding Material:
Foundation:
Fences/Decks:
Firewood:
Propane Tanks:
Water Supply: Pressurized hydrant(s) or fixed sprinkler system
Overhead Hazards: No overhead hazards
Safety Zones: Potential safety zone(s) in area
Additional Obstacles: None
Triage Category:
Hazmat:
Assessment Comments:



● Facility
■ NPS Boundary



Score:
Rating: PVTNotSurveyed



Asset Priority Index (API):
N/A



Factors Driving the Ratings



■ Access
■ Environment



NPS Wildand Fire Risk Assessment - Facility Assessment

For more information visit <https://wildfire-risk-assessments-nifc.hub.arcgis.com>

Facility: B-0825-N Stage & Screen (amphitheater) AGCG

Unit - Location: ROMO - North Entrance
FMSS ID: 25287
Structure Type: Building
Structure Use: Public
Owner: NPS
Field Crew: Vaughn
Last Site Visit Date: 9/23/2014

Rating: High
Protection Level : Not Designated
Resources of Concern Present? Unknown
Occupied? No
Local ID: [Local_ID]
In a Community? Yes - Aspenglen Campground
Lat(WGS84): 40° 24.0063' Long(WGS84): -105° 35.4333'

Primary Access: Road
Ingress/Egress: One roads in/out
Access Width: 1.5 lanes (>18ft)
Access Condition: Surfaced-paved, grade<5%
Bridge Condition: None/nonflammable,load limit will not limit response
Access & Turnarounds: Access is <300 ft from facility w/turnaround
Facility Number/Sign: Marked and clearly visible
Defensible Space: <30 ft treated
Fuel Load (w/in 300 ft): Moderate
Fuel Type (w/in 300ft): Shrub or timber
Topography (w/in 300ft): Slope 5% to 20%
Roof Material: Combustible or no roof
Siding Material: Wood or open sided
Foundation: Closed, < 6in masonry exposed
Fences/Decks: None or noncombustible
Firewood: None
Propane Tanks:
Water Supply: Pressurized hydrant(s) or fixed sprinkler system
Overhead Hazards: No overhead hazards
Safety Zones: No safety zone(s) in area
Additional Obstacles: None
Triage Category:
Hazmat:
Assessment Comments:



● Facility
■ NPS Boundary

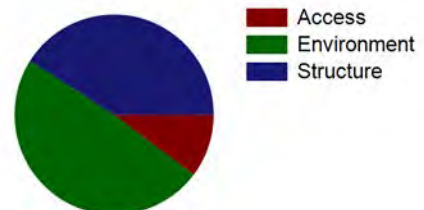
Score: 84
Rating: High



Asset Priority Index (API):
N/A



Factors Driving the Ratings





NPS Wildand Fire Risk Assessment - Facility Assessment

For more information visit <https://wildfire-risk-assessments-nifc.hub.arcgis.com>

Facility: B-0825-N Stage & Screen (amphitheater) AGCG

Unit - Location: ROMO - North Entrance
FMSS ID: 25287
Field Crew: Vaughn
Last Site Visit Date: 9/23/2014

Rating: High
Protection Level : Not Designated
Local ID: [Local_ID]
Lat(WGS84): 40° 24.0063' Long(WGS84): -105° 35.4333'

Recommended Treatments

Zone	Treatment Description	Pers Hours	Treatment Cycle	Treatment Priority	Treatment Status	Date Next Treatment Recommended	Equipment Description	Equip Qty
1	Limb trees 6 to 15 feet above ground -	3		Unknown	Planned		-	
	Flammable ground cover such as leaf litter, woody debris or highly flammable vegetation should be removed -	3		Unknown	Planned		-	
2	Flammable ground cover should be removed or isolated -	3		Unknown	Planned		-	



NPS Wildand Fire Risk Assessment - Facility Assessment

For more information visit <https://wildfire-risk-assessments-nifc.hub.arcgis.com>

Facility: B-0825-N Stage & Screen (amphitheater) AGCG

Unit - Location: ROMO - North Entrance

FMSS ID: 25287

Field Crew: Vaughn

Last Site Visit Date: 9/23/2014

Rating: High

Protection Level : Not Designated

Local ID: [Local_ID]

Lat(WGS84): 40° 24.0063' Long(WGS84): -105° 35.4333'

Recommended Tactics

Triage Category	Tactic Description	Pers Hours	Equipment Description	Equip Qty
	Fuels reduction -	3.00	-	
	Burnout, no line construction necessary -	3.00	-	
	Handline -	3.00	-	



NPS Wildand Fire Risk Assessment - Facility Assessment

For more information visit <https://wildfire-risk-assessments-nifc.hub.arcgis.com>

Facility: B-0825-N Stage & Screen (amphitheater) AGCG

Unit - Location: ROMO - North Entrance
FMSS ID: 25287
Field Crew: Vaughn
Last Site Visit Date: 9/23/2014

Rating: High
Protection Level : Not Designated
Local ID: [Local_ID]
Lat(WGS84): 40° 24.0063' Long(WGS84): -105° 35.4333'



ROMO_25287_B-0825-N Stage & Screen (amphitheater) AGCG_Front.jpg



ROMO_25287_B-0825-N Stage & Screen (amphitheater) AGCG_D.jpg



2014_ROMO_25287_B-0825-N Stage & Screen (amphitheater) AGCG_D.jpg



2014_ROMO_25287_B-0825-N Stage & Screen (amphitheater) AGCG_C.jpg



ROMO_25287_B-0825-N Stage & Screen (amphitheater) AGCG_C.jpg



ROMO_25287_B-0825-N Stage & Screen (amphitheater) AGCG_B.jpg



NPS Wildand Fire Risk Assessment - Facility Assessment

For more information visit <https://wildfire-risk-assessments-nifc.hub.arcgis.com>



2014_ROMO_25287_B-0825-N Stage & Screen (amphitheater) AGCG_B.jpg



2014_ROMO_25287_B-0825-N Stage & Screen (amphitheater) AGCG_A.jpg



ROMO_25287_B-0825-N Stage & Screen (amphitheater) AGCG_A.jpg



NPS Wildand Fire Risk Assessment - Facility Assessment

For more information visit <https://wildfire-risk-assessments-nifc.hub.arcgis.com>

Facility: **INHOLDER STRUCTURE**

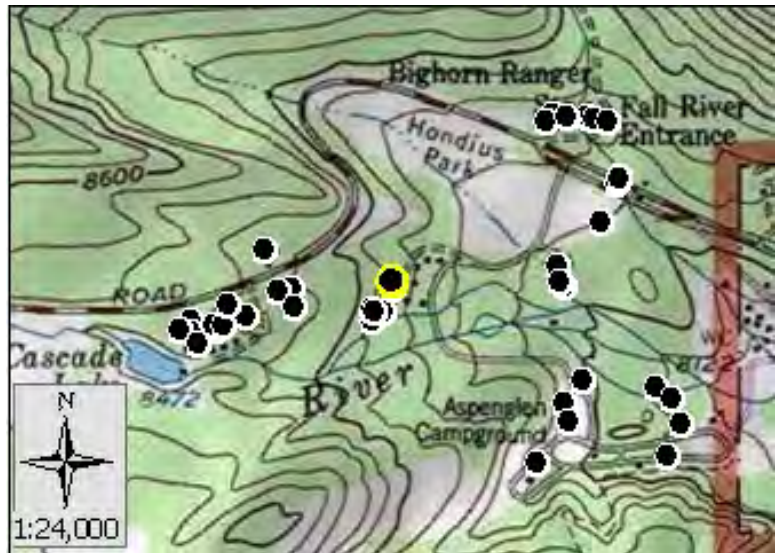
Unit - Location: ROMO - North Entrance
FMSS ID:
Structure Type: Building
Structure Use: Private
Owner: Private
Field Crew:
Last Site Visit Date:

Rating: PVTNotSurveyed
Protection Level : Not Designated
Resources of Concern Present? Unknown
Occupied?
Local ID: [Local_ID]
In a Community? Yes - Cascade Lake Aspenglen Inholder Structures
Lat(WGS84): 40° 24.1399' **Long(WGS84):** -105° 35.8548'

Primary Access: Road
Ingress/Egress: Two or more roads in/out
Access Width: 2 lanes (>24ft)
Access Condition: Surfaced-paved, grade<5%
Bridge Condition: None/nonflammable,load limit will not limit response
Access & Turnarounds: Access is <300 ft from facility w/turnaround
Facility Number/Sign: Marked and clearly visible
Defensible Space: >100ft treated
Fuel Load (w/in 300 ft): Moderate
Fuel Type (w/in 300ft): Grass,tundra,northern hardwood litter
Topography (w/in 300ft): Slope <5%
Roof Material:
Siding Material:
Foundation:
Fences/Decks:
Firewood:
Propane Tanks:
Water Supply: Pressurized hydrant(s) or fixed sprinkler system
Overhead Hazards: No overhead hazards
Safety Zones: Potential safety zone(s) in area
Additional Obstacles: None
Triage Category:
Hazmat:
Assessment Comments:



● Facility
■ NPS Boundary



Score:
Rating: PVTNotSurveyed



Asset Priority Index (API):
N/A



Factors Driving the Ratings



■ Access
■ Environment



NPS Wildand Fire Risk Assessment - Facility Assessment

For more information visit <https://wildfire-risk-assessments-nifc.hub.arcgis.com>

Facility: B-2000-N Fall River Visitor Center

Unit - Location: ROMO - North Entrance

FMSS ID: 37237

Structure Type: Building

Structure Use: Public

Owner: NPS

Field Crew: Vaughn

Last Site Visit Date: 9/23/2014

Rating: Moderate

Protection Level : Not Designated

Resources of Concern Present? Unknown

Occupied? Yes

Local ID: [Local_ID]

In a Community? No

Lat(WGS84): 40° 24.1085' Long(WGS84): -105° 35.1896'

Primary Access: Road

Ingress/Egress: Two or more roads in/out

Access Width: 2 lanes (>24ft)

Access Condition: Surfaced-paved, grade<5%

Bridge Condition: None/nonflammable,load limit will not limit response

Access & Turnarounds: Access is <300 ft from facility w/o turnaround

Facility Number/Sign: Marked and clearly visible

Defensible Space: <30 ft treated

Fuel Load (w/in 300 ft): Moderate

Fuel Type (w/in 300ft): Shrub or timber

Topography (w/in 300ft): Slope 21% to 30%

Roof Material: Fire resistant- tar,rubberized

Siding Material: Wood or open sided

Foundation: Closed, < 6in masonry exposed

Fences/Decks: Combustible,adjacent,no veg/debris clearance

Firewood: None

Propane Tanks: None

Water Supply: Pressurized hydrant(s) or fixed sprinkler system

Overhead Hazards: No overhead hazards

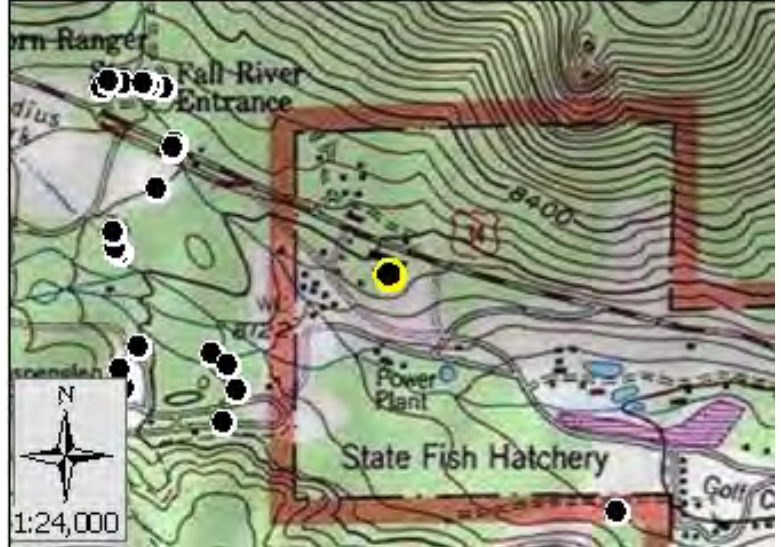
Safety Zones: Potential safety zone(s) in area

Additional Obstacles: None

Triage Category:

Hazmat:

Assessment Comments:



● Facility
■ NPS Boundary

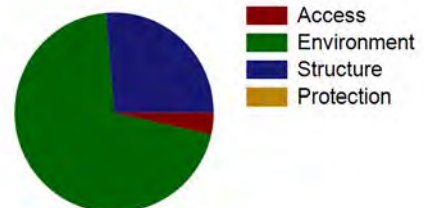
Score: 57
Rating: Moderate



Asset Priority Index (API):
55



Factors Driving the Ratings





NPS Wildand Fire Risk Assessment - Facility Assessment

For more information visit <https://wildfire-risk-assessments-nifc.hub.arcgis.com>

Facility: B-2000-N Fall River Visitor Center

Unit - Location: ROMO - North Entrance
FMSS ID: 37237
Field Crew: Vaughn
Last Site Visit Date: 9/23/2014

Rating: Moderate
Protection Level : Not Designated
Local ID: [Local_ID]
Lat(WGS84): 40° 24.1085' Long(WGS84): -105° 35.1896'

Recommended Treatments

Zone	Treatment Description	Pers Hours	Treatment Cycle	Treatment Priority	Treatment Status	Date Next Treatment Recommended	Equipment Description	Equip Qty
1	Limb trees 6 to 15 feet above ground -	4	5 Year		Unknown	9/23/2014	-	
	Clear adjacent and overhanging fuels to create 10 feet spacing between canopy and structure or chimney openings -	20	3 Year		Unknown	9/23/2014	-	



NPS Wildand Fire Risk Assessment - Facility Assessment

For more information visit <https://wildfire-risk-assessments-nifc.hub.arcgis.com>

Facility: B-2000-N Fall River Visitor Center

Unit - Location: ROMO - North Entrance

FMSS ID: 37237

Field Crew: Vaughn

Last Site Visit Date: 9/23/2014

Rating: Moderate

Protection Level : Not Designated

Local ID: [Local_ID]

Lat(WGS84): 40° 24.1085' Long(WGS84): -105° 35.1896'

Recommended Tactics

Triage Category	Tactic Description	Pers Hours	Equipment Description	Equip Qty
	Engine on scene -	5.00	Engine/OtherVehicle-	1
	Fuels reduction -	60.00	-	



NPS Wildand Fire Risk Assessment - Facility Assessment

For more information visit <https://wildfire-risk-assessments-nifc.hub.arcgis.com>

Facility: B-2000-N Fall River Visitor Center

Unit - Location: ROMO - North Entrance
FMSS ID: 37237
Field Crew: Vaughn
Last Site Visit Date: 9/23/2014

Rating: Moderate
Protection Level : Not Designated
Local ID: [Local_ID]
Lat(WGS84): 40° 24.1085' Long(WGS84): -105° 35.1896'



ROMO_37237_B-2000-N Fall River Visitor Center_Front.jpg



ROMO_37237_B-2000-N Fall River Visitor Center_D.jpg



ROMO_37237_B-2000-N Fall River Visitor Center_C.jpg



ROMO_37237_B-2000-N Fall River Visitor Center_B.jpg



ROMO_37237_B-2000-N Fall River Visitor Center_A.jpg



NPS Wildand Fire Risk Assessment - Facility Assessment

For more information visit <https://wildfire-risk-assessments-nifc.hub.arcgis.com>

Facility: **INHOLDER STRUCTURE**

Unit - Location: ROMO - North Entrance
FMSS ID:
Structure Type: Building
Structure Use: Private
Owner: Private
Field Crew:
Last Site Visit Date:

Rating: PVTNotSurveyed
Protection Level : Not Designated
Resources of Concern Present? Unknown
Occupied?
Local ID: [Local_ID]
In a Community? Yes - Cascade Lake Aspenglen Inholder Structures
Lat(WGS84): 40° 24.1294' **Long(WGS84):** -105° 36.0247'

Primary Access: Road
Ingress/Egress: Two or more roads in/out
Access Width: 2 lanes (>24ft)
Access Condition: Surfaced-paved, grade<5%
Bridge Condition: None/nonflammable,load limit will not limit response
Access & Turnarounds: Access is <300 ft from facility w/turnaround
Facility Number/Sign: Marked and clearly visible
Defensible Space: >100ft treated
Fuel Load (w/in 300 ft): Moderate
Fuel Type (w/in 300ft): Grass,tundra,northern hardwood litter
Topography (w/in 300ft): Slope <5%
Roof Material:
Siding Material:
Foundation:
Fences/Decks:
Firewood:
Propane Tanks:
Water Supply: Pressurized hydrant(s) or fixed sprinkler system
Overhead Hazards: No overhead hazards
Safety Zones: Potential safety zone(s) in area
Additional Obstacles: None
Triage Category:
Hazmat:
Assessment Comments:



● Facility
■ NPS Boundary



Score:
Rating: PVTNotSurveyed



Asset Priority Index (API):
N/A



Factors Driving the Ratings



■ Access
■ Environment



NPS Wildand Fire Risk Assessment - Facility Assessment

For more information visit <https://wildfire-risk-assessments-nifc.hub.arcgis.com>

Facility: B-0169-H Bighorn Ranger Station

Unit - Location: ROMO - North Entrance

FMSS ID: 24045

Structure Type: Building

Structure Use: Admin

Owner: NPS

Field Crew: L Nelson

Last Site Visit Date: 12/2/2013

Rating: Moderate

Protection Level : Full

Resources of Concern Present? Unknown

Occupied? Yes

Local ID: [Local_ID]

In a Community? Yes - Fall River Entrance

Lat(WGS84): 40° 24.327' Long(WGS84): -105° 35.593'

Primary Access: Road

Ingress/Egress: Two or more roads in/out

Access Width: 2 lanes (>24ft)

Access Condition: Surfaced-paved, grade<5%

Bridge Condition: None/nonflammable,load limit will not limit response

Access & Turnarounds: Access is <300 ft from facility w/turnaround

Facility Number/Sign: Marked and clearly visible

Defensible Space: >100ft treated

Fuel Load (w/in 300 ft): Moderate

Fuel Type (w/in 300ft): Shrub or timber

Topography (w/in 300ft): Slope 5% to 20%

Roof Material: Combustible or no roof

Siding Material: Wood or open sided

Foundation: Closed, < 6in masonry exposed

Fences/Decks: None or noncombustible

Firewood: None

Propane Tanks:

Water Supply: Pressurized hydrant(s) or fixed sprinkler system

Overhead Hazards: No overhead hazards

Safety Zones: Potential safety zone(s) in area

Additional Obstacles: None

Triage Category:

Hazmat: Propane tanks in the area

Assessment Comments:



● Facility
■ NPS Boundary



Score: 54
Rating: Moderate



Asset Priority Index (API):
70



Factors Driving the Ratings



■ Access
■ Environment
■ Structure



NPS Wildand Fire Risk Assessment - Facility Assessment

For more information visit <https://wildfire-risk-assessments-nifc.hub.arcgis.com>

Facility: B-0169-H Bighorn Ranger Station

Unit - Location: ROMO - North Entrance
FMSS ID: 24045
Field Crew: L Nelson
Last Site Visit Date: 12/2/2013

Rating: Moderate
Protection Level : Full
Local ID: [Local_ID]
Lat(WGS84): 40° 24.327' Long(WGS84): -105° 35.593'

Recommended Treatments

Zone	Treatment Description	Pers Hours	Treatment Cycle	Treatment Priority	Treatment Status	Date Next Treatment Recommended	Equipment Description	Equip Qty
1	Roof and gutters should be cleared of vegetative debris -	3		Unknown	Planned		-	



NPS Wildand Fire Risk Assessment - Facility Assessment

For more information visit <https://wildfire-risk-assessments-nifc.hub.arcgis.com>

Facility: B-0169-H Bighorn Ranger Station

Unit - Location: ROMO - North Entrance

FMSS ID: 24045

Field Crew: L Nelson

Last Site Visit Date: 12/2/2013

Rating: Moderate

Protection Level : Full

Local ID: [Local_ID]

Lat(WGS84): 40° 24.327' Long(WGS84): -105° 35.593'

Recommended Tactics

Triage Category	Tactic Description	Pers Hours	Equipment Description	Equip Qty
	Handline -	40.00	-	
	Engine on scene -	6.00	-	
	Burnout, no line construction necessary -	20.00	-	



NPS Wildand Fire Risk Assessment - Facility Assessment

For more information visit <https://wildfire-risk-assessments-nifc.hub.arcgis.com>

Facility: B-0169-H Bighorn Ranger Station

Unit - Location: ROMO - North Entrance
FMSS ID: 24045
Field Crew: L Nelson
Last Site Visit Date: 12/2/2013

Rating: Moderate
Protection Level : Full
Local ID: [Local_ID]
Lat(WGS84): 40° 24.327' Long(WGS84): -105° 35.593'



ROMO_24045_Bighorn Ranger Station (B).JPG



ROMO_24045_Bighorn Ranger Station (A).JPG



2013_ROMO_24045_B-0169-H Bighorn Ranger Station_D.jpg



2013_ROMO_24045_B-0169-H Bighorn Ranger Station_C.jpg



NPS Wildand Fire Risk Assessment - Facility Assessment

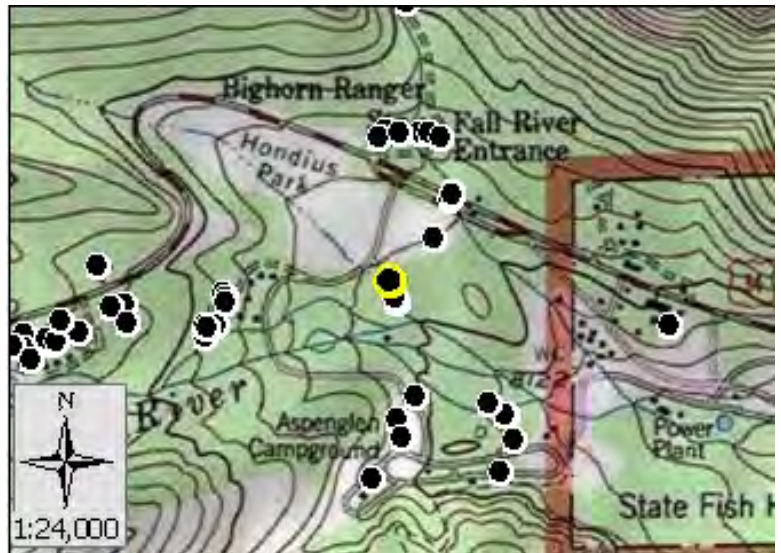
For more information visit <https://wildfire-risk-assessments-nifc.hub.arcgis.com>

Facility: Q-0749-N S Efficiency Cabin (Smith) 00000749

Unit - Location: ROMO - North Entrance
FMSS ID: 24068
Structure Type: Building
Structure Use: Admin
Owner: NPS
Field Crew: L Nelson
Last Site Visit Date: 1/29/2013

Rating: High
Protection Level : Not Designated
Resources of Concern Present? Unknown
Occupied?
Local ID: [Local_ID]
In a Community? Yes - Fall River Entrance
Lat(WGS84): 40° 24.1577' Long(WGS84): -105° 35.6051'

Primary Access: Road
Ingress/Egress: One roads in/out
Access Width: 1 lane (<18ft)
Access Condition: Non-surfaced- gravel,dirt,grade<5%
Bridge Condition: None/nonflammable,load limit will not limit response
Access & Turnarounds: Access is >300ft from facility w/o turnaround
Facility Number/Sign: None or not clearly visible
Defensible Space: 30 ft treated
Fuel Load (w/in 300 ft): Light
Fuel Type (w/in 300ft): Grass,shrub,hardwood litter
Topography (w/in 300ft): Slope 5% to 20%
Roof Material: Noncombustible or not applicable
Siding Material: Wood or open sided
Foundation: Closed, 6in to 30in masonry exposed
Fences/Decks: None or noncombustible
Firewood: None
Propane Tanks: None
Water Supply: Reliable water source nearby
Overhead Hazards: No overhead hazards
Safety Zones: No safety zone(s) in area
Additional Obstacles: None
Triage Category:
Hazmat:
Assessment Comments:



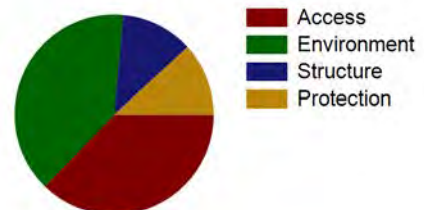
Score: 29
Rating: High



Asset Priority Index (API):
62



Factors Driving the Ratings





NPS Wildand Fire Risk Assessment - Facility Assessment

For more information visit <https://wildfire-risk-assessments-nifc.hub.arcgis.com>

Facility: Q-0749-N S Efficiency Cabin (Smith) 00000749

Unit - Location: ROMO - North Entrance
FMSS ID: 24068
Field Crew: L Nelson
Last Site Visit Date: 1/29/2013

Rating: High
Protection Level : Not Designated
Local ID: [Local_ID]
Lat(WGS84): 40° 24.1577' Long(WGS84): -105° 35.6051'

Recommended Treatments

Zone	Treatment Description	Pers Hours	Treatment Cycle	Treatment Priority	Treatment Status	Date Next Treatment Recommended	Equipment Description	Equip Qty
1	Flammable ground cover such as leaf litter, woody debris or highly flammable vegetation should be removed -	3		Unknown	Planned		-	



NPS Wildand Fire Risk Assessment - Facility Assessment

For more information visit <https://wildfire-risk-assessments-nifc.hub.arcgis.com>

Facility: Q-0749-N S Efficiency Cabin (Smith) 00000749

Unit - Location: ROMO - North Entrance

FMSS ID: 24068

Field Crew: L Nelson

Last Site Visit Date: 1/29/2013

Rating: High

Protection Level : Not Designated

Local ID: [Local_ID]

Lat(WGS84): 40° 24.1577' Long(WGS84): -105° 35.6051'

Recommended Tactics

Triage Category	Tactic Description	Pers Hours	Equipment Description	Equip Qty
	Handline -	3.00	-	
	Install sprinkler system -	6.00	-	
	Fuels reduction -	3.00	-	
	Engine on scene -	3.00	-	



NPS Wildand Fire Risk Assessment - Facility Assessment

For more information visit <https://wildfire-risk-assessments-nifc.hub.arcgis.com>

Facility: Q-0749-N S Efficiency Cabin (Smith) 00000749

Unit - Location: ROMO - North Entrance
FMSS ID: 24068
Field Crew: L Nelson
Last Site Visit Date: 1/29/2013

Rating: High
Protection Level : Not Designated
Local ID: [Local_ID]
Lat(WGS84): 40° 24.1577' Long(WGS84): -105° 35.6051'



2013_ROMO_24068_Q-0749-N S Efficiency Cabin (Smith) 00000749_D.jpg



2013_ROMO_24068_Q-0749-N S Efficiency Cabin (Smith) 00000749_C.jpg



2013_ROMO_24068_Q-0749-N S Efficiency Cabin (Smith) 00000749_B.jpg



2013_ROMO_24068_Q-0749-N S Efficiency Cabin (Smith) 00000749_A.jpg



NPS Wildand Fire Risk Assessment - Facility Assessment

For more information visit <https://wildfire-risk-assessments-nifc.hub.arcgis.com>

Facility: B-0869-N Pumphouse, Bighorn

Unit - Location: ROMO - North Entrance
FMSS ID: 97850
Structure Type: Utility
Structure Use: Admin
Owner: NPS
Field Crew: L Nelson
Last Site Visit Date: 12/2/2013

Rating: Moderate
Protection Level : Not Designated
Resources of Concern Present? Unknown
Occupied? No
Local ID: [Local_ID]
In a Community? Yes - Fall River Entrance
Lat(WGS84): 40° 24.3271' **Long(WGS84):** -105° 35.5612'

Primary Access: Road
Ingress/Egress: Two or more roads in/out
Access Width: 2 lanes (>24ft)
Access Condition: Surfaced-paved, grade<5%
Bridge Condition: None/nonflammable,load limit will not limit response
Access & Turnarounds: Access is <300 ft from facility w/turnaround
Facility Number/Sign: Marked and clearly visible
Defensible Space: 100 ft treated
Fuel Load (w/in 300 ft): Moderate
Fuel Type (w/in 300ft): Shrub or timber
Topography (w/in 300ft): Slope 5% to 20%
Roof Material: Combustible or no roof
Siding Material: Wood or open sided
Foundation: Closed, < 6in masonry exposed
Fences/Decks: None or noncombustible
Firewood: None
Propane Tanks:
Water Supply: Pressurized hydrant(s) or fixed sprinkler system
Overhead Hazards: No overhead hazards
Safety Zones: Potential safety zone(s) in area
Additional Obstacles: None
Triage Category:
Hazmat: Propane tanks in the area
Assessment Comments:



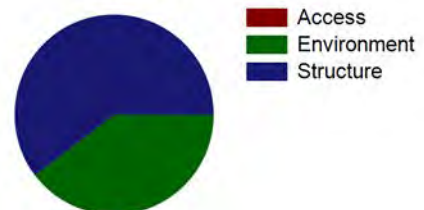
Score: 56
Rating: Moderate



Asset Priority Index (API):
80



Factors Driving the Ratings





NPS Wildand Fire Risk Assessment - Facility Assessment

For more information visit <https://wildfire-risk-assessments-nifc.hub.arcgis.com>

Facility: B-0869-N Pumphouse, Bighorn

Unit - Location: ROMO - North Entrance
FMSS ID: 97850
Field Crew: L Nelson
Last Site Visit Date: 12/2/2013

Rating: Moderate
Protection Level : Not Designated
Local ID: [Local_ID]
Lat(WGS84): 40° 24.3271' Long(WGS84): -105° 35.5612'

Recommended Treatments

Zone	Treatment Description	Pers Hours	Treatment Cycle	Treatment Priority	Treatment Status	Date Next Treatment Recommended	Equipment Description	Equip Qty
1	Limb trees 6 to 15 feet above ground -	3		Unknown	Planned		-	



NPS Wildand Fire Risk Assessment - Facility Assessment

For more information visit <https://wildfire-risk-assessments-nifc.hub.arcgis.com>

Facility: B-0869-N Pumphouse, Bighorn

Unit - Location: ROMO - North Entrance

FMSS ID: 97850

Field Crew: L Nelson

Last Site Visit Date: 12/2/2013

Rating: Moderate

Protection Level : Not Designated

Local ID: [Local_ID]

Lat(WGS84): 40° 24.3271' Long(WGS84): -105° 35.5612'

Recommended Tactics

Triage Category	Tactic Description	Pers Hours	Equipment Description	Equip Qty
	Engine on scene -	6.00	-	
	Burnout, no line construction necessary -	20.00	-	
	Handline -	40.00	-	



NPS Wildand Fire Risk Assessment - Facility Assessment

For more information visit <https://wildfire-risk-assessments-nifc.hub.arcgis.com>

Facility: B-0869-N Pumphouse, Bighorn

Unit - Location: ROMO - North Entrance
FMSS ID: 97850
Field Crew: L Nelson
Last Site Visit Date: 12/2/2013

Rating: Moderate
Protection Level : Not Designated
Local ID: [Local_ID]
Lat(WGS84): 40° 24.3271' Long(WGS84): -105° 35.5612'



2013_ROMO_97850_B-0869-N Pumphouse, Bighorn_D.jpg



2013_ROMO_97850_B-0869-N Pumphouse, Bighorn_C.jpg



2013_ROMO_97850_B-0869-N Pumphouse, Bighorn_B.jpg



2013_ROMO_97850_B-0869-N Pumphouse, Bighorn_A.jpg



NPS Wildand Fire Risk Assessment - Facility Assessment

For more information visit <https://wildfire-risk-assessments-nifc.hub.arcgis.com>

Facility: **INHOLDER STRUCTURE**

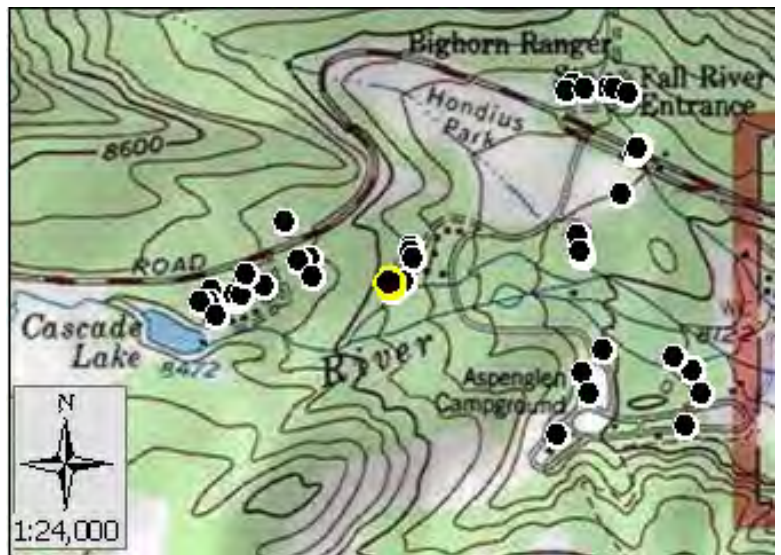
Unit - Location: ROMO - North Entrance
FMSS ID:
Structure Type: Building
Structure Use: Private
Owner: Private
Field Crew:
Last Site Visit Date:

Rating: PVTNotSurveyed
Protection Level : Not Designated
Resources of Concern Present? Unknown
Occupied?
Local ID: [Local_ID]
In a Community? Yes - Cascade Lake Aspenglen Inholder Structures
Lat(WGS84): 40° 24.1041' **Long(WGS84):** -105° 35.8845'

Primary Access: Road
Ingress/Egress: Two or more roads in/out
Access Width: 2 lanes (>24ft)
Access Condition: Surfaced-paved, grade<5%
Bridge Condition: None/nonflammable,load limit will not limit response
Access & Turnarounds: Access is <300 ft from facility w/turnaround
Facility Number/Sign: Marked and clearly visible
Defensible Space: >100ft treated
Fuel Load (w/in 300 ft): Moderate
Fuel Type (w/in 300ft): Grass,tundra,northern hardwood litter
Topography (w/in 300ft): Slope <5%
Roof Material:
Siding Material:
Foundation:
Fences/Decks:
Firewood:
Propane Tanks:
Water Supply: Pressurized hydrant(s) or fixed sprinkler system
Overhead Hazards: No overhead hazards
Safety Zones: Potential safety zone(s) in area
Additional Obstacles: None
Triage Category:
Hazmat:
Assessment Comments:



● Facility
■ NPS Boundary



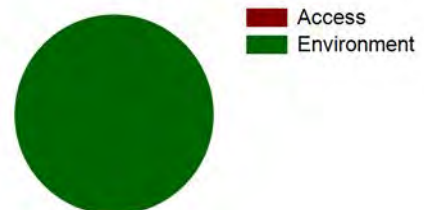
Score:
Rating: PVTNotSurveyed



Asset Priority Index (API):
N/A



Factors Driving the Ratings





NPS Wildand Fire Risk Assessment - Facility Assessment

For more information visit <https://wildfire-risk-assessments-nifc.hub.arcgis.com>

Facility: **INHOLDER STRUCTURE**

Unit - Location: ROMO - North Entrance
FMSS ID:
Structure Type: Building
Structure Use: Private
Owner: Private
Field Crew:
Last Site Visit Date:

Rating: PVTNotSurveyed
Protection Level : Not Designated
Resources of Concern Present? Unknown
Occupied?
Local ID: [Local_ID]
In a Community? Yes - Cascade Lake Aspenglen Inholder Structures
Lat(WGS84): 40° 24.1113' **Long(WGS84):** -105° 36.0017'

Primary Access: Road
Ingress/Egress: Two or more roads in/out
Access Width: 2 lanes (>24ft)
Access Condition: Surfaced-paved, grade<5%
Bridge Condition: None/nonflammable,load limit will not limit response
Access & Turnarounds: Access is <300 ft from facility w/turnaround
Facility Number/Sign: Marked and clearly visible
Defensible Space: >100ft treated
Fuel Load (w/in 300 ft): Moderate
Fuel Type (w/in 300ft): Grass,tundra,northern hardwood litter
Topography (w/in 300ft): Slope <5%
Roof Material:
Siding Material:
Foundation:
Fences/Decks:
Firewood:
Propane Tanks:
Water Supply: Pressurized hydrant(s) or fixed sprinkler system
Overhead Hazards: No overhead hazards
Safety Zones: Potential safety zone(s) in area
Additional Obstacles: None
Triage Category:
Hazmat:
Assessment Comments:



● Facility
■ NPS Boundary



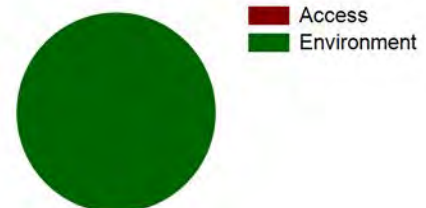
Score:
Rating: PVTNotSurveyed



Asset Priority Index (API):
N/A



Factors Driving the Ratings





NPS Wildand Fire Risk Assessment - Facility Assessment

For more information visit <https://wildfire-risk-assessments-nifc.hub.arcgis.com>

Facility: Projection Booth AGCG

Unit - Location: ROMO - North Entrance

FMSS ID: Projection Booth AGCG

Structure Type: Building

Structure Use: Admin

Owner: NPS

Field Crew: Vaughn

Last Site Visit Date: 9/23/2014

Rating: Moderate

Protection Level : Not Designated

Resources of Concern Present? Unknown

Occupied? No

Local ID: [Local_ID]

In a Community? Yes - Aspenglen Campground

Lat(WGS84): 40° 24.0055' Long(WGS84): -105° 35.4347'

Primary Access: Road

Ingress/Egress: One roads in/out

Access Width: 1.5 lanes (>18ft)

Access Condition: Surfaced-paved, grade<5%

Bridge Condition: None/nonflammable,load limit will not limit response

Access & Turnarounds: Access is <300 ft from facility w/turnaround

Facility Number/Sign: None or not clearly visible

Defensible Space: <30 ft treated

Fuel Load (w/in 300 ft): Moderate

Fuel Type (w/in 300ft): Shrub or timber

Topography (w/in 300ft): Slope 21% to 30%

Roof Material: Noncombustible or not applicable

Siding Material: Wood or open sided

Foundation: Closed, < 6in masonry exposed

Fences/Decks: None or noncombustible

Firewood: None

Propane Tanks:

Water Supply: Pressurized hydrant(s) or fixed sprinkler system

Overhead Hazards: No overhead hazards

Safety Zones: No safety zone(s) in area

Additional Obstacles: None

Triage Category:

Hazmat:

Assessment Comments:



● Facility
■ NPS Boundary

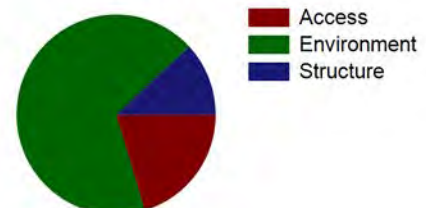
Score: 61
Rating: Moderate



Asset Priority Index (API):
N/A



Factors Driving the Ratings





NPS Wildand Fire Risk Assessment - Facility Assessment

For more information visit <https://wildfire-risk-assessments-nifc.hub.arcgis.com>

Facility: Projection Booth AGCG

Unit - Location: ROMO - North Entrance
FMSS ID: Projection Booth AGCG
Field Crew: Vaughn
Last Site Visit Date: 9/23/2014

Rating: Moderate
Protection Level : Not Designated
Local ID: [Local_ID]
Lat(WGS84): 40° 24.0055' Long(WGS84): -105° 35.4347'

Recommended Treatments

Zone	Treatment Description	Pers Hours	Treatment Cycle	Treatment Priority	Treatment Status	Date Next Treatment Recommended	Equipment Description	Equip Qty
1	Limb trees 6 to 15 feet above ground -	3		Unknown	Planned		-	



NPS Wildand Fire Risk Assessment - Facility Assessment

For more information visit <https://wildfire-risk-assessments-nifc.hub.arcgis.com>

Facility: Projection Booth AGCG

Unit - Location: ROMO - North Entrance

FMSS ID: Projection Booth AGCG

Field Crew: Vaughn

Last Site Visit Date: 9/23/2014

Rating: Moderate

Protection Level : Not Designated

Local ID: [Local_ID]

Lat(WGS84): 40° 24.0055' Long(WGS84): -105° 35.4347'

Recommended Tactics

Triage Category	Tactic Description	Pers Hours	Equipment Description	Equip Qty
	Fuels reduction -	3.00	-	
	Handline -	3.00	-	
	Burnout, no line construction necessary -	3.00	-	



NPS Wildand Fire Risk Assessment - Facility Assessment

For more information visit <https://wildfire-risk-assessments-nifc.hub.arcgis.com>

Facility: Projection Booth AGCG

Unit - Location: ROMO - North Entrance
FMSS ID: Projection Booth AGCG
Field Crew: Vaughn
Last Site Visit Date: 9/23/2014

Rating: Moderate
Protection Level : Not Designated
Local ID: [Local_ID]
Lat(WGS84): 40° 24.0055' Long(WGS84): -105° 35.4347'



ROMO_Projection Booth AGCG_Projection Booth AGCG_Front.jpg



2014_ROMO_Projection Booth AGCG_Projection Booth AGCG_D.jpg



2014_ROMO_Projection Booth AGCG_Projection Booth AGCG_C.jpg



2014_ROMO_Projection Booth AGCG_Projection Booth AGCG_B.jpg



2014_ROMO_Projection Booth AGCG_Projection Booth AGCG_A.jpg



NPS Wildand Fire Risk Assessment - Facility Assessment

For more information visit <https://wildfire-risk-assessments-nifc.hub.arcgis.com>

Facility: **INHOLDER PROPANE TANK**

Unit - Location: ROMO - North Entrance

FMSS ID:

Structure Type: Building

Structure Use: Private

Owner: Private

Field Crew:

Last Site Visit Date:

Rating: PVTNotSurveyed

Protection Level : Not Designated

Resources of Concern Present? Unknown

Occupied?

Local ID: [Local_ID]

In a Community? Yes - Cascade Lake Aspenglen Inholder Structures

Lat(WGS84): 40° 24.1071' **Long(WGS84):** -105° 35.8665'

Primary Access: Road

Ingress/Egress: Two or more roads in/out

Access Width: 2 lanes (>24ft)

Access Condition: Surfaced-paved, grade<5%

Bridge Condition: None/nonflammable,load limit will not limit response

Access & Turnarounds: Access is <300 ft from facility w/turnaround

Facility Number/Sign: Marked and clearly visible

Defensible Space: >100ft treated

Fuel Load (w/in 300 ft): Moderate

Fuel Type (w/in 300ft): Grass,tundra,northern hardwood litter

Topography (w/in 300ft): Slope <5%

Roof Material:

Siding Material:

Foundation:

Fences/Decks:

Firewood:

Propane Tanks:

Water Supply: Pressurized hydrant(s) or fixed sprinkler system

Overhead Hazards: No overhead hazards

Safety Zones: Potential safety zone(s) in area

Additional Obstacles: None

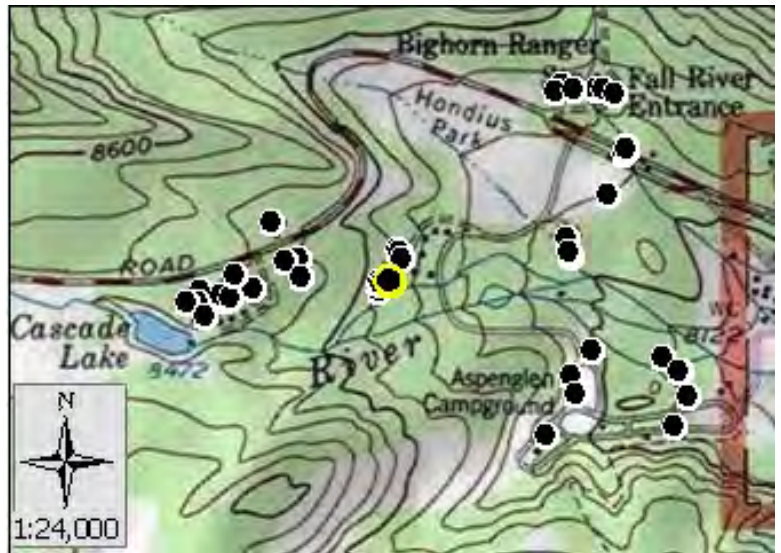
Triage Category:

Hazmat:

Assessment Comments:



● Facility
■ NPS Boundary



Score:
Rating: PVTNotSurveyed



Asset Priority Index (API):
N/A



Factors Driving the Ratings



■ Access
■ Environment



NPS Wildand Fire Risk Assessment - Facility Assessment

For more information visit <https://wildfire-risk-assessments-nifc.hub.arcgis.com>

Facility: **INHOLDER STRUCTURE**

Unit - Location: ROMO - North Entrance

FMSS ID:

Structure Type: Building

Structure Use: Private

Owner: Private

Field Crew:

Last Site Visit Date:

Rating: PVTNotSurveyed

Protection Level : Not Designated

Resources of Concern Present? Unknown

Occupied?

Local ID: [Local_ID]

In a Community? Yes - Cascade Lake Aspenglen Inholder Structures

Lat(WGS84): 40° 24.0844' **Long(WGS84):** -105° 36.1719'

Primary Access: Road

Ingress/Egress: Two or more roads in/out

Access Width: 2 lanes (>24ft)

Access Condition: Surfaced-paved, grade<5%

Bridge Condition: None/nonflammable,load limit will not limit response

Access & Turnarounds: Access is <300 ft from facility w/turnaround

Facility Number/Sign: Marked and clearly visible

Defensible Space: >100ft treated

Fuel Load (w/in 300 ft): Moderate

Fuel Type (w/in 300ft): Grass,tundra,northern hardwood litter

Topography (w/in 300ft): Slope <5%

Roof Material:

Siding Material:

Foundation:

Fences/Decks:

Firewood:

Propane Tanks:

Water Supply: Pressurized hydrant(s) or fixed sprinkler system

Overhead Hazards: No overhead hazards

Safety Zones: Potential safety zone(s) in area

Additional Obstacles: None

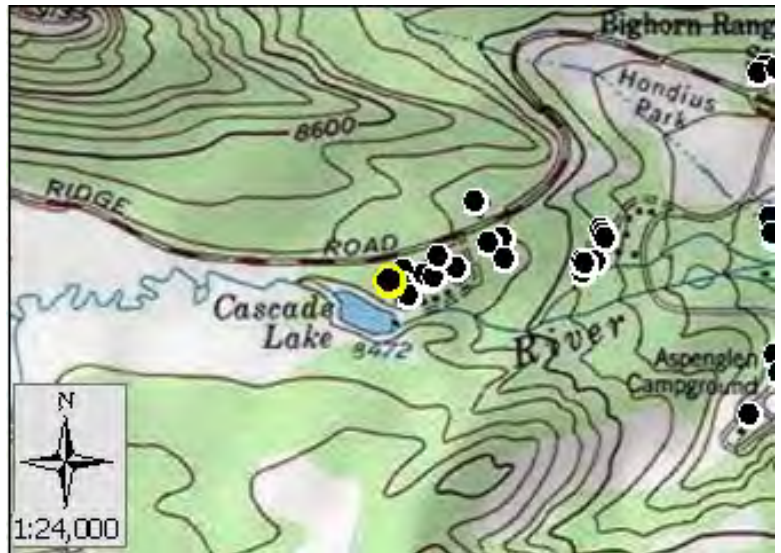
Triage Category:

Hazmat:

Assessment Comments:



● Facility
■ NPS Boundary



Score:
Rating: PVTNotSurveyed



Asset Priority Index (API):
N/A



Factors Driving the Ratings



■ Access
■ Environment



NPS Wildand Fire Risk Assessment - Facility Assessment

For more information visit <https://wildfire-risk-assessments-nifc.hub.arcgis.com>

Facility: B-0353-N Entrance Station Fall River

Unit - Location: ROMO - North Entrance
FMSS ID: 24046
Structure Type: Building
Structure Use: Public
Owner: NPS
Field Crew: L Nelson
Last Site Visit Date: 1/29/2013

Rating: Moderate
Protection Level : Not Designated
Resources of Concern Present? Unknown
Occupied?
Local ID: [Local_ID]
In a Community? Yes - Fall River Entrance
Lat(WGS84): 40° 24.2601' **Long(WGS84):** -105° 35.5135'

Primary Access: Road
Ingress/Egress: Two or more roads in/out
Access Width: 2 lanes (>24ft)
Access Condition: Surfaced-paved, grade<5%
Bridge Condition: None/nonflammable,load limit will not limit response
Access & Turnarounds: Access is <300 ft from facility w/turnaround
Facility Number/Sign: Marked and clearly visible
Defensible Space: <30 ft treated
Fuel Load (w/in 300 ft): Light
Fuel Type (w/in 300ft): Shrub or timber
Topography (w/in 300ft): Slope <5%
Roof Material: Combustible or no roof
Siding Material: Wood or open sided
Foundation: Closed, < 6in masonry exposed
Fences/Decks: None or noncombustible
Firewood: None
Propane Tanks: None
Water Supply: Pressurized hydrant(s) or fixed sprinkler system
Overhead Hazards: No overhead hazards
Safety Zones: No safety zone(s) in area
Additional Obstacles: None
Triage Category:
Hazmat:
Assessment Comments:



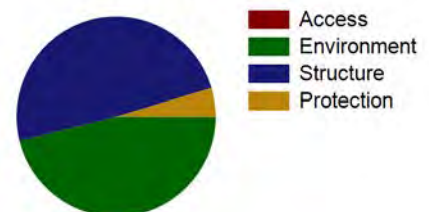
Score: 65
Rating: Moderate



Asset Priority Index (API):
55



Factors Driving the Ratings





NPS Wildand Fire Risk Assessment - Facility Assessment

For more information visit <https://wildfire-risk-assessments-nifc.hub.arcgis.com>

Facility: B-0353-N Entrance Station Fall River

Unit - Location: ROMO - North Entrance
FMSS ID: 24046
Field Crew: L Nelson
Last Site Visit Date: 1/29/2013

Rating: Moderate
Protection Level : Not Designated
Local ID: [Local_ID]
Lat(WGS84): 40° 24.2601' Long(WGS84): -105° 35.5135'

Recommended Treatments

Zone	Treatment Description	Pers Hours	Treatment Cycle	Treatment Priority	Treatment Status	Date Next Treatment Recommended	Equipment Description	Equip Qty
1	Flammable ground cover such as leaf litter, woody debris or highly flammable vegetation should be removed -	3		Unknown	Planned		-	
	Clear adjacent and overhanging fuels to create 10 feet spacing between canopy and structure or chimney openings -	3		Unknown	Planned		-	
	Limb trees 6 to 15 feet above ground -	3		Unknown	Planned		-	
2	Mow dead/dying grass to less than 4 inches -	3		Unknown	Planned		-	



NPS Wildand Fire Risk Assessment - Facility Assessment

For more information visit <https://wildfire-risk-assessments-nifc.hub.arcgis.com>

Facility: B-0353-N Entrance Station Fall River

Unit - Location: ROMO - North Entrance

FMSS ID: 24046

Field Crew: L Nelson

Last Site Visit Date: 1/29/2013

Rating: Moderate

Protection Level : Not Designated

Local ID: [Local_ID]

Lat(WGS84): 40° 24.2601' Long(WGS84): -105° 35.5135'

Recommended Tactics

Triage Category	Tactic Description	Pers Hours	Equipment Description	Equip Qty
	Burnout, no line construction necessary -	3.00	-	
	Engine on scene - As needed for flaming fron	6.00	-	
	Fuels reduction -	3.00	-	
	Handline -	3.00	-	



NPS Wildand Fire Risk Assessment - Facility Assessment

For more information visit <https://wildfire-risk-assessments-nifc.hub.arcgis.com>

Facility: B-0353-N Entrance Station Fall River

Unit - Location: ROMO - North Entrance
FMSS ID: 24046
Field Crew: L Nelson
Last Site Visit Date: 1/29/2013

Rating: Moderate
Protection Level : Not Designated
Local ID: [Local_ID]
Lat(WGS84): 40° 24.2601' Long(WGS84): -105° 35.5135'



2013_ROMO_24046_B-0353-N Entrance Station Fall River_D.jpg



2013_ROMO_24046_B-0353-N Entrance Station Fall River_C.jpg



2013_ROMO_24046_B-0353-N Entrance Station Fall River_B.jpg



2013_ROMO_24046_B-0353-N Entrance Station Fall River_A.jpg



NPS Wildand Fire Risk Assessment - Facility Assessment

For more information visit <https://wildfire-risk-assessments-nifc.hub.arcgis.com>

Facility: B-0671-N Kiosk - Entrance Station Fall River

Unit - Location: ROMO - North Entrance
FMSS ID: 24052
Structure Type: Building
Structure Use: Public
Owner: NPS
Field Crew: L Nelson
Last Site Visit Date: 1/29/2013

Rating: Low
Protection Level : Not Designated
Resources of Concern Present? Unknown
Occupied?
Local ID: [Local_ID]
In a Community? Yes - Fall River Entrance
Lat(WGS84): 40° 24.2576' Long(WGS84): -105° 35.5148'

Primary Access: Road
Ingress/Egress: Two or more roads in/out
Access Width: 2 lanes (>24ft)
Access Condition: Surfaced-paved, grade<5%
Bridge Condition: None/nonflammable,load limit will not limit response
Access & Turnarounds: Access is <300 ft from facility w/turnaround
Facility Number/Sign: Marked and clearly visible
Defensible Space: 30 ft treated
Fuel Load (w/in 300 ft): Light
Fuel Type (w/in 300ft): Shrub or timber
Topography (w/in 300ft): Slope <5%
Roof Material: Combustible or no roof
Siding Material: Wood or open sided
Foundation: Closed, < 6in masonry exposed
Fences/Decks: None or noncombustible
Firewood: None
Propane Tanks: None
Water Supply: Pressurized hydrant(s) or fixed sprinkler system
Overhead Hazards: No overhead hazards
Safety Zones: No safety zone(s) in area
Additional Obstacles: None
Triage Category:
Hazmat:
Assessment Comments:



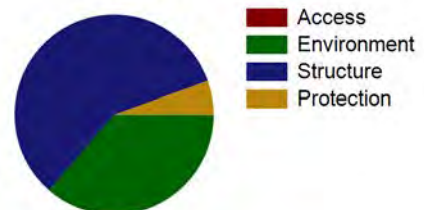
Score: 55
Rating: Low



Asset Priority Index (API):
55



Factors Driving the Ratings





NPS Wildand Fire Risk Assessment - Facility Assessment

For more information visit <https://wildfire-risk-assessments-nifc.hub.arcgis.com>

Facility: B-0671-N Kiosk - Entrance Station Fall River

Unit - Location: ROMO - North Entrance
FMSS ID: 24052
Field Crew: L Nelson
Last Site Visit Date: 1/29/2013

Rating: Low
Protection Level : Not Designated
Local ID: [Local_ID]
Lat(WGS84): 40° 24.2576' Long(WGS84): -105° 35.5148'

Recommended Treatments

Zone	Treatment Description	Pers Hours	Treatment Cycle	Treatment Priority	Treatment Status	Date Next Treatment Recommended	Equipment Description	Equip Qty
2	Mow dead/dying grass to less than 4 inches -	3		Unknown	Planned		-	



NPS Wildand Fire Risk Assessment - Facility Assessment

For more information visit <https://wildfire-risk-assessments-nifc.hub.arcgis.com>

Facility: B-0671-N Kiosk - Entrance Station Fall River

Unit - Location: ROMO - North Entrance

FMSS ID: 24052

Field Crew: L Nelson

Last Site Visit Date: 1/29/2013

Rating: Low

Protection Level : Not Designated

Local ID: [Local_ID]

Lat(WGS84): 40° 24.2576' Long(WGS84): -105° 35.5148'

Recommended Tactics

Triage Category	Tactic Description	Pers Hours	Equipment Description	Equip Qty
	Engine on scene - Duration of work would depend on fire conditions	3.00	-	



NPS Wildand Fire Risk Assessment - Facility Assessment

For more information visit <https://wildfire-risk-assessments-nifc.hub.arcgis.com>

Facility: B-0671-N Kiosk - Entrance Station Fall River

Unit - Location: ROMO - North Entrance
FMSS ID: 24052
Field Crew: L Nelson
Last Site Visit Date: 1/29/2013

Rating: Low
Protection Level : Not Designated
Local ID: [Local_ID]
Lat(WGS84): 40° 24.2576' Long(WGS84): -105° 35.5148'



2013_ROMO_24052_B-0671-N Kiosk - Entrance Station Fall River_D.jpg



2013_ROMO_24052_B-0671-N Kiosk - Entrance Station Fall River_C.jpg



2013_ROMO_24052_B-0671-N Kiosk - Entrance Station Fall River_B.jpg



2013_ROMO_24052_B-0671-N Kiosk - Entrance Station Fall River_A.jpg



NPS Wildand Fire Risk Assessment - Facility Assessment

For more information visit <https://wildfire-risk-assessments-nifc.hub.arcgis.com>

Facility: **INHOLDER STRUCTURE**

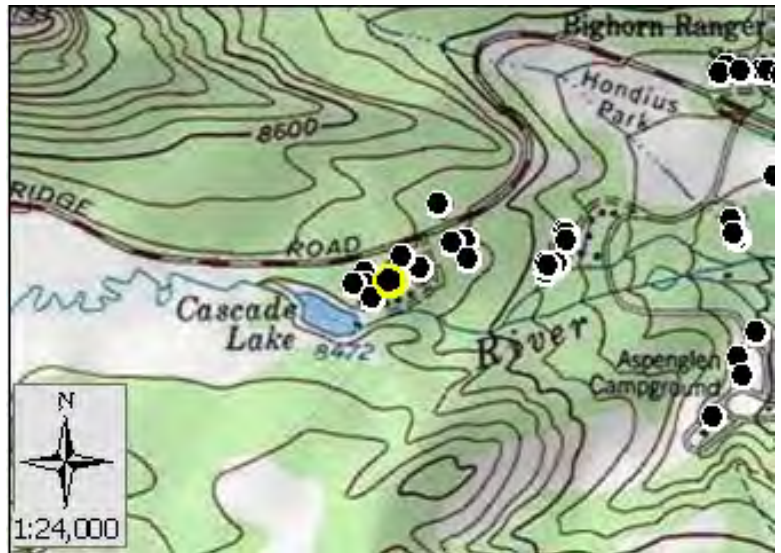
Unit - Location: ROMO - North Entrance
FMSS ID:
Structure Type: Building
Structure Use: Private
Owner: Private
Field Crew:
Last Site Visit Date:

Rating: PVTNotSurveyed
Protection Level : Not Designated
Resources of Concern Present? Unknown
Occupied?
Local ID: [Local_ID]
In a Community? Yes - Cascade Lake Aspenglen Inholder Structures
Lat(WGS84): 40° 24.0862' **Long(WGS84):** -105° 36.1159'

Primary Access: Road
Ingress/Egress: Two or more roads in/out
Access Width: 2 lanes (>24ft)
Access Condition: Surfaced-paved, grade<5%
Bridge Condition: None/nonflammable,load limit will not limit response
Access & Turnarounds: Access is <300 ft from facility w/turnaround
Facility Number/Sign: Marked and clearly visible
Defensible Space: >100ft treated
Fuel Load (w/in 300 ft): Moderate
Fuel Type (w/in 300ft): Grass,tundra,northern hardwood litter
Topography (w/in 300ft): Slope <5%
Roof Material:
Siding Material:
Foundation:
Fences/Decks:
Firewood:
Propane Tanks:
Water Supply: Pressurized hydrant(s) or fixed sprinkler system
Overhead Hazards: No overhead hazards
Safety Zones: Potential safety zone(s) in area
Additional Obstacles: None
Triage Category:
Hazmat:
Assessment Comments:



● Facility
■ NPS Boundary



Score:
Rating: PVTNotSurveyed



Asset Priority Index (API):
N/A



Factors Driving the Ratings



■ Access
■ Environment



NPS Wildand Fire Risk Assessment - Facility Assessment

For more information visit <https://wildfire-risk-assessments-nifc.hub.arcgis.com>

Facility: B-0366-N Comfort Station Aspenglen Campground

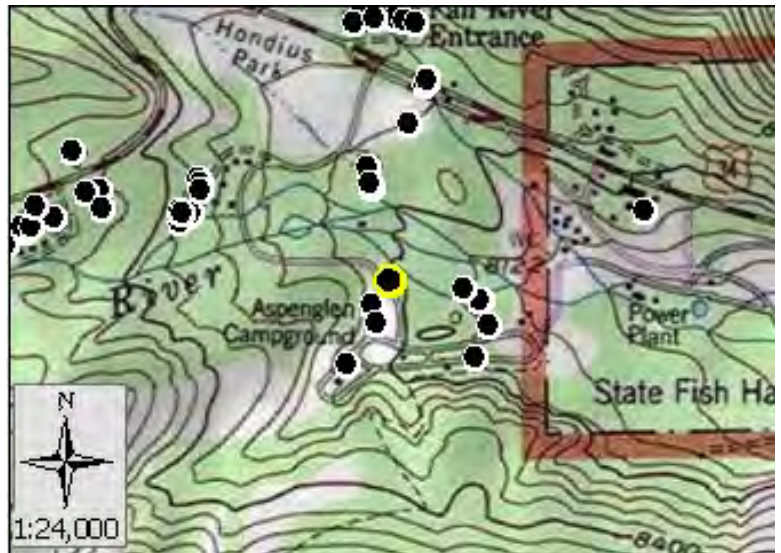
Unit - Location: ROMO - North Entrance
FMSS ID: 25280
Structure Type: Building
Structure Use: Public
Owner: NPS
Field Crew: L Nelson
Last Site Visit Date: 12/2/2013

Rating: Low
Protection Level : Full
Resources of Concern Present? Unknown
Occupied? No
Local ID: [Local_ID]
In a Community? Yes - Aspenglen Campground
Lat(WGS84): 40° 24.0276' **Long(WGS84):** -105° 35.5676'

Primary Access: Road
Ingress/Egress: One roads in/out
Access Width: 1.5 lanes (>18ft)
Access Condition: Surfaced-paved, grade<5%
Bridge Condition: None/nonflammable,load limit will not limit response
Access & Turnarounds: Access is <300 ft from facility w/turnaround
Facility Number/Sign: Marked and clearly visible
Defensible Space: 30 ft treated
Fuel Load (w/in 300 ft): Light
Fuel Type (w/in 300ft): Shrub or timber
Topography (w/in 300ft): Slope 5% to 20%
Roof Material: Noncombustible or not applicable
Siding Material: Wood or open sided
Foundation: Closed, < 6in masonry exposed
Fences/Decks: Combustible but separated from facility
Firewood: None
Propane Tanks: None
Water Supply: Pressurized hydrant(s) or fixed sprinkler system
Overhead Hazards: No overhead hazards
Safety Zones: No safety zone(s) in area
Additional Obstacles: None
Triage Category:
Hazmat:
Assessment Comments:



● Facility
■ NPS Boundary



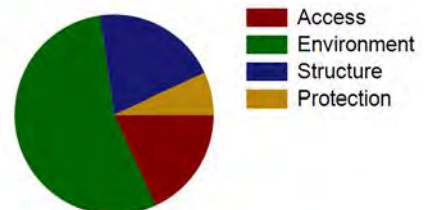
Score: 33
Rating: Low



Asset Priority Index (API):
67



Factors Driving the Ratings





NPS Wildand Fire Risk Assessment - Facility Assessment

For more information visit <https://wildfire-risk-assessments-nifc.hub.arcgis.com>

Facility: B-0366-N Comfort Station Aspenglen Campground

Unit - Location: ROMO - North Entrance
FMSS ID: 25280
Field Crew: L Nelson
Last Site Visit Date: 12/2/2013

Rating: Low
Protection Level : Full
Local ID: [Local_ID]
Lat(WGS84): 40° 24.0276' Long(WGS84): -105° 35.5676'

Recommended Treatments

Zone	Treatment Description	Pers Hours	Treatment Cycle	Treatment Priority	Treatment Status	Date Next Treatment Recommended	Equipment Description	Equip Qty
1	Clear adjacent and overhanging fuels to create 10 feet spacing between canopy and structure or chimney openings -	3		Unknown	Planned		-	
2	Flammable ground cover should be removed or isolated -	3		Unknown	Planned		-	



NPS Wildand Fire Risk Assessment - Facility Assessment

For more information visit <https://wildfire-risk-assessments-nifc.hub.arcgis.com>

Facility: B-0366-N Comfort Station Aspenglen Campground

Unit - Location: ROMO - North Entrance

FMSS ID: 25280

Field Crew: L Nelson

Last Site Visit Date: 12/2/2013

Rating: Low

Protection Level : Full

Local ID: [Local_ID]

Lat(WGS84): 40° 24.0276' Long(WGS84): -105° 35.5676'

Recommended Tactics

Triage Category	Tactic Description	Pers Hours	Equipment Description	Equip Qty
	Engine on scene -	3.00	-	



NPS Wildand Fire Risk Assessment - Facility Assessment

For more information visit <https://wildfire-risk-assessments-nifc.hub.arcgis.com>

Facility: B-0366-N Comfort Station Aspenglen Campground

Unit - Location: ROMO - North Entrance
FMSS ID: 25280
Field Crew: L Nelson
Last Site Visit Date: 12/2/2013

Rating: Low
Protection Level : Full
Local ID: [Local_ID]
Lat(WGS84): 40° 24.0276' Long(WGS84): -105° 35.5676'



2013_ROMO_25280_B-0366-N Comfort Station Aspenglen Campground_D.jpg



2013_ROMO_25280_B-0366-N Comfort Station Aspenglen Campground_C.jpg



2013_ROMO_25280_B-0366-N Comfort Station Aspenglen Campground_B.jpg



NPS Wildand Fire Risk Assessment - Facility Assessment

For more information visit <https://wildfire-risk-assessments-nifc.hub.arcgis.com>

Facility: B-0669-N Kiosk - Entrance Station Fall River

Unit - Location: ROMO - North Entrance

FMSS ID: 24048

Structure Type: Building

Structure Use: Admin

Owner: NPS

Field Crew: L Nelson

Last Site Visit Date: 12/2/2013

Rating: Moderate

Protection Level : Unknown

Resources of Concern Present? Unknown

Occupied? Yes

Local ID: [Local_ID]

In a Community? Yes - Fall River Entrance

Lat(WGS84): 40° 24.2522' Long(WGS84): -105° 35.518'

Primary Access: Road

Ingress/Egress: Two or more roads in/out

Access Width: 2 lanes (>24ft)

Access Condition: Surfaced-paved, grade<5%

Bridge Condition: None/nonflammable,load limit will not limit response

Access & Turnarounds: Access is <300 ft from facility w/turnaround

Facility Number/Sign: Marked and clearly visible

Defensible Space: 30 ft treated

Fuel Load (w/in 300 ft): Light

Fuel Type (w/in 300ft): Shrub or timber

Topography (w/in 300ft): Slope <5%

Roof Material: Combustible or no roof

Siding Material: Wood or open sided

Foundation: Closed, < 6in masonry exposed

Fences/Decks: None or noncombustible

Firewood: None

Propane Tanks:

Water Supply: Pressurized hydrant(s) or fixed sprinkler system

Overhead Hazards: No overhead hazards

Safety Zones: Potential safety zone(s) in area

Additional Obstacles: None

Triage Category:

Hazmat:

Assessment Comments:



● Facility
■ NPS Boundary



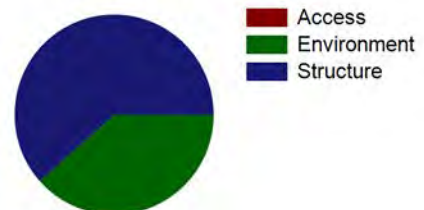
Score: 55
Rating: Moderate



Asset Priority Index (API):
55



Factors Driving the Ratings





NPS Wildand Fire Risk Assessment - Facility Assessment

For more information visit <https://wildfire-risk-assessments-nifc.hub.arcgis.com>

Facility: B-0669-N Kiosk - Entrance Station Fall River

Unit - Location: ROMO - North Entrance
FMSS ID: 24048
Field Crew: L Nelson
Last Site Visit Date: 12/2/2013

Rating: Moderate
Protection Level : Unknown
Local ID: [Local_ID]
Lat(WGS84): 40° 24.2522' Long(WGS84): -105° 35.518'

Recommended Treatments

Zone	Treatment Description	Pers Hours	Treatment Cycle	Treatment Priority	Treatment Status	Date Next Treatment Recommended	Equipment Description	Equip Qty
2	Mow dead/dying grass to less than 4 inches -	3		Unknown	Planned		-	



NPS Wildand Fire Risk Assessment - Facility Assessment

For more information visit <https://wildfire-risk-assessments-nifc.hub.arcgis.com>

Facility: B-0669-N Kiosk - Entrance Station Fall River

Unit - Location: ROMO - North Entrance

FMSS ID: 24048

Field Crew: L Nelson

Last Site Visit Date: 12/2/2013

Rating: Moderate

Protection Level : Unknown

Local ID: [Local_ID]

Lat(WGS84): 40° 24.2522' Long(WGS84): -105° 35.518'

Recommended Tactics

Triage Category	Tactic Description	Pers Hours	Equipment Description	Equip Qty
	Remove flammable materials -	3.00	-	



NPS Wildand Fire Risk Assessment - Facility Assessment

For more information visit <https://wildfire-risk-assessments-nifc.hub.arcgis.com>

Facility: B-0669-N Kiosk - Entrance Station Fall River

Unit - Location: ROMO - North Entrance
FMSS ID: 24048
Field Crew: L Nelson
Last Site Visit Date: 12/2/2013

Rating: Moderate
Protection Level : Unknown
Local ID: [Local_ID]
Lat(WGS84): 40° 24.2522' Long(WGS84): -105° 35.518'



2013_ROMO_24048_B-0669-N Kiosk - Entrance Station Fall River_D.jpg



2013_ROMO_24048_B-0669-N Kiosk - Entrance Station Fall River_C.jpg



2013_ROMO_24048_B-0669-N Kiosk - Entrance Station Fall River_B.jpg



2013_ROMO_24048_B-0669-N Kiosk - Entrance Station Fall River_A.jpg