

# EAST CANYON CO-SJD-000416

## Pilot Map 6/18/20

IR Perimeter 6/18/20 @ 1959 - 2,900 ac.

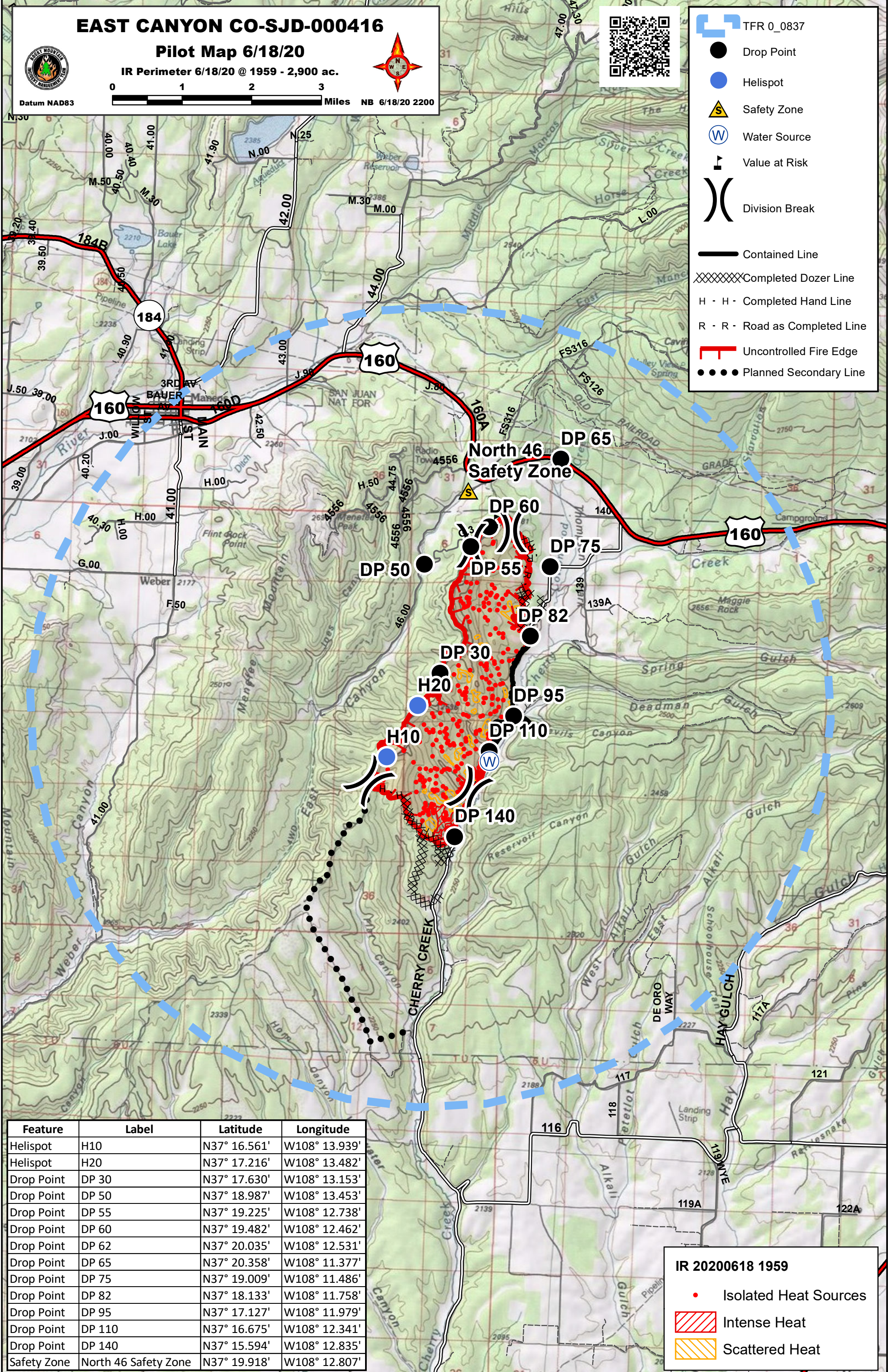


Datum NAD83

0 1 2 3 Miles NB 6/18/20 2200



- TFR 0\_0837
- Drop Point
- Helispot
- Safety Zone
- Water Source
- Value at Risk
- Division Break
- Contained Line
- Completed Dozer Line
- Completed Hand Line
- Road as Completed Line
- Uncontrolled Fire Edge
- Planned Secondary Line



Feature	Label	Latitude	Longitude
Helispot	H10	N37° 16.561'	W108° 13.939'
Helispot	H20	N37° 17.216'	W108° 13.482'
Drop Point	DP 30	N37° 17.630'	W108° 13.153'
Drop Point	DP 50	N37° 18.987'	W108° 13.453'
Drop Point	DP 55	N37° 19.225'	W108° 12.738'
Drop Point	DP 60	N37° 19.482'	W108° 12.462'
Drop Point	DP 62	N37° 20.035'	W108° 12.531'
Drop Point	DP 65	N37° 20.358'	W108° 11.377'
Drop Point	DP 75	N37° 19.009'	W108° 11.486'
Drop Point	DP 82	N37° 18.133'	W108° 11.758'
Drop Point	DP 95	N37° 17.127'	W108° 11.979'
Drop Point	DP 110	N37° 16.675'	W108° 12.341'
Drop Point	DP 140	N37° 15.594'	W108° 12.835'
Safety Zone	North 46 Safety Zone	N37° 19.918'	W108° 12.807'

**IR 20200618 1959**

- Isolated Heat Sources
- Intense Heat
- Scattered Heat