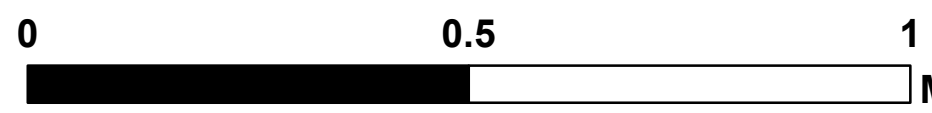


EAST CANYON CO-SJD-000416

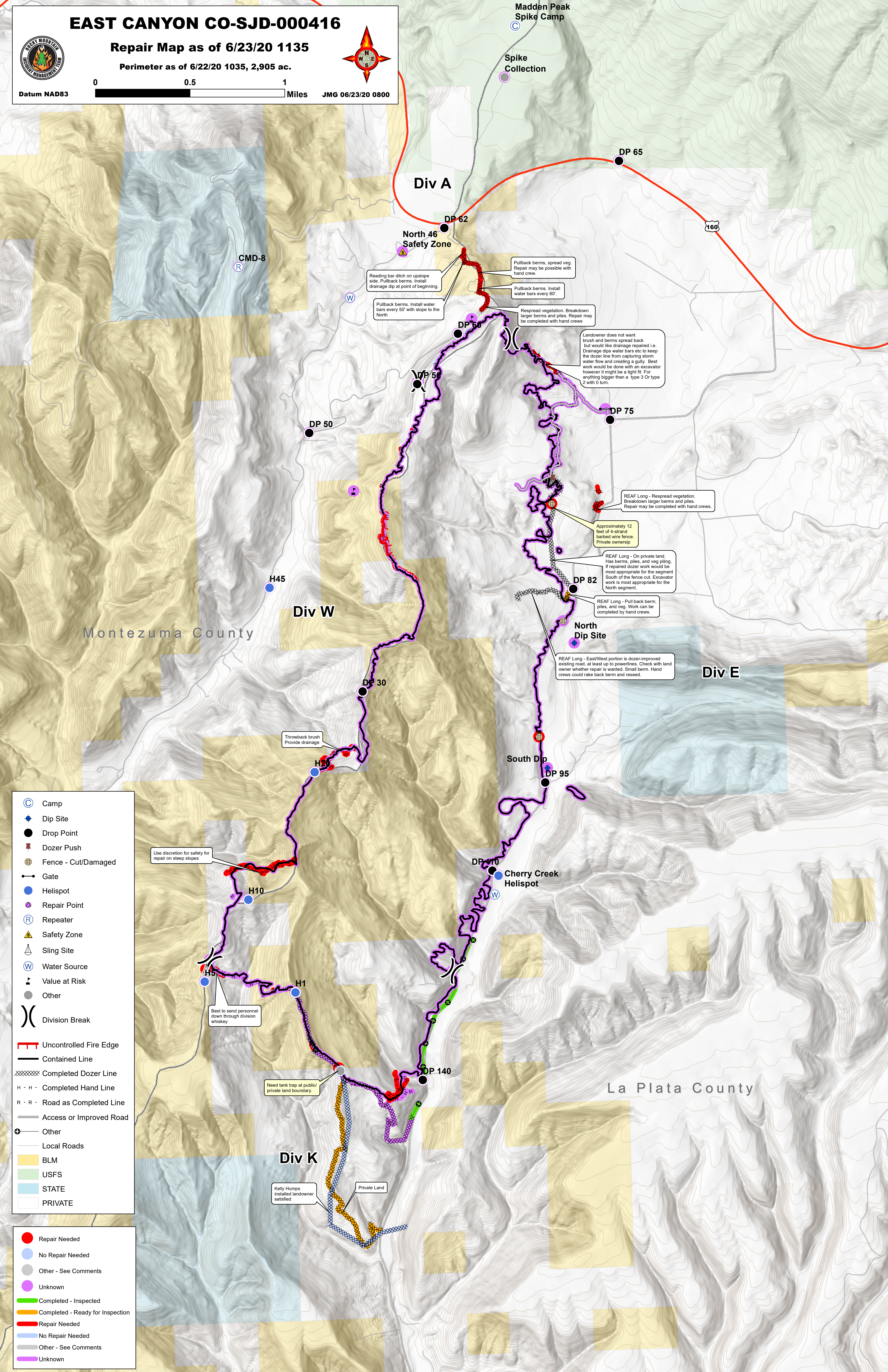
Repair Map as of 6/23/20 1135

Perimeter as of 6/22/20 1035, 2,905 ac.



Datum NAD83

JMG 06/23/20 0800



- Camp
- Dip Site
- Drop Point
- Dozer Push
- Fence - Cut/Damaged
- Gate
- Helispot
- Repair Point
- Repeater
- Safety Zone
- Sling Site
- Water Source
- Value at Risk
- Other
- Division Break

- Uncontrolled Fire Edge
- Contained Line
- Completed Dozer Line
- Completed Hand Line
- Road as Completed Line
- Access or Improved Road
- Other
- Local Roads
- BLM
- USFS
- STATE
- PRIVATE

- Repair Needed
- No Repair Needed
- Other - See Comments
- Unknown
- Completed - Inspected
- Completed - Ready for Inspection
- Repair Needed
- No Repair Needed
- Other - See Comments
- Unknown

North 46 Safety Zone

Reading bar ditch on upslope side. Pullback berms. Install drainage dip at point of beginning.

Pullback berms. Install water bars every 50' with slope to the North

Pullback berms, spread veg. Repair may be possible with hand crew.

Pullback berms. Install water bars every 80'.

Respread vegetation. Breakdown larger berms and piles. Repair may be completed with hand crews

Landowner does not want brush and berms spread back but would like drainage repaired i.e. Drainage dips water bars etc to keep the dozer line from capturing storm water flow and creating a gully. Best work would be done with an excavator however it might be a tight fit. For anything bigger than a type 3 Or type 2 with 0 turn.

REAF Long - Respread vegetation. Breakdown larger berms and piles. Repair may be completed with hand crews.

Approximately 12 feet of 4-strand barbed wire fence. Private ownership

REAF Long - On private land. Has berms, piles, and veg piling. If repaired dozer work would be most appropriate for the segment South of the fence cut. Excavator work is most appropriate for the North segment.

REAF Long - Pull back berm, piles, and veg. Work can be completed by hand crews.

REAF Long - East/West portion is dozer-improved existing road, at least up to powerlines. Check with land owner whether repair is wanted. Small berm. Hand crews could rake back berm and reseed.

Use discretion for safety for repair on steep slopes

Best to send personnel down through division whiskey

Need tank trap at public/private land boundary

Kelly Humps installed landowner satisfied

Private Land

La Plata County

Montezuma County