

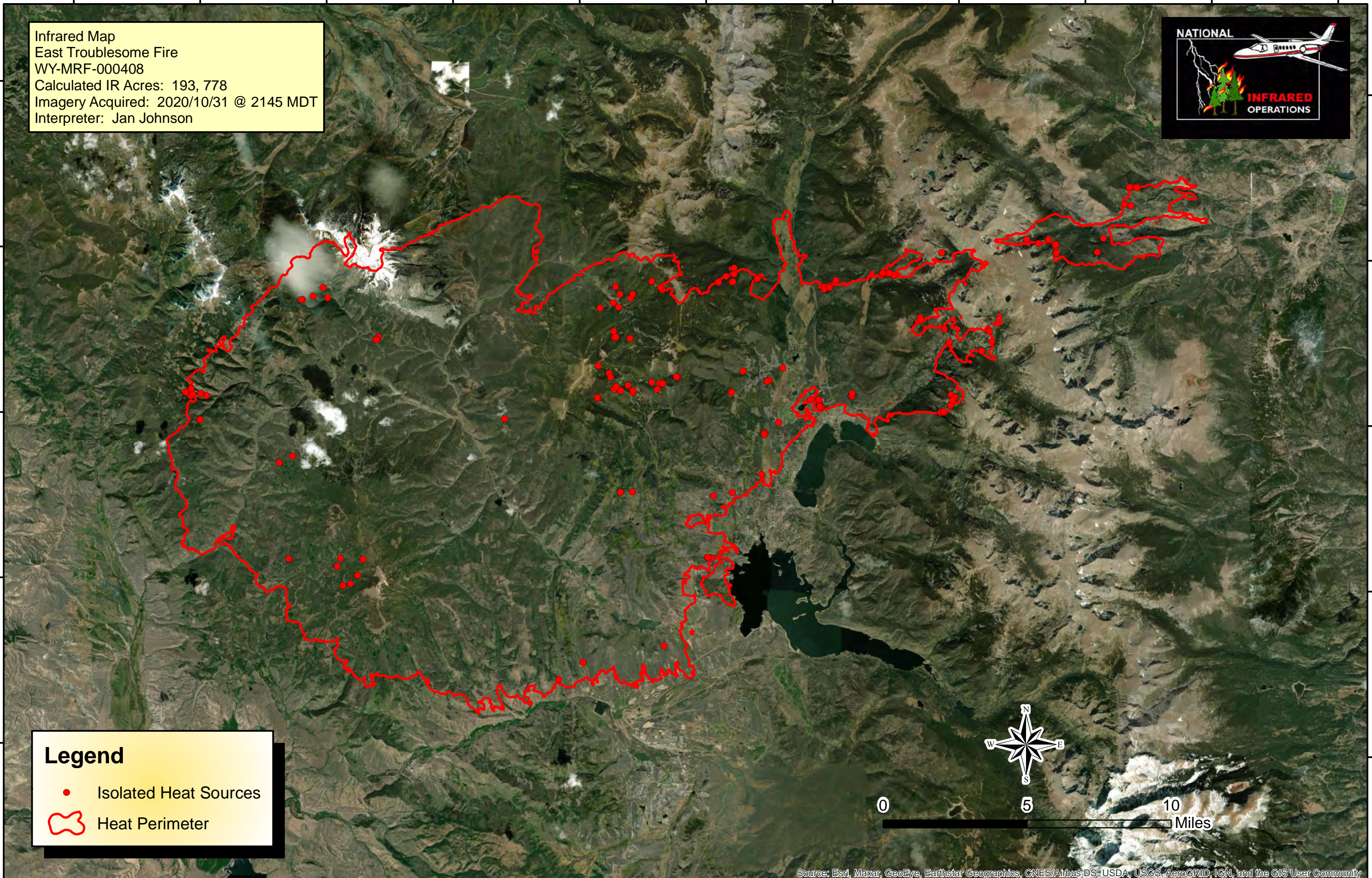
106°20'0"W 106°15'0"W 106°10'0"W 106°5'0"W 106°0'0"W 105°55'0"W 105°50'0"W 105°45'0"W 105°40'0"W 105°35'0"W 105°30'0"W

Infrared Map
East Troublesome Fire
WY-MRF-000408
Calculated IR Acres: 193, 778
Imagery Acquired: 2020/10/31 @ 2145 MDT
Interpreter: Jan Johnson



40°25'0"N
40°20'0"N
40°15'0"N
40°10'0"N
40°5'0"N

40°25'0"N
40°20'0"N
40°15'0"N
40°10'0"N
40°5'0"N



Legend
● Isolated Heat Sources
🔴 Heat Perimeter

Source: Esri, Maxar, GeoEye, Earthstar Geographics, CNES/Airbus DS, USDA, USGS, AeroGRID, IGN, and the GIS User Community

106°20'0"W 106°15'0"W 106°10'0"W 106°5'0"W 106°0'0"W 105°55'0"W 105°50'0"W 105°45'0"W 105°40'0"W 105°35'0"W 105°30'0"W