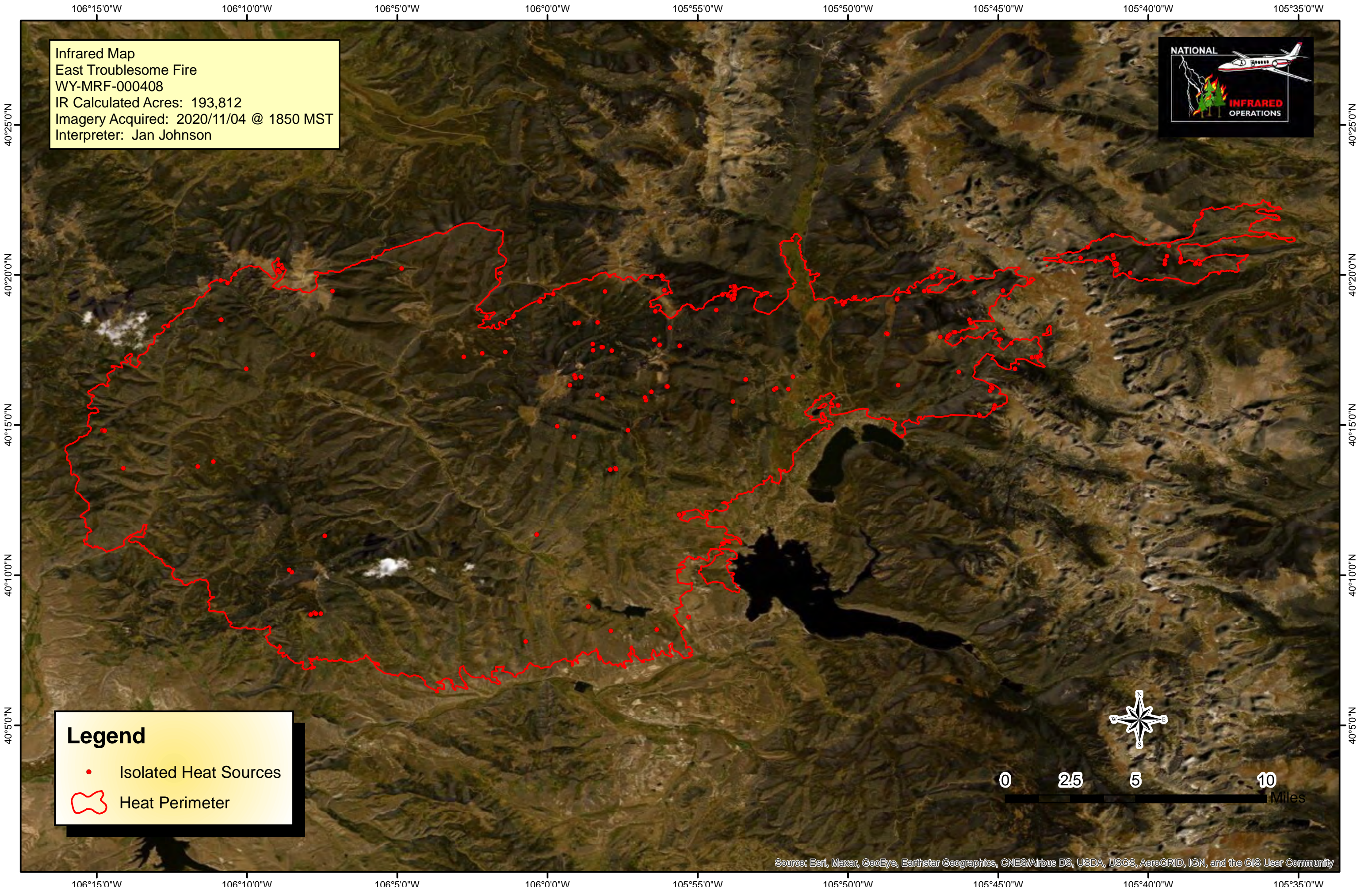
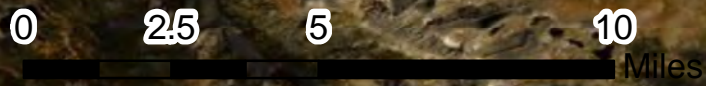


Infrared Map
East Troublesome Fire
WY-MRF-000408
IR Calculated Acres: 193,812
Imagery Acquired: 2020/11/04 @ 1850 MST
Interpreter: Jan Johnson



Legend

- Isolated Heat Sources
- Heat Perimeter



Source: Esri, Maxar, GeoEye, Earthstar Geographics, CNES/Airbus DS, USDA, USGS, AeroGRID, IGN, and the GIS User Community