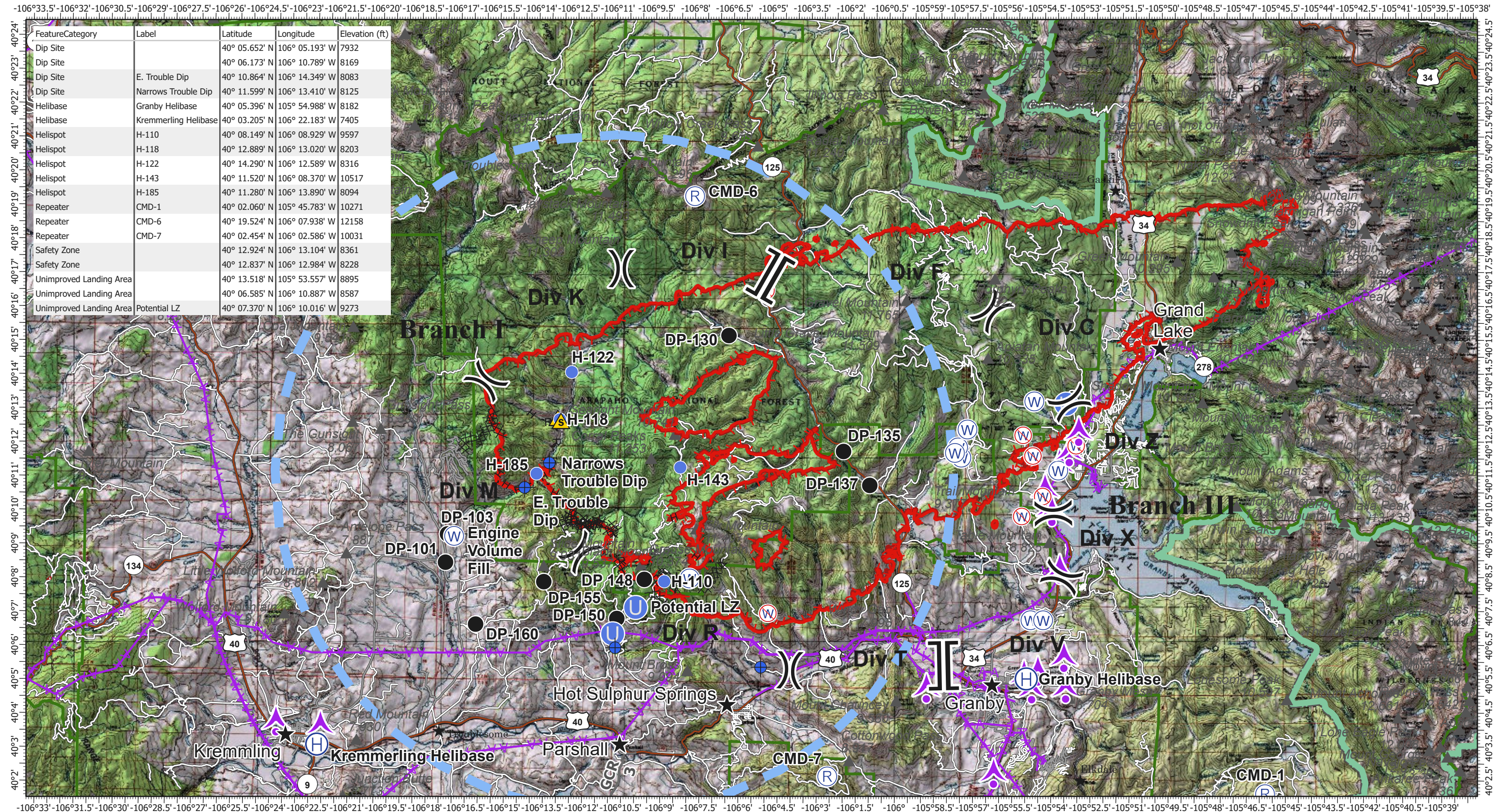


# Air Operations - East Troublesome

10/22/2020



FeatureCategory	Label	Latitude	Longitude	Elevation (ft)
Dip Site		40° 05.652' N	106° 05.193' W	7932
Dip Site		40° 06.173' N	106° 10.789' W	8169
Dip Site	E. Trouble Dip	40° 10.864' N	106° 14.349' W	8083
Dip Site	Narrows Trouble Dip	40° 11.599' N	106° 13.410' W	8125
Helibase	Granby Helibase	40° 05.396' N	105° 54.988' W	8182
Helibase	Kremmerling Helibase	40° 03.205' N	106° 22.183' W	7405
Helispot	H-110	40° 08.149' N	106° 08.929' W	9597
Helispot	H-118	40° 12.889' N	106° 13.020' W	8203
Helispot	H-122	40° 14.290' N	106° 12.589' W	8316
Helispot	H-143	40° 11.520' N	106° 08.370' W	10517
Helispot	H-185	40° 11.280' N	106° 13.890' W	8094
Repeater	CMD-1	40° 02.060' N	105° 45.783' W	10271
Repeater	CMD-6	40° 19.524' N	106° 07.938' W	12158
Repeater	CMD-7	40° 02.454' N	106° 02.586' W	10031
Safety Zone		40° 12.924' N	106° 13.104' W	8361
Safety Zone		40° 12.837' N	106° 12.984' W	8228
Unimproved Landing Area		40° 13.518' N	105° 53.557' W	8895
Unimproved Landing Area		40° 06.585' N	106° 10.887' W	8587
Unimproved Landing Area	Potential LZ	40° 07.370' N	106° 10.016' W	9273

**EAST TROUBLESOME WY-MRF-000408**  
 Fire Perimeter as of 10/22/20 0030 hrs  
 125,602 Acres

- 🔴 Aerial Hazard
- 📍 Dip Site
- Drop Point
- Ⓜ Helibase
- Unimproved Landing Area
- Helispot
- Ⓜ Repeater
- ⚠ Safety Zone
- 🌊 Water Source
- 🚫 Restricted Water Source
- ) Division Break
- ]] Branch Break
- 🔴 Uncontrolled Fire Edge
- XXXX Completed Dozer Line
- H - Completed Hand Line
- R - Road as Completed Line
- X Proposed Dozer Line
- Planned Fire Line
- 🔵 Temporary Flight Restriction
- 🔴 Fire Perimeter
- 🟢 FS Proclaimed Forest
- 🌲 Wilderness

0 2.5 5 Miles