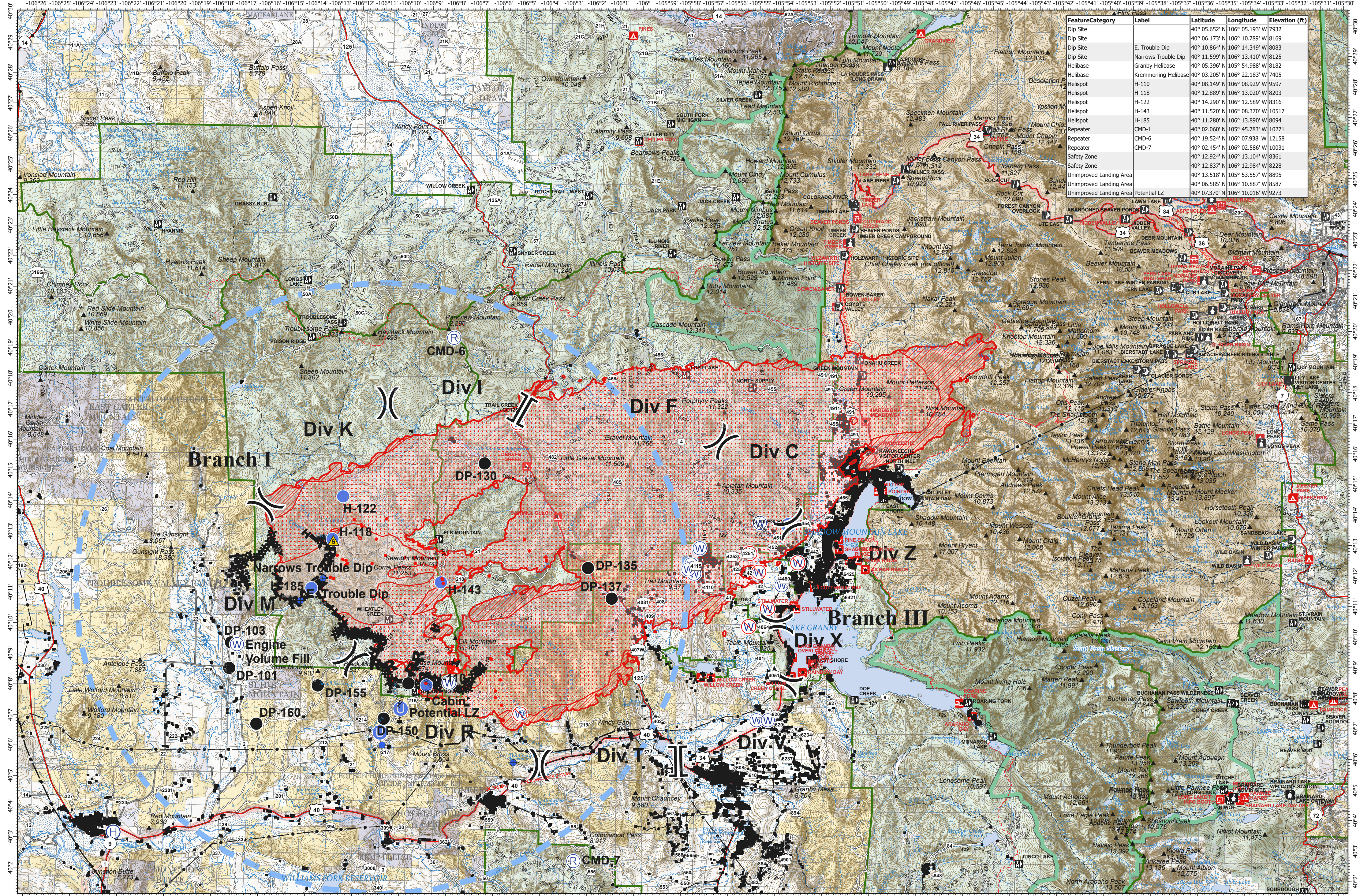


Air Operations - East Troublesome

October 22, 2020



FeatureCategory	Label	Latitude	Longitude	Elevation (ft)
Dip Site	Dip Site	40° 05.652' N	106° 05.193' W	7932
Dip Site	Dip Site	40° 06.173' N	106° 10.789' W	8169
Dip Site	E. Trouble Dip	40° 10.864' N	106° 14.349' W	8083
Dip Site	Narrows Trouble Dip	40° 11.599' N	106° 13.410' W	8125
Helibase	Granby Helibase	40° 05.396' N	106° 54.988' W	8182
Helibase	Kremmerling Helibase	40° 03.205' N	106° 22.183' W	7405
Helispot	H-110	40° 08.149' N	106° 08.929' W	9597
Helispot	H-118	40° 12.889' N	106° 13.020' W	8203
Helispot	H-122	40° 14.290' N	106° 12.589' W	8316
Helispot	H-143	40° 11.520' N	106° 08.370' W	10517
Helispot	H-185	40° 11.280' N	106° 13.890' W	8094
Repeater	CMD-1	40° 02.060' N	106° 05.783' W	10271
Repeater	CMD-6	40° 19.524' N	106° 07.938' W	12158
Repeater	CMD-7	40° 02.454' N	106° 02.586' W	10031
Safety Zone	Safety Zone	40° 12.924' N	106° 13.104' W	8361
Safety Zone	Safety Zone	40° 12.837' N	106° 12.984' W	8228
Unimproved Landing Area	Unimproved Landing Area	40° 13.518' N	106° 05.577' W	8895
Unimproved Landing Area	Unimproved Landing Area	40° 06.585' N	106° 10.887' W	8587
Unimproved Landing Area	Potential LZ	40° 07.370' N	106° 10.016' W	9273

EAST TROUBLESOME
WY-MRF-000408
 Fire Perimeter as of
 10/22/20 0030 hrs
 125,602 Acres

- IR Isolated Heat
- Helibase
- R Repeater
- ⚠ Restricted Water Source
- Branch Break
- IR Scattered Heat
- ⬇ Dip Site
- Unimproved Landing Area
- W Water Source
- ⚠ Value at Risk
- Completed Dozer Line
- IR Intense Heat
- Drop Point
- Helispot
- W Water Source
- ⚠ Division Break
- Completed Hand Line
- ⚠ Proposed Dozer Line
- Temporary Flight Restriction
- ⚠ World Hillshade

