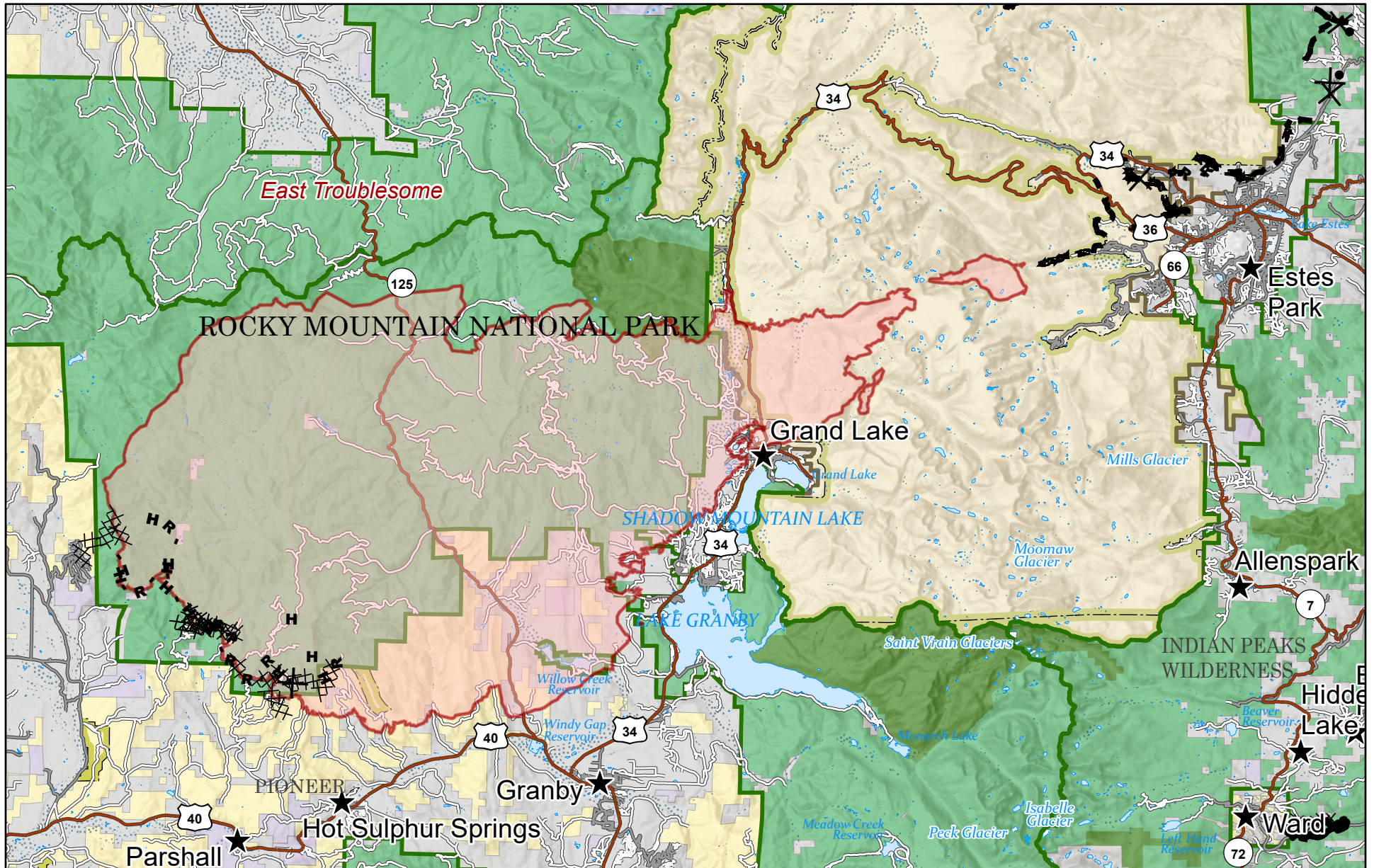


East Troublesome Fire

October 23, 2020



Fire Perimeter as of
10/22/20 1535 hrs
170,163 Acres

- Fire Perimeter
- Contained Line
- Completed Dozer Line
- Completed Hand Line
- Road as Completed Line
- Proposed Dozer Line
- Planned Fire Line

- Fraser Experimental Forest
- Forest Service
- Bureau of Land Management
- National Park Service
- State|Other or Unknown State Land|State Other or Unknown
- State
- State|State Park and Recreation|State Park

