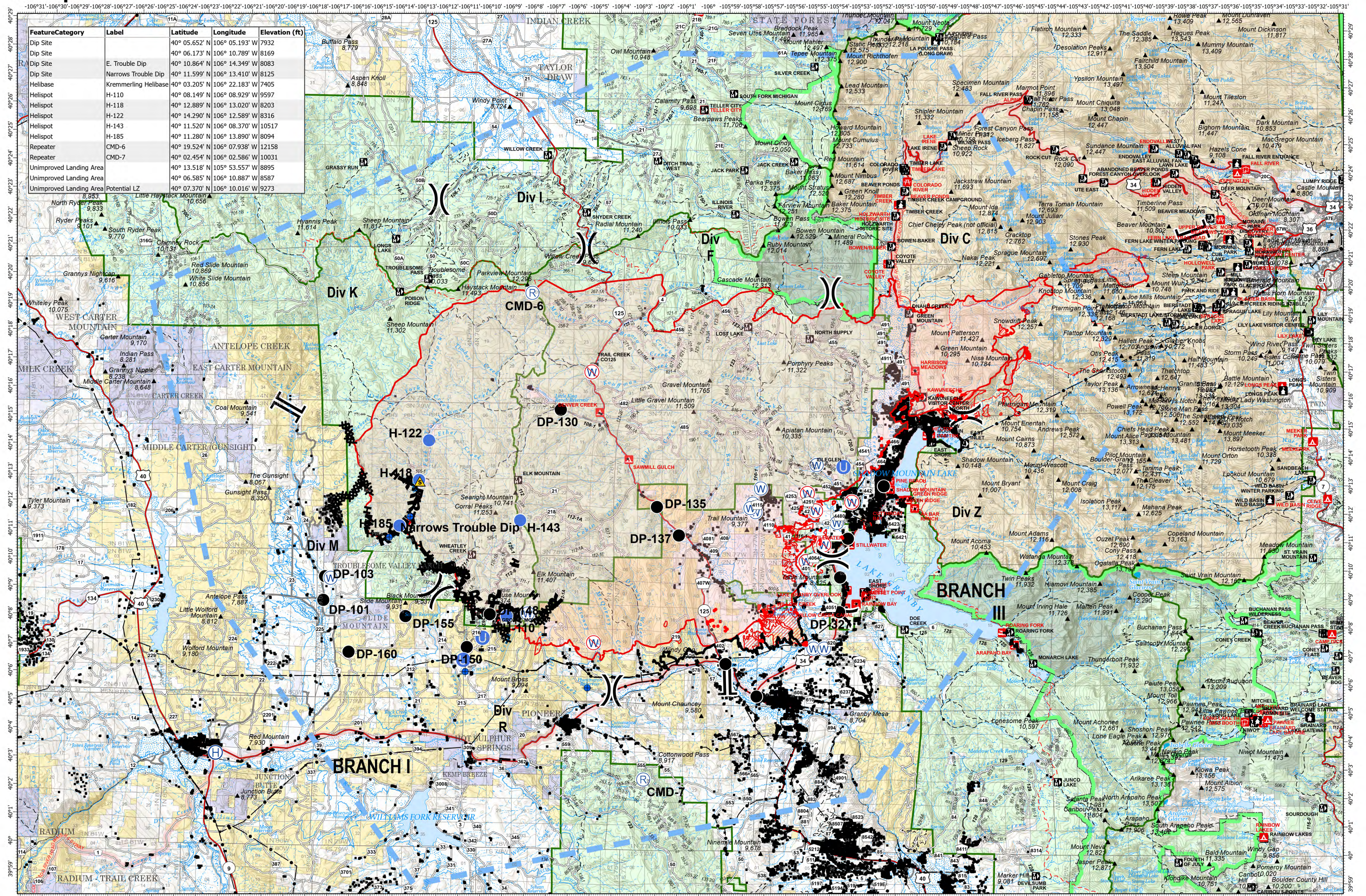


Air Operations - East Troublesome

October 24, 2020



FeatureCategory	Label	Latitude	Longitude	Elevation (ft)
Dip Site		40° 05.652' N	106° 05.193' W	7932
Dip Site		40° 06.173' N	106° 10.789' W	8169
Dip Site	E. Trouble Dip	40° 10.864' N	106° 14.349' W	8083
Dip Site	Narrows Trouble Dip	40° 11.599' N	106° 13.410' W	8125
Helibase	Kremmerling Helibase	40° 03.205' N	106° 22.183' W	7405
Helispot	H-110	40° 08.149' N	106° 08.929' W	9597
Helispot	H-118	40° 12.889' N	106° 13.020' W	8203
Helispot	H-122	40° 14.290' N	106° 12.589' W	8316
Helispot	H-143	40° 11.520' N	106° 08.370' W	10517
Helispot	H-185	40° 11.280' N	106° 13.890' W	8094
Repeater	CMD-6	40° 19.524' N	106° 07.938' W	12158
Repeater	CMD-7	40° 02.454' N	106° 02.586' W	10031
Unimproved Landing Area		40° 13.518' N	105° 53.557' W	8895
Unimproved Landing Area		40° 06.585' N	106° 10.887' W	8587
Unimproved Landing Area	Potential LZ	40° 07.370' N	106° 10.016' W	9273

EAST TROUBLESOME
WY-MRF-000408
 Fire Perimeter as of
 10/24/20 0040 hrs
 189,389 Acres

● IR Isolated Heat	H Helibase	▲ Safety Zone	 Division Break	 Completed Dozer Line	 Temporary Flight Restriction	Label_Point
● Dip Site	 Unimproved Landing Area	W Water Source	 Branch Break	 Completed Hand Line	 IR Scattered Heat	World Hillshade
● Drop Point	● Helispot	W Restricted Water Source	 Contained Line	 Proposed Dozer Line	 IR Intense Heat	
R Repeater	▲ Value at Risk					

