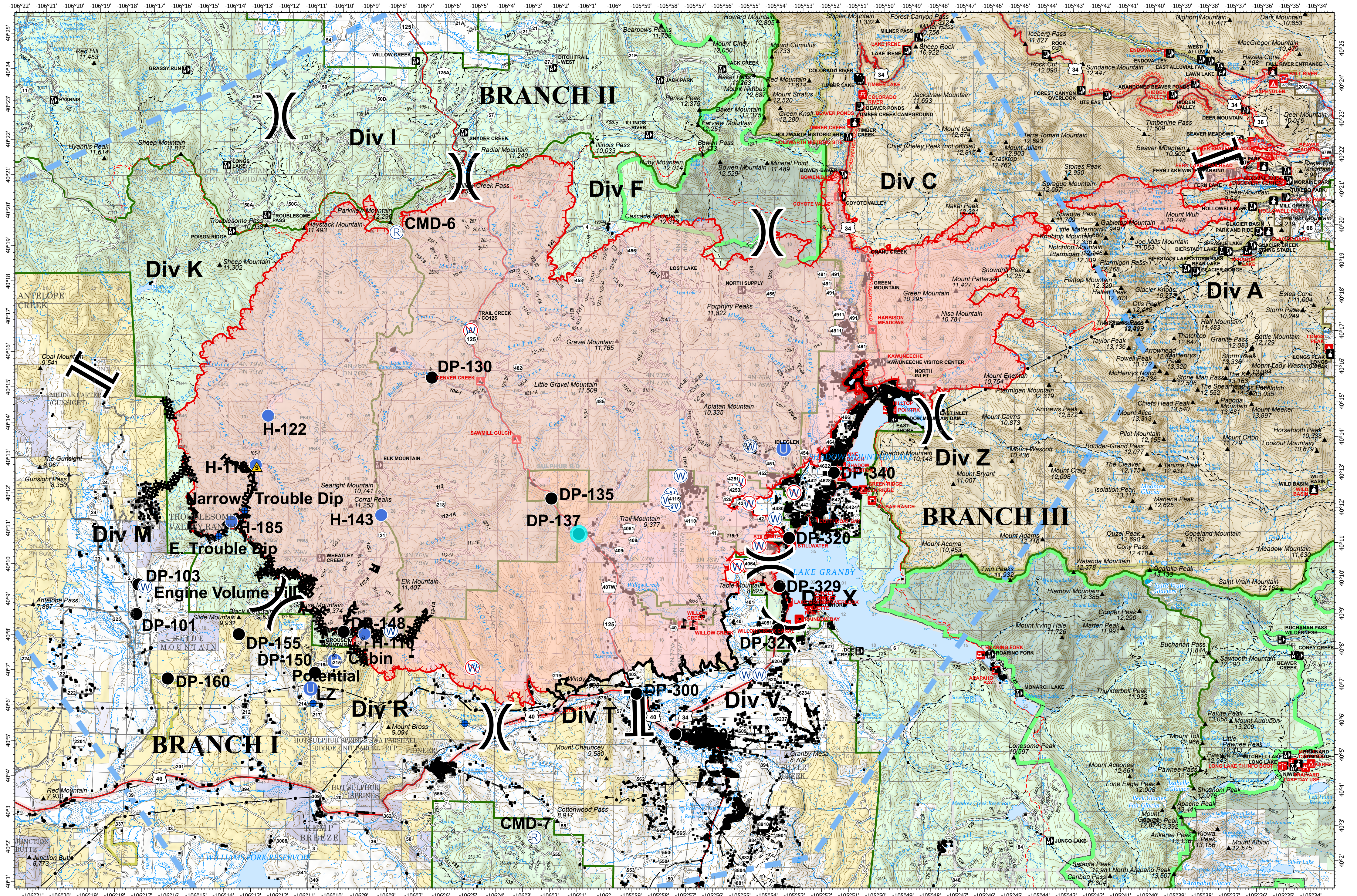


# OPERATIONS - EAST TROUBLESOME CREEK - GRAND ZONE

OCTOBER 25, 2020



**EAST TROUBLESOME CREEK - GRAND ZONE**  
**WY-MRF-000408**

10/24/20 1702 hrs  
 192,560 Acres

- Dip Site
- Drop Point
- ⊙ Helibase
- Unimproved Landing Area
- ⊙ Repeater
- ▲ Safety Zone
- ⊙ Water Source
- ⬆ Restricted Water Source
- ⬆ Value at Risk
- ⌋ Division Break
- ⌋ Branch Break
- Uncontrolled Fire Edge
- Contained Line
- Completed Dozer Line
- Completed Hand Line
- Road as Completed Line
- ✕ Proposed Dozer Line
- Temporary Flight Restriction

0 2 4 Miles



Map Projection: UTM Zone 13, NAD83

