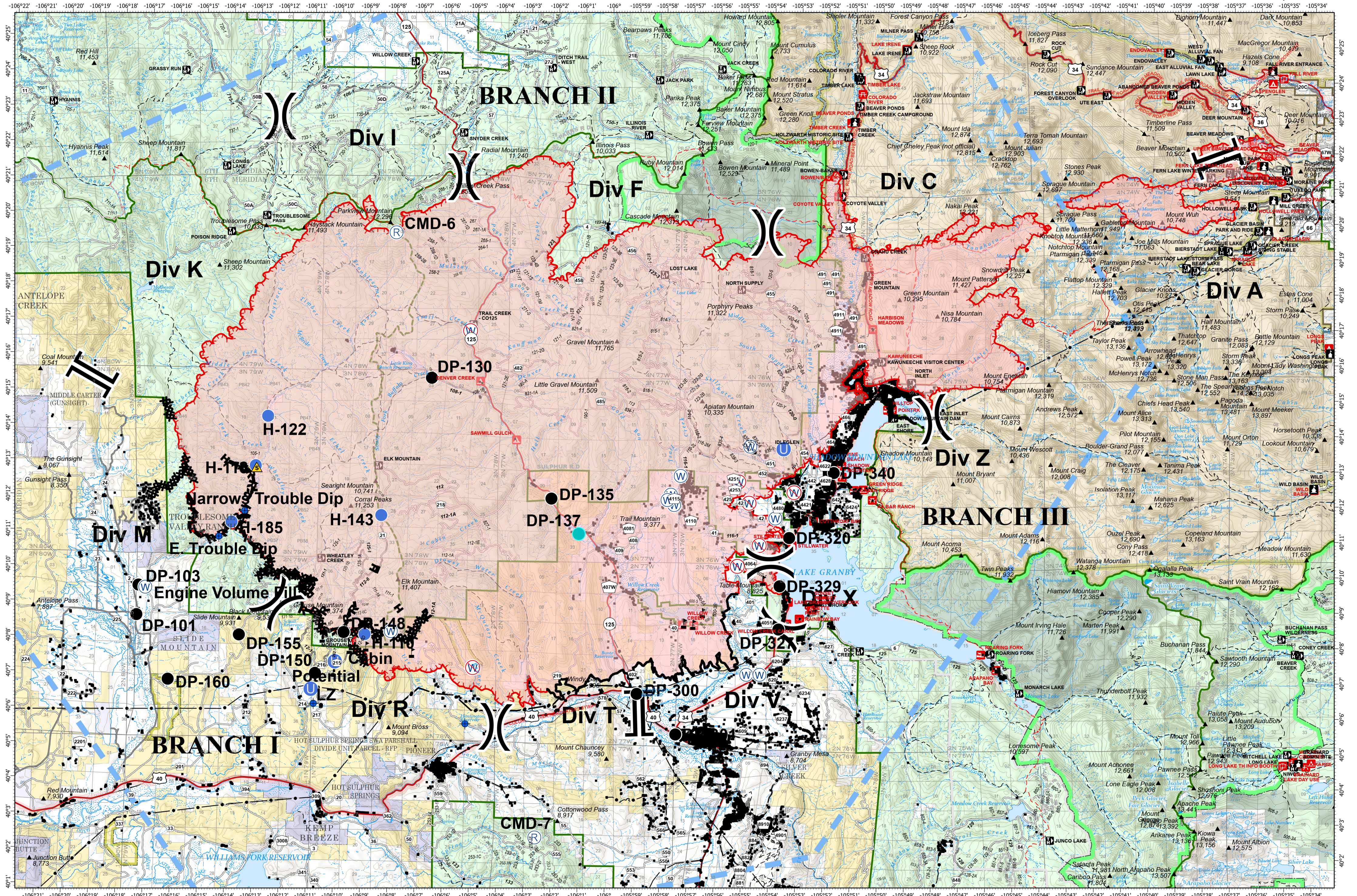


# OPERATIONS - EAST TROUBLESOME CREEK - GRAND ZONE

# OCTOBER 25, 2020



**EAST TROUBLESOME CREEK - GRAND ZONE**  
**WY-MRF-000408**

10/24/20 1702 hrs  
192,560 Acres

- Dip Site
- Drop Point
- Helibase
- Unimproved Landing Area
- Helispot
- Repeater
- Safety Zone
- Water Source
- Restricted Water Source
- Value at Risk
- Division Break
- Branch Break
- Uncontrolled Fire Edge
- Contained Line
- Completed Dozer Line
- Completed Hand Line
- Road as Completed Line
- Proposed Dozer Line
- Temporary Flight Restriction

0 2 4 Miles  
Map Projection: UTM Zone 13, NAD83

