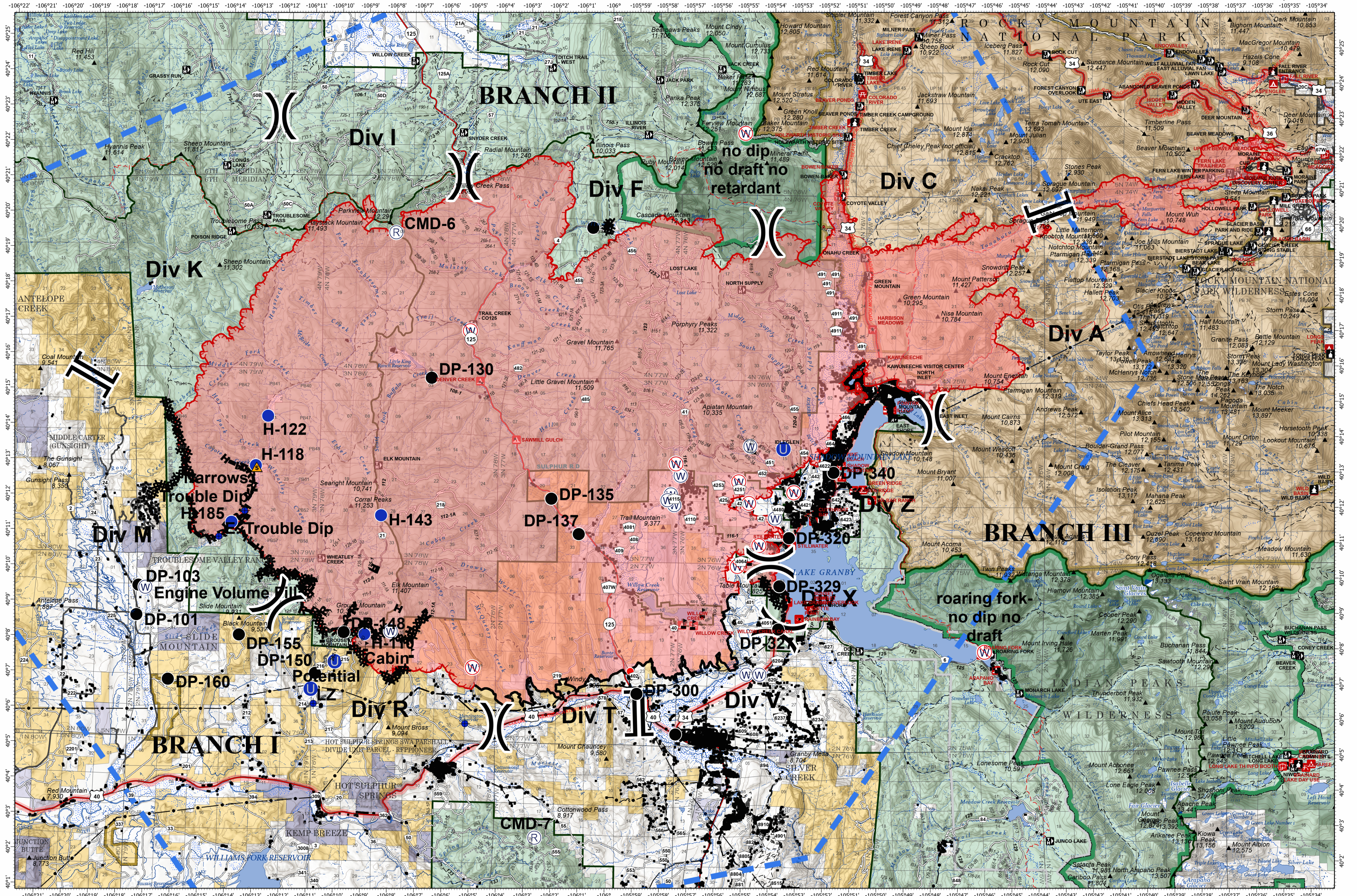


# OPERATIONS - EAST TROUBLESOME CREEK - GRAND ZONE

OCTOBER 26, 2020



**EAST TROUBLESOME CREEK - GRAND ZONE**  
**WY-MRF-000408**

10/24/20 1702 hrs  
 192,560 Acres

- ◆ Dip Site
- Drop Point
- ⊕ Helibase
- Unimproved Landing Area
- Helispot
- Hot Spot
- Ⓡ Repeater
- ▲ Safety Zone
- Ⓜ Water Source
- Ⓜ Restricted Water Source
- Ⓜ Value at Risk
- Ⓜ Division Break
- || Branch Break
- Uncontrolled Fire Edge
- Contained Line
- Ⓜ Completed Dozer Line
- Ⓜ Completed Hand Line
- Ⓜ Road as Completed Line
- Ⓜ Proposed Dozer Line
- ▬ Temporary Flight Restriction
- World Hillshade

0 2 4 Miles

Map Projection: UTM Zone 13, NAD83