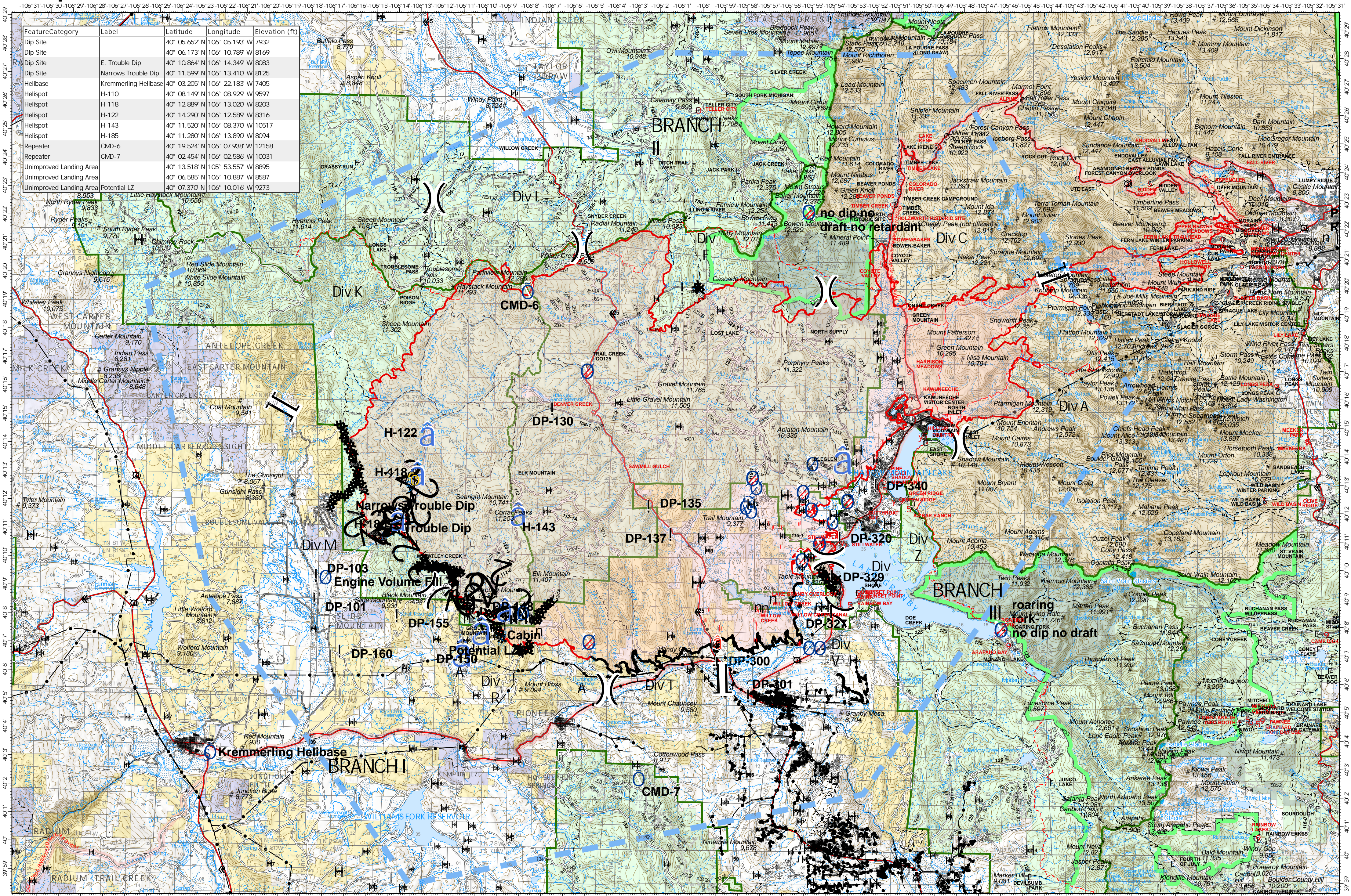


Air Operations - East Troublesome Creek - Grand Zone

October 26, 2020



| FeatureCategory | Label | Latitude | Longitude | Elevation (ft) |
|-------------------------|----------------------|---------------|----------------|----------------|
| Dip Site | | 40° 05.652' N | 106° 05.193' W | 7932 |
| Dip Site | | 40° 06.173' N | 106° 10.789' W | 8169 |
| Dip Site | E. Trouble Dip | 40° 10.864' N | 106° 14.349' W | 8083 |
| Dip Site | Narrows Trouble Dip | 40° 11.599' N | 106° 13.410' W | 8125 |
| Helibase | Kremmerling Helibase | 40° 03.205' N | 106° 22.183' W | 7405 |
| Helispot | H-110 | 40° 08.149' N | 106° 08.929' W | 9597 |
| Helispot | H-118 | 40° 12.889' N | 106° 13.020' W | 8203 |
| Helispot | H-122 | 40° 14.290' N | 106° 12.589' W | 8316 |
| Helispot | H-143 | 40° 11.520' N | 106° 08.370' W | 10517 |
| Helispot | H-185 | 40° 11.280' N | 106° 13.890' W | 8094 |
| Repeater | CMD-6 | 40° 19.524' N | 106° 07.938' W | 12158 |
| Repeater | CMD-7 | 40° 02.454' N | 106° 02.586' W | 10031 |
| Unimproved Landing Area | | 40° 13.518' N | 106° 53.557' W | 8895 |
| Unimproved Landing Area | | 40° 06.585' N | 106° 10.887' W | 8587 |
| Unimproved Landing Area | Potential LZ | 40° 07.370' N | 106° 10.016' W | 9273 |

EAST TROUBLESOME CREEK - GRAND ZONE
 Fire Perimeter as of 10/24/20 1702 hrs
 192,560 Acres

- ! IR Isolated Heat
- ⊕ Helibase
- ⊙ Hot Spot
- ⊖ Water Source
-) (Division Break
- A Dip Site
- ⊕ Unimproved Landing Area
- ⊙ Repeater
- ⊖ Restricted Water Source
-] [Branch Break
- ! Drop Point
- ⊕ Helispot
- ⊙ Safety Zone
- ⊖ Value at Risk
- Contained Line
- ⊗ Completed Dozer Line
- H 2 Completed Hand Line
- R 2 Road as Completed
- D Proposed Dozer Line
- Temporary Flight Restriction
- World Hillshade

