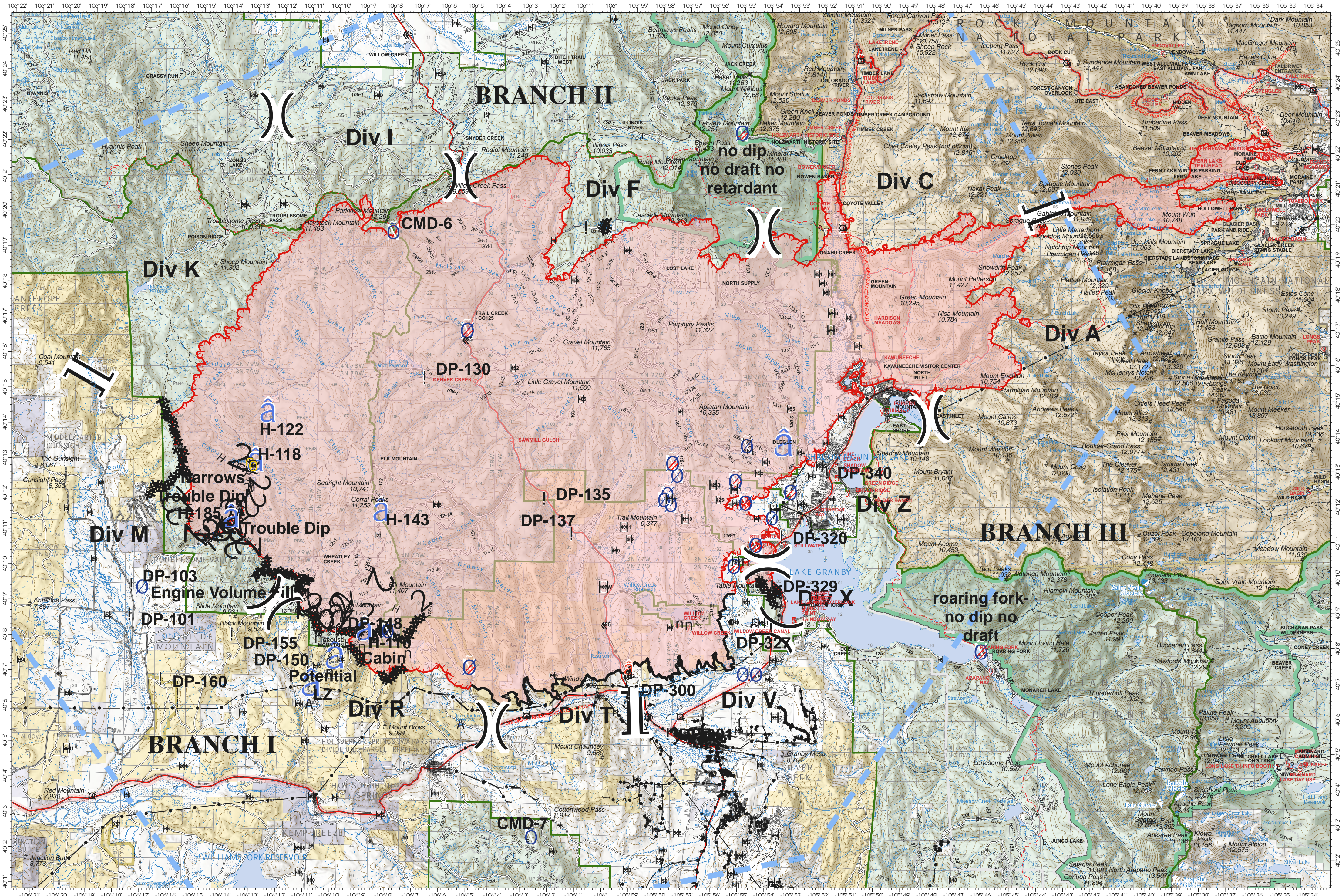


OPERATIONS - EAST TROUBLESOME CREEK - GRAND ZONE

OCTOBER 26, 2020



EAST TROUBLESOME CREEK - GRAND ZONE
WY-MRF-000408

10/24/20 1702 hrs
 192,560 Acres

- | | | | | | |
|---------------------------|---------------|---------------------------|--------------------------|----------------------------|--------------------------------|
| A Dip Site | ⊙ Helispot | ⊙ Water Source | Branch Break | ⊗ Completed Dozer Line | ⬢ Temporary Flight Restriction |
| ! Drop Point | ⊙ Hot Spot | ⊙ Restricted Water Source | — Uncontrolled Fire Edge | ⊗ Completed Hand Line | World Hillshade |
| ⊙ Helibase | ⊙ Repeater | n Value at Risk | — Contained Line | R 2 Road as Completed Line | |
| ⊙ Unimproved Landing Area | ⊙ Safety Zone |) Division Break | | D Proposed Dozer Line | |

0 2 4 Miles
 Map Projection: UTMZone 13, NAD83

