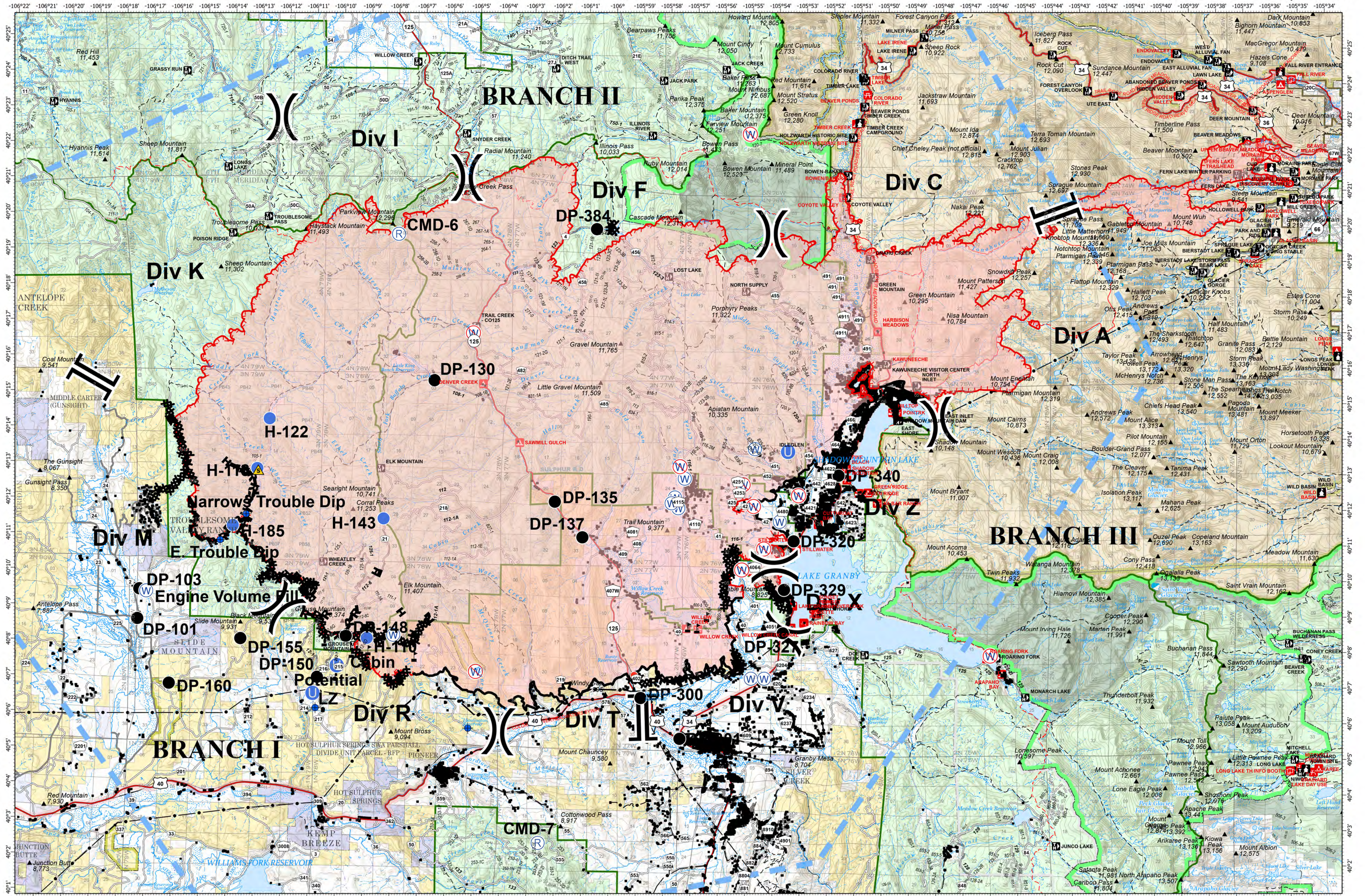


OPERATIONS - EAST TROUBLESOME CREEK - GRAND ZONE

OCTOBER 27, 2020



EAST TROUBLESOME CREEK - GRAND ZONE
WY-MRF-000408

10/26/20 1900 hrs
 192,574 Acres

- ◆ Dip Site
- Drop Point
- ⊙ Helibase
- Unimproved Landing Area
- Hot Spot
- ⊙ Repeater
- ▲ Safety Zone
- ⊙ Water Source
- ⊙ Restricted Water Source
- ⊙ Value at Risk
- ⊙ Division Break
- Branch Break
- Uncontrolled Fire Edge
- Contained Line
- Completed Dozer Line
- Completed Hand Line
- Road as Completed Line
- Proposed Dozer Line
- Temporary Flight Restriction

0 2 4 Miles



Map Projection: UTM Zone 13, NAD83

