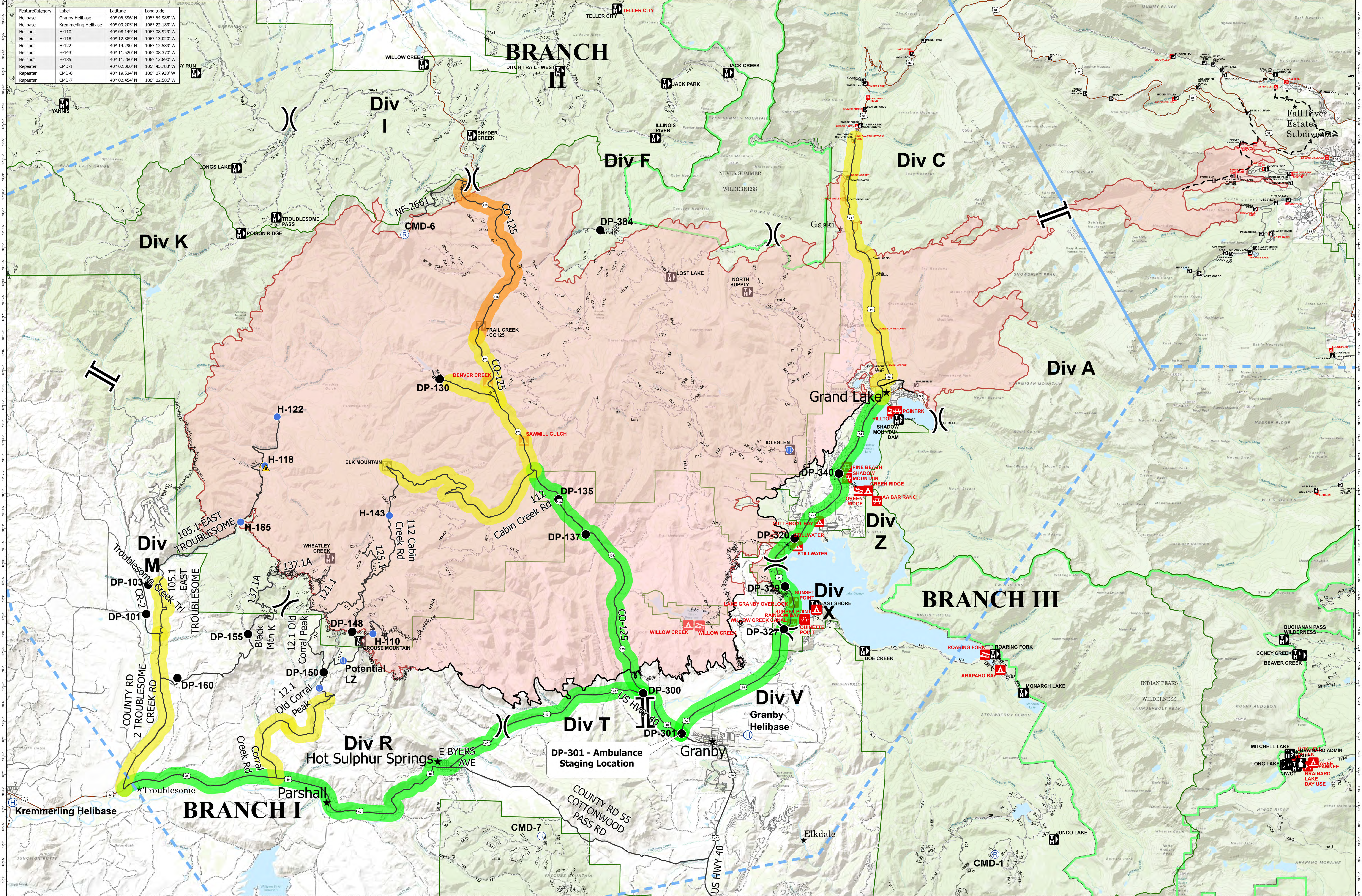


Ambulance Response Time - East Troublesome Creek - Grand Zone

October 27, 2020



EAST TROUBLESOME CREEK - GRAND ZONE
WY-MRF-000408

Fire Perimeter as of 10/26/20 1900 hrs
 192,574 Acres

Ambulance Response Time
■ <30 min
■ 30-45 min
■ 45-60 min
 ★ City

— Roads
 ● Drop Point
 Ⓜ Helibase
 Ⓜ Unimproved Landing Area
 ● Helispot

Ⓜ Repeater
 ⚠ Safety Zone
)) Division Break

|| Branch Break
 — Contained Line
 ⚡ Completed Dozer Line

— H Completed Hand Line
 — R Road as Completed Line
 × Proposed Dozer Line
 - - Planned Fire Line
 — Temporary Flight Restriction

▭ Fire Perimeter
 ▭ FS Boundary
 ▭ Wilderness

