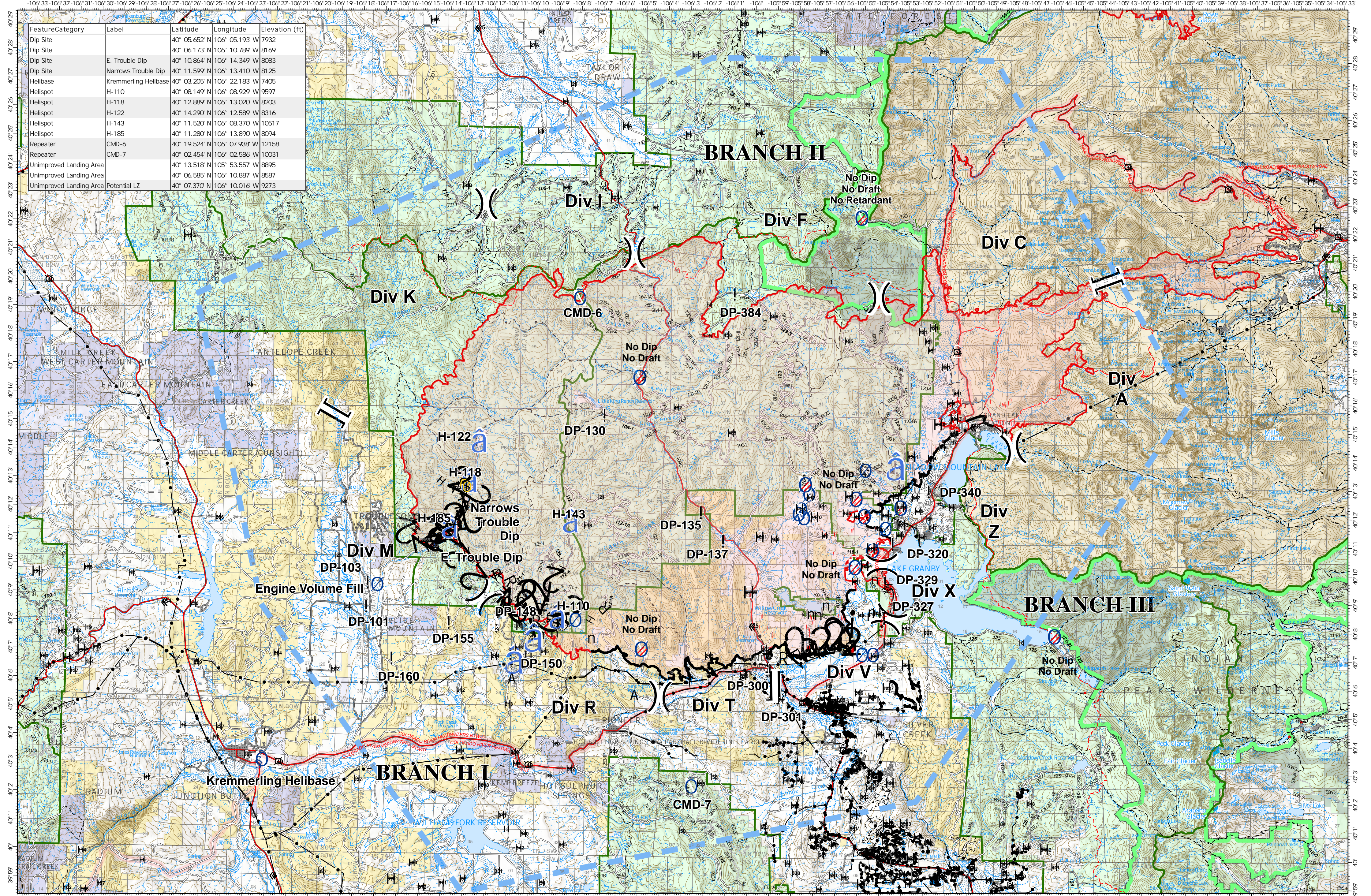


Air Operations - East Troublesome Creek - Grand Zone

October 27, 2020



FeatureCategory	Label	Latitude	Longitude	Elevation (ft)
Dip Site		40° 05.652' N	106° 05.193' W	7932
Dip Site		40° 06.173' N	106° 10.789' W	8169
Dip Site	E. Trouble Dip	40° 10.864' N	106° 14.349' W	8083
Dip Site	Narrows Trouble Dip	40° 11.599' N	106° 13.410' W	8125
Helibase	Kremmerling Helibase	40° 03.205' N	106° 22.183' W	7405
Helispot	H-110	40° 08.149' N	106° 08.929' W	9597
Helispot	H-118	40° 12.889' N	106° 13.020' W	8203
Helispot	H-122	40° 14.290' N	106° 12.589' W	8316
Helispot	H-143	40° 11.520' N	106° 08.370' W	10517
Helispot	H-185	40° 11.280' N	106° 13.890' W	8094
Repeater	CMD-6	40° 19.524' N	106° 07.938' W	12158
Repeater	CMD-7	40° 02.454' N	106° 02.586' W	10031
Unimproved Landing Area		40° 13.518' N	105° 53.557' W	8895
Unimproved Landing Area		40° 06.585' N	106° 10.887' W	8587
Unimproved Landing Area	Potential LZ	40° 07.370' N	106° 10.016' W	9273

EAST TROUBLESOME CREEK - GRAND ZONE
 Fire Perimeter as of 10/26/20 1900 hrs
 192,574 Acres

- ! IR Isolated Heat
- ⊕ Helibase
- ⊙ Repeater
- ⊗ Restricted Water Source
- ⌋ Branch Break
- R 2 Road as Completed Line
- ⊡ Wildfire Daily Fire Perimeter
- A Dip Site
- ⊕ Unimproved Landing Area
- ⊙ Safety Zone
- ⊗ Value at Risk
- D Proposed Dozer Line
- ⊡ IR Heat Perimeter
- ! Drop Point
- ⊕ Helispot
- ⊙ Water Source
-) (Division Break
- ⌋ Contained Line
- ⌋ Completed Hand Line
- ⌋ Temporary Flight Restriction
- World Hillshade

