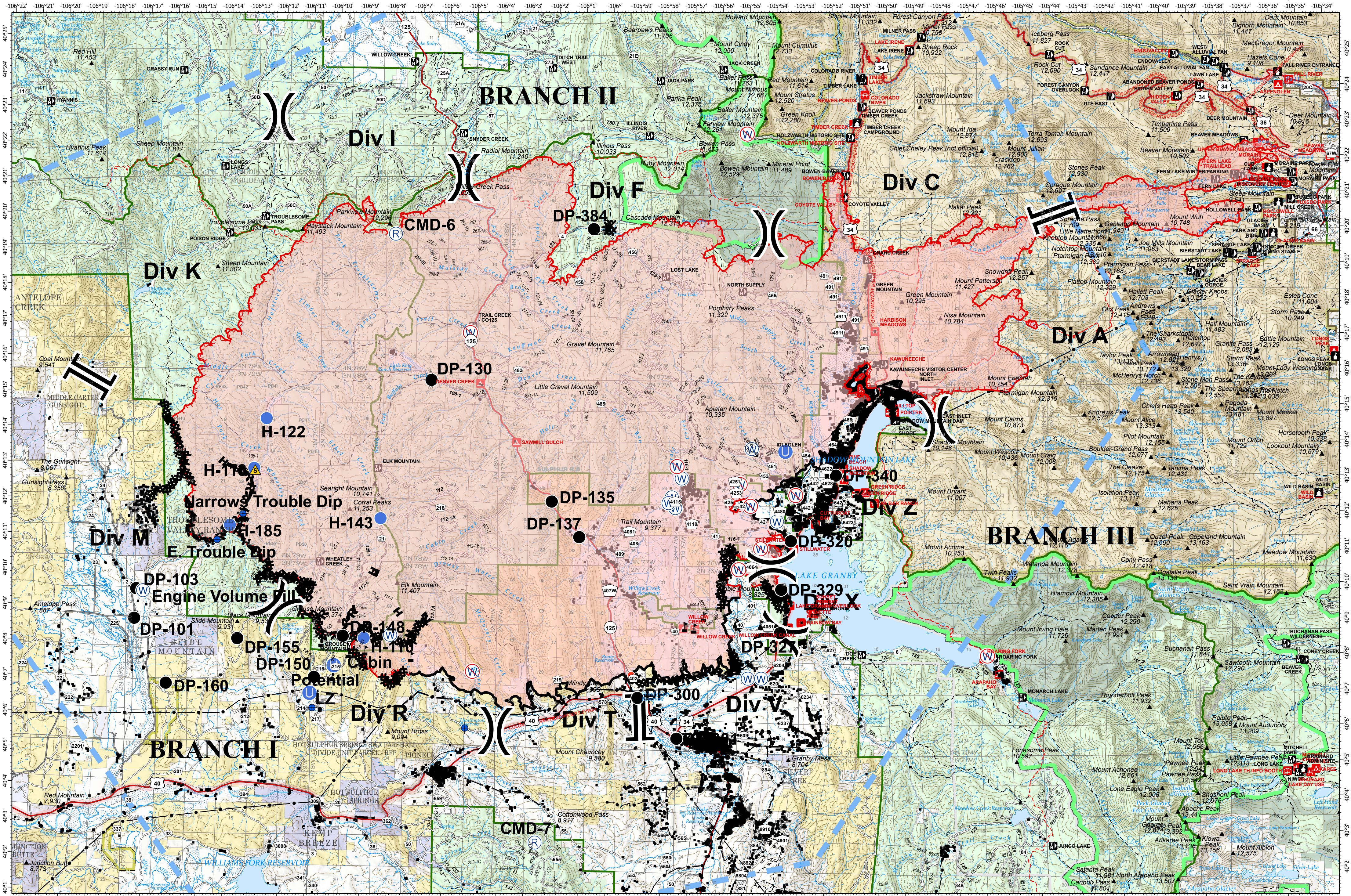


# OPERATIONS - EAST TROUBLESOME CREEK - GRAND ZONE

OCTOBER 27, 2020



**EAST TROUBLESOME CREEK - GRAND ZONE**  
**WY-MRF-000408**

10/26/20 1900 hrs  
 192,574 Acres

- ◆ Dip Site
- Drop Point
- ⊙ Helibase
- Unimproved Landing Area
- Helispot
- Hot Spot
- ⊙ Repeater
- Safety Zone
- ⊙ Water Source
- ⊙ Restricted Water Source
- ⊙ Value at Risk
- ⊙ Division Break
- || Branch Break
- Uncontrolled Fire Edge
- Contained Line
- ⊗ Completed Dozer Line
- ⊗ Completed Hand Line
- ⊗ Road as Completed Line
- ⊗ Proposed Dozer Line
- ▬ Temporary Flight Restriction

0 2 4 Miles



Map Projection: UTM Zone 13, NAD83

