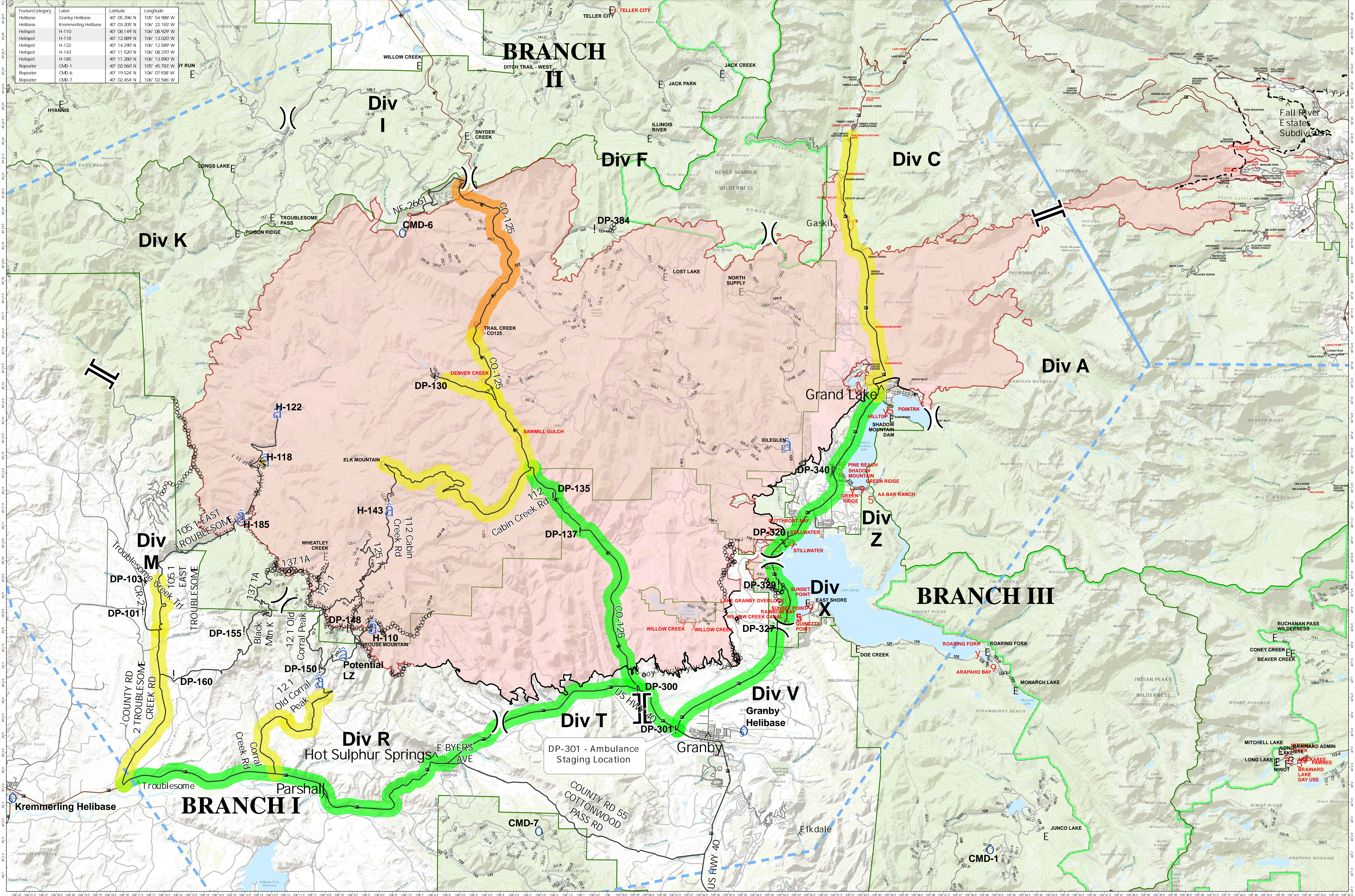


Ambulance Response Time - East Troublesome Creek - Grand Zone

October 27, 2020



FeatureCategory	Label	Latitude	Longitude
Helibase	Granby Helibase	40° 05.396' N	105° 54.988' W
Helibase	Kremmerling Helibase	40° 03.205' N	106° 22.183' W
Helispot	H-110	40° 08.149' N	106° 08.929' W
Helispot	H-118	40° 12.889' N	106° 13.050' W
Helispot	H-122	40° 14.290' N	106° 12.589' W
Helispot	H-143	40° 11.520' N	106° 08.370' W
Helispot	H-185	40° 11.280' N	106° 13.890' W
Repeater	CMD-1	40° 02.062' N	105° 45.783' W
Repeater	CMD-6	40° 19.524' N	106° 07.938' W
Repeater	CMD-7	40° 02.454' N	106° 02.586' W

EAST TROUBLESOME CREEK - GRAND ZONE
WY-MRF-000408

Fire Perimeter as of 10/26/20 1900 hrs
 192,574 Acres

Ambulance Response Time
■ < 30 min
■ 30-45 min
■ 45-60 min
 ^ City

— Roads
 ! Drop Point
 Helibase
 Unimproved Landing Area
 Helispot

Repeater
 Safety Zone
 Division Break

Branch Break
 — Contained Line
 Completed Dozer Line

1 21 Completed Hand Line
 y y Road as Completed Line
 D Proposed Dozer Line
 - - Planned Fire Line
 - - Temporary Flight Restriction

Fire Perimeter
 FS Boundary
 Wilderness



0 1.5 3 Miles