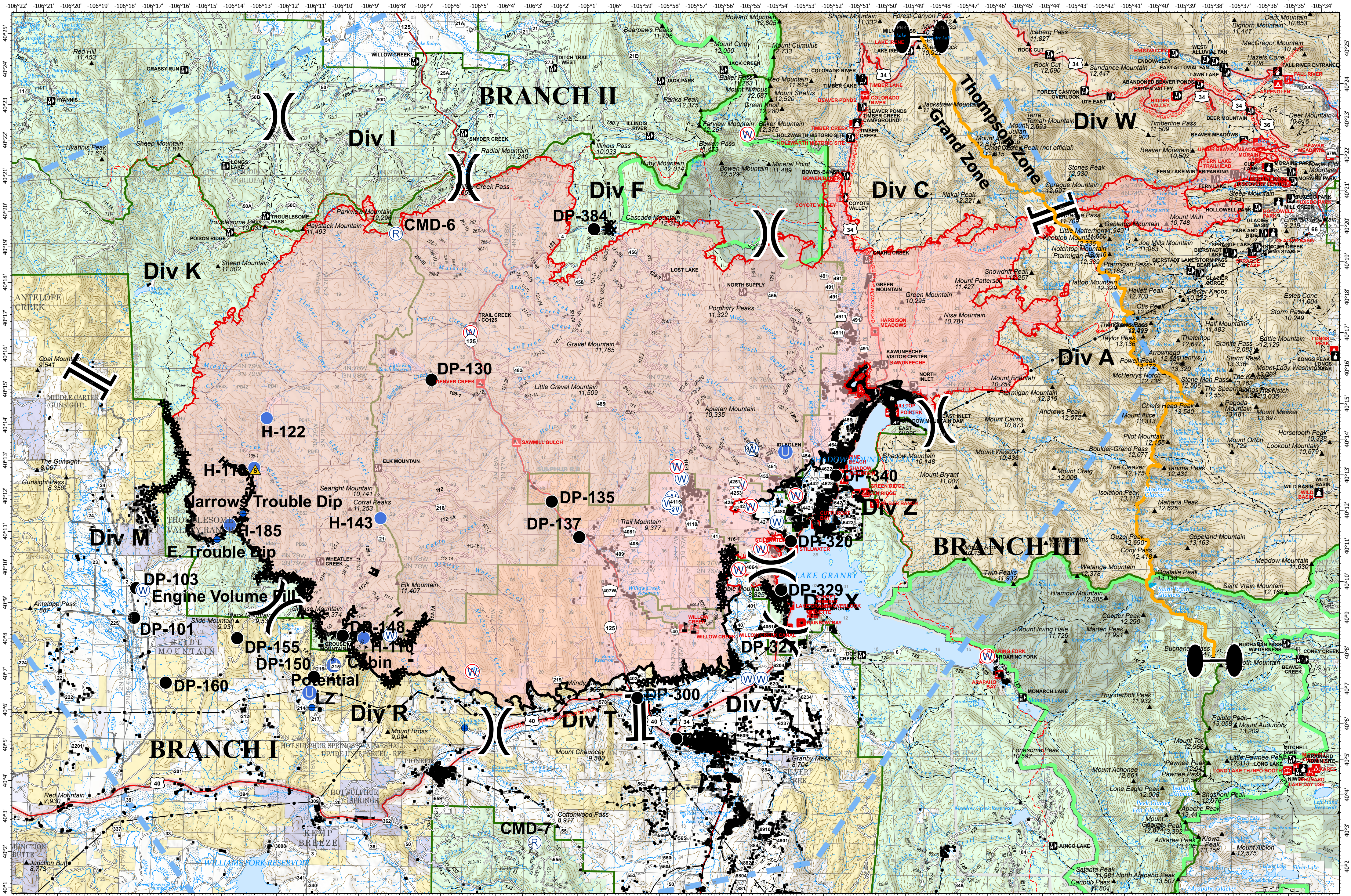


OPERATIONS - EAST TROUBLESOME CREEK - GRAND ZONE

OCTOBER 28, 2020



EAST TROUBLESOME CREEK - GRAND ZONE
WY-MRF-000408

10/27/20 1354 hrs
 193,774 Total Acres
 188,910 Grand Zone
 4,864 Thompson Zone

- Dip Site
- Drop Point
- Helibase
- Unimproved Landing Area
- Helispot
- Repeater
- ▲ Safety Zone
- Water Source
- Restricted Water Source
- Value at Risk
- Zone Break
- ⌋ Division Break
- ⌋ Branch Break
- Uncontrolled Fire Edge
- Contained Line
- ⌘ Completed Dozer Line
- ⌘ Completed Hand Line
- ⌘ Road as Completed Line
- ⌘ Proposed Dozer Line
- ⌘ Temporary Flight Restriction

- Surface Management Agency**
- Bureau of Land Management
 - Bureau of Reclamation
 - Indian Reservation
 - Military Reservation
 - National Grasslands
 - National Park Service
 - Other Federal
 - Private
 - State
 - State, County, City; Areas
 - Bankhead-Jones Land Use Lands
 - US Fish and Wildlife Service
 - US Forest Service
 - Zone Break

Map Projection: UTM Zone 13, NAD83

Scale: 0 2 4 Miles