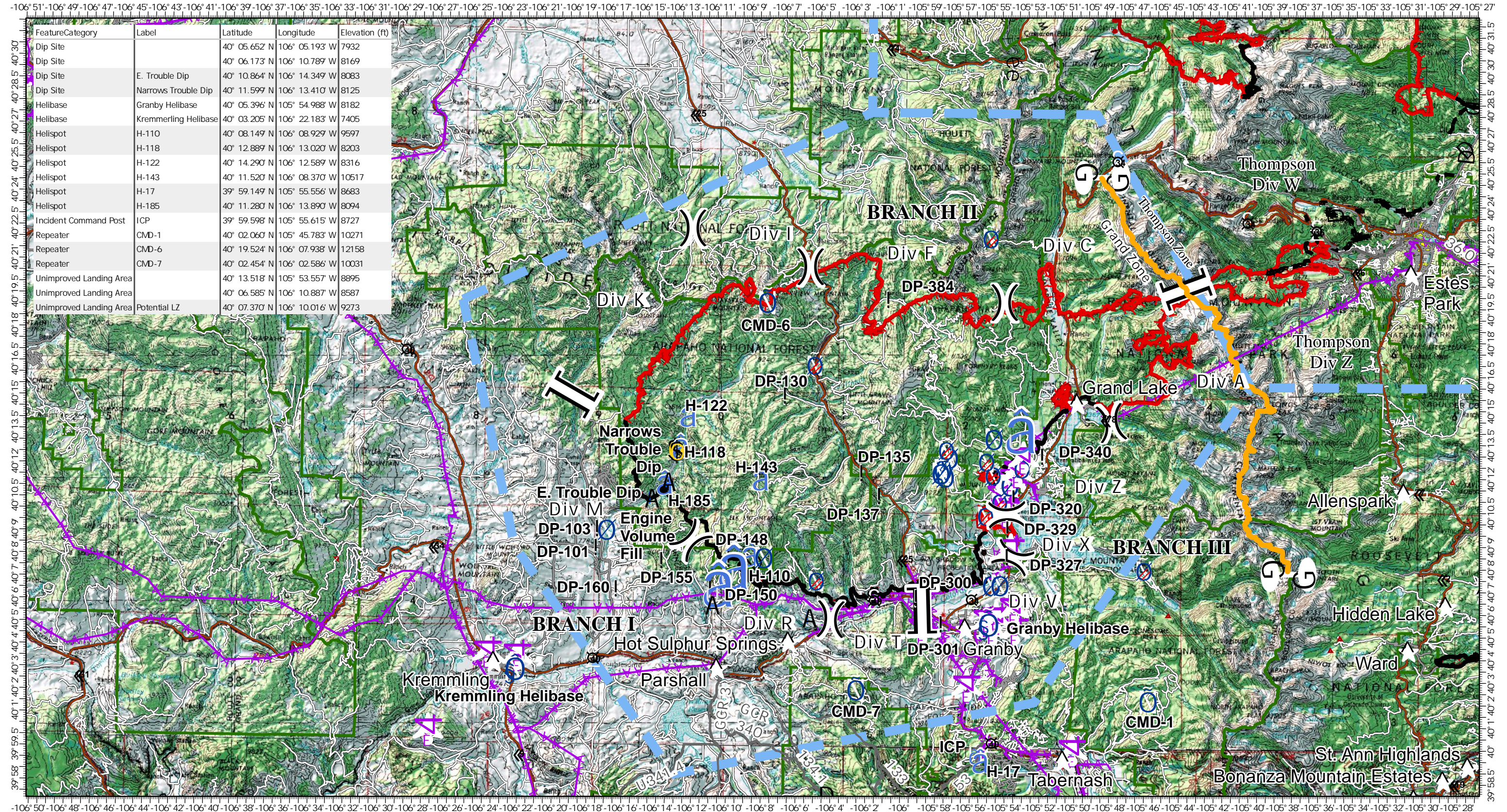


# Air Operations - East Troublesome Creek - Grand Zone

10/29/2020



FeatureCategory	Label	Latitude	Longitude	Elevation (ft)
Dip Site		40° 05.652' N	106° 05.193' W	7932
Dip Site		40° 06.173' N	106° 10.789' W	8169
Dip Site	E. Trouble Dip	40° 10.864' N	106° 14.349' W	8083
Dip Site	Narrows Trouble Dip	40° 11.599' N	106° 13.410' W	8125
Helibase	Granby Helibase	40° 05.396' N	105° 54.988' W	8182
Helibase	Kremmerling Helibase	40° 03.205' N	106° 22.183' W	7405
Helispot	H-110	40° 08.149' N	106° 08.929' W	9597
Helispot	H-118	40° 12.889' N	106° 13.020' W	8203
Helispot	H-122	40° 14.290' N	106° 12.589' W	8316
Helispot	H-143	40° 11.520' N	106° 08.370' W	10517
Helispot	H-17	39° 59.149' N	105° 55.556' W	8683
Helispot	H-185	40° 11.280' N	106° 13.890' W	8094
Incident Command Post	ICP	39° 59.598' N	105° 55.615' W	8727
Repeater	CMD-1	40° 02.060' N	105° 45.783' W	10271
Repeater	CMD-6	40° 19.524' N	106° 07.938' W	12158
Repeater	CMD-7	40° 02.454' N	106° 02.586' W	10031
Unimproved Landing Area		40° 13.518' N	105° 53.557' W	8895
Unimproved Landing Area	Potential LZ	40° 06.585' N	106° 10.887' W	8587
Unimproved Landing Area	Potential LZ	40° 07.370' N	106° 10.016' W	9273

**EAST TROUBLESOME CREEK - GRAND ZONE**  
 10/27/2020 1227 hrs  
 193,774 Total Acres  
 188,910 Grand Zone  
 4,864 Thompson Zone

Aerial Hazard	Drop Point	Incident Command Post	Restricted Water Source	Branch Break	Proposed Dozer Line	Fire Perimeter
Closure	Helibase	Repeater	Zone Break	Uncontrolled Fire Edge	Fire Break Planned or Incomplete	FS Proclaimed Forest
Dip Site	Unimproved Landing Area	Safety Zone	Division Break	Contained Line	Planned Fire Line	ZoneBreak
	Helispot	Water Source		Temporary Flight Restriction		

