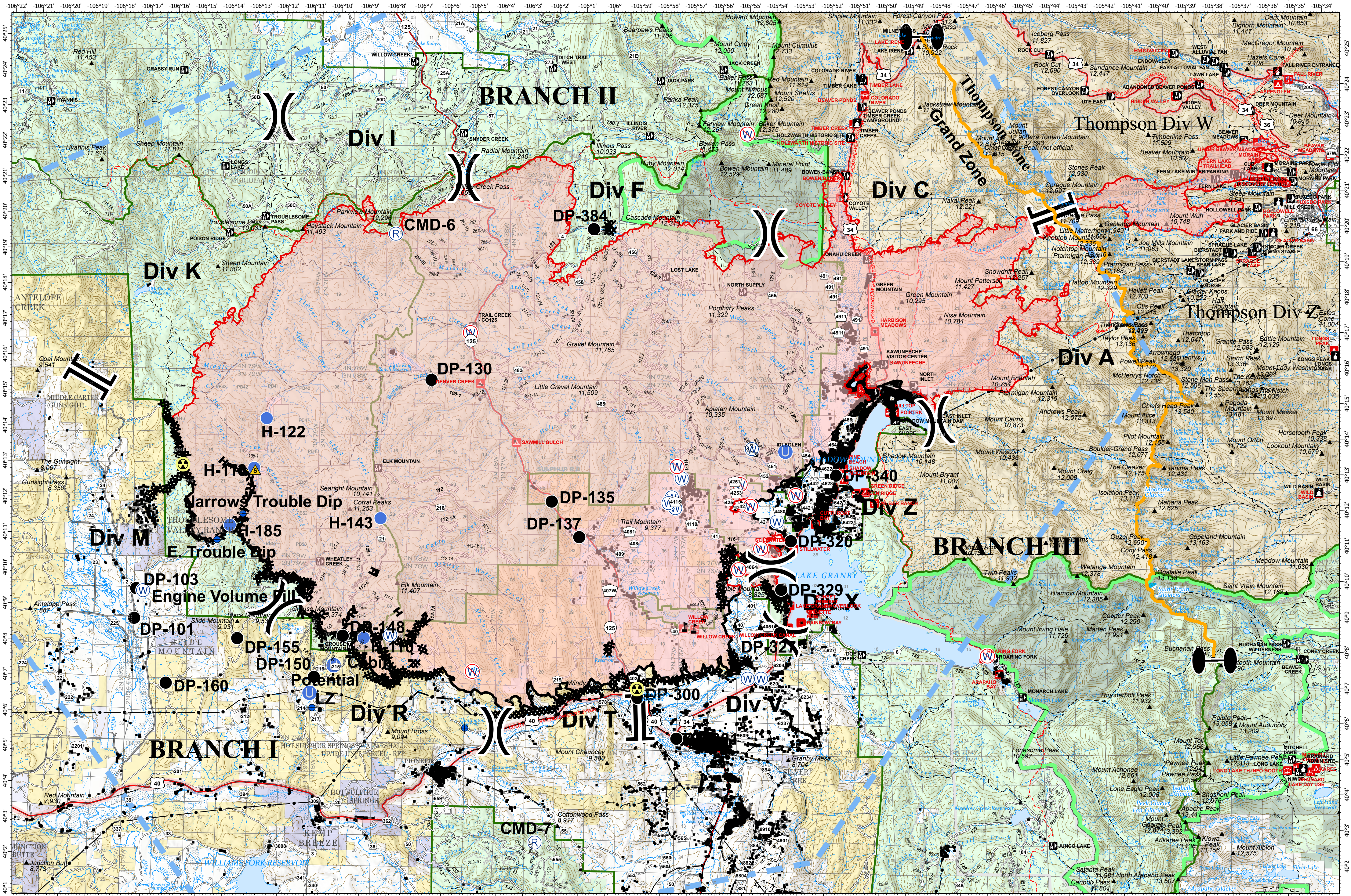


OPERATIONS - EAST TROUBLESOME CREEK - GRAND ZONE

OCTOBER 29, 2020



EAST TROUBLESOME CREEK - GRAND ZONE
WY-MRF-000408

10/27/20 1354 hrs
 193,774 Total Acres
 188,910 Grand Zone
 4,864 Thompson Zone

- Dip Site
- Drop Point
- ⚠ Hazard
- ⊕ Helibase
- Unimproved Landing Area
- Helispot
- ⊕ Repeater
- ⚠ Safety Zone
- ⊕ Water Source
- ⊕ Restricted Water Source
- ⚠ Value at Risk
- ⊕ Zone Break
- ⊕ Division Break
- ⊕ Branch Break
- ⊕ Uncontrolled Fire Edge
- ⊕ Contained Line

- ⊕ Completed Dozer Line
- ⊕ Completed Hand Line
- ⊕ Road as Completed Line
- ⊕ Proposed Dozer Line
- ⊕ Temporary Flight Restriction

- Surface Management Agency**
- ⊕ Bureau of Land Management
 - ⊕ Bureau of Reclamation
 - ⊕ Indian Reservation
 - ⊕ Military Reservation

- ⊕ National Grasslands
- ⊕ National Park Service
- ⊕ Other Federal
- ⊕ Private
- ⊕ State
- ⊕ State, County, City, Areas

- ⊕ Bankhead-Jones Land Use Lands
- ⊕ US Fish and Wildlife Service
- ⊕ US Forest Service

Map Projection: UTM Zone 13, NAD83

Scale: 0 to 4 Miles

