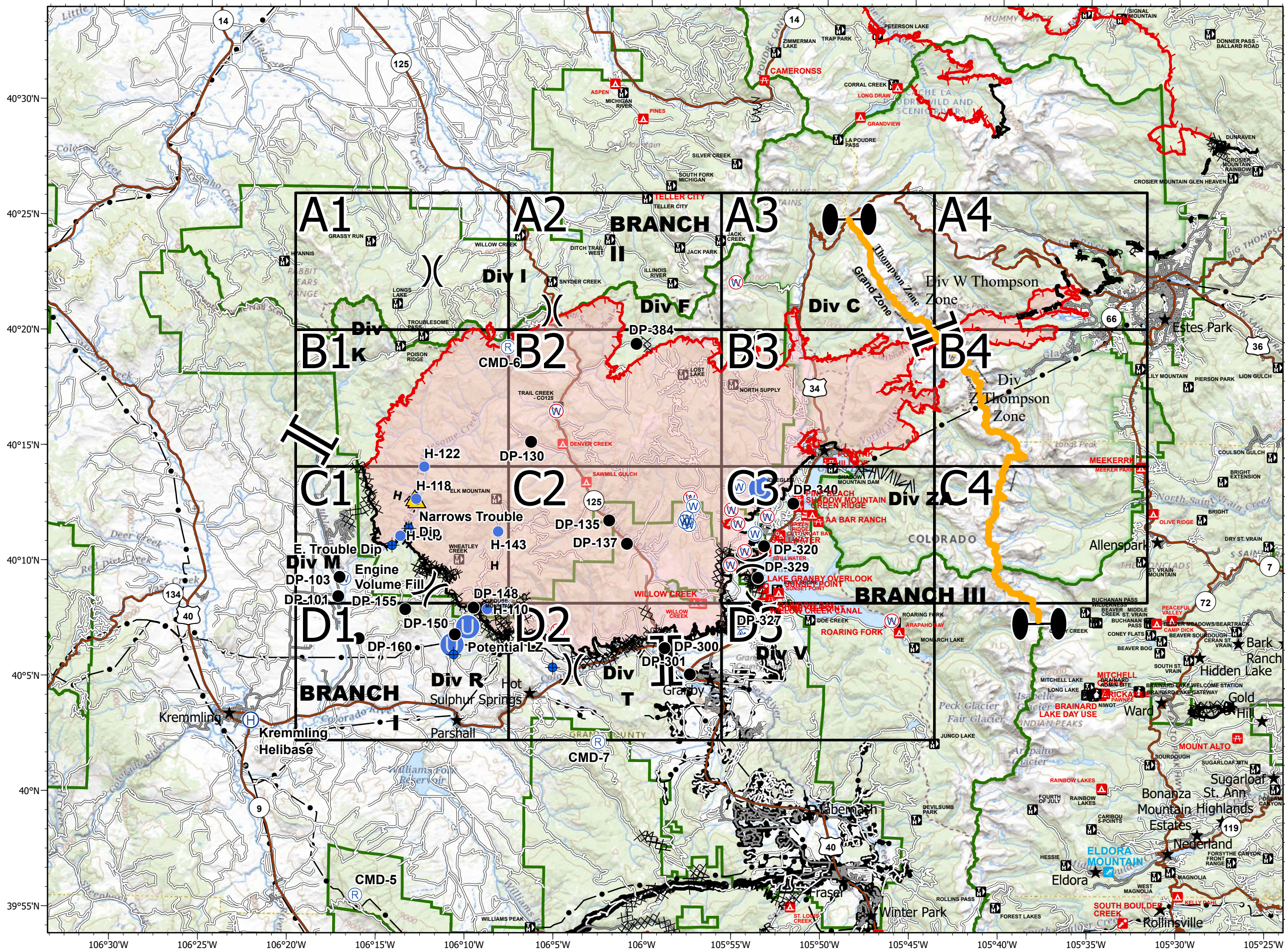
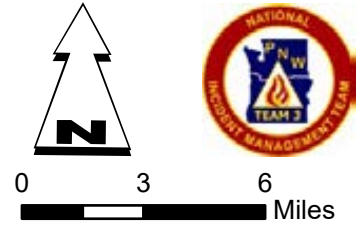


EAST TROUBLESOME CREEK - GRAND ZONE WY-MRF-000408

Fire Perimeter as of 10/27/20 1354 hrs
193,774 Total Acres
188,910 Grand Zone
4,864 Thompson Zone



- ◆ Dip Site
 - Drop Point
 - ⊕ Helibase
 - Unimproved Landing Area
 - Helispot
 - Ⓡ Repeater
 - ▲ Safety Zone
 - Ⓜ Water Source
 - Ⓜ Restricted Water Source
 - ⊖ Zone Break
 - ⊖ Division Break
 - ⊖ Branch Break
 - Uncontrolled Fire Edge
 - Contained Line
 - ⊗ Completed Dozer Line
 - H Completed Hand Line
 - R Road as Completed Line
 - ⊖ Line Break Completed
 - ⊖ Fire Break Planned or Incomplete
 - Planned Fire Line
 - Fire Perimeter
- SITE_TYPE**
- ▲ INFO SITE/FEE STATION
 - ▲ CAMPGROUND
 - ▲ GROUP CAMPGROUND
 - ▲ TRAILHEAD
 - ▲ PICNIC SITE
 - ▲ GROUP PICNIC SITE
 - ▲ BOATING SITE
 - ▲ INTERPRETIVE SITE; INTERPRETIVE SITE (ADMIN)
 - ▲ SKI AREA ALPINE
- Forest Powerline Data**
- PubServCo_CLC411113
 - MtnPrksElectricInc
- Utilities**
- Power Lines
 - Gas Line
 - Zone Break

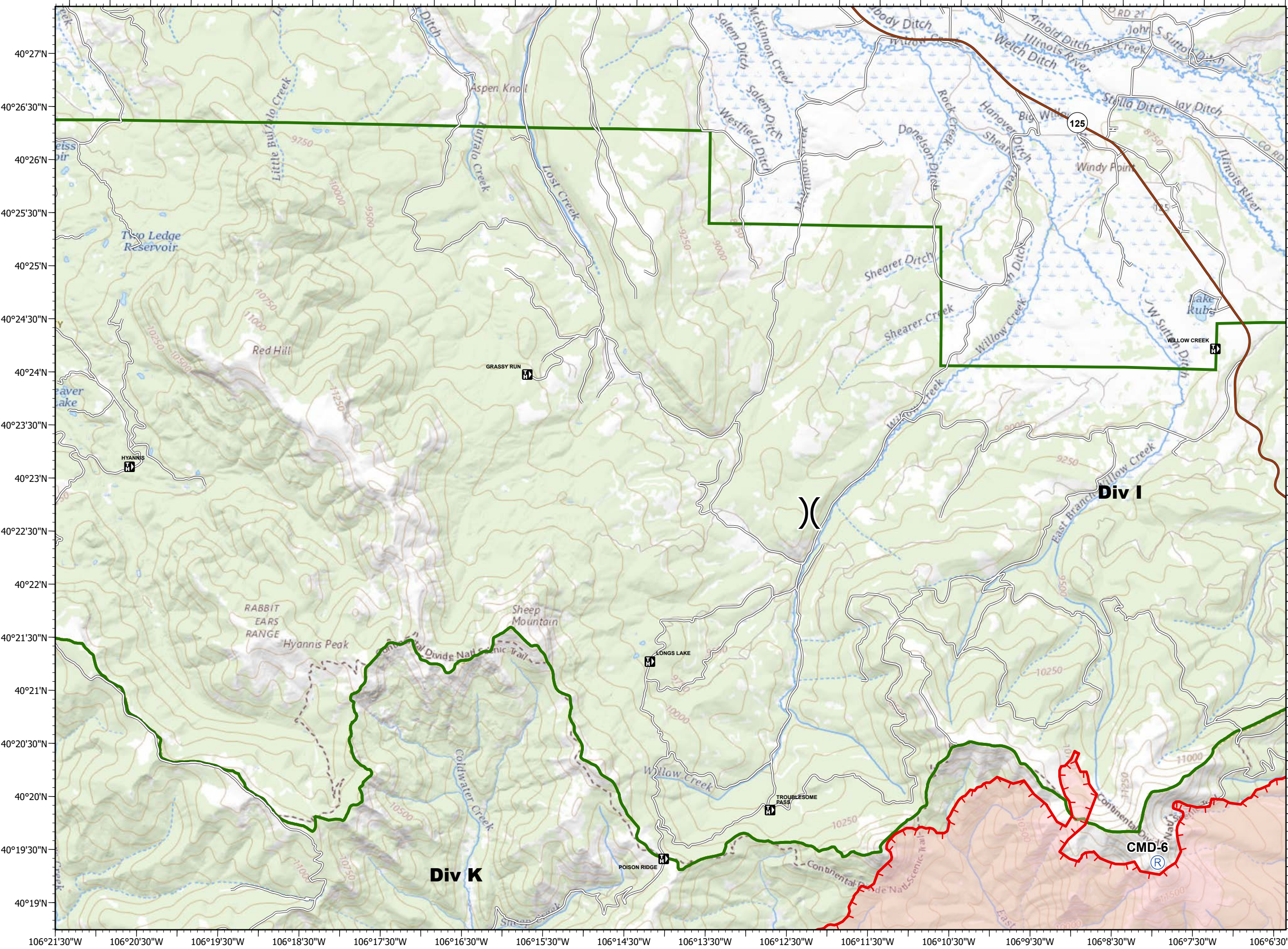
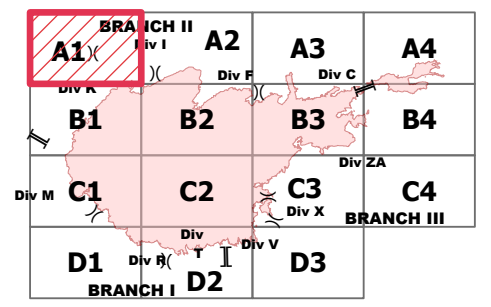
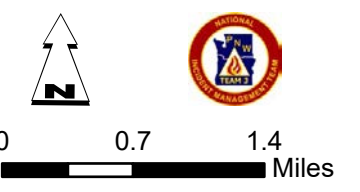


- Repeater
- Division Break
- Uncontrolled Fire Edge
- Fire Perimeter

- Forest Powerline Data**
- PubServCo_CLC411113
 - MtnPrksElectricInc

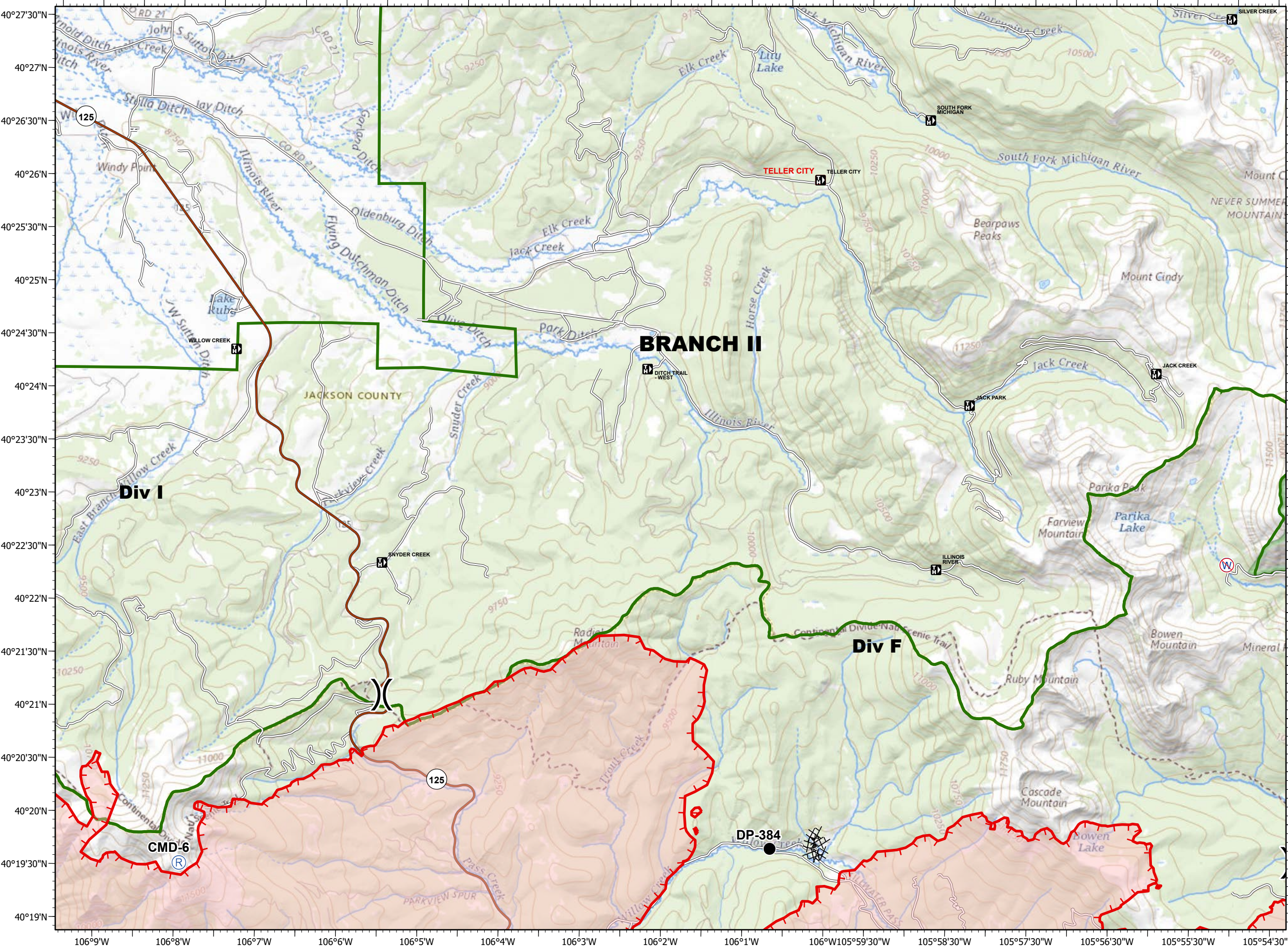
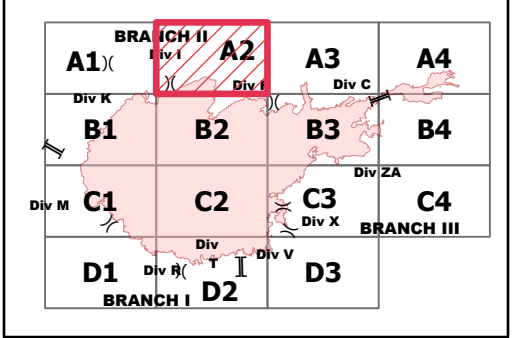
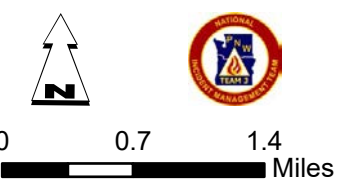
- Utilities**
- Power Lines
 - Gas Line
 - Res. Structures
 - Structures Centroids
 - Structure Footprints
 - Zone Break

Fire Perimeter as of 10/27/20 1354 hrs
 193,774 Total Acres
 188,910 Grand Zone
 4,864 Thompson Zone





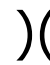





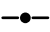





- Drop Point
 - Ⓡ Repeater
 - Ⓡ Restricted Water Source
 -) (Division Break
 - Uncontrolled Fire Edge
 - XXXX Completed Dozer Line
 - Fire Perimeter
- Forest Powerline Data**
- PubServCo_CLC411113
 - MtnPrksElectricInc
- Utilities**
- Power Lines
 - ⊕ Gas Line
 - Res. Structures
 - Structures Centroids
 - Structure Footprints
 - Zone Break

Fire Perimeter as of 10/27/20 1354 hrs
 193,774 Total Acres
 188,910 Grand Zone
 4,864 Thompson Zone

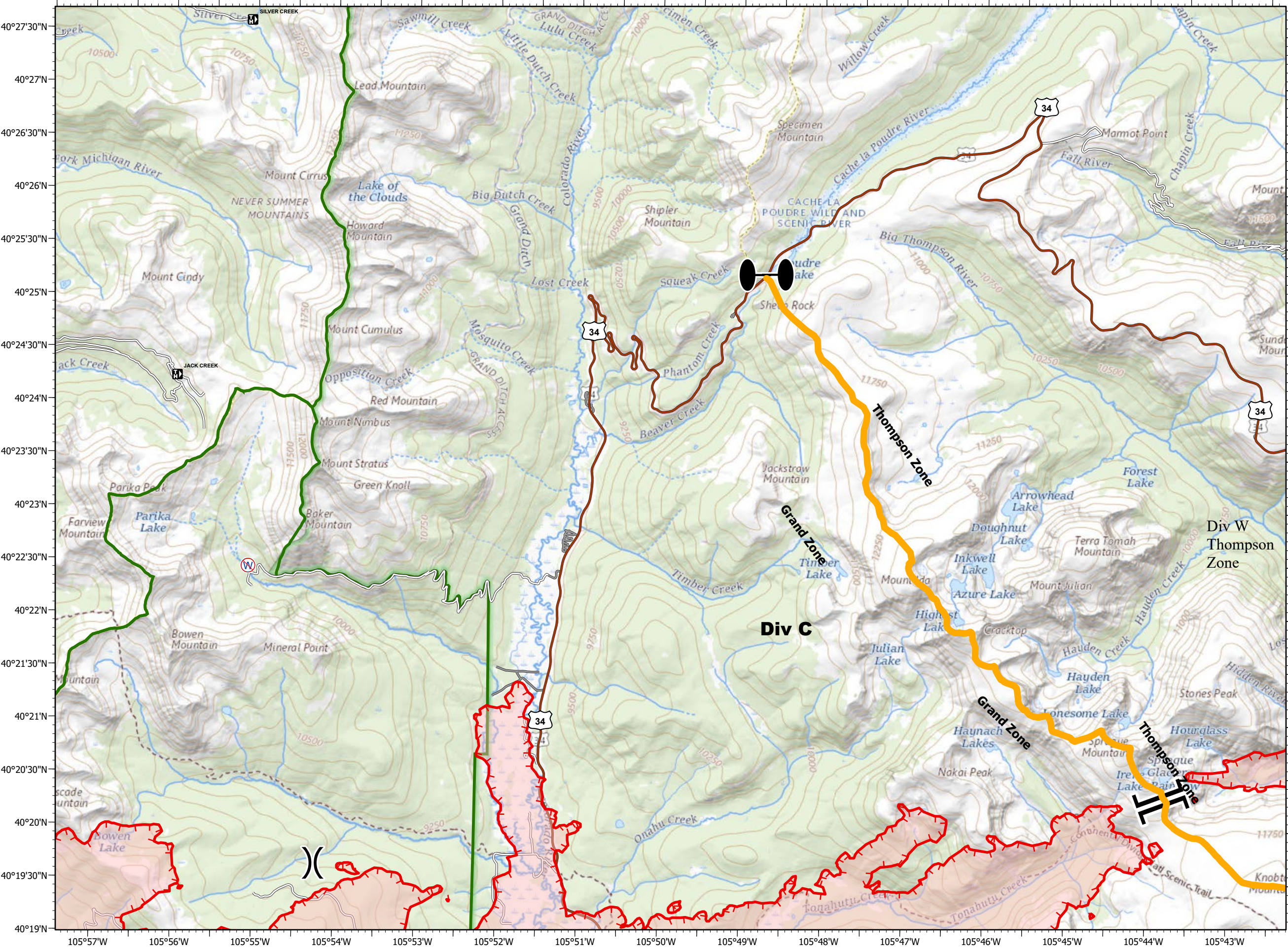
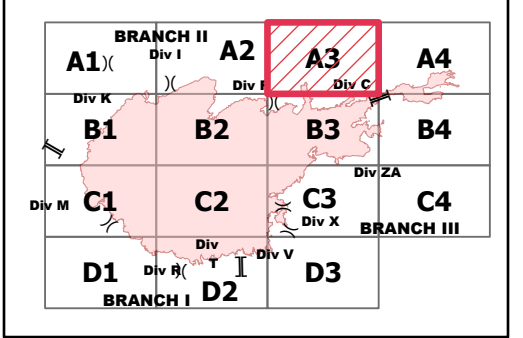
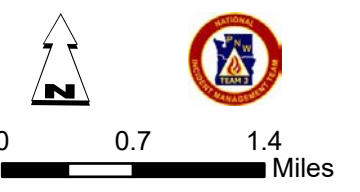


40°27'30"N
40°27'N
40°26'30"N
40°26'N
40°25'30"N
40°25'N
40°24'30"N
40°24'N
40°23'30"N
40°23'N
40°22'30"N
40°22'N
40°21'30"N
40°21'N
40°20'30"N
40°20'N
40°19'30"N
40°19'N

106°9'W 106°8'W 106°7'W 106°6'W 106°5'W 106°4'W 106°3'W 106°2'W 106°1'W 106°W 105°59'30"W 105°58'30"W 105°57'30"W 105°56'30"W 105°55'30"W 105°54'30"W

-  Restricted Water Source
-  Zone Break
-  Division Break
-  Branch Break
-  Uncontrolled Fire Edge
-  Fire Perimeter
- Forest Powerline Data**
-  PubServCo_CLC411113
-  MtnPrksElectricInc
- Utilities**
-  Power Lines
-  Gas Line
-  Res. Structures
-  Structures Centroids
-  Structure Footprints
-  Zone Break

Fire Perimeter as of 10/27/20 1354 hrs
 193,774 Total Acres
 188,910 Grand Zone
 4,864 Thompson Zone



EAST TROUBLESOME CREEK - GRAND ZONE

WY-MRF-000408

10/30/2020

- Branch Break
- Uncontrolled Fire Edge
- Road as Completed Line
- Planned Fire Line
- Fire Perimeter

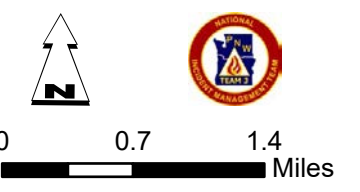
Forest Powerline Data

- PubServCo_CLC411113
- MtnPrksElectricInc

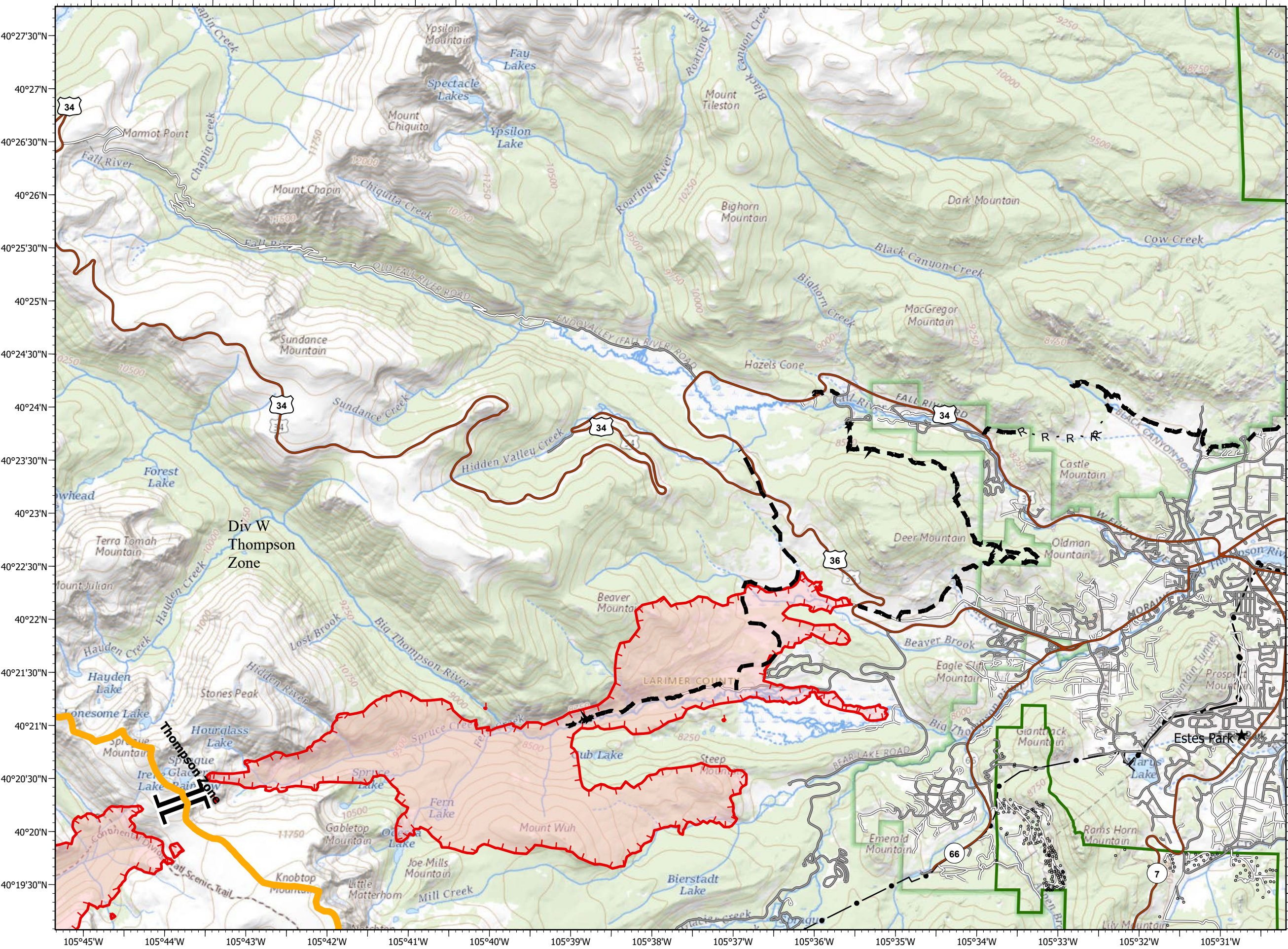
Utilities

- Power Lines
- Gas Line
- Res. Structures
- Structures Centroids
- Structure Footprints
- Zone Break

Fire Perimeter as of 10/27/20 1354 hrs
 193,774 Total Acres
 188,910 Grand Zone
 4,864 Thompson Zone



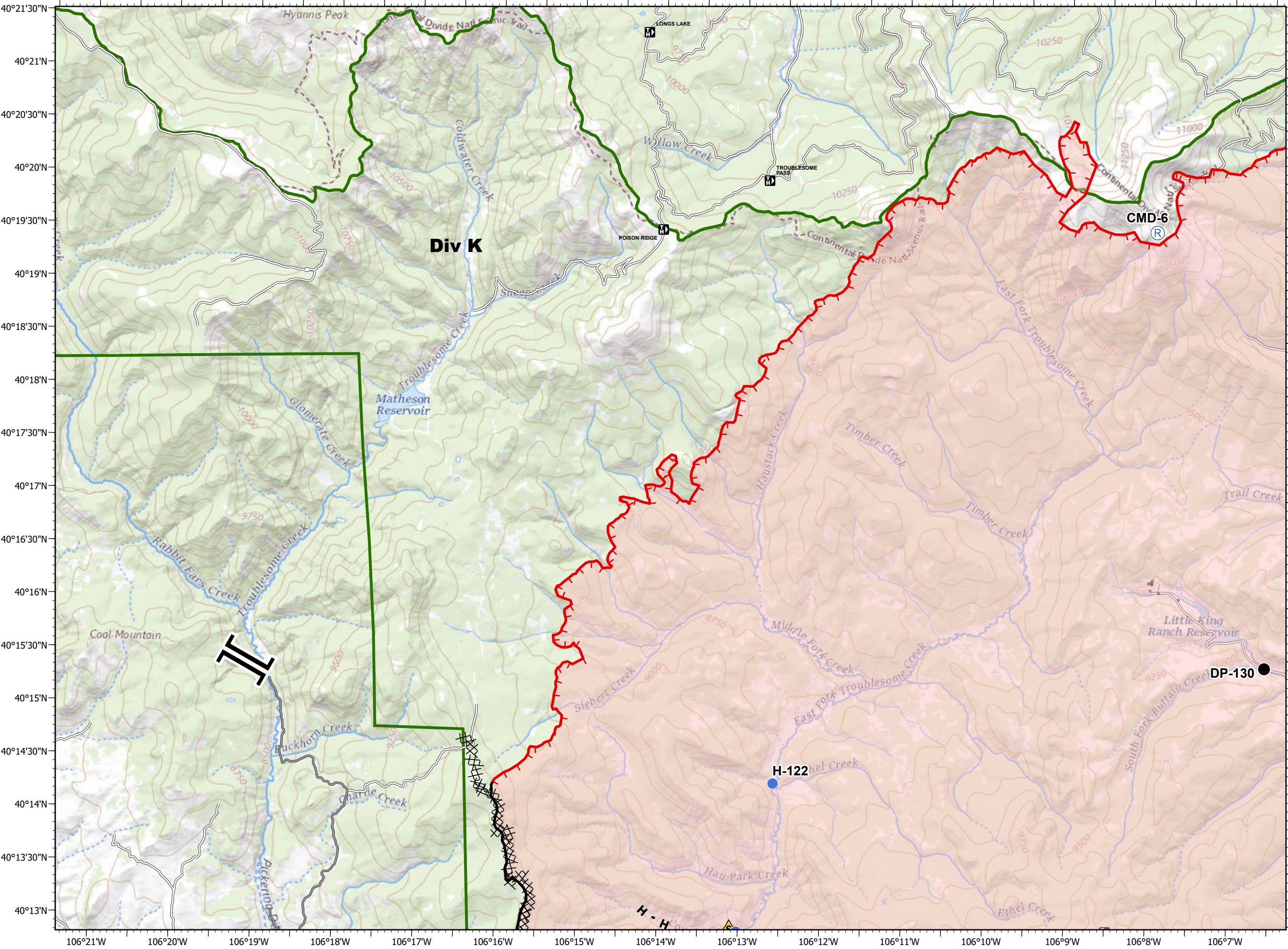
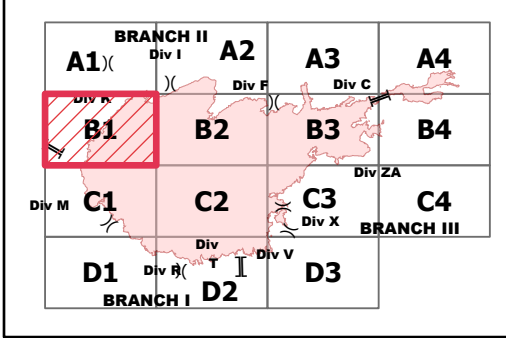
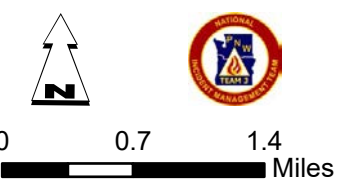
BRANCH II		BRANCH I	
A1	A2	A3	A4
Div K	Div F	Div C	
B1	B2	B3	B4
Div M	Div T	Div X	Div ZA
C1	C2	C3	C4
Div R	Div I	Div V	BRANCH III
D1	D2	D3	
BRANCH I			



IAP - Page Name: B1
EAST TROUBLESOME CREEK - GRAND ZONE
WY-MRF-000408
10/30/2020

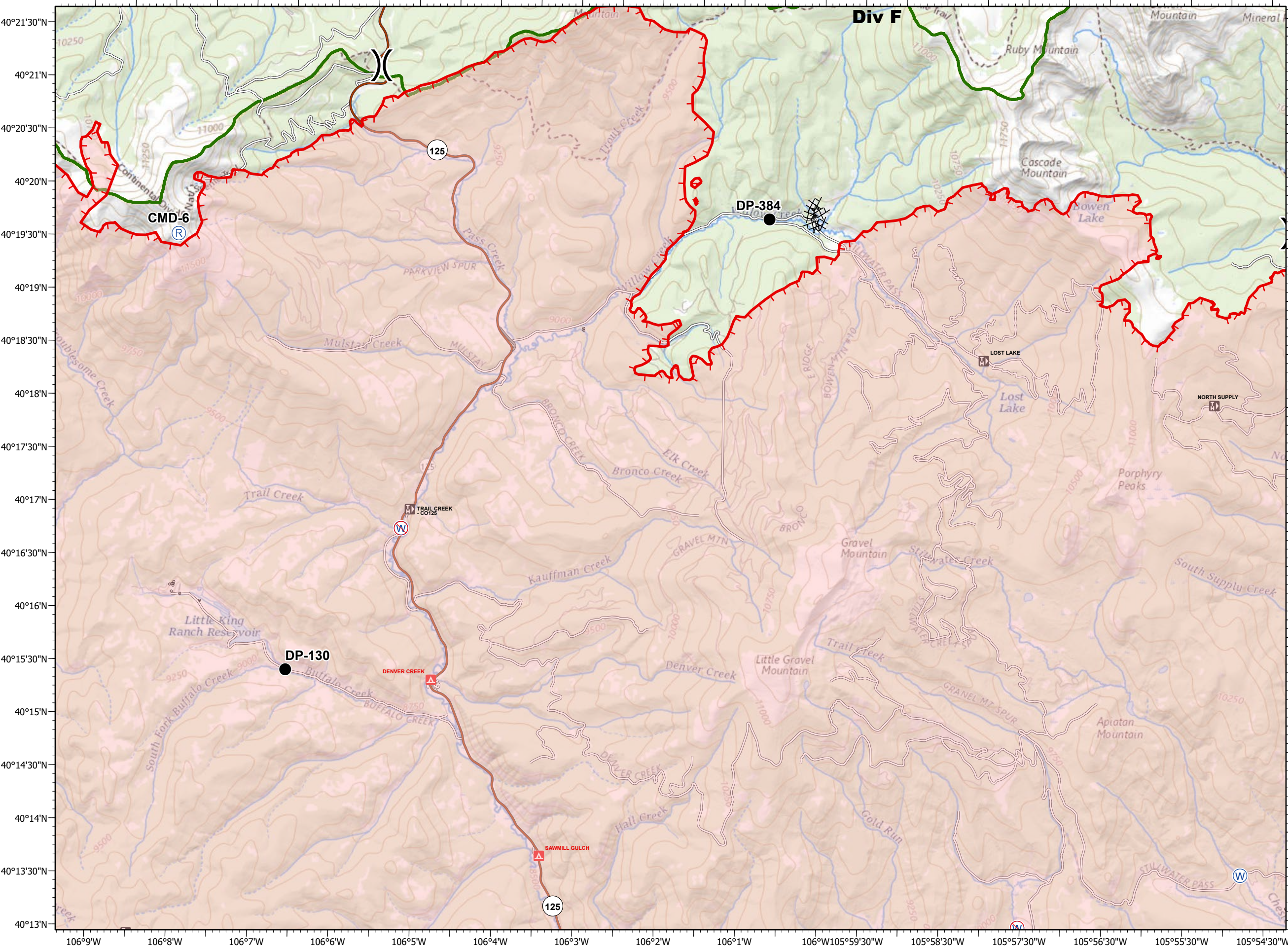
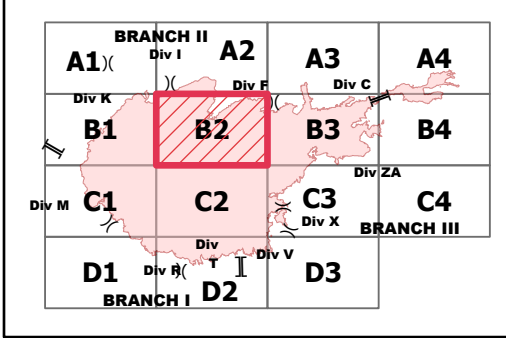
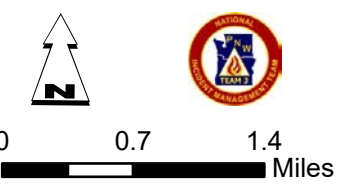
- Drop Point
 - Helispot
 - Ⓡ Repeater
 - ▲ Safety Zone
 -]] Branch Break
 - Uncontrolled Fire Edge
 - Contained Line
 - ⊗ Completed Dozer Line
 - H Completed Hand Line
 - R Road as Completed Line
 - Fire Perimeter
- Forest Powerline Data**
- PubServCo_CLC411113
 - MtnPrksElectricInc
- Utilities**
- Power Lines
 - ⊕ Gas Line
 - Res. Structures
 - Structures Centroids
 - Structure Footprints
 - Zone Break

Fire Perimeter as of 10/27/20 1354 hrs
 193,774 Total Acres
 188,910 Grand Zone
 4,864 Thompson Zone



- Drop Point
 - Ⓡ Repeater
 - Ⓜ Water Source
 - Ⓜ Restricted Water Source
 -) (Division Break
 - Uncontrolled Fire Edge
 - ⊗ Completed Dozer Line
 - Fire Perimeter
- Forest Powerline Data**
- PubServCo_CLC411113
 - MtnPrksElectricInc
- Utilities**
- Power Lines
 - ⊕ Gas Line
 - Res. Structures
 - Structures Centroids
 - Structure Footprints
 - Zone Break

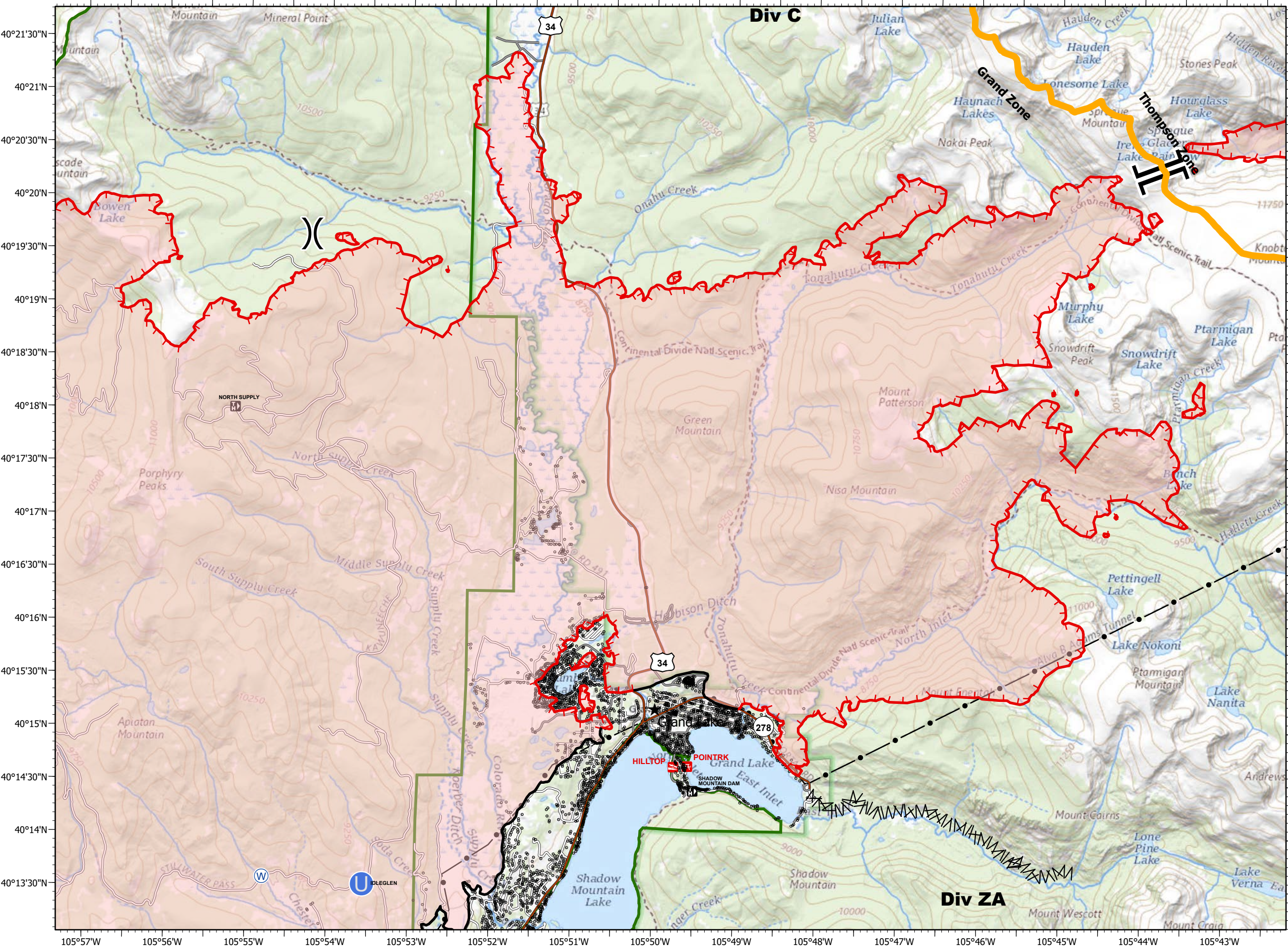
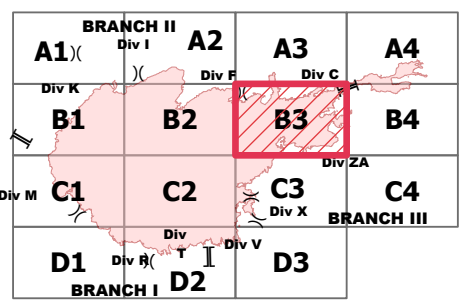
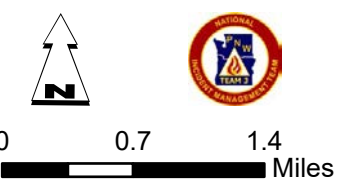
Fire Perimeter as of 10/27/20 1354 hrs
 193,774 Total Acres
 188,910 Grand Zone
 4,864 Thompson Zone



IAP - Page Name: B3
EAST TROUBLESOME CREEK - GRAND ZONE
WY-MRF-000408
10/30/2020

- Unimproved Landing Area
 - Water Source
 - Restricted Water Source
 - Division Break
 - Branch Break
 - Uncontrolled Fire Edge
 - Contained Line
 - Line Break Completed
 - Fire Perimeter
- Forest Powerline Data**
- PubServCo_CLC411113
 - MtnPrksElectricInc
- Utilities**
- Power Lines
 - Gas Line
 - Res. Structures
 - Structures Centroids
 - Structure Footprints
 - Zone Break

Fire Perimeter as of 10/27/20 1354 hrs
 193,774 Total Acres
 188,910 Grand Zone
 4,864 Thompson Zone



40°21'30"N
 40°21'N
 40°20'30"N
 40°20'N
 40°19'30"N
 40°19'N
 40°18'30"N
 40°18'N
 40°17'30"N
 40°17'N
 40°16'30"N
 40°16'N
 40°15'30"N
 40°15'N
 40°14'30"N
 40°14'N
 40°13'30"N

105°57'W 105°56'W 105°55'W 105°54'W 105°53'W 105°52'W 105°51'W 105°50'W 105°49'W 105°48'W 105°47'W 105°46'W 105°45'W 105°44'W 105°43'W

EAST TROUBLESOME CREEK - GRAND ZONE

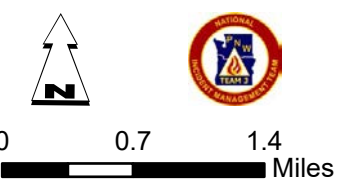
WY-MRF-000408
10/30/2020

- Branch Break
- Uncontrolled Fire Edge
- Line Break Completed
- Planned Fire Line
- Fire Perimeter

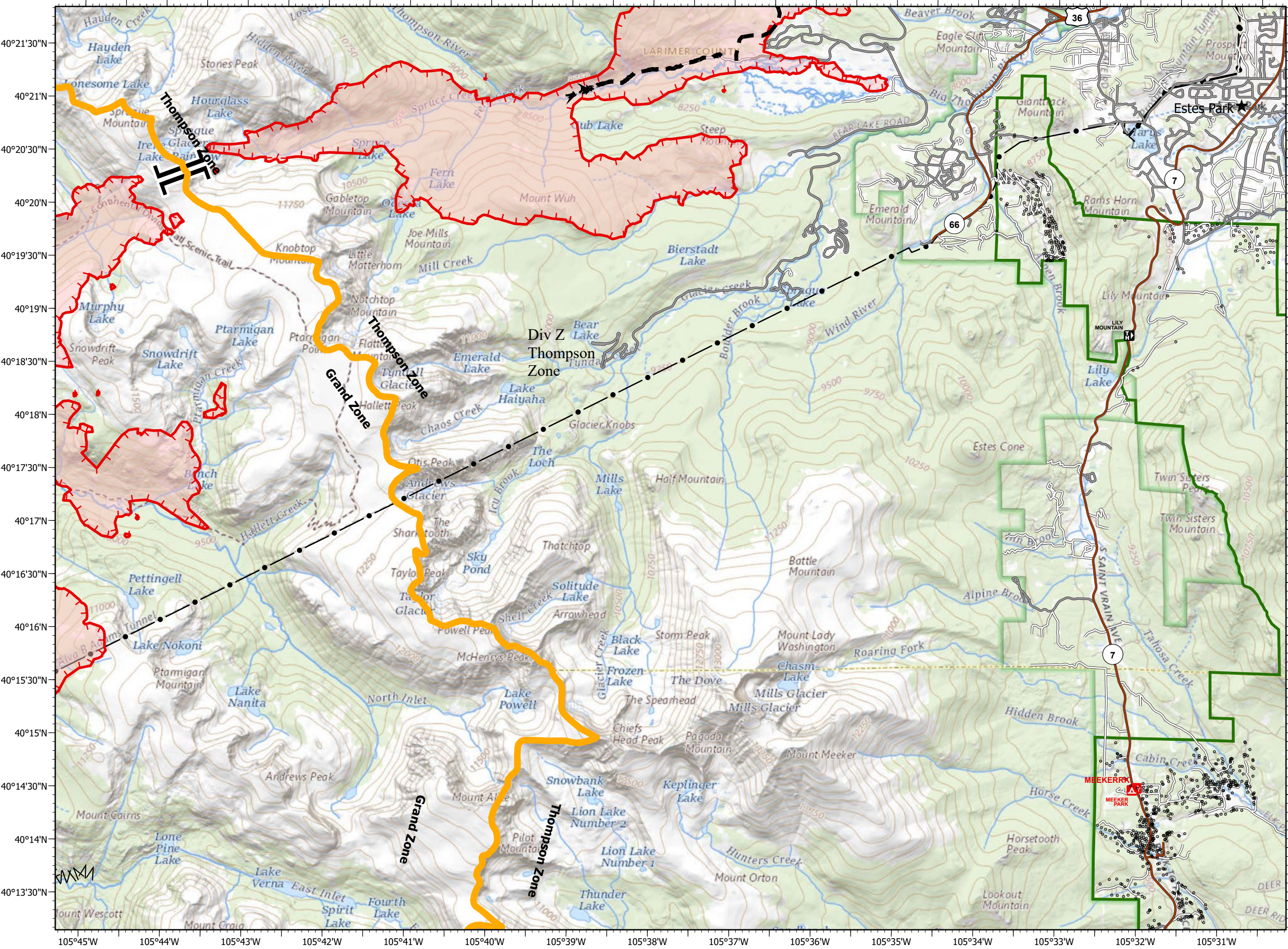
- ### Forest Powerline Data
- PubServCo_CLC411113
 - MtnPrksElectricInc

- ### Utilities
- Power Lines
 - Gas Line
 - Res. Structures
 - Structures Centroids
 - Structure Footprints
 - Zone Break

Fire Perimeter as of 10/27/20 1354 hrs
 193,774 Total Acres
 188,910 Grand Zone
 4,864 Thompson Zone



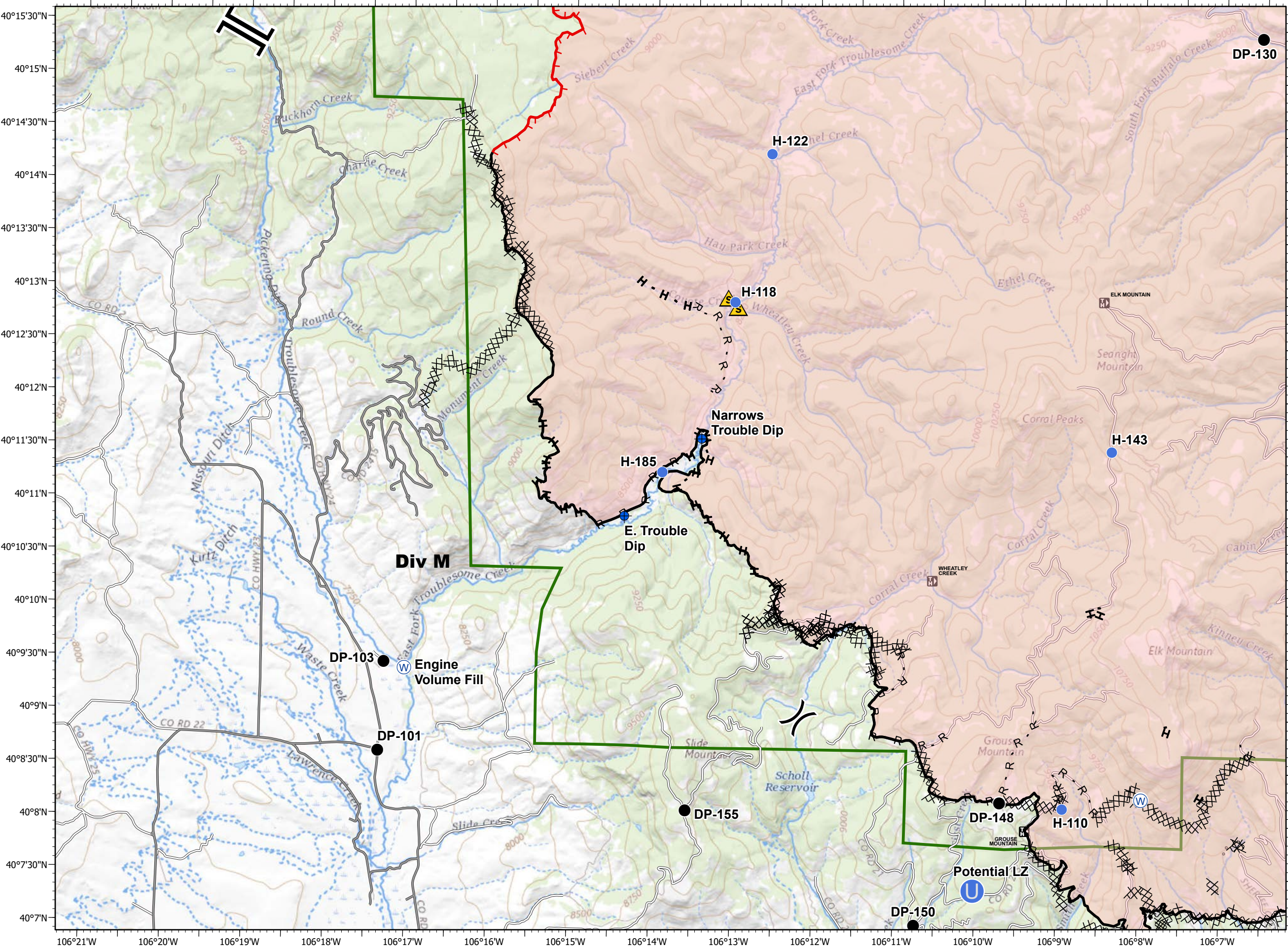
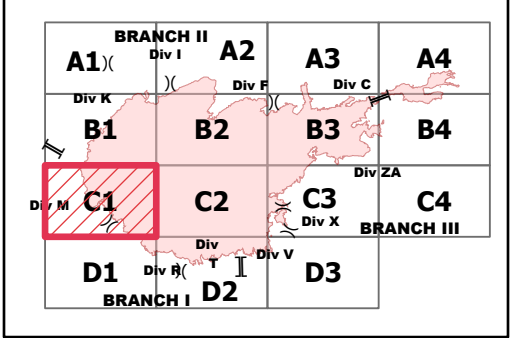
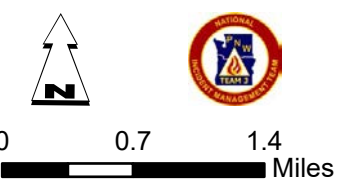
BRANCH II			
A1	A2	A3	A4
Div I		Div F	
B1	B2	B3	B4
Div K		Div C	
Div M		Div X	
C1	C2	C3	C4
Div R		Div V	
D1	D2	D3	
BRANCH I		BRANCH III	



IAP - Page Name: C1
EAST TROUBLESOME CREEK - GRAND ZONE
WY-MRF-000408
10/30/2020

- Dip Site
- Drop Point
- Unimproved Landing Area
- Helispot
- Safety Zone
- Water Source
- Division Break
- Branch Break
- Uncontrolled Fire Edge
- Contained Line
- Completed Dozer Line
- Completed Hand Line
- Road as Completed Line
- Fire Perimeter
- Forest Powerline Data**
- PubServCo_CLC411113
- MtnPrksElectricInc
- Utilities**
- Power Lines
- Gas Line
- Res. Structures
- Structures Centroids
- Structure Footprints
- Zone Break

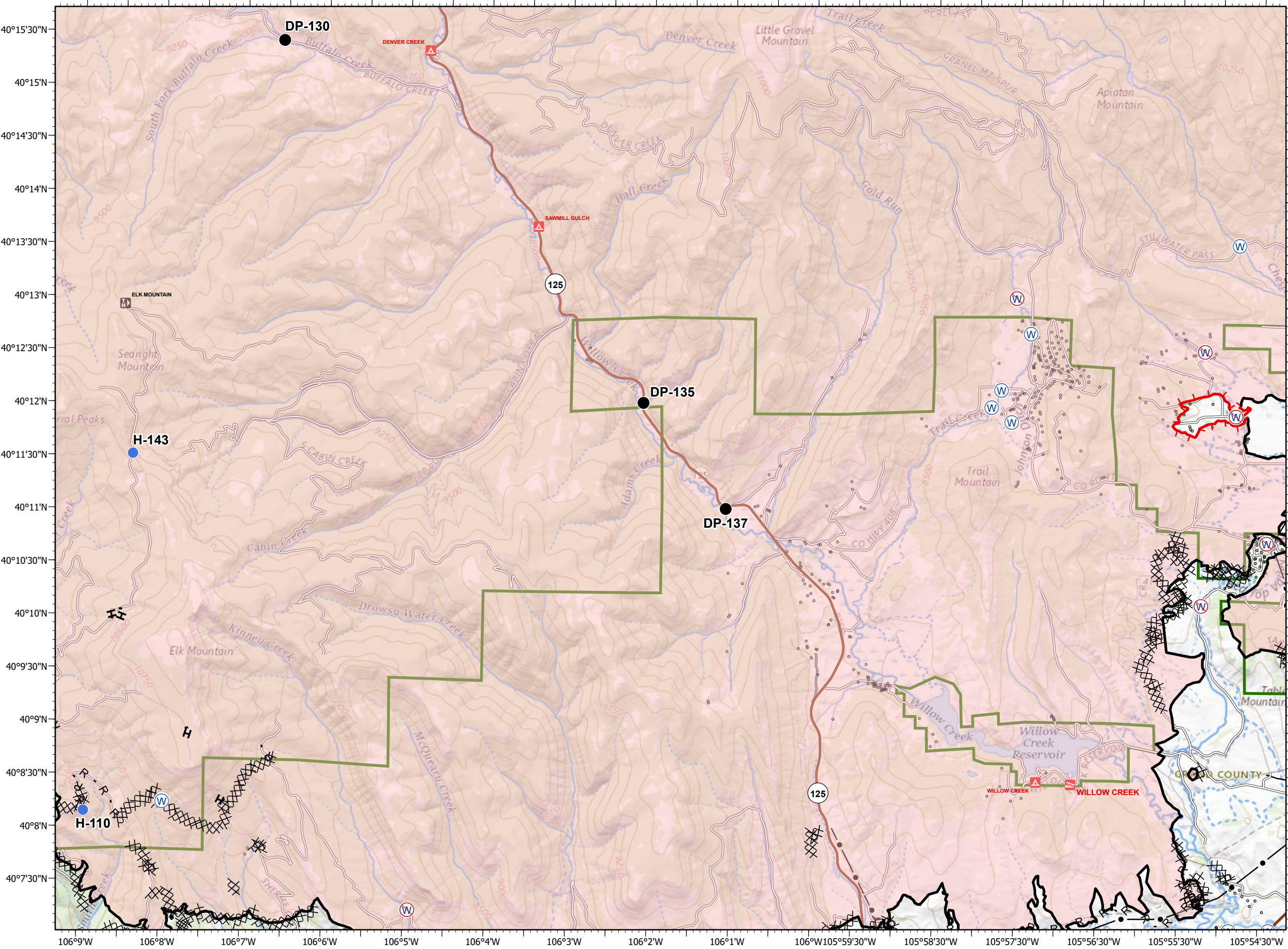
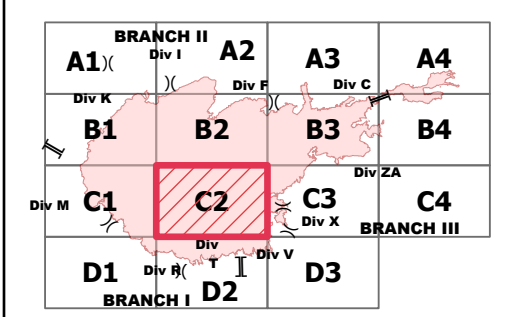
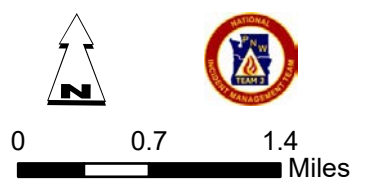
Fire Perimeter as of 10/27/20 1354 hrs
 193,774 Total Acres
 188,910 Grand Zone
 4,864 Thompson Zone



IAP - Page Name: C2
EAST TROUBLESOME CREEK - GRAND ZONE
WY-MRF-000408
10/30/2020

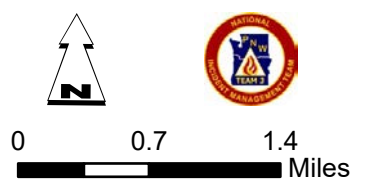
- Drop Point
- Helispot
- ⊕ Water Source
- ⊕ Restricted Water Source
-) (Division Break
- ▬ Uncontrolled Fire Edge
- ▬ Contained Line
- ⊗ Completed Dozer Line
- H Completed Hand Line
- R Road as Completed Line
- ▭ Fire Perimeter
- Forest Powerline Data**
- PubServCo_CLC411113
- MtnPrksElectricInc
- Utilities**
- Power Lines
- ⊕ Gas Line
- Res. Structures
- Structures Centroids
- Structure Footprints
- ▬ Zone Break

Fire Perimeter as of 10/27/20 1354 hrs
 193,774 Total Acres
 188,910 Grand Zone
 4,864 Thompson Zone

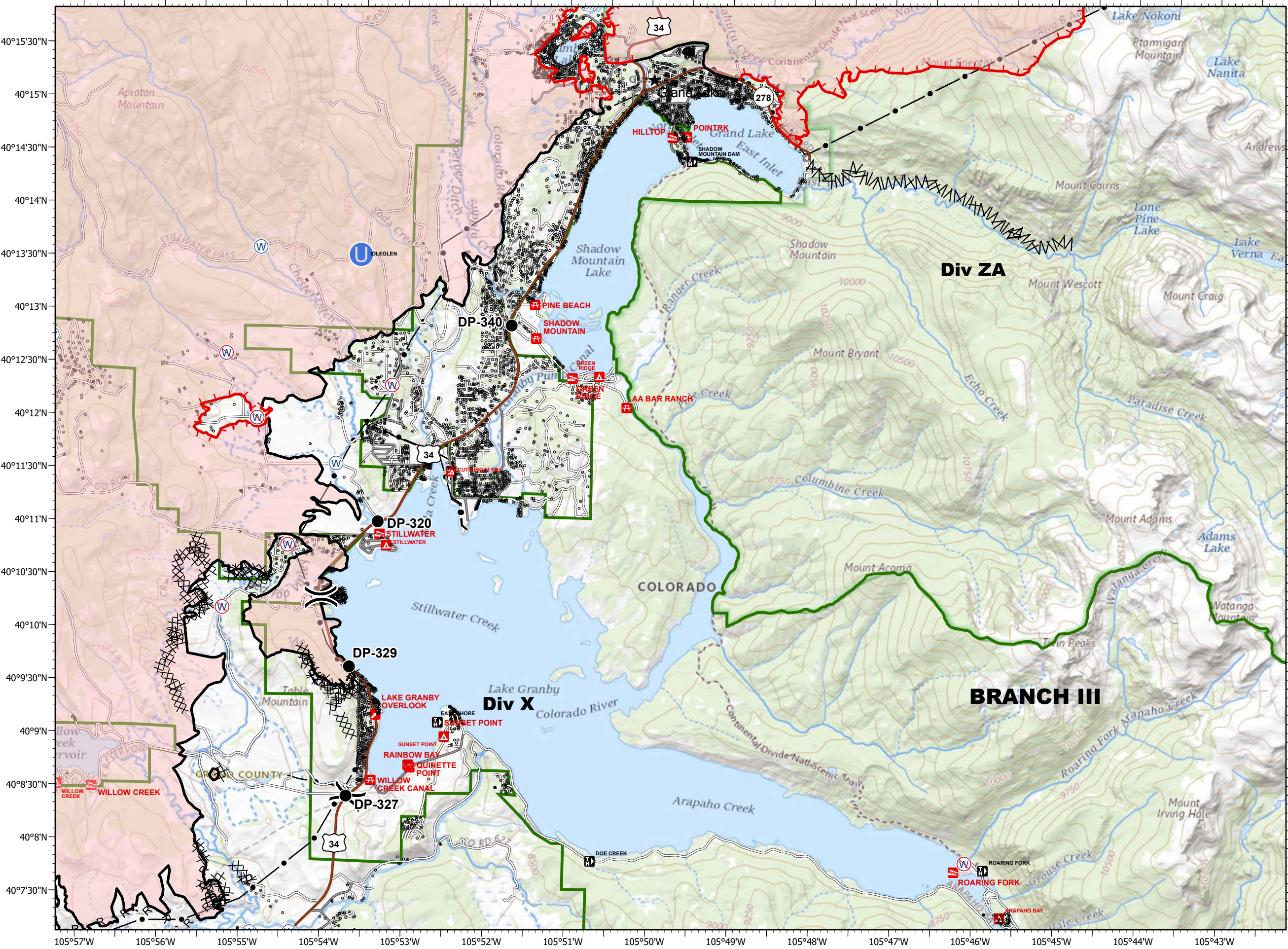


- Drop Point
- Unimproved Landing Area
- W Water Source
- W Restricted Water Source
-) Division Break
- Uncontrolled Fire Edge
- Contained Line
- X Completed Dozer Line
- H Completed Hand Line
- R Road as Completed Line
- Λ Line Break Completed
- Fire Perimeter
- Forest Powerline Data
- PubServCo_CLC411113
- MtnPrksElectricInc
- Utilities
- Power Lines
- Gas Line
- Res. Structures
- Structures Centroids
- Structure Footprints
- Zone Break

Fire Perimeter as of 10/27/20 1354 hrs
 193,774 Total Acres
 188,910 Grand Zone
 4,864 Thompson Zone







BRANCH II		BRANCH III	
A1	A2	A3	A4
B1	B2	B3	B4
C1	C2	C3	C4
D1	D2	D3	



EAST TROUBLESOME CREEK - GRAND ZONE

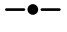
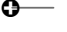




WY-MRF-000408
10/30/2020

-  Zone Break
-  Uncontrolled Fire Edge
-  Line Break Completed
-  Fire Perimeter

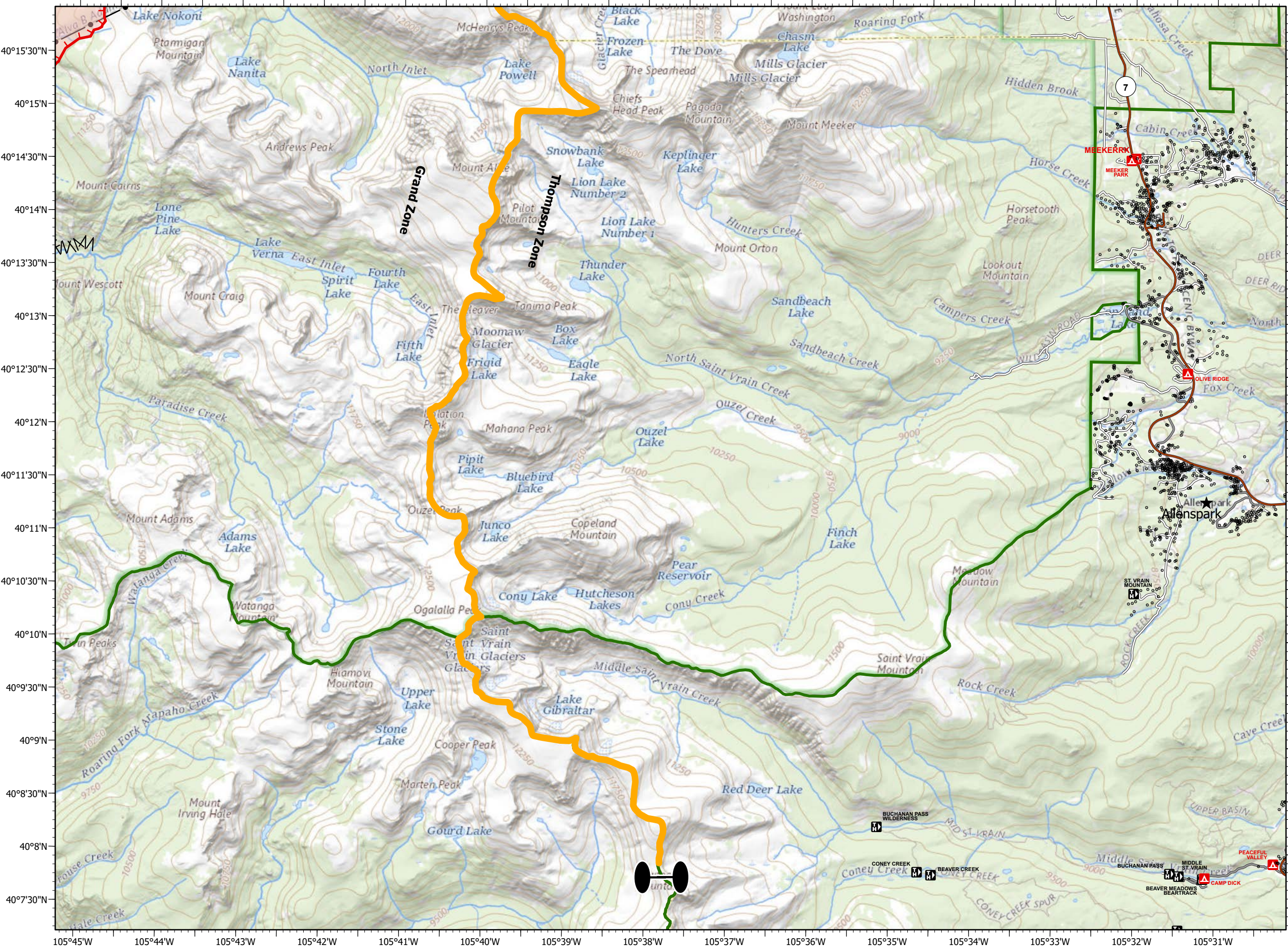
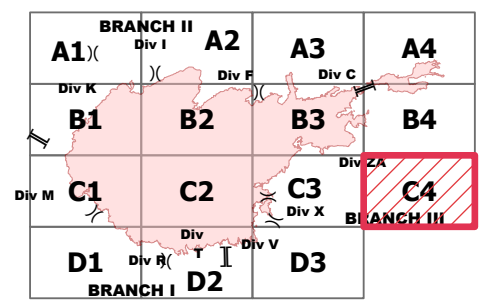
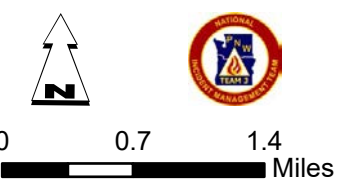
Forest Powerline Data

-  PubServCo_CLC411113
-  MtnPrksElectricInc

Utilities

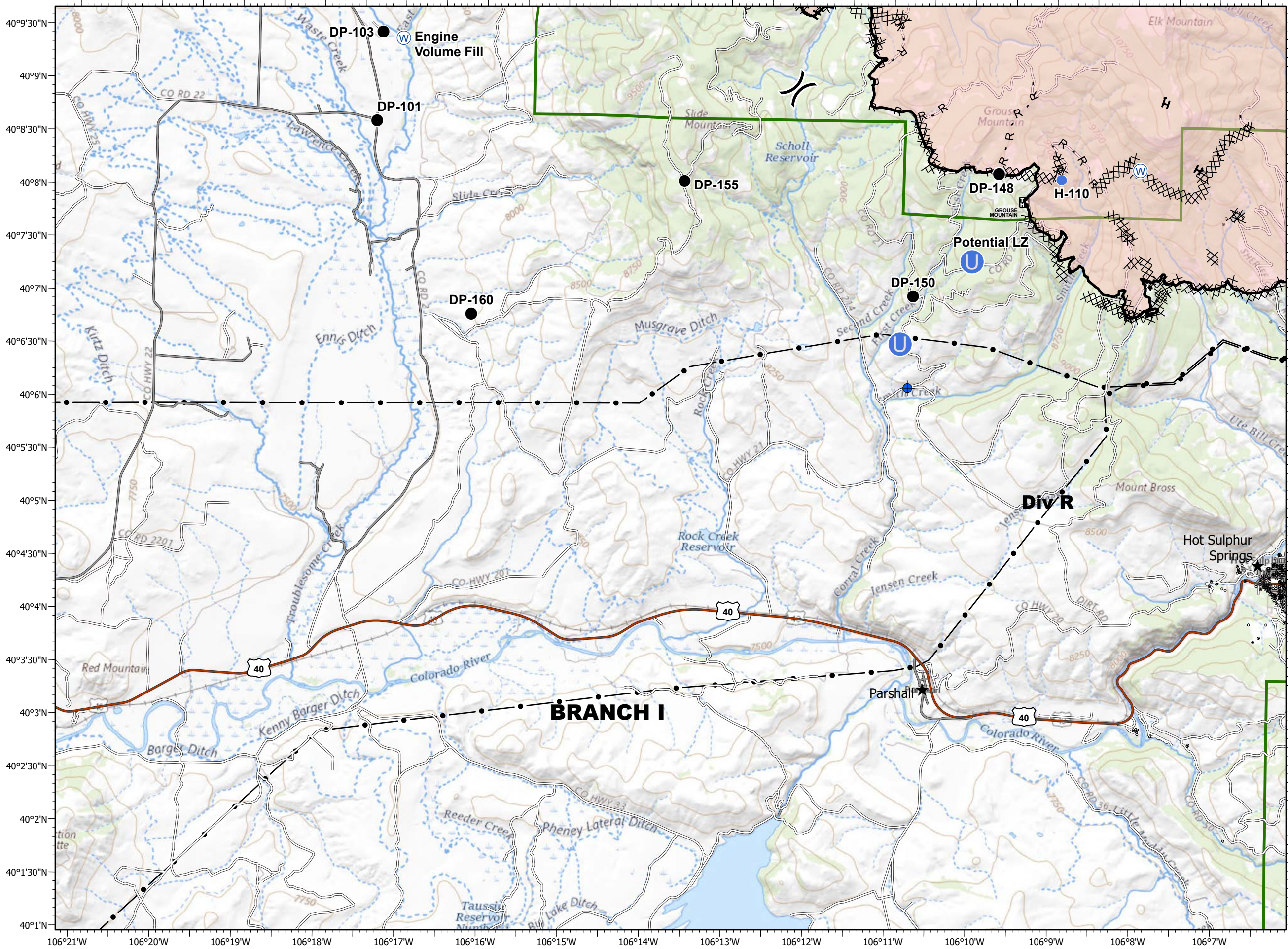
-  Power Lines
-  Gas Line
-  Res. Structures
-  Structures Centroids
-  Structure Footprints
-  Zone Break

Fire Perimeter as of 10/27/20 1354 hrs
 193,774 Total Acres
 188,910 Grand Zone
 4,864 Thompson Zone



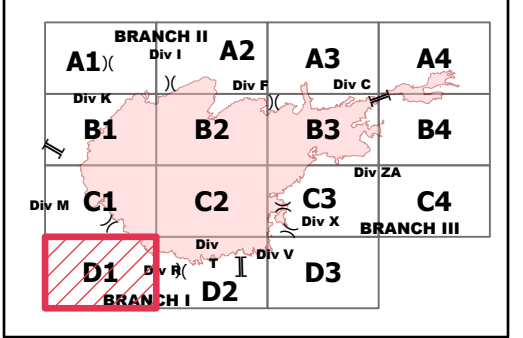
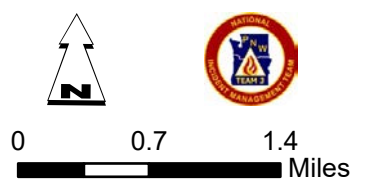
40°15'30"N
40°15'N
40°14'30"N
40°14'N
40°13'30"N
40°13'N
40°12'30"N
40°12'N
40°11'30"N
40°11'N
40°10'30"N
40°10'N
40°9'30"N
40°9'N
40°8'30"N
40°8'N
40°7'30"N

105°45'W 105°44'W 105°43'W 105°42'W 105°41'W 105°40'W 105°39'W 105°38'W 105°37'W 105°36'W 105°35'W 105°34'W 105°33'W 105°32'W 105°31'W



- Dip Site
 - Drop Point
 - Unimproved Landing Area
 - Helispot
 - Water Source
 - Division Break
 - Contained Line
 - Completed Dozer Line
 - Completed Hand Line
 - Road as Completed Line
 - Fire Perimeter
- Forest Powerline Data**
- PubServCo_CLC411113
 - MtnPrksElectricInc
- Utilities**
- Power Lines
 - Gas Line
 - Res. Structures
 - Structures Centroids
 - Structure Footprints
 - Zone Break

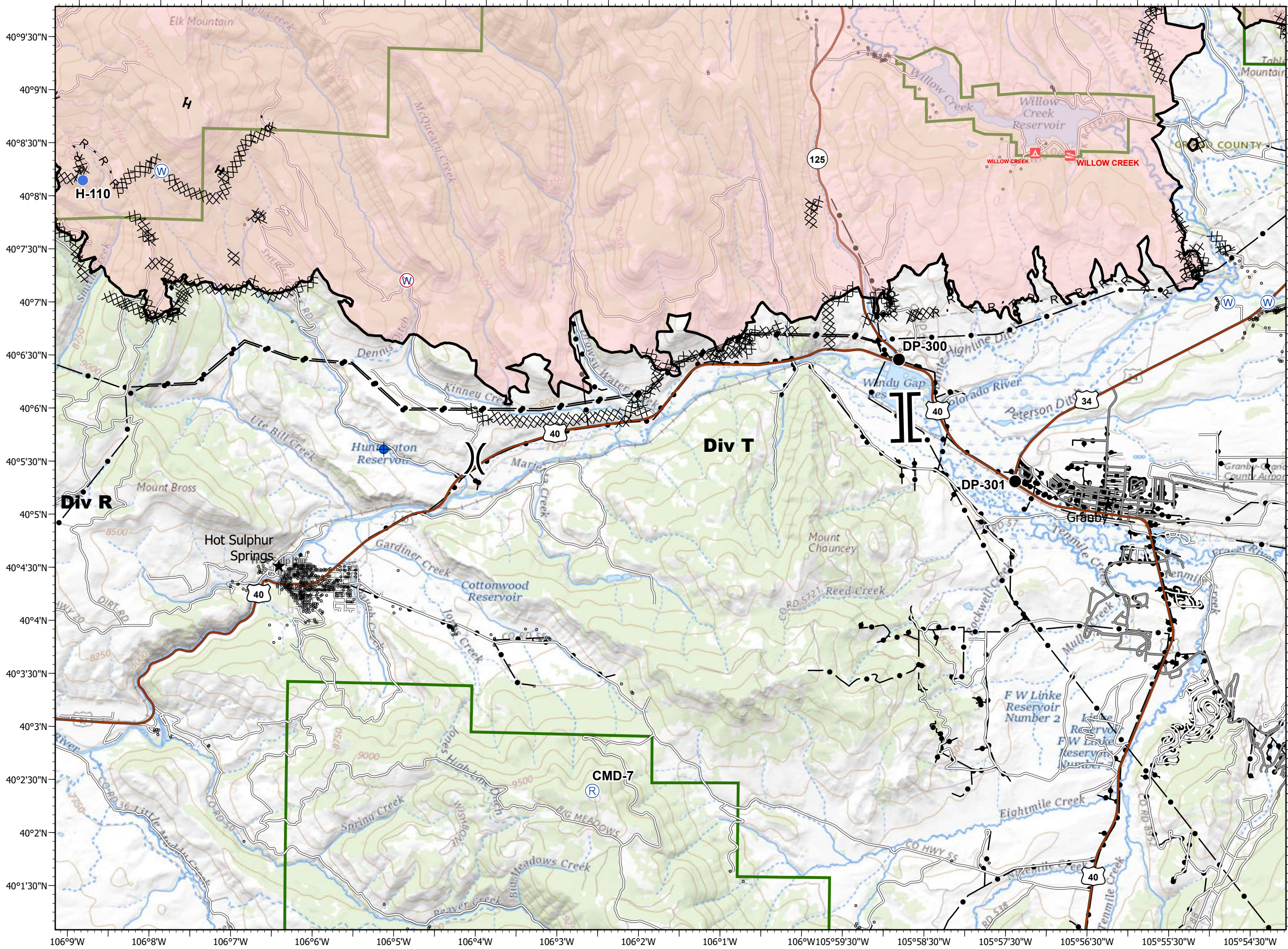
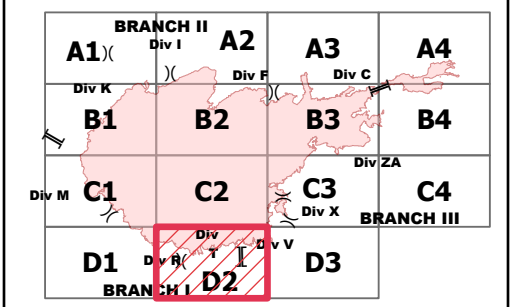
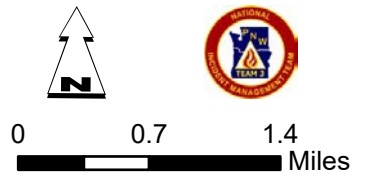
Fire Perimeter as of 10/27/20 1354 hrs
 193,774 Total Acres
 188,910 Grand Zone
 4,864 Thompson Zone



IAP - Page Name: D2
EAST TROUBLESOME CREEK - GRAND ZONE
WY-MRF-000408
10/30/2020

- Dip Site
- Drop Point
- Helispot
- Repeater
- Water Source
- Restricted Water Source
- Division Break
- Branch Break
- Contained Line
- Completed Dozer Line
- Completed Hand Line
- Road as Completed Line
- Fire Perimeter
- Forest Powerline Data**
- PubServCo_CLC411113
- MtnPrksElectricInc
- Utilities**
- Power Lines
- Gas Line
- Res. Structures
- Structures Centroids
- Structure Footprints
- Zone Break

Fire Perimeter as of 10/27/20 1354 hrs
 193,774 Total Acres
 188,910 Grand Zone
 4,864 Thompson Zone



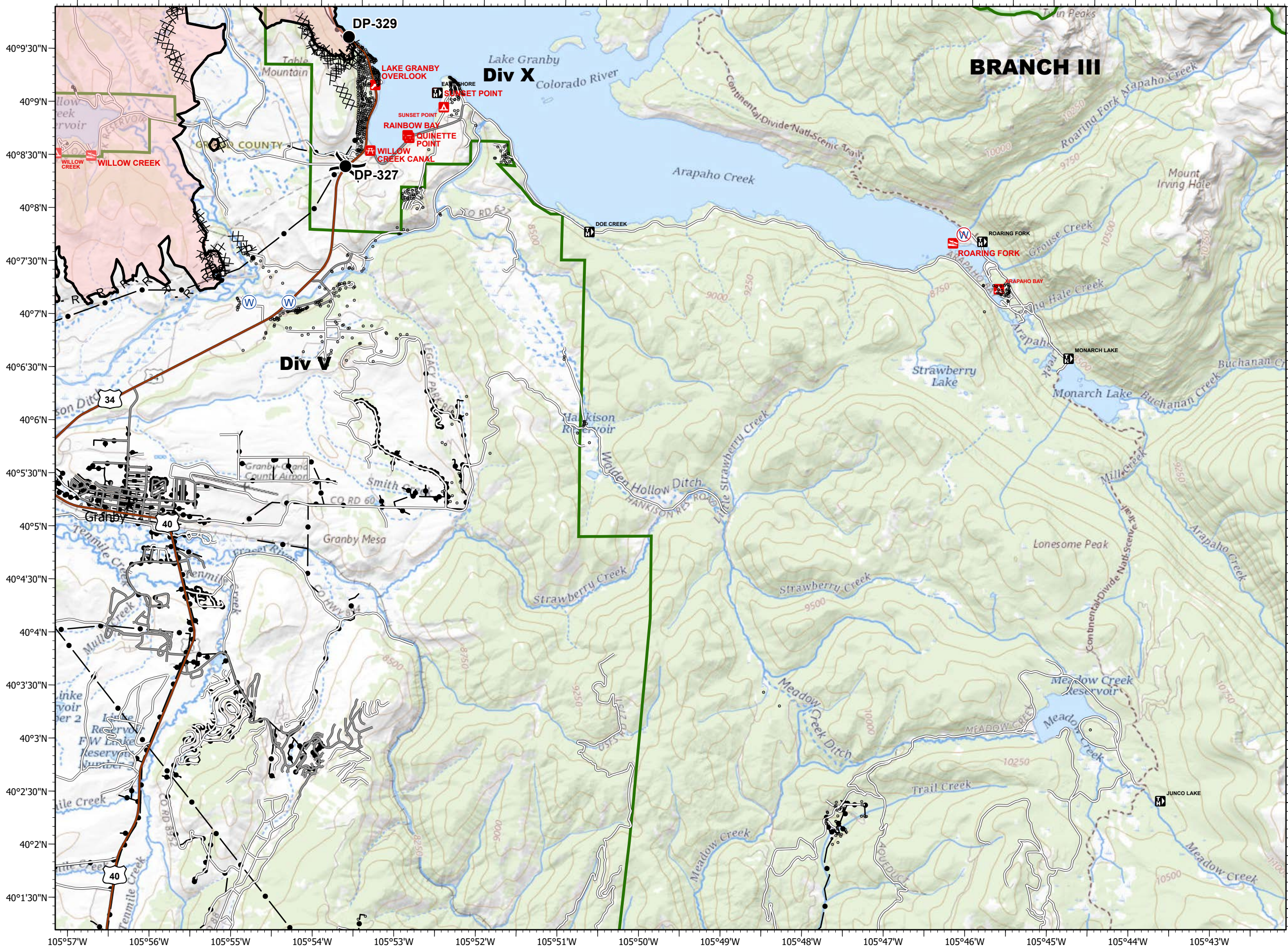
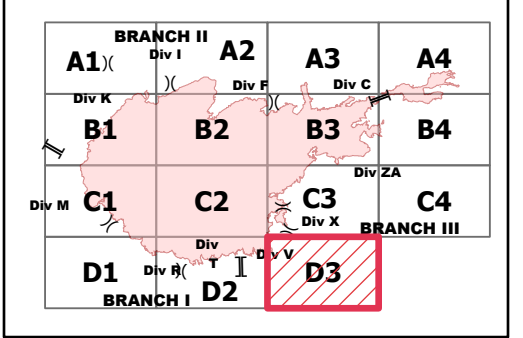
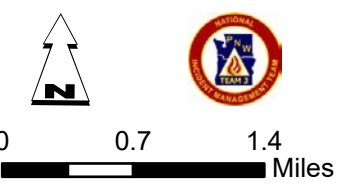
EAST TROUBLESOME CREEK - GRAND ZONE

WY-MRF-000408

10/30/2020

- Drop Point
 - ⊕ Water Source
 - ⊕ Restricted Water Source
 -) Division Break
 - Contained Line
 - ⊗ Completed Dozer Line
 - H Completed Hand Line
 - R Road as Completed Line
 - Fire Perimeter
- Forest Powerline Data**
- PubServCo_CLC411113
 - MtnPrksElectricInc
- Utilities**
- Power Lines
 - ⊕ Gas Line
 - Res. Structures
 - Structures Centroids
 - Structure Footprints
 - ▬ Zone Break

Fire Perimeter as of 10/27/20 1354 hrs
 193,774 Total Acres
 188,910 Grand Zone
 4,864 Thompson Zone



40°9'30"N
40°9'N
40°8'30"N
40°8'N
40°7'30"N
40°7'N
40°6'30"N
40°6'N
40°5'30"N
40°5'N
40°4'30"N
40°4'N
40°3'30"N
40°3'N
40°2'30"N
40°2'N
40°1'30"N

105°57'W 105°56'W 105°55'W 105°54'W 105°53'W 105°52'W 105°51'W 105°50'W 105°49'W 105°48'W 105°47'W 105°46'W 105°45'W 105°44'W 105°43'W