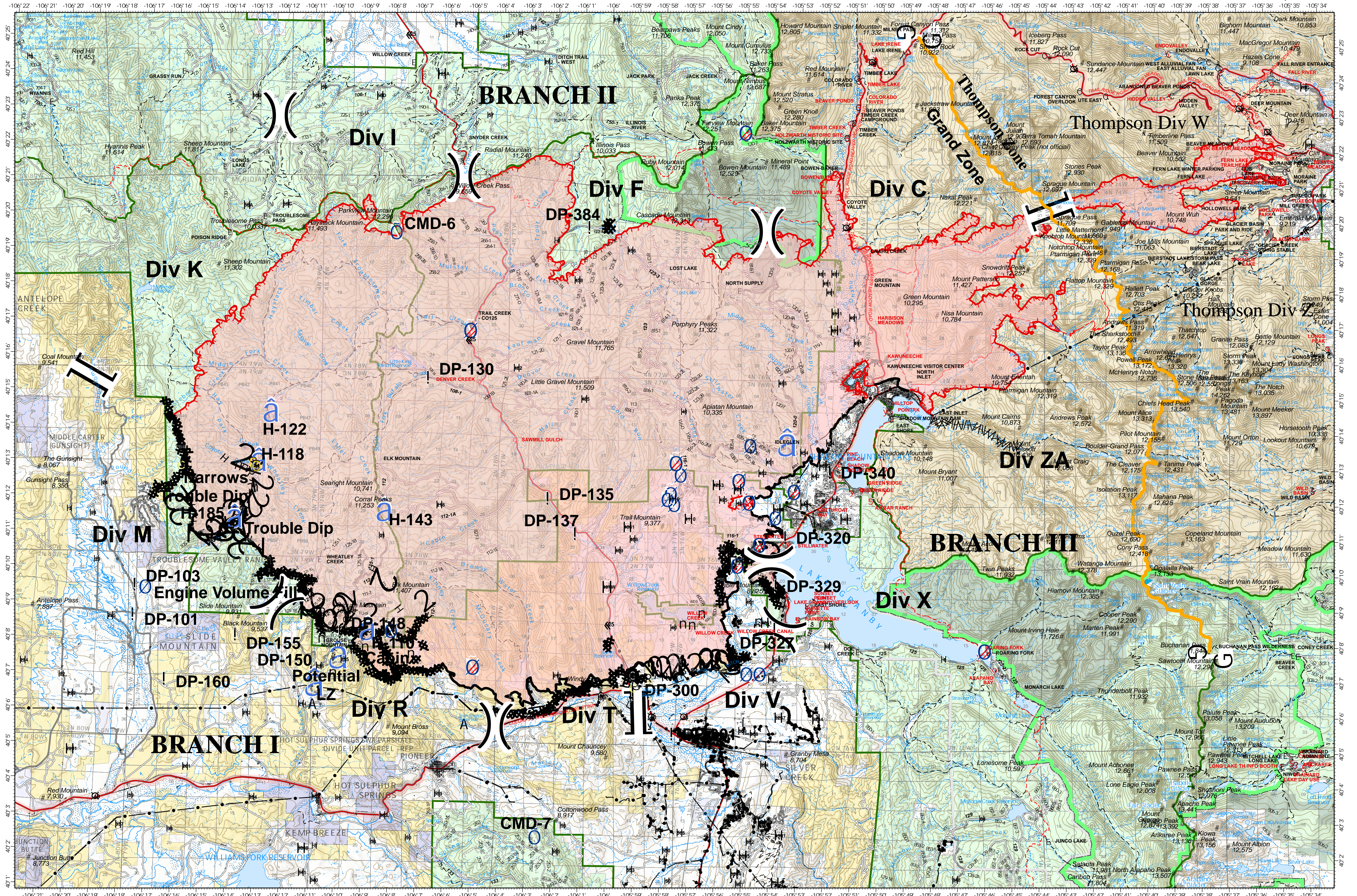


OPERATIONS - EAST TROUBLESOME CREEK - GRAND ZONE

OCTOBER 30, 2020



EAST TROUBLESOME CREEK - GRAND ZONE
WY-MRF-000408

10/27/20 1354 hrs
 193,774 Total Acres
 188,910 Grand Zone
 4,864 Thompson Zone

- | | | | | | | | | | | | | | |
|---|-------------------------|---|-------------------------|---|------------------------|---|------------------------|---|---------------------------|---|----------------------------|---|-------------------------------|
| A | Dip Site | ⊙ | Repeater | ⊕ | Zone Break | ⊗ | Completed Dozer Line | 🏠 | Surface Management Agency | 🌿 | National Grasslands | 🏠 | Bankhead-Jones Land Use Lands |
| ! | Drop Point | Ⓜ | Safety Zone | G | Division Break | ⊗ | Completed Hand Line | 🏠 | Bureau of Land Management | 🌿 | National Park Service | 🏠 | US Fish and Wildlife Service |
| ⚠ | Hazard | Ⓜ | Water Source | Ⓜ | Branch Break | ⊗ | Road as Completed Line | 🏠 | Bureau of Reclamation | 🏠 | Other Federal | 🌿 | US Forest Service |
| Ⓜ | Helibase | Ⓜ | Restricted Water Source | Ⓜ | Line Break Completed | Ⓜ | Proposed Dozer Line | 🏠 | Indian Reservation | 🏠 | Private | 🌿 | Zone Break |
| Ⓜ | Unimproved Landing Area | Ⓜ | Value at Risk | Ⓜ | Uncontrolled Fire Edge | Ⓜ | Contained Line | 🏠 | Military Reservation | 🏠 | State | 🌿 | World Hillshade |
| Ⓜ | Helispot | | | | | | | | | 🏠 | State, County, City, Areas | | |

Map Projection: UTM Zone 13, NAD83

0 2 4 Miles