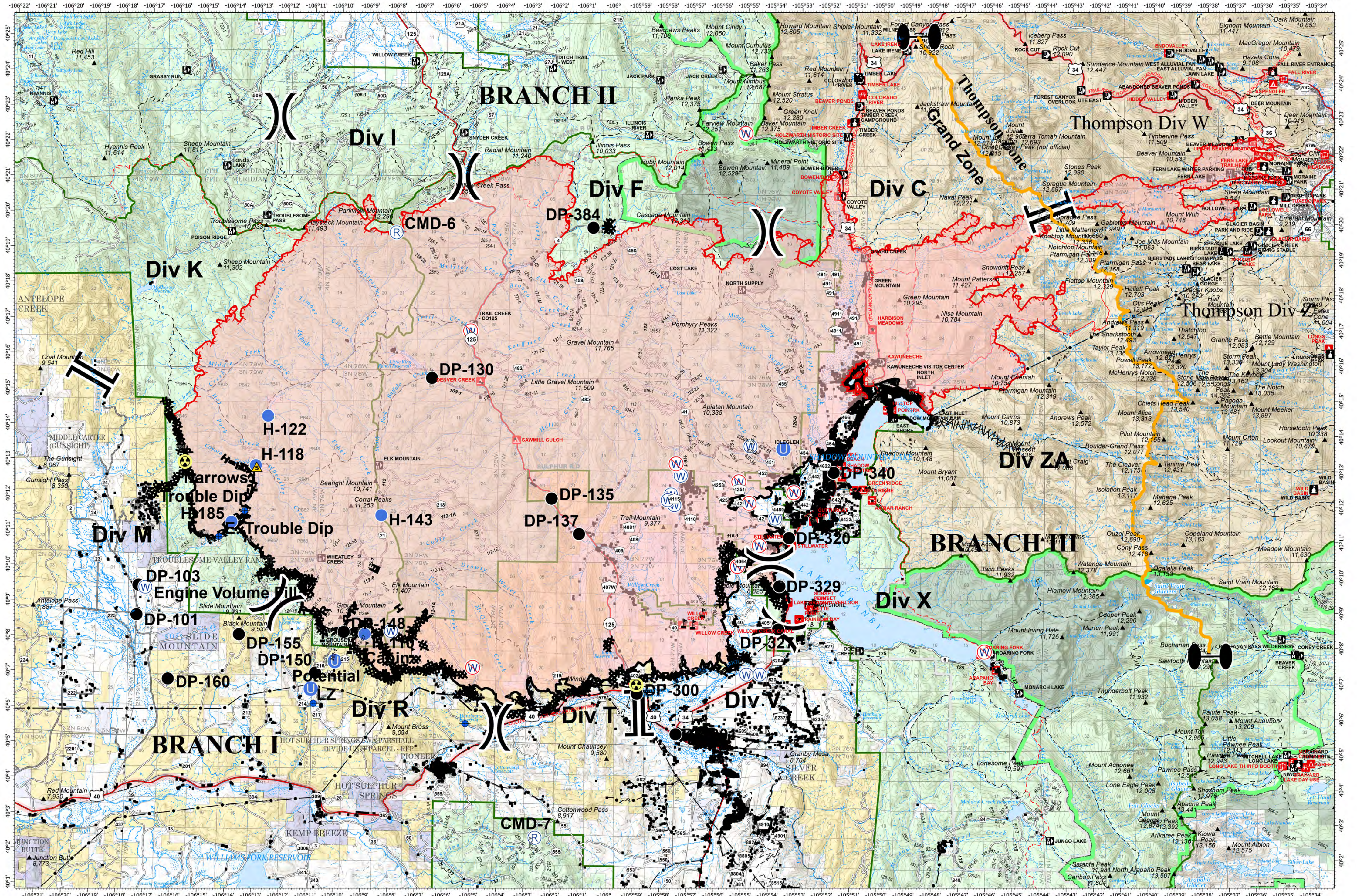


# OPERATIONS - EAST TROUBLESOME CREEK - GRAND ZONE

OCTOBER 31, 2020



**EAST TROUBLESOME CREEK - GRAND ZONE**  
**WY-MRF-000408**

10/27/20 1354 hrs  
 193,774 Total Acres  
 188,910 Grand Zone  
 4,864 Thompson Zone

- Dip Site
- Drop Point
- ⚠ Hazard
- ⊙ Helibase
- ⬮ Unimproved Landing Area
- ⬮ Helispot
- ⊙ Repeater
- ⚠ Safety Zone
- ⊙ Water Source
- ⊙ Restricted Water Source
- ⬮ Value at Risk
- ⬮ Zone Break
- ⌋ Division Break
- ⌋ Branch Break
- ⬮ Uncontrolled Fire Edge
- ⬮ Contained Line
- ⬮ Completed Dozer Line
- ⬮ Completed Hand Line
- ⬮ Road as Completed Line
- ⬮ Line Break Completed
- ⬮ Proposed Dozer Line

- Surface Management Agency**
- Bureau of Land Management
  - Bureau of Reclamation
  - Indian Reservation
  - Military Reservation
  - National Grasslands
  - National Park Service
  - Other Federal
  - Private
  - State
  - State, County, City; Areas

- Bankhead-Jones Land Use Lands
- US Fish and Wildlife Service
- US Forest Service
- ⬮ Zone Break
- World Hillshade

Map Projection: UTM Zone 13, NAD83

0 2 4 Miles