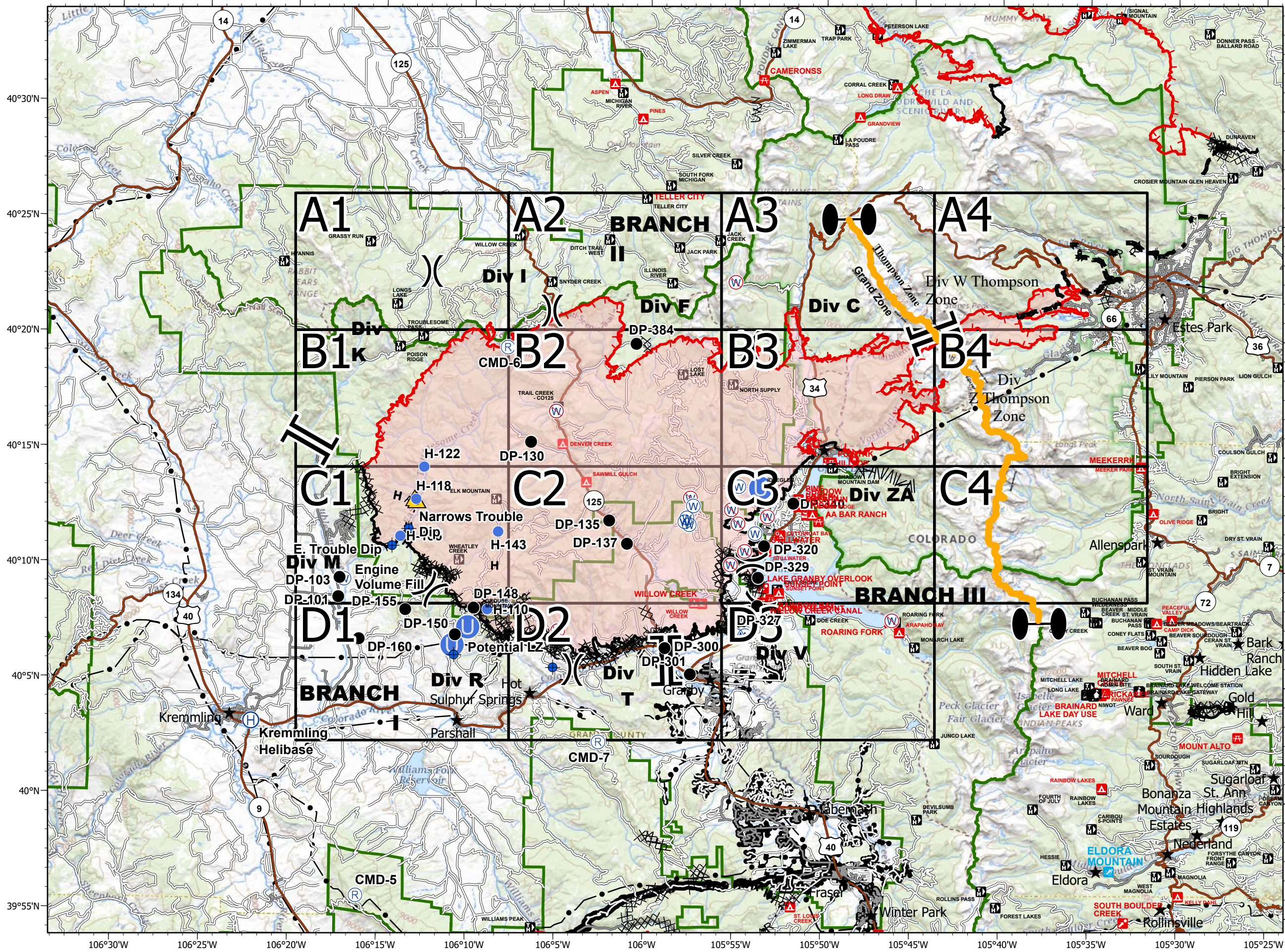
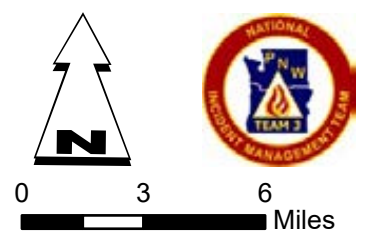


EAST TROUBLESOME CREEK - GRAND ZONE WY-MRF-000408

Fire Perimeter as of 10/27/20 1354 hrs
193,774 Total Acres
188,910 Grand Zone
4,864 Thompson Zone



- Dip Site
 - Drop Point
 - Helibase
 - Unimproved Landing Area
 - Helispot
 - Repeater
 - Safety Zone
 - Water Source
 - Restricted Water Source
 - Zone Break
 - Division Break
 - Branch Break
 - Uncontrolled Fire Edge
 - Contained Line
 - Completed Dozer Line
 - Completed Hand Line
 - Road as Completed Line
 - Line Break Completed
 - Fire Break Planned or Incomplete
 - Planned Fire Line
 - Fire Perimeter
- SITE_TYPE**
- INFO SITE/FEE STATION
 - CAMPGROUND
 - GROUP CAMPGROUND
 - TRAILHEAD
 - PICNIC SITE
 - GROUP PICNIC SITE
 - BOATING SITE
 - INTERPRETIVE SITE; INTERPRETIVE SITE (ADMIN)
 - SKI AREA ALPINE
- Forest Powerline Data**
- PubServCo_CLC411113
 - MtnPrksElectricInc
- Utilities**
- Power Lines
 - Gas Line
 - Zone Break

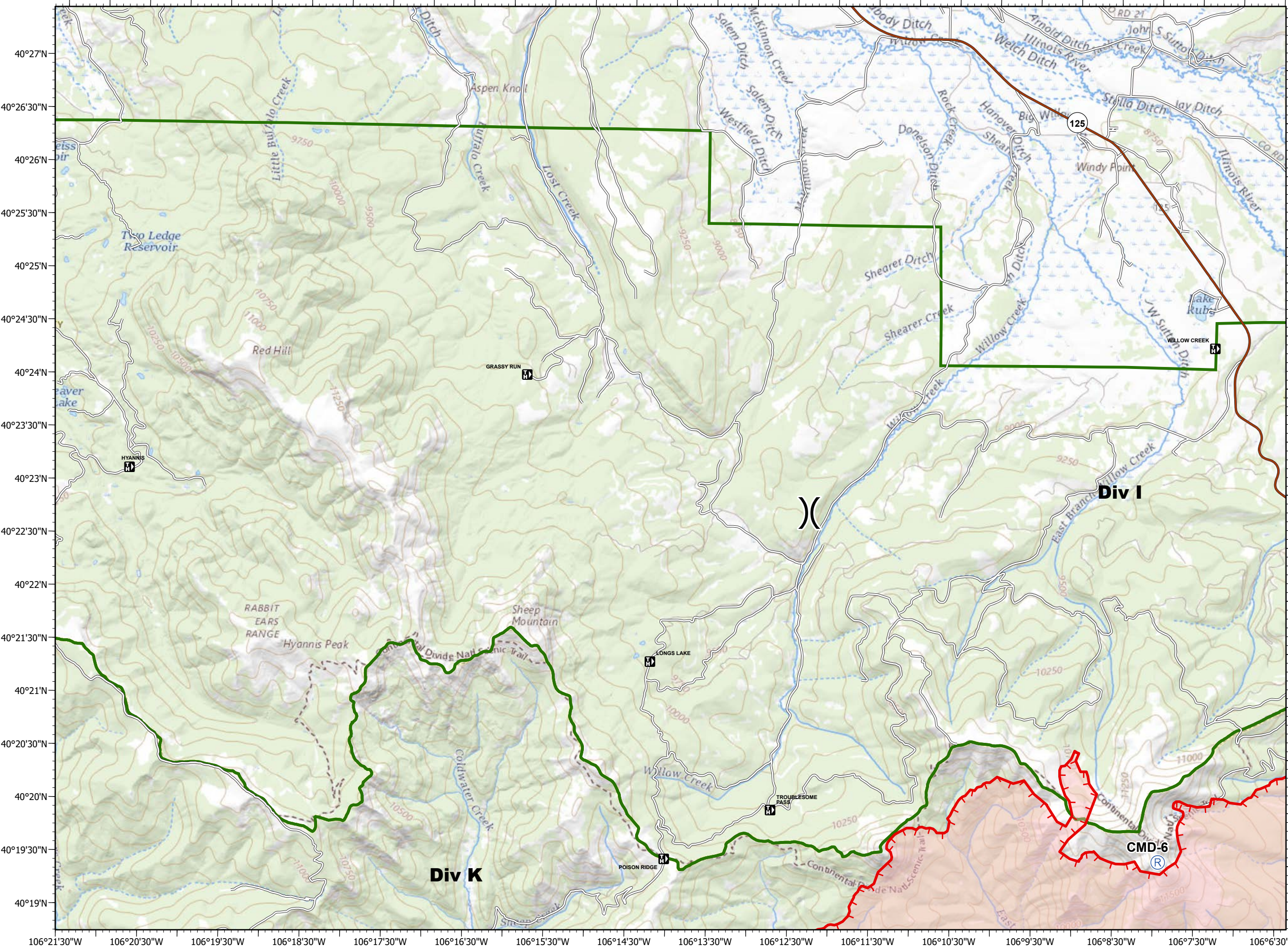
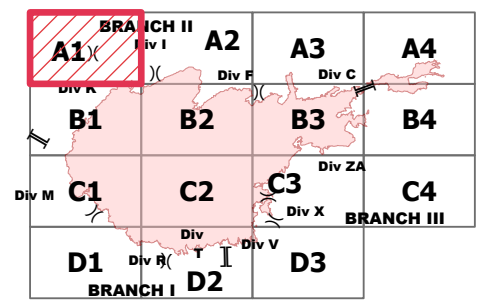
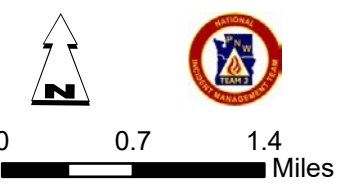


- Repeater
- Division Break
- Uncontrolled Fire Edge
- Fire Perimeter

- Forest Powerline Data**
- PubServCo_CLC411113
 - MtnPrksElectricInc

- Utilities**
- Power Lines
 - Gas Line
 - Res. Structures
 - Structures Centroids
 - Structure Footprints
 - Zone Break

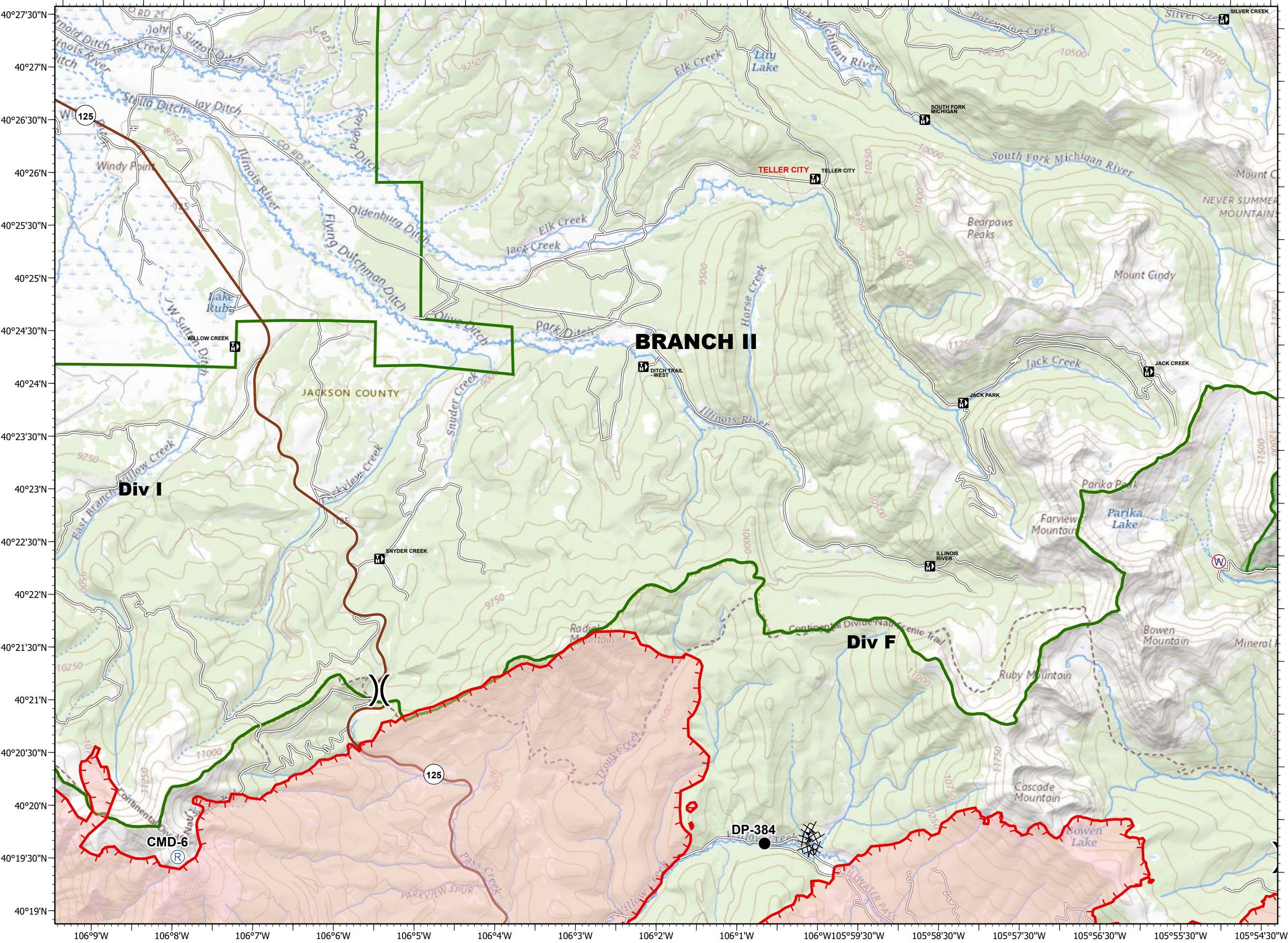
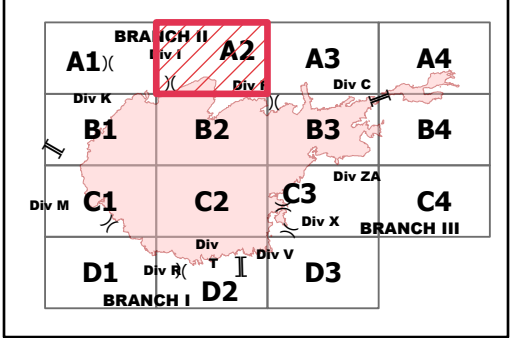
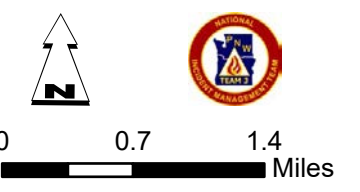
Fire Perimeter as of 10/27/20 1354 hrs
 193,774 Total Acres
 188,910 Grand Zone
 4,864 Thompson Zone



106°21'30"W 106°20'30"W 106°19'30"W 106°18'30"W 106°17'30"W 106°16'30"W 106°15'30"W 106°14'30"W 106°13'30"W 106°12'30"W 106°11'30"W 106°10'30"W 106°9'30"W 106°8'30"W 106°7'30"W 106°6'30"W



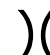



- Drop Point
- Ⓡ Repeater
- Ⓡ Restricted Water Source
-) (Division Break
- Uncontrolled Fire Edge
- XXXX Completed Dozer Line
- Fire Perimeter
- Forest Powerline Data**
- PubServCo_CLC411113
- MtnPrksElectricInc
- Utilities**
- Power Lines
- ⊕ Gas Line
- Res. Structures
- Structures Centroids
- Structure Footprints
- Zone Break



Fire Perimeter as of 10/27/20 1354 hrs
 193,774 Total Acres
 188,910 Grand Zone
 4,864 Thompson Zone

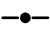







40°27'30"N
 40°27'N
 40°26'30"N
 40°26'N
 40°25'30"N
 40°25'N
 40°24'30"N
 40°24'N
 40°23'30"N
 40°23'N
 40°22'30"N
 40°22'N
 40°21'30"N
 40°21'N
 40°20'30"N
 40°20'N
 40°19'30"N
 40°19'N

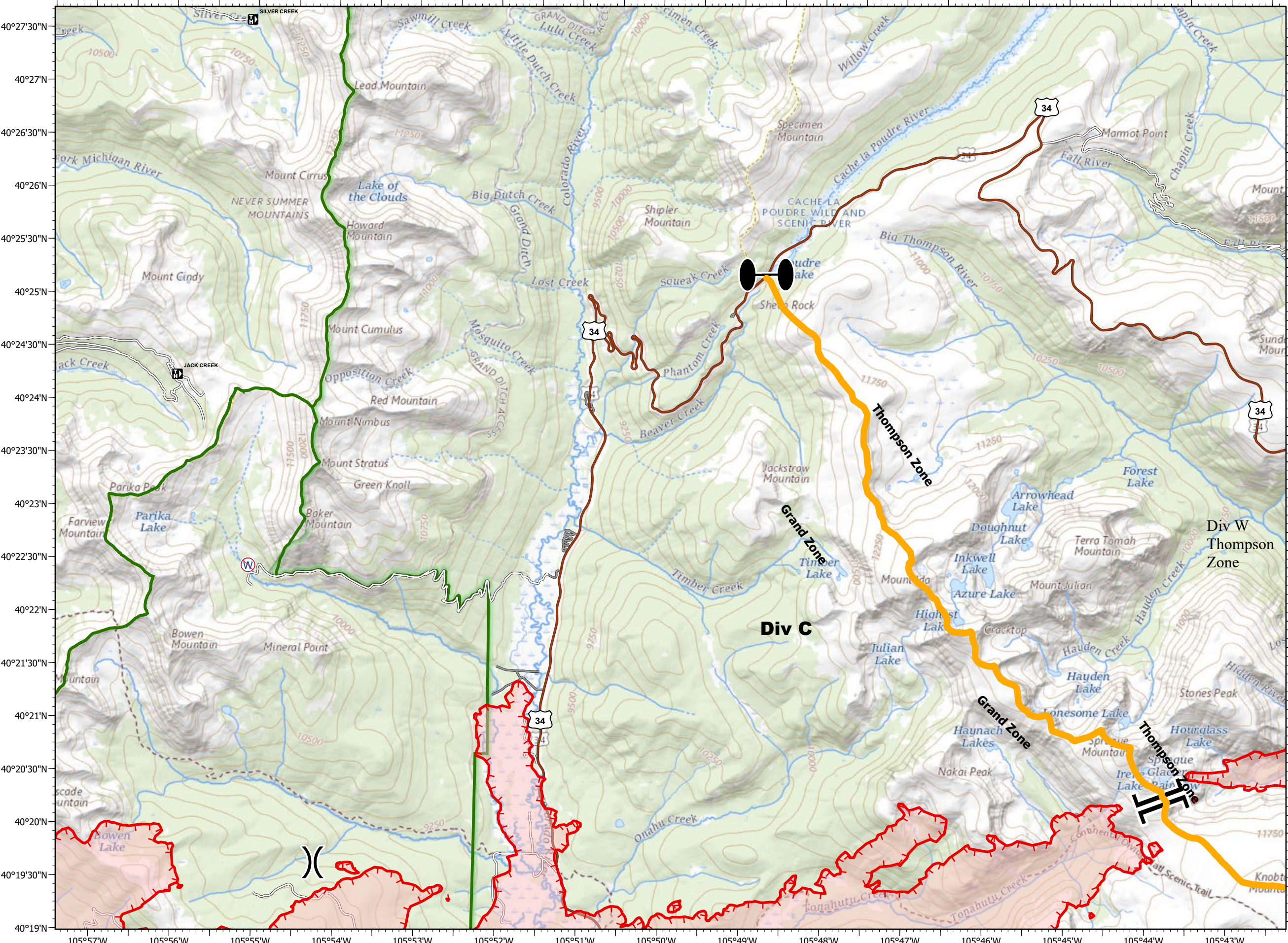
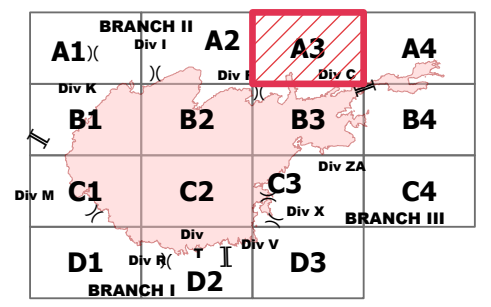
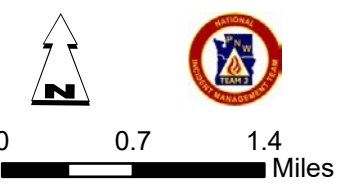
106°9'W 106°8'W 106°7'W 106°6'W 106°5'W 106°4'W 106°3'W 106°2'W 106°1'W 106°W 105°59'30"W 105°58'30"W 105°57'30"W 105°56'30"W 105°55'30"W 105°54'30"W

-  Restricted Water Source
-  Zone Break
-  Division Break
-  Branch Break
-  Uncontrolled Fire Edge
-  Fire Perimeter

- Forest Powerline Data**
-  PubServCo_CLC411113
 -  MtnPrksElectricInc

- Utilities**
-  Power Lines
 -  Gas Line
 -  Res. Structures
 -  Structures Centroids
 -  Structure Footprints
 -  Zone Break

Fire Perimeter as of 10/27/20 1354 hrs
 193,774 Total Acres
 188,910 Grand Zone
 4,864 Thompson Zone

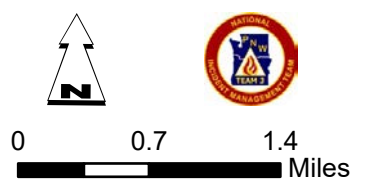


- Branch Break
- Uncontrolled Fire Edge
- Completed Dozer Line
- Completed Hand Line
- Road as Completed Line
- Planned Fire Line
- Fire Perimeter

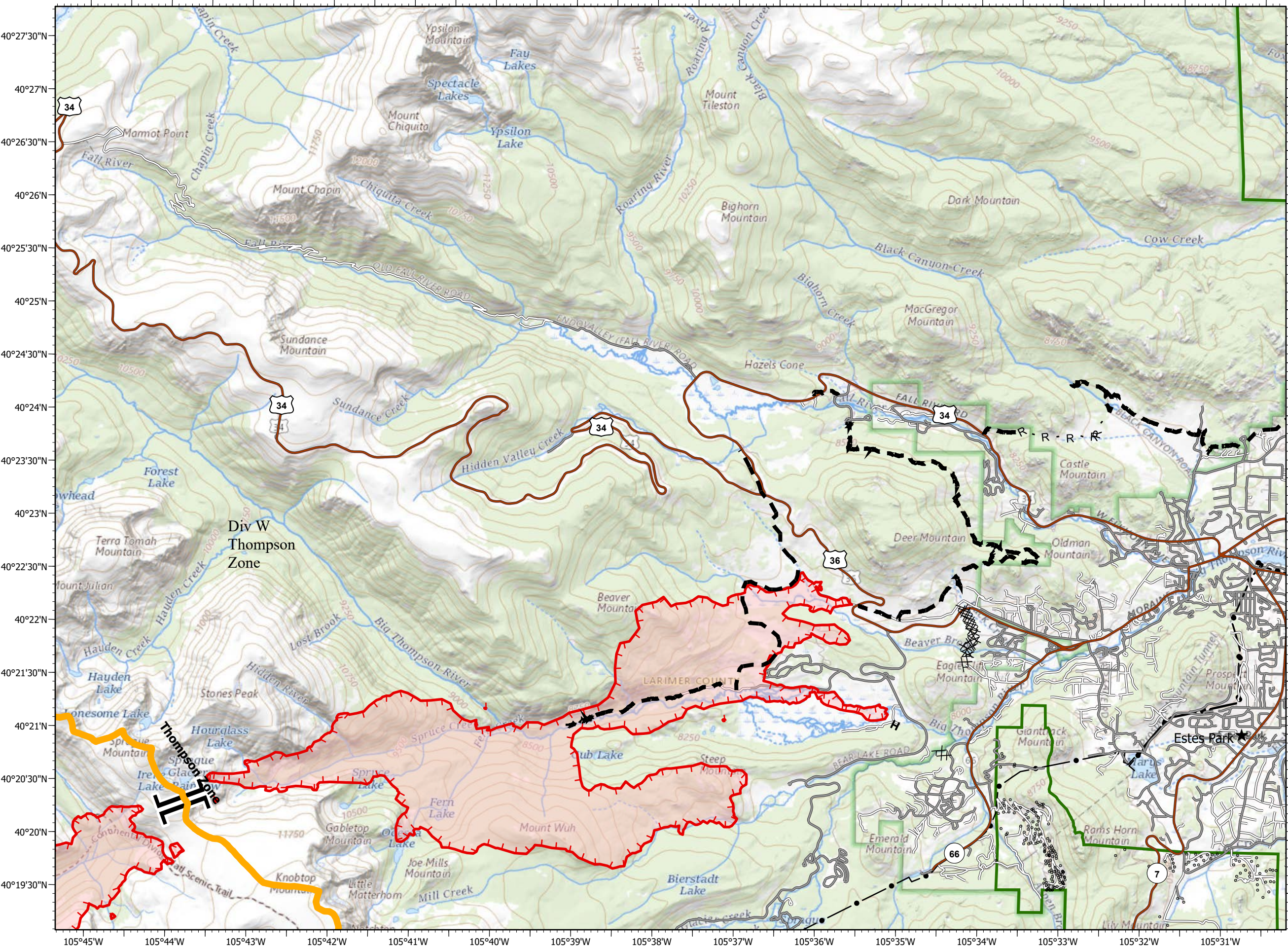
- Forest Powerline Data**
- PubServCo_CLC411113
 - MtnPrksElectricInc

- Utilities**
- Power Lines
 - Gas Line
 - Res. Structures
 - Structures Centroids
 - Structure Footprints
 - Zone Break

Fire Perimeter as of 10/27/20 1354 hrs
 193,774 Total Acres
 188,910 Grand Zone
 4,864 Thompson Zone



BRANCH II			
A1	A2	A3	A4
Div I	Div F	Div C	
B1	B2	B3	B4
Div K		Div Z	
C1	C2	C3	C4
Div M	Div X	Div X	BRANCH III
D1	D2	D3	
BRANCH I	Div T	Div V	



EAST TROUBLESOME CREEK - GRAND ZONE

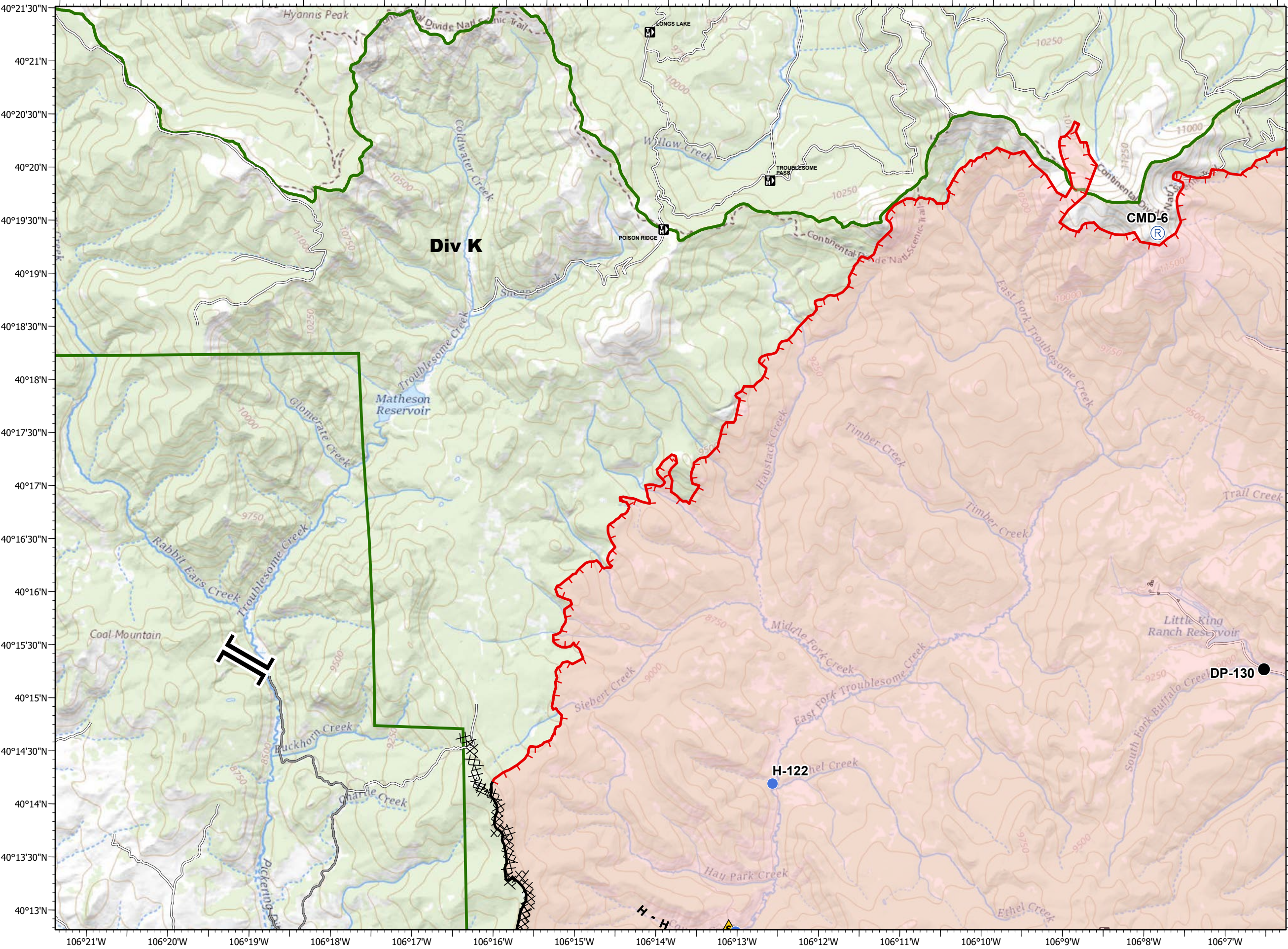
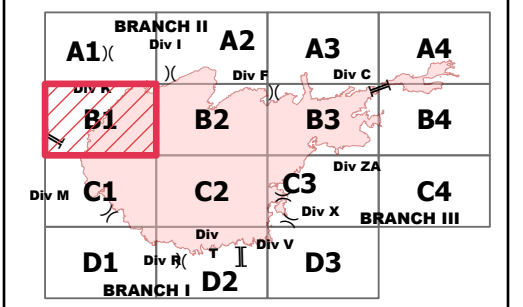
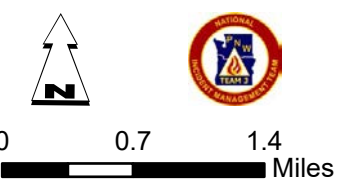
WY-MRF-000408
10/31/2020

- Drop Point
- Helispot
- Ⓡ Repeater
- ▲ Safety Zone
-]] Branch Break
- Uncontrolled Fire Edge
- Contained Line
- ⊗ Completed Dozer Line
- H Completed Hand Line
- R Road as Completed Line
- Fire Perimeter

- Forest Powerline Data**
- PubServCo_CLC411113
 - MtnPrksElectricInc

- Utilities**
- Power Lines
 - ⊕ Gas Line
 - Res. Structures
 - Structures Centroids
 - Structure Footprints
 - Zone Break

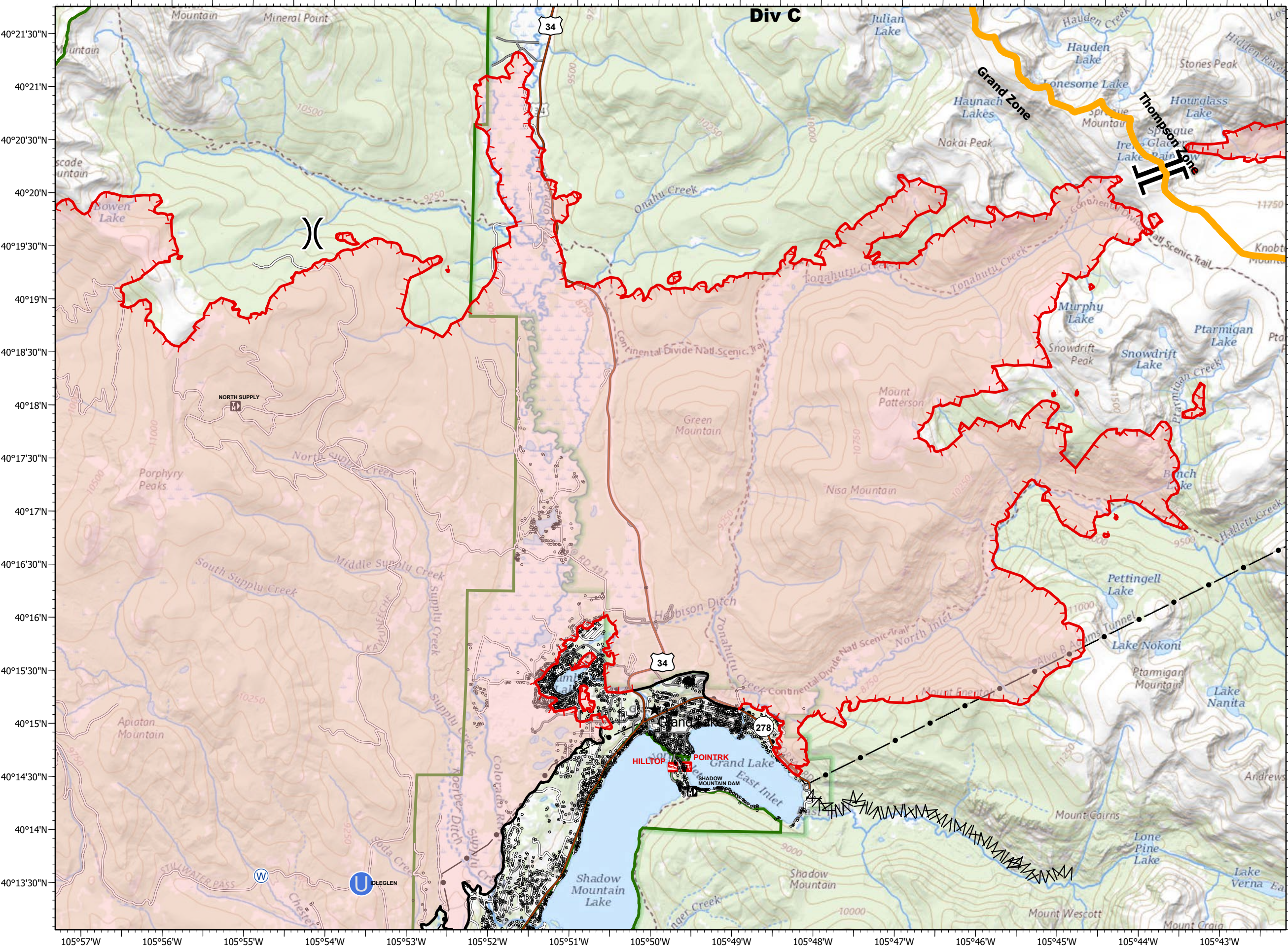
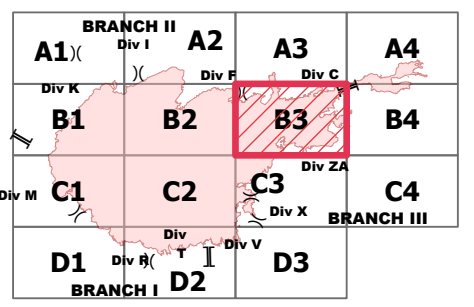
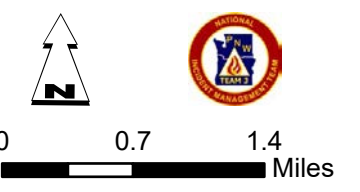
Fire Perimeter as of 10/27/20 1354 hrs
 193,774 Total Acres
 188,910 Grand Zone
 4,864 Thompson Zone



IAP - Page Name: B3
EAST TROUBLESOME CREEK - GRAND ZONE
WY-MRF-000408
10/31/2020

- Unimproved Landing Area
 - Water Source
 - Restricted Water Source
 - Division Break
 - Branch Break
 - Uncontrolled Fire Edge
 - Contained Line
 - Line Break Completed
 - Fire Perimeter
- Forest Powerline Data**
- PubServCo_CLC411113
 - MtnPrksElectricInc
- Utilities**
- Power Lines
 - Gas Line
 - Res. Structures
 - Structures Centroids
 - Structure Footprints
 - Zone Break

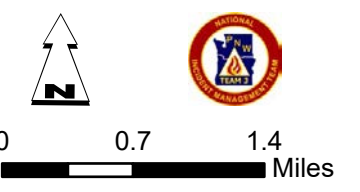
Fire Perimeter as of 10/27/20 1354 hrs
 193,774 Total Acres
 188,910 Grand Zone
 4,864 Thompson Zone



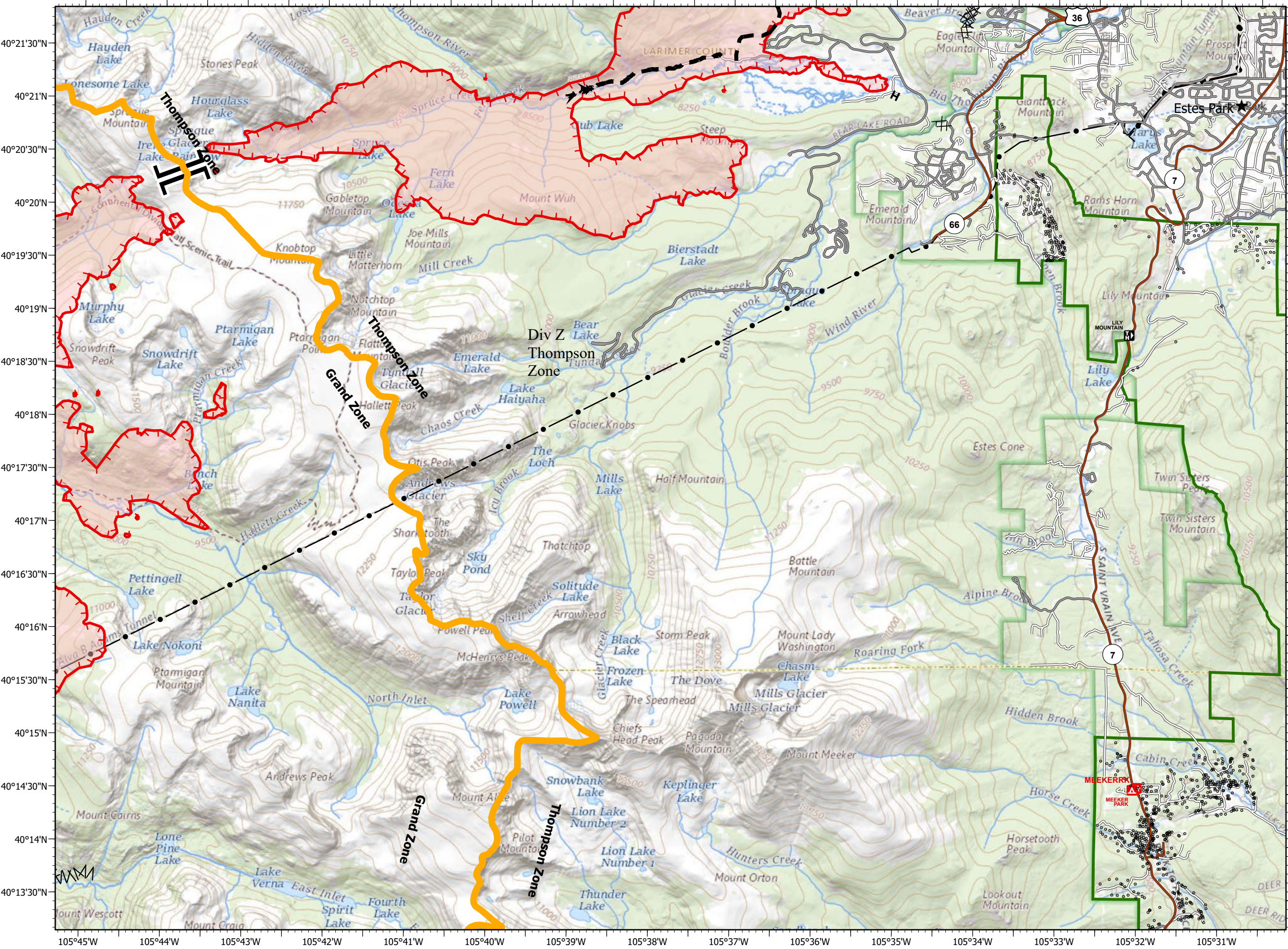
105°57'W 105°56'W 105°55'W 105°54'W 105°53'W 105°52'W 105°51'W 105°50'W 105°49'W 105°48'W 105°47'W 105°46'W 105°45'W 105°44'W 105°43'W

- Branch Break
 - Uncontrolled Fire Edge
 - Completed Dozer Line
 - Completed Hand Line
 - Line Break Completed
 - Planned Fire Line
 - Fire Perimeter
- Forest Powerline Data**
- PubServCo_CLC411113
 - MtnPrksElectricInc
- Utilities**
- Power Lines
 - Gas Line
 - Res. Structures
 - Structures Centroids
 - Structure Footprints
 - Zone Break

Fire Perimeter as of 10/27/20 1354 hrs
 193,774 Total Acres
 188,910 Grand Zone
 4,864 Thompson Zone

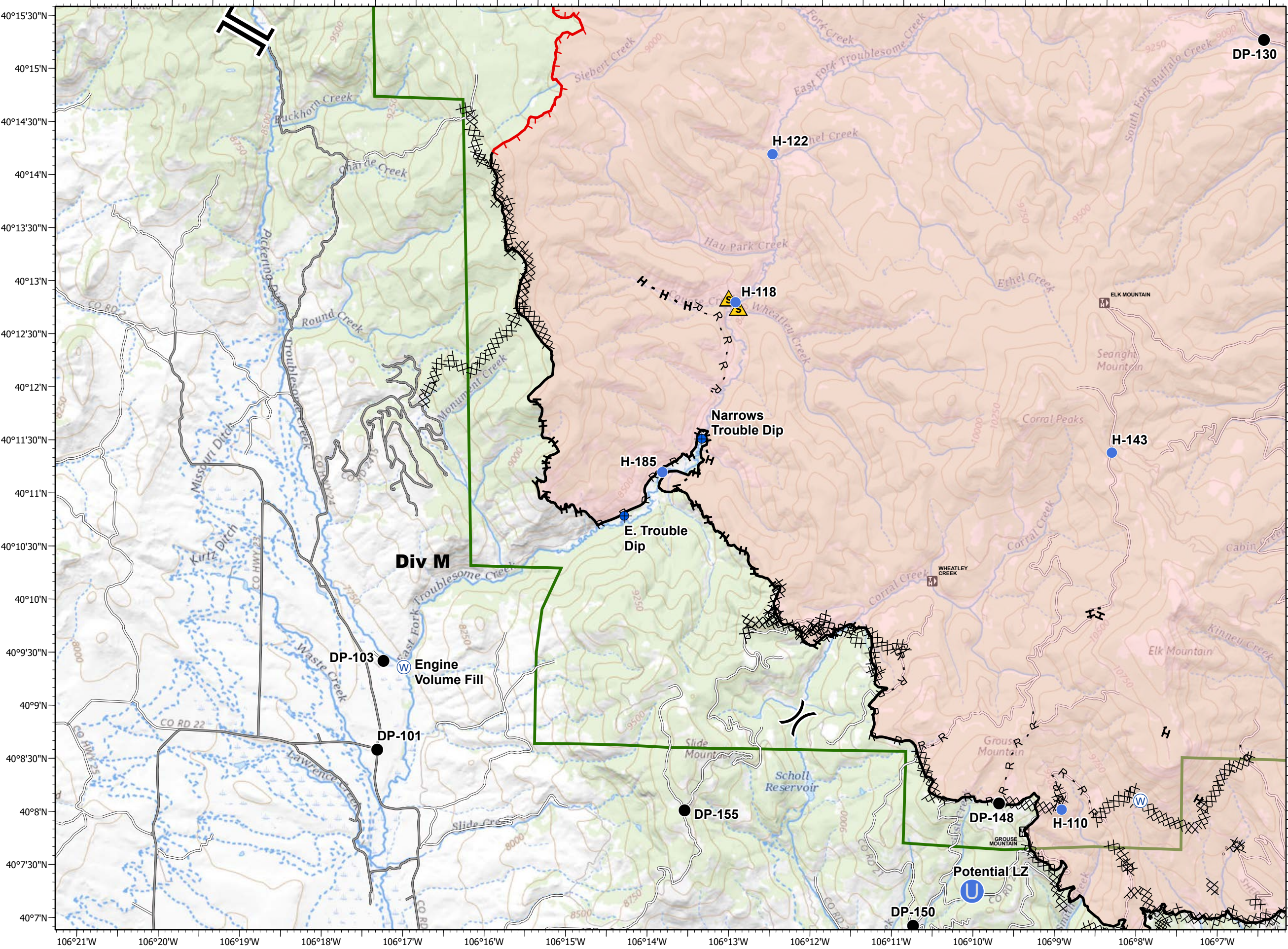
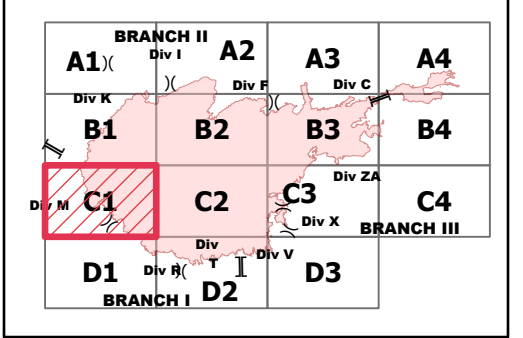
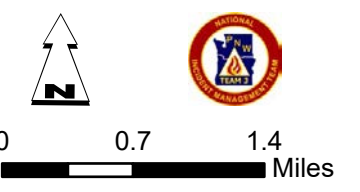


BRANCH II			
A1	A2	A3	A4
Div I	Div F	Div C	
Div K	B2	B3	B4
Div M	C2	C3	Div ZA
	Div X	Div V	BRANCH III
D1	D2	D3	
BRANCH I	Div T		



- Dip Site
- Drop Point
- Unimproved Landing Area
- Helispot
- Safety Zone
- Water Source
- Division Break
- Branch Break
- Uncontrolled Fire Edge
- Contained Line
- Completed Dozer Line
- Completed Hand Line
- Road as Completed Line
- Fire Perimeter
- Forest Powerline Data**
- PubServCo_CLC411113
- MtnPrksElectricInc
- Utilities**
- Power Lines
- Gas Line
- Res. Structures
- Structures Centroids
- Structure Footprints
- Zone Break











Fire Perimeter as of 10/27/20 1354 hrs
 193,774 Total Acres
 188,910 Grand Zone
 4,864 Thompson Zone











EAST TROUBLESOME CREEK - GRAND ZONE

WY-MRF-000408

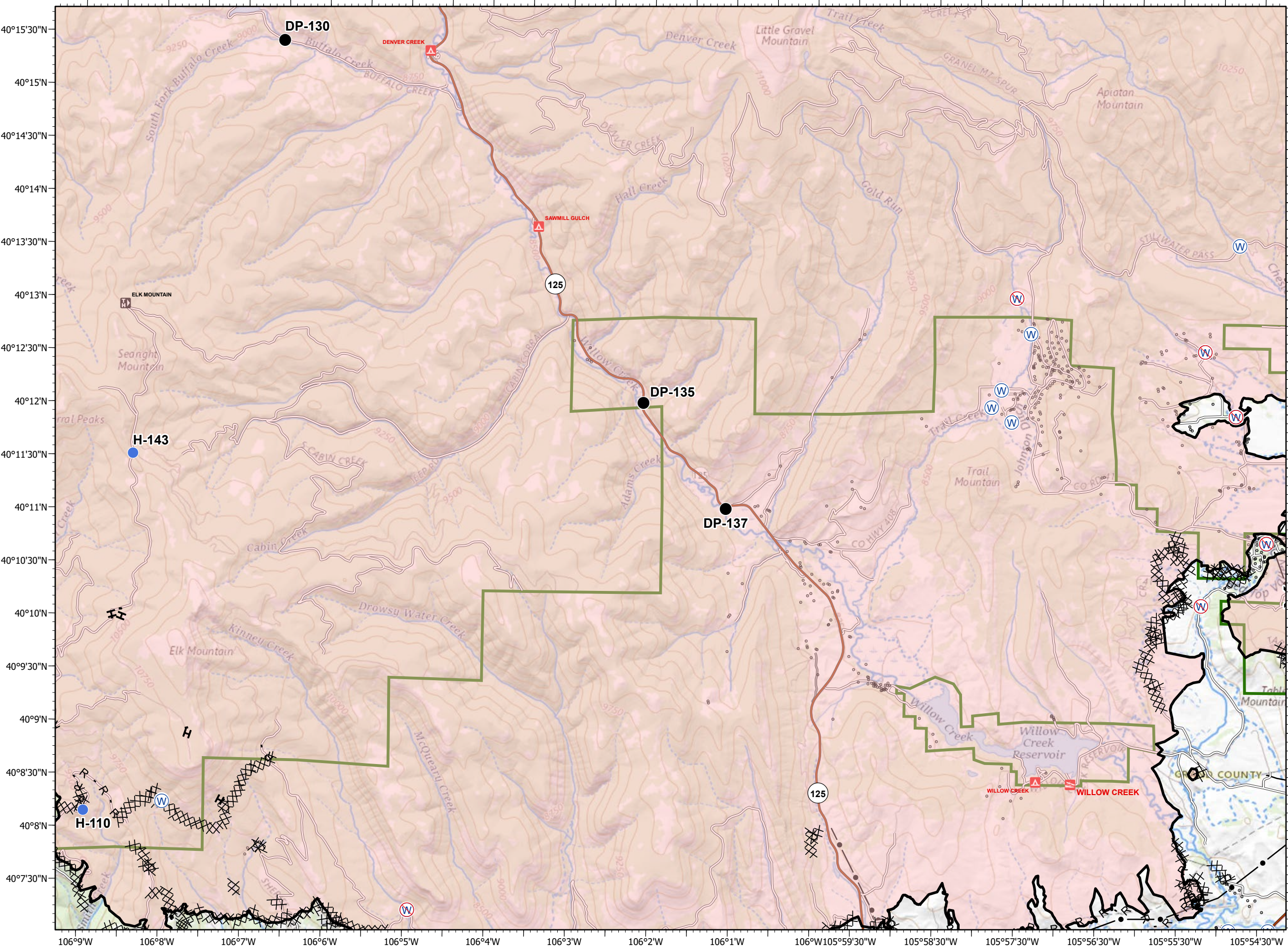
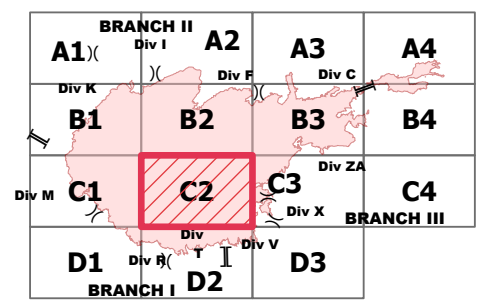
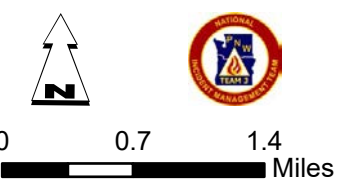
10/31/2020

-  Drop Point
-  Helispot
-  Water Source
-  Restricted Water Source
-  Division Break
-  Contained Line
-  Completed Dozer Line
-  Completed Hand Line
-  Road as Completed Line
-  Fire Perimeter

- Forest Powerline Data**
-  PubServCo_CLC411113
 -  MtnPrksElectricInc

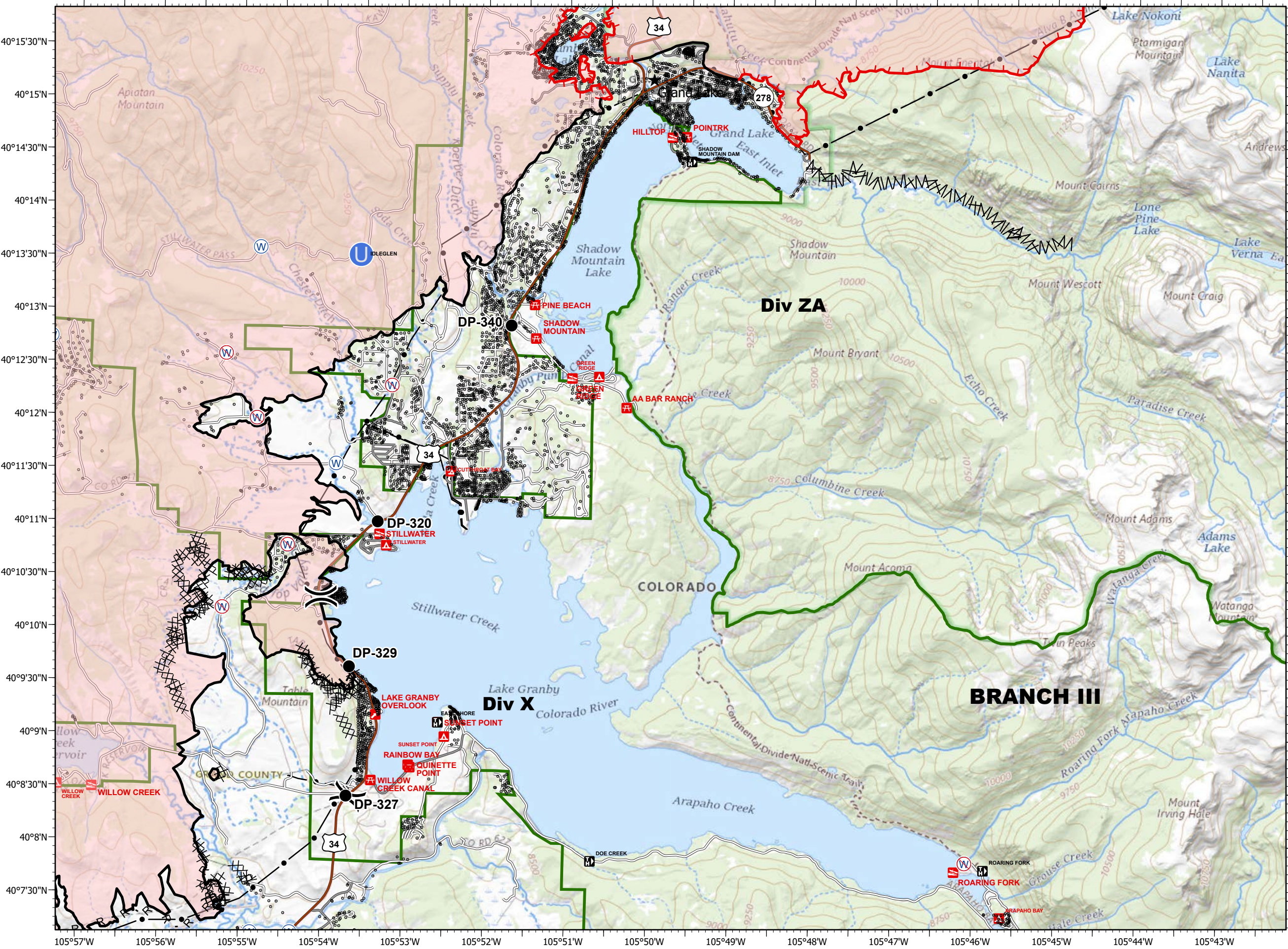
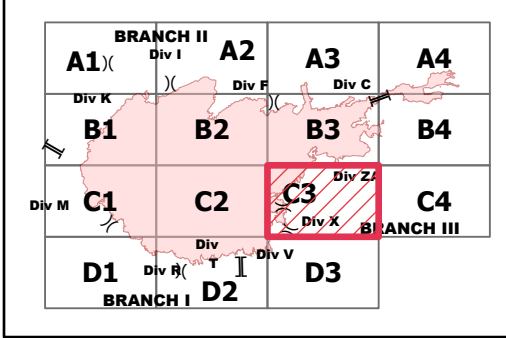
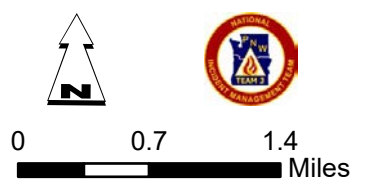
- Utilities**
-  Power Lines
 -  Gas Line
 -  Res. Structures
 -  Structures Centroids
 -  Structure Footprints
 -  Zone Break

Fire Perimeter as of 10/27/20 1354 hrs
 193,774 Total Acres
 188,910 Grand Zone
 4,864 Thompson Zone







- Drop Point
 - Unimproved Landing Area
 - W Water Source
 - W Restricted Water Source
 -) Division Break
 - Uncontrolled Fire Edge
 - Contained Line
 - Completed Dozer Line
 - H Completed Hand Line
 - R Road as Completed Line
 - Line Break Completed
 - Fire Perimeter
- Forest Powerline Data
- PubServCo_CLC411113
 - MtnPrksElectricInc
- Utilities
- Power Lines
 - Gas Line
 - Res. Structures
 - Structures Centroids
 - Structure Footprints
 - Zone Break

Fire Perimeter as of 10/27/20 1354 hrs
 193,774 Total Acres
 188,910 Grand Zone
 4,864 Thompson Zone


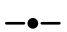


EAST TROUBLESOME CREEK - GRAND ZONE


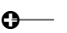




WY-MRF-000408
10/31/2020

-  Zone Break
-  Uncontrolled Fire Edge
-  Line Break Completed
-  Fire Perimeter

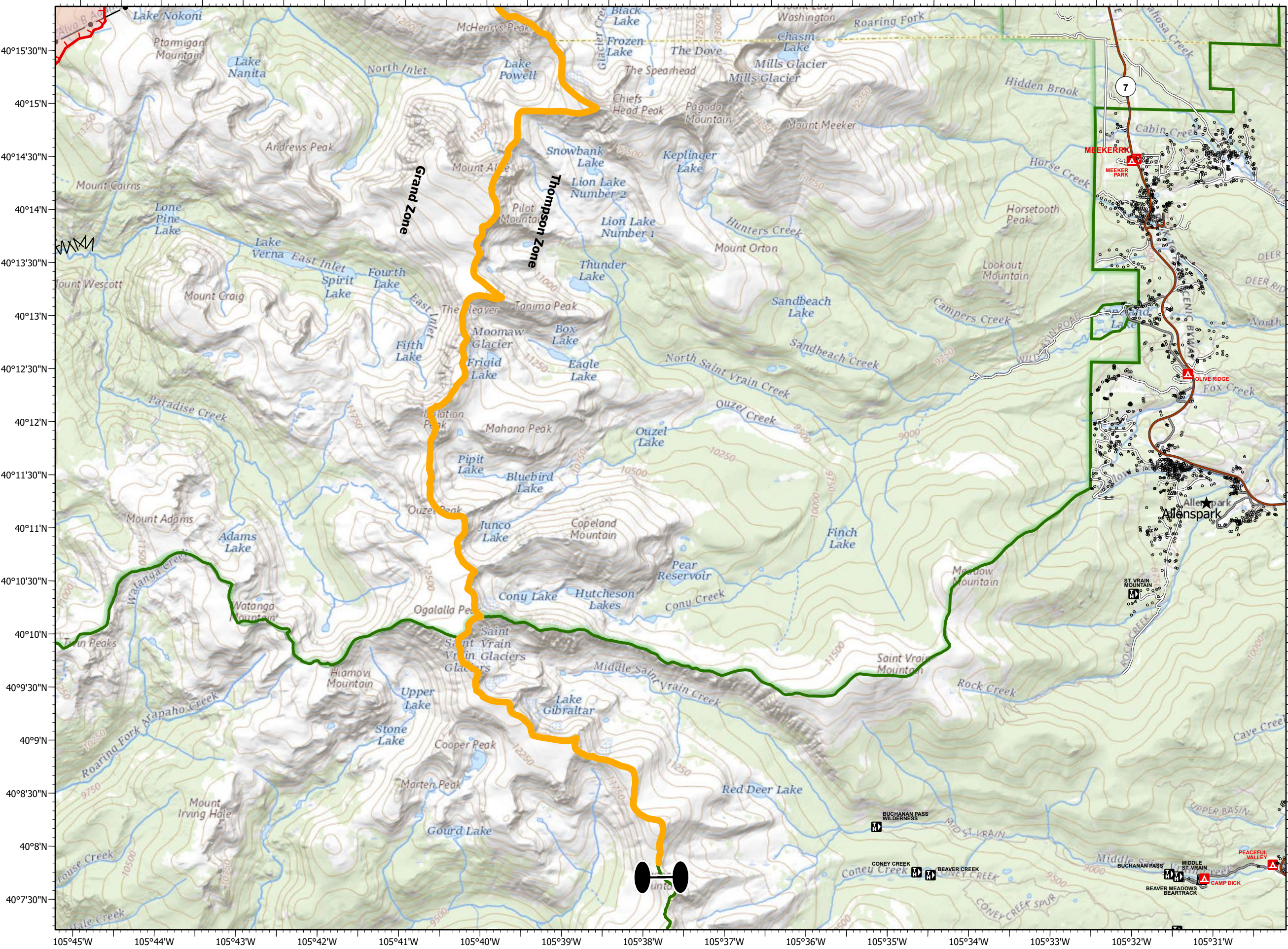
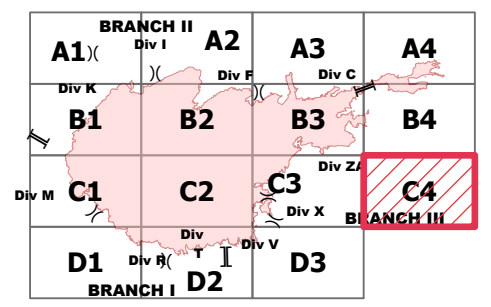
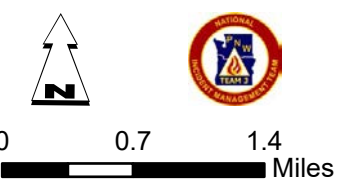
Forest Powerline Data

-  PubServCo_CLC411113
-  MtnPrksElectricInc

Utilities

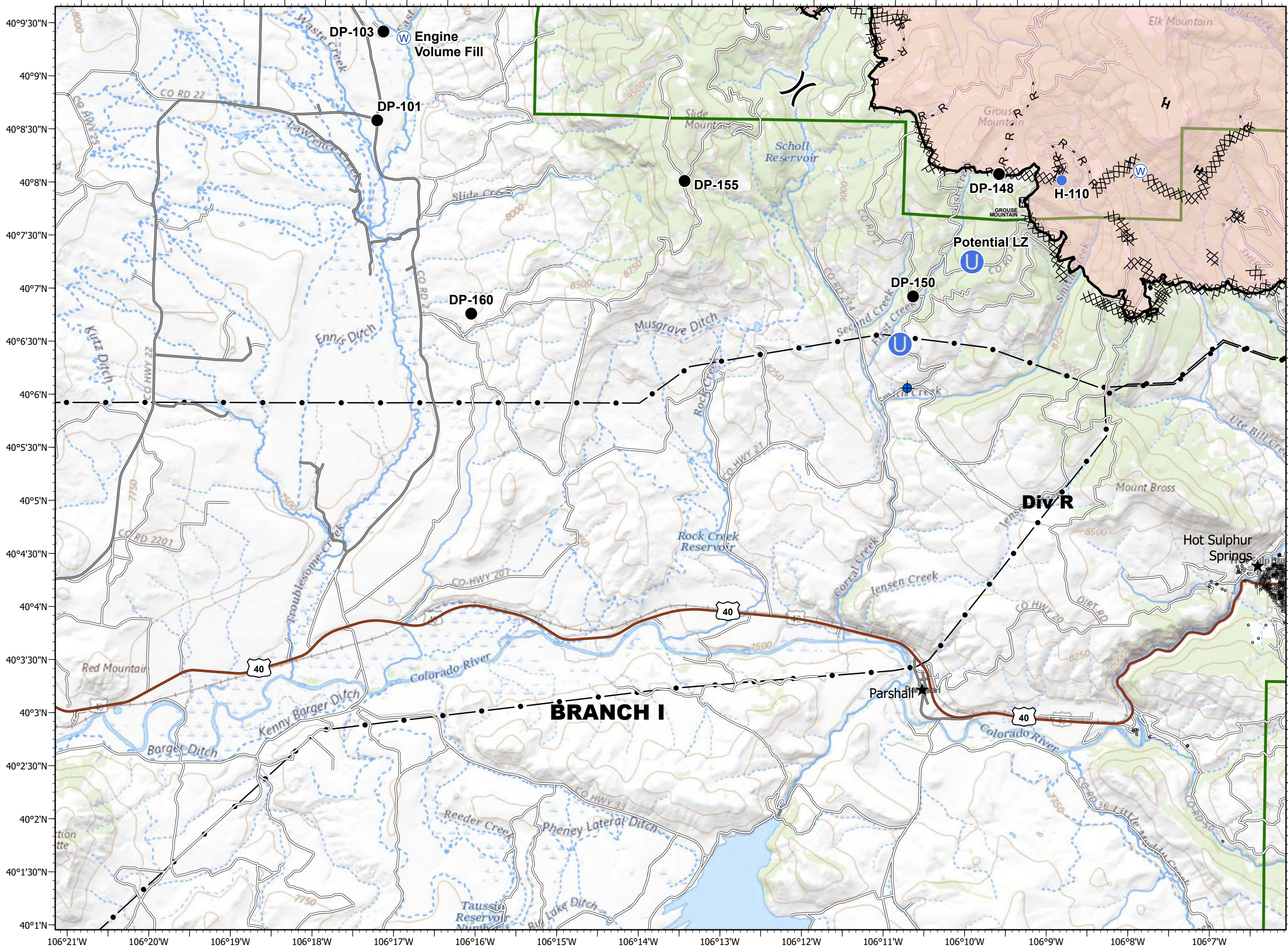
-  Power Lines
-  Gas Line
-  Res. Structures
-  Structures Centroids
-  Structure Footprints
-  Zone Break

Fire Perimeter as of 10/27/20 1354 hrs
 193,774 Total Acres
 188,910 Grand Zone
 4,864 Thompson Zone



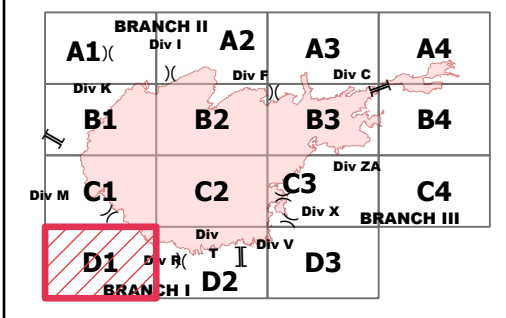
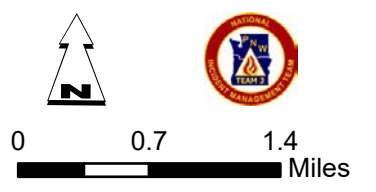
105°45'W 105°44'W 105°43'W 105°42'W 105°41'W 105°40'W 105°39'W 105°38'W 105°37'W 105°36'W 105°35'W 105°34'W 105°33'W 105°32'W 105°31'W

40°15'30"N
40°15'N
40°14'30"N
40°14'N
40°13'30"N
40°13'N
40°12'30"N
40°12'N
40°11'30"N
40°11'N
40°10'30"N
40°10'N
40°9'30"N
40°9'N
40°8'30"N
40°8'N
40°7'30"N



- Dip Site
 - Drop Point
 - Unimproved Landing Area
 - Helispot
 - Water Source
 - Division Break
 - Contained Line
 - Completed Dozer Line
 - Completed Hand Line
 - Road as Completed Line
 - Fire Perimeter
- Forest Powerline Data**
- PubServCo_CLC411113
 - MtnPrksElectricInc
- Utilities**
- Power Lines
 - Gas Line
 - Res. Structures
 - Structures Centroids
 - Structure Footprints
 - Zone Break

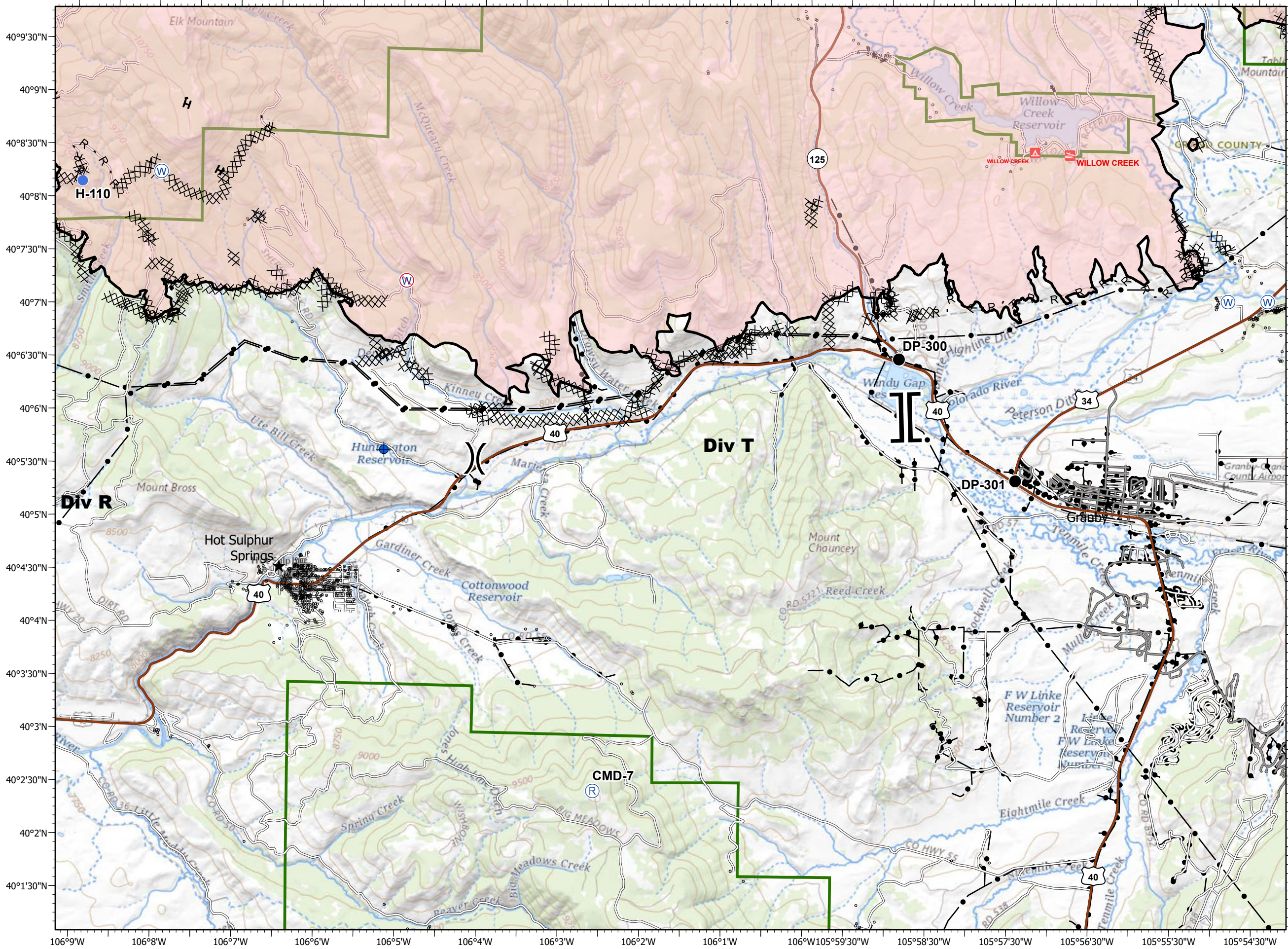
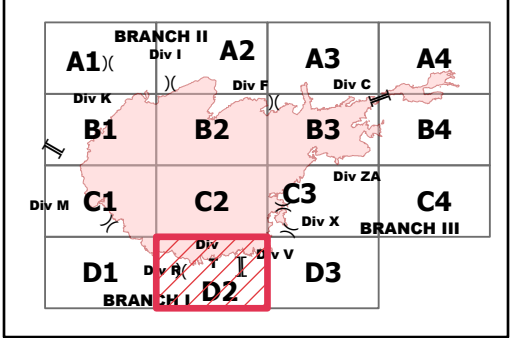
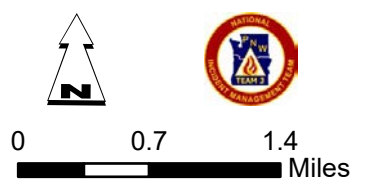
Fire Perimeter as of 10/27/20 1354 hrs
 193,774 Total Acres
 188,910 Grand Zone
 4,864 Thompson Zone



IAP - Page Name: D2
EAST TROUBLESOME CREEK - GRAND ZONE
WY-MRF-000408
10/31/2020

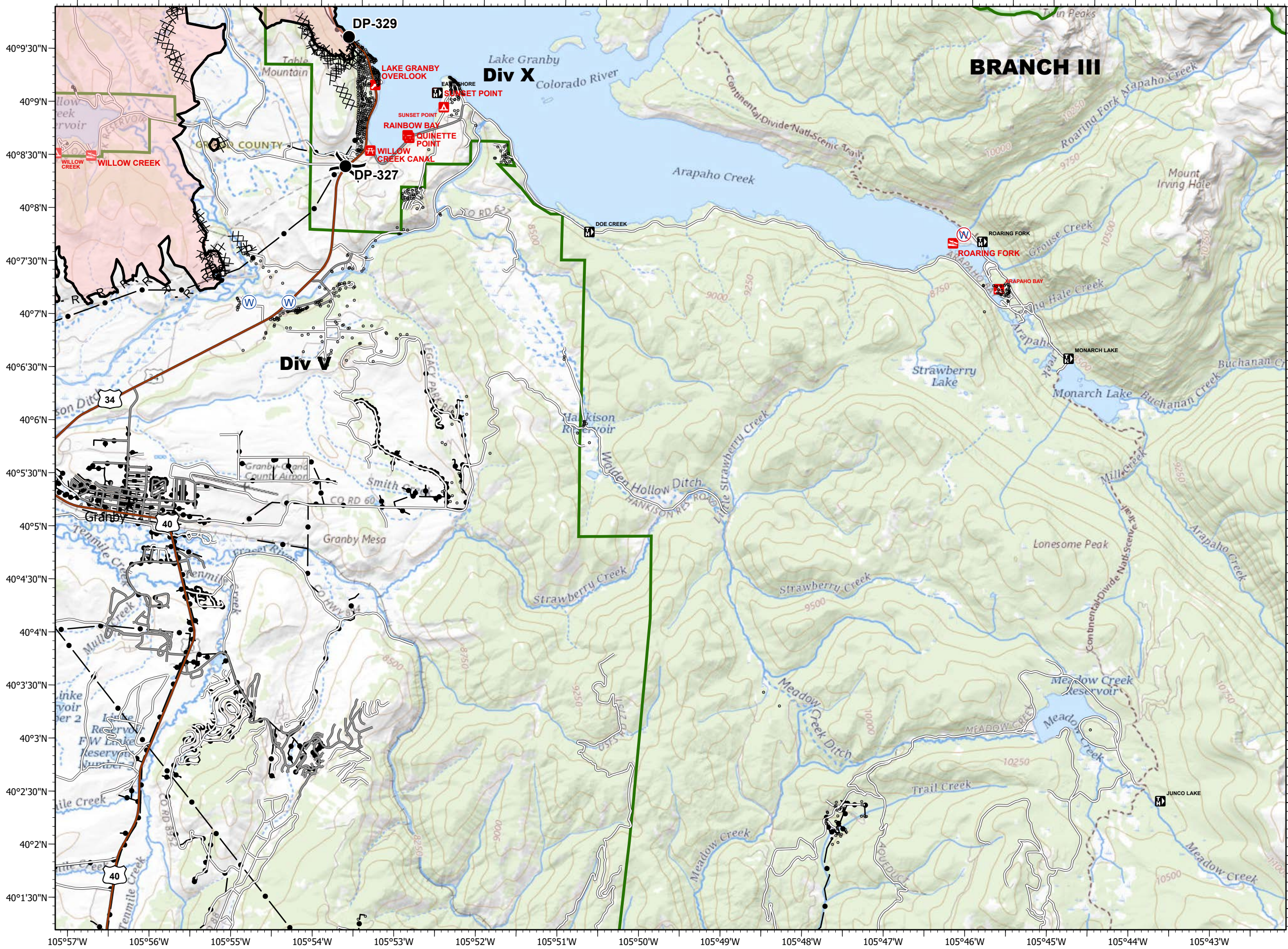
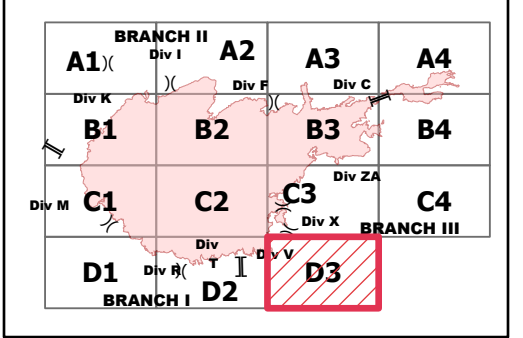
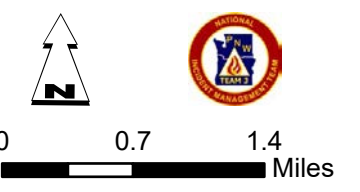
- Dip Site
- Drop Point
- Helispot
- Repeater
- Water Source
- Restricted Water Source
- Division Break
- Branch Break
- Contained Line
- Completed Dozer Line
- Completed Hand Line
- Fire Perimeter
- Forest Powerline Data**
- PubServCo_CLC411113
- MtnPrksElectricInc
- Utilities**
- Power Lines
- Gas Line
- Res. Structures
- Structures Centroids
- Structure Footprints
- Zone Break
- Road as Completed Line

Fire Perimeter as of 10/27/20 1354 hrs
 193,774 Total Acres
 188,910 Grand Zone
 4,864 Thompson Zone



- Drop Point
 - ⊕ Water Source
 - ⊕ Restricted Water Source
 -) Division Break
 - Contained Line
 - ⊗ Completed Dozer Line
 - H Completed Hand Line
 - R Road as Completed Line
 - Fire Perimeter
- Forest Powerline Data**
- PubServCo_CLC411113
 - MtnPrksElectricInc
- Utilities**
- Power Lines
 - ⊕ Gas Line
 - Res. Structures
 - Structures Centroids
 - Structure Footprints
 - Zone Break

Fire Perimeter as of 10/27/20 1354 hrs
 193,774 Total Acres
 188,910 Grand Zone
 4,864 Thompson Zone



40°9'30"N
 40°9'N
 40°8'30"N
 40°8'N
 40°7'30"N
 40°7'N
 40°6'30"N
 40°6'N
 40°5'30"N
 40°5'N
 40°4'30"N
 40°4'N
 40°3'30"N
 40°3'N
 40°2'30"N
 40°2'N
 40°1'30"N

105°57'W 105°56'W 105°55'W 105°54'W 105°53'W 105°52'W 105°51'W 105°50'W 105°49'W 105°48'W 105°47'W 105°46'W 105°45'W 105°44'W 105°43'W