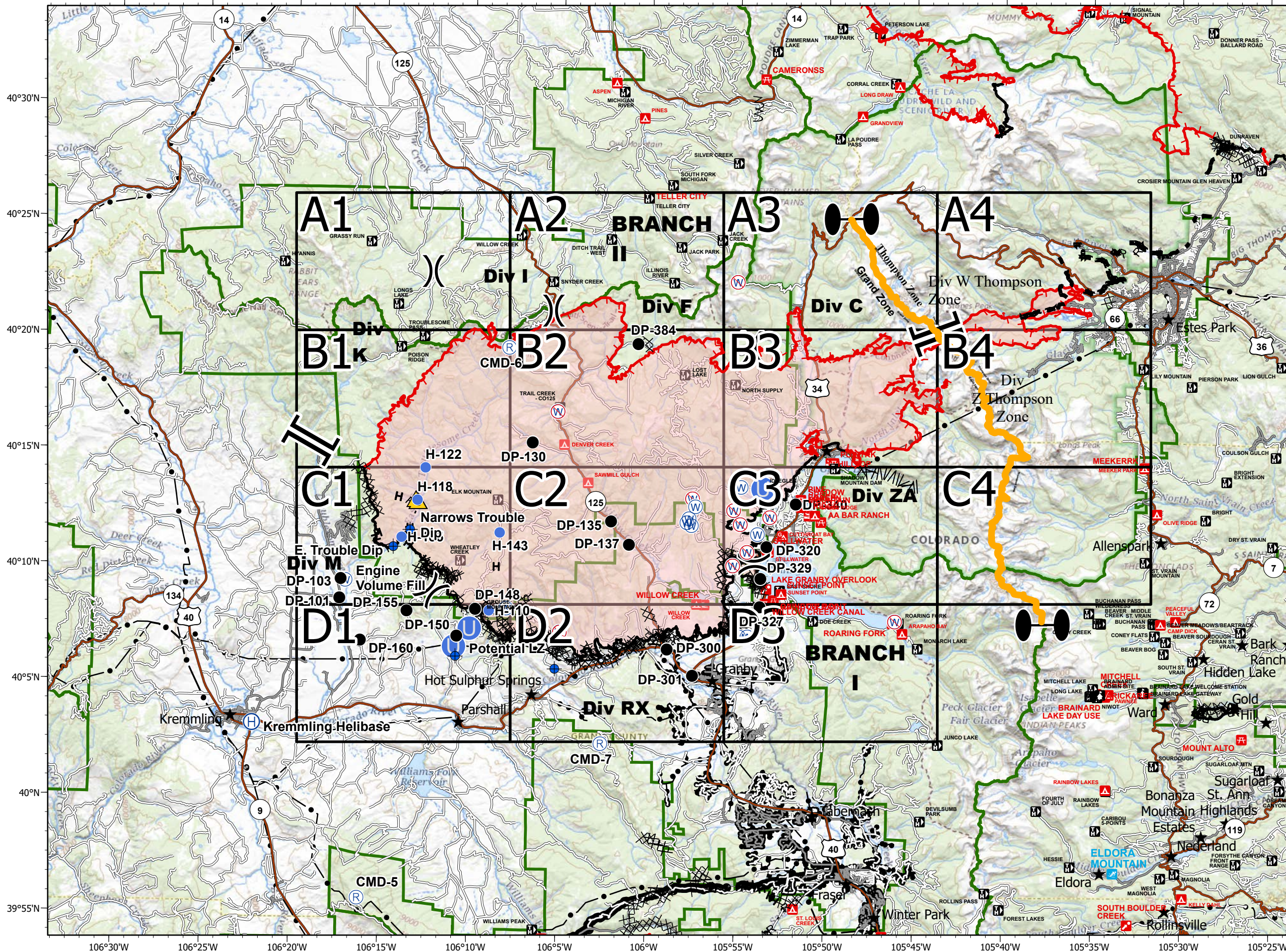
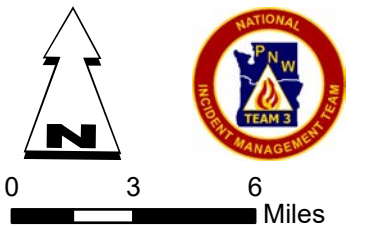


# EAST TROUBLESOME CREEK - GRAND ZONE WY-MRF-000408

Fire Perimeter as of 10/31/20 1356 hrs  
193,774 Total Acres  
188,910 Grand Zone  
4,864 Thompson Zone



- ◆ Dip Site
  - Drop Point
  - ⊕ Helibase
  - Unimproved Landing Area
  - Helispot
  - Ⓡ Repeater
  - ▲ Safety Zone
  - Ⓜ Water Source
  - Ⓜ Restricted Water Source
  - ⊖ Zone Break
  - ⊖ Division Break
  - ⊖ Branch Break
  - Uncontrolled Fire Edge
  - Contained Line
  - ⊗ Completed Dozer Line
  - H Completed Hand Line
  - R Road as Completed Line
  - ⊖ Line Break Completed
  - ⊖ Fire Break Planned or Incomplete
  - Planned Fire Line
  - Fire Perimeter
- SITE\_TYPE**
- Ⓜ INFO SITE/FEE STATION
  - ▲ CAMPGROUND
  - Ⓜ GROUP CAMPGROUND
  - Ⓜ TRAILHEAD
  - Ⓜ PICNIC SITE
  - Ⓜ GROUP PICNIC SITE
  - Ⓜ BOATING SITE
  - Ⓜ INTERPRETIVE SITE; INTERPRETIVE SITE (ADMIN)
  - Ⓜ SKI AREA ALPINE
- Forest Powerline Data**
- PubServCo\_CLC411113
  - MtnPrksElectricInc
- Utilities**
- Power Lines
  - ⊕ Gas Line
  - Zone Break



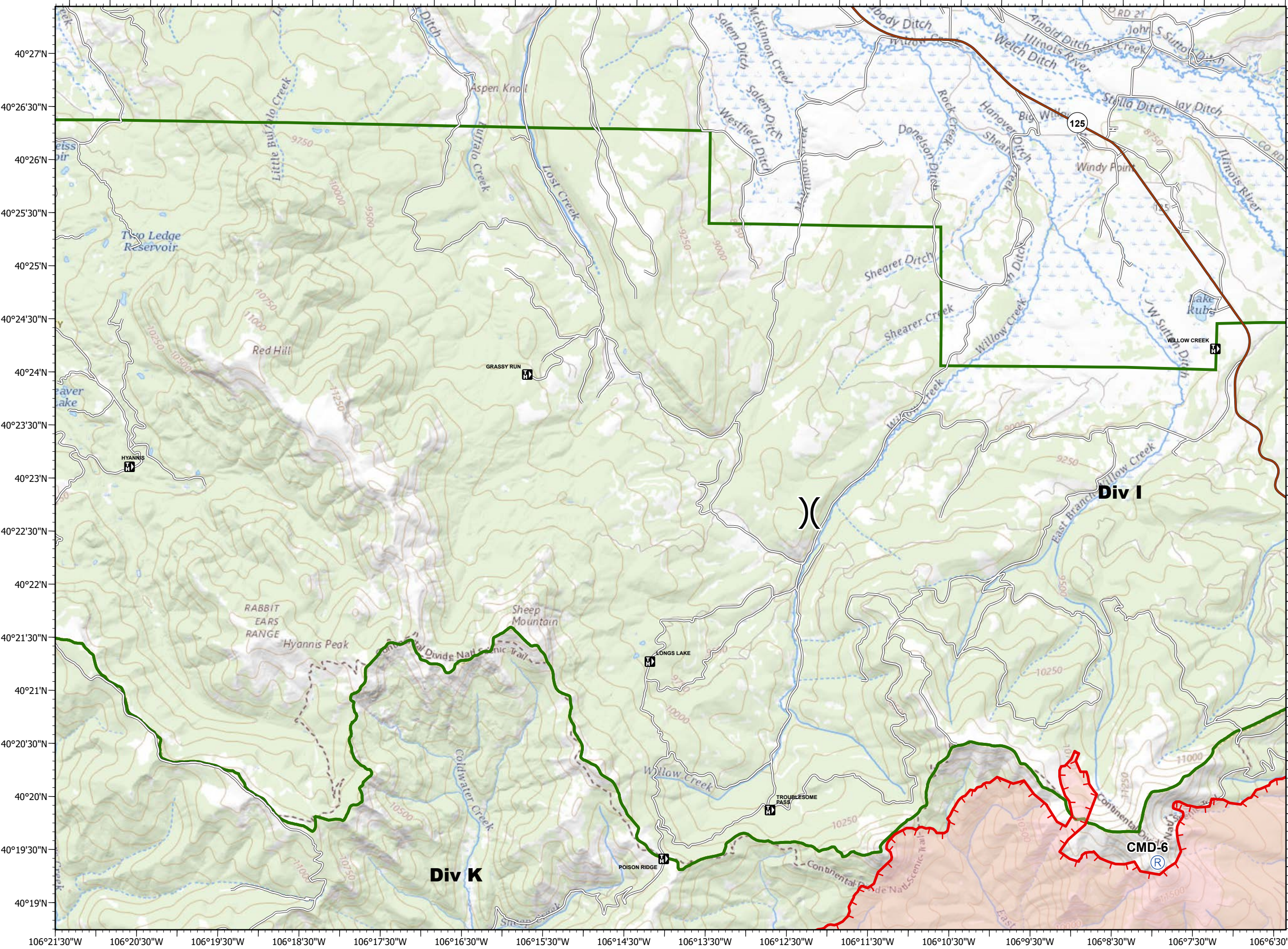
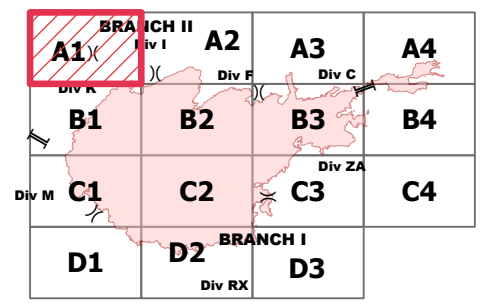
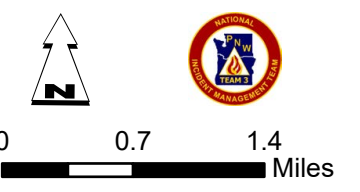


- Repeater
- Division Break
- Uncontrolled Fire Edge
- Fire Perimeter

- Forest Powerline Data**
- PubServCo\_CLC411113
  - MtnPrksElectricInc

- Utilities**
- Power Lines
  - Gas Line
  - Res. Structures
  - Structures Centroids
  - Structure Footprints
  - Zone Break

Fire Perimeter as of 10/31/20 1356 hrs  
 193,774 Total Acres  
 188,910 Grand Zone  
 4,864 Thompson Zone

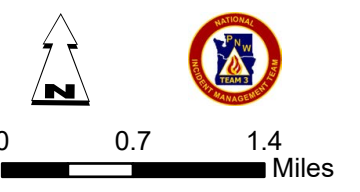


106°21'30"W 106°20'30"W 106°19'30"W 106°18'30"W 106°17'30"W 106°16'30"W 106°15'30"W 106°14'30"W 106°13'30"W 106°12'30"W 106°11'30"W 106°10'30"W 106°9'30"W 106°8'30"W 106°7'30"W 106°6'30"W

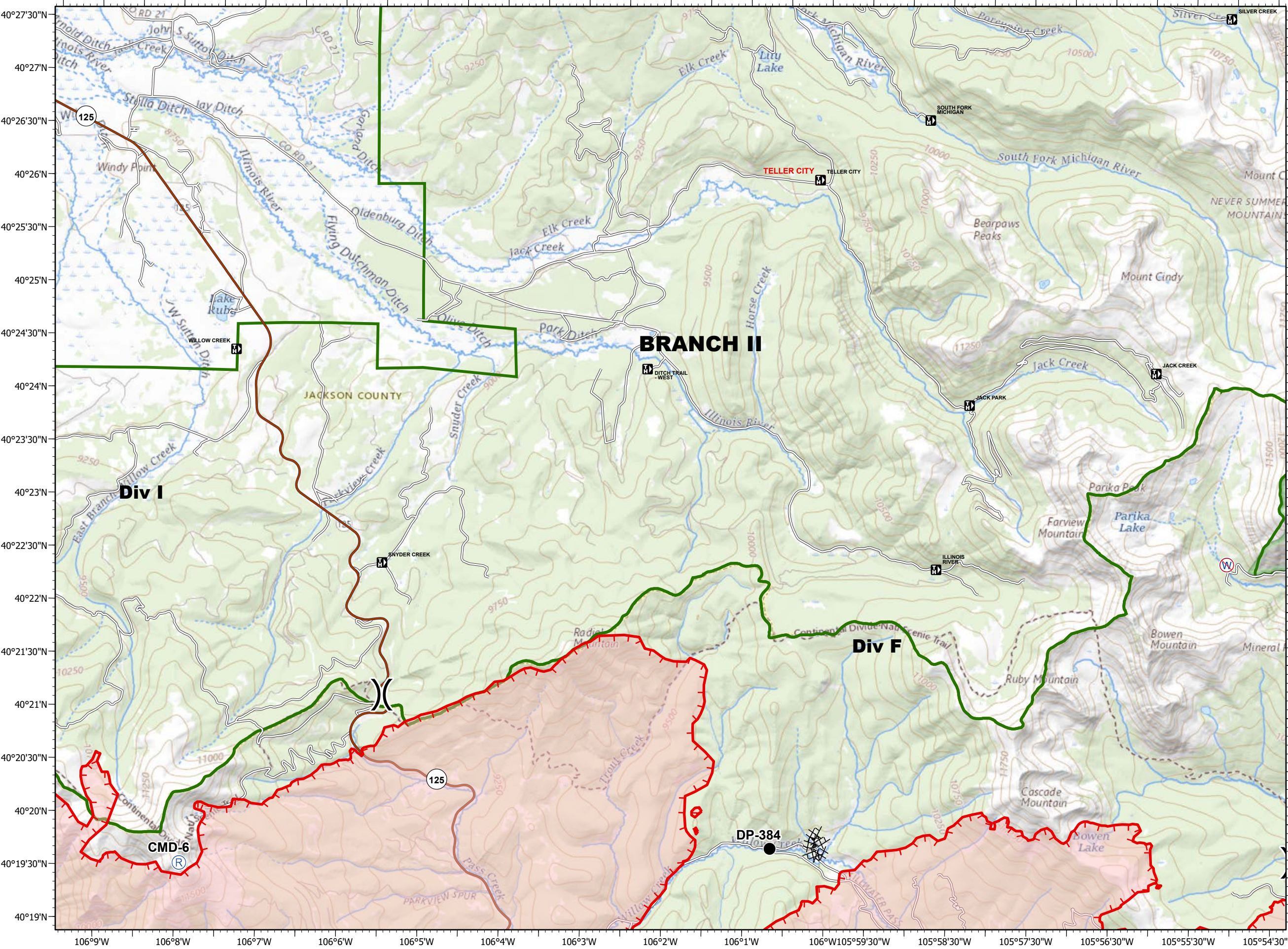


- Drop Point
  - Ⓡ Repeater
  - Ⓡ Restricted Water Source
  - ) ( Division Break
  - Uncontrolled Fire Edge
  - XXXX Completed Dozer Line
  - Fire Perimeter
- Forest Powerline Data**
- PubServCo\_CLC411113
  - MtnPrksElectricInc
- Utilities**
- Power Lines
  - ⊕ Gas Line
  - Res. Structures
  - Structures Centroids
  - Structure Footprints
  - Zone Break

Fire Perimeter as of 10/31/20 1356 hrs  
 193,774 Total Acres  
 188,910 Grand Zone  
 4,864 Thompson Zone





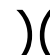





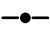





	BRANCH II			
Div K	A1	A2	A3	A4
Div M	B1	B2	B3	B4
	C1	C2	C3	C4
	D1	D2	D3	
		BRANCH I		
		Div RX		



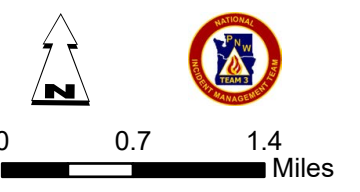
40°27'30"N  
40°27'N  
40°26'30"N  
40°26'N  
40°25'30"N  
40°25'N  
40°24'30"N  
40°24'N  
40°23'30"N  
40°23'N  
40°22'30"N  
40°22'N  
40°21'30"N  
40°21'N  
40°20'30"N  
40°20'N  
40°19'30"N  
40°19'N

106°9'W 106°8'W 106°7'W 106°6'W 106°5'W 106°4'W 106°3'W 106°2'W 106°1'W 106°W 105°59'30"W 105°58'30"W 105°57'30"W 105°56'30"W 105°55'30"W 105°54'30"W

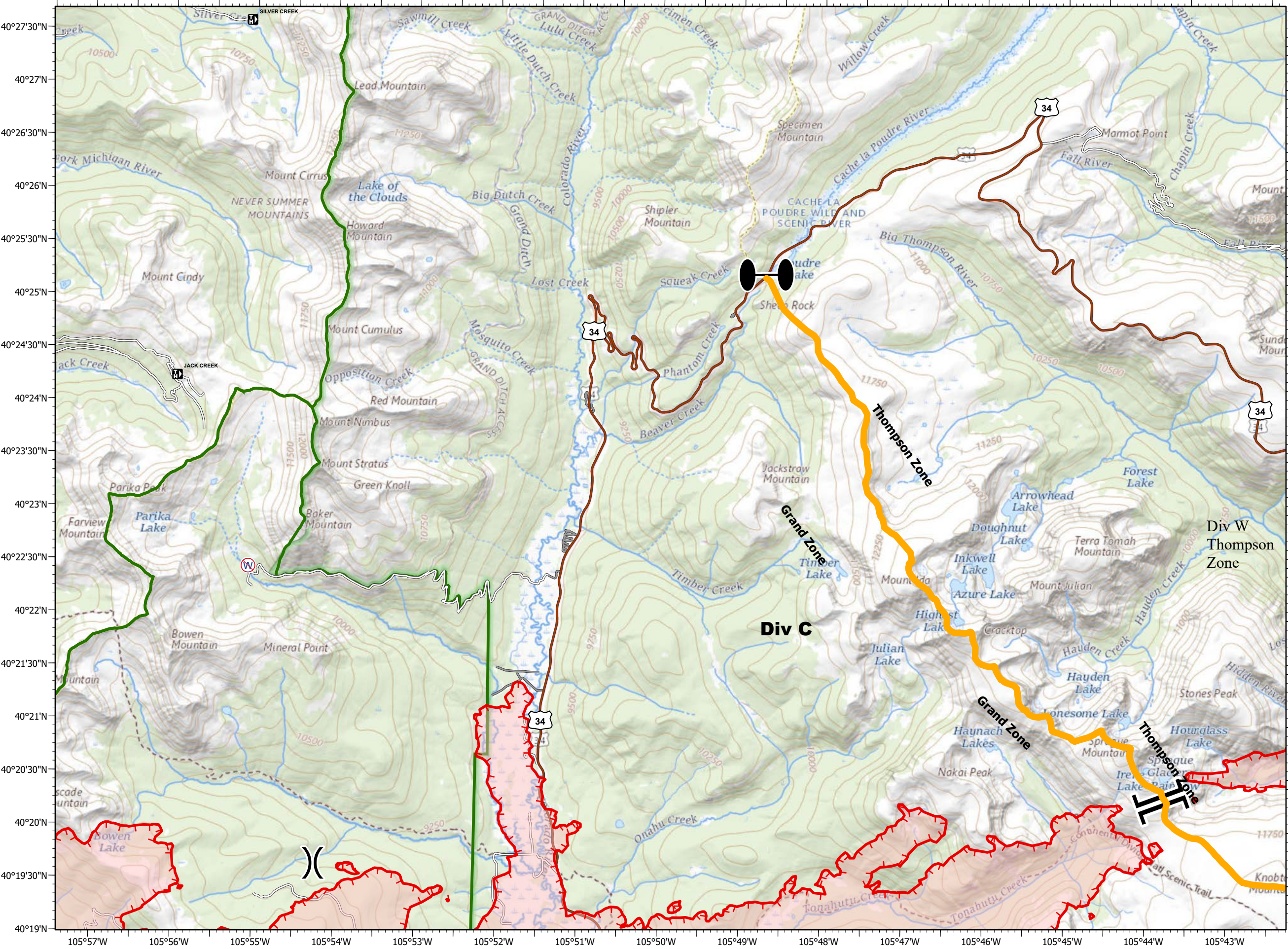


-  Restricted Water Source
-  Zone Break
-  Division Break
-  Branch Break
-  Uncontrolled Fire Edge
-  Fire Perimeter
- Forest Powerline Data**
-  PubServCo\_CLC411113
-  MtnPrksElectricInc
- Utilities**
-  Power Lines
-  Gas Line
-  Res. Structures
-  Structures Centroids
-  Structure Footprints
-  Zone Break

Fire Perimeter as of 10/31/20 1356 hrs  
 193,774 Total Acres  
 188,910 Grand Zone  
 4,864 Thompson Zone



BRANCH II		BRANCH I	
Div I	Div I	Div C	Div ZA
A1	A2	A3	A4
Div K	Div I	Div C	Div ZA
B1	B2	B3	B4
Div M	Div I	Div C	Div ZA
C1	C2	C3	C4
D1	D2	D3	
BRANCH I		BRANCH I	
Div RX		Div RX	



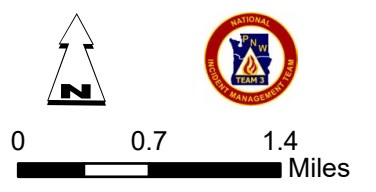


- Branch Break
- Uncontrolled Fire Edge
- Completed Dozer Line
- Completed Hand Line
- Road as Completed Line
- Planned Fire Line
- Fire Perimeter

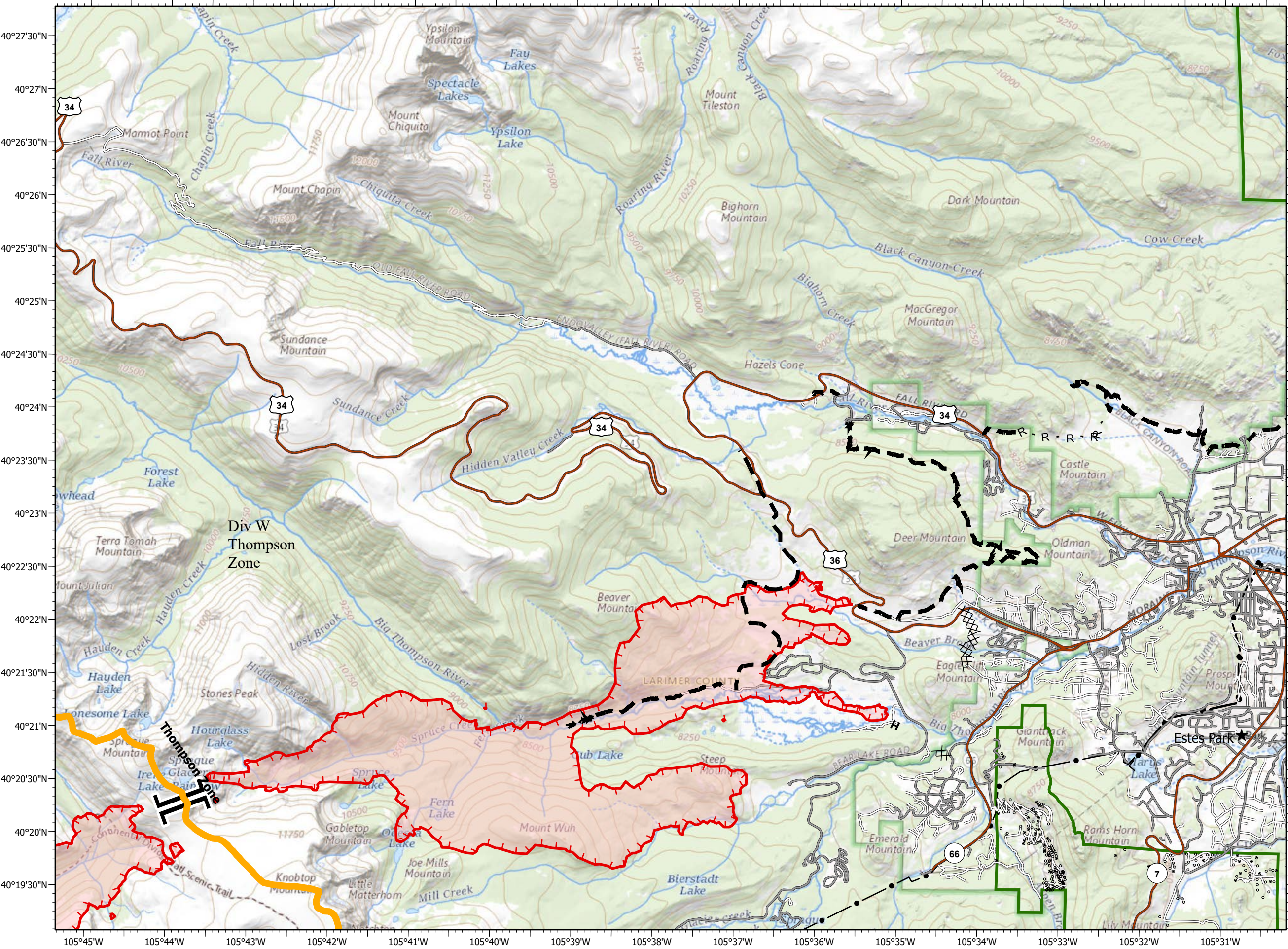
- Forest Powerline Data**
- PubServCo\_CLC411113
  - MtnPrksElectricInc

- Utilities**
- Power Lines
  - Gas Line
  - Res. Structures
  - Structures Centroids
  - Structure Footprints
  - Zone Break

Fire Perimeter as of 10/31/20 1356 hrs  
 193,774 Total Acres  
 188,910 Grand Zone  
 4,864 Thompson Zone



BRANCH II		BRANCH I	
A1 Div I	A2 Div F	A3 Div C	A4
B1 Div K	B2	B3 Div ZA	B4
C1 Div M	C2	C3	C4
D1	D2 Div RX	D3	



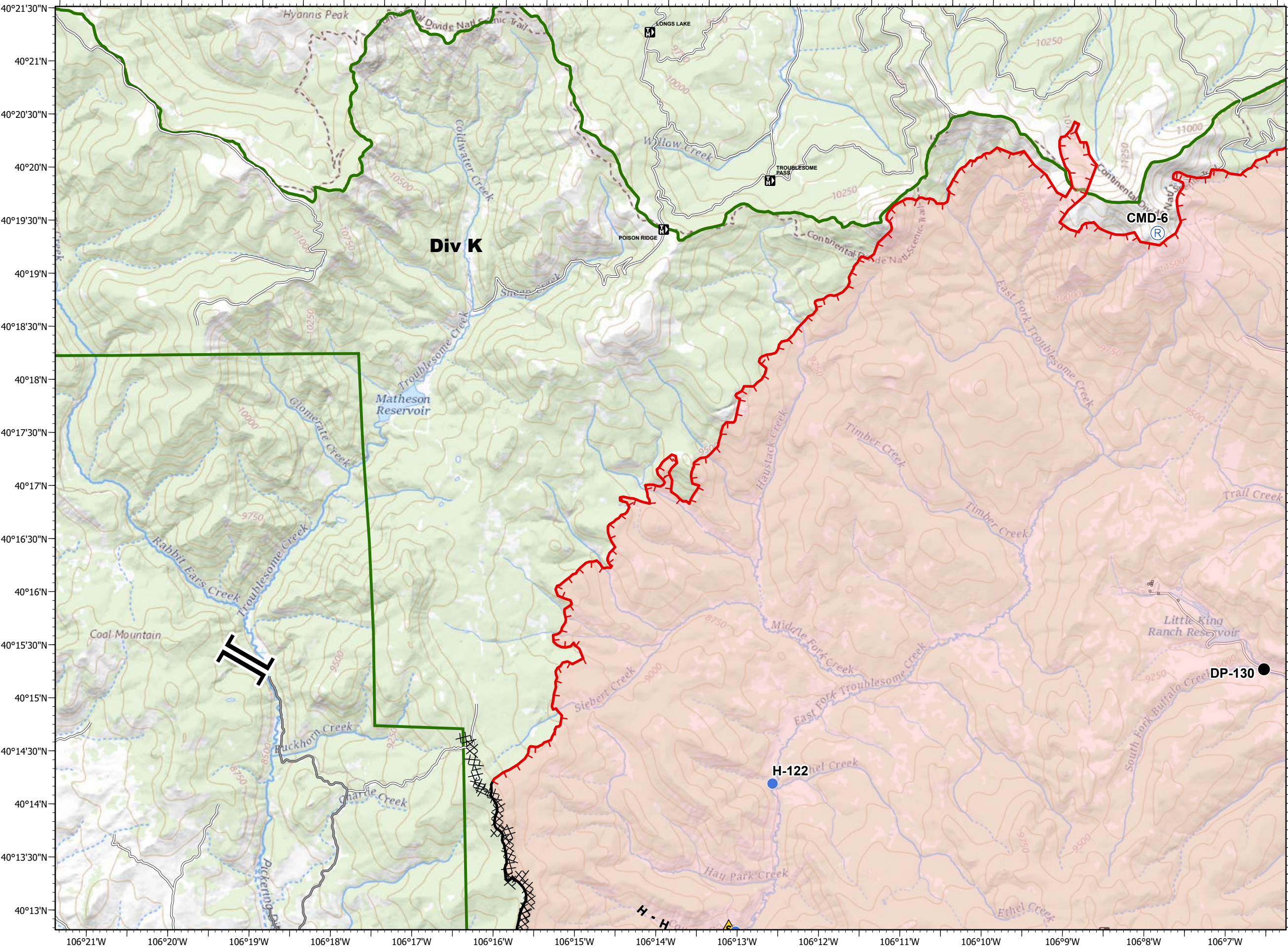
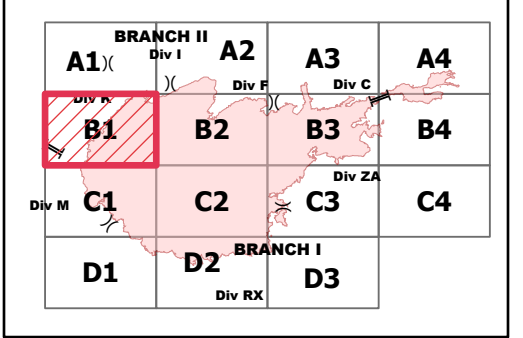
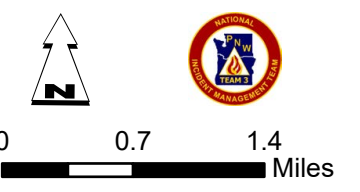


- Drop Point
- Helispot
- Ⓡ Repeater
- ▲ Safety Zone
- ]] Branch Break
- Uncontrolled Fire Edge
- Contained Line
- ⊗ Completed Dozer Line
- H Completed Hand Line
- R Road as Completed Line
- Fire Perimeter

- Forest Powerline Data**
- PubServCo\_CLC411113
  - MtnPrksElectricInc

- Utilities**
- Power Lines
  - ⊕ Gas Line
  - Res. Structures
  - Structures Centroids
  - Structure Footprints
  - Zone Break

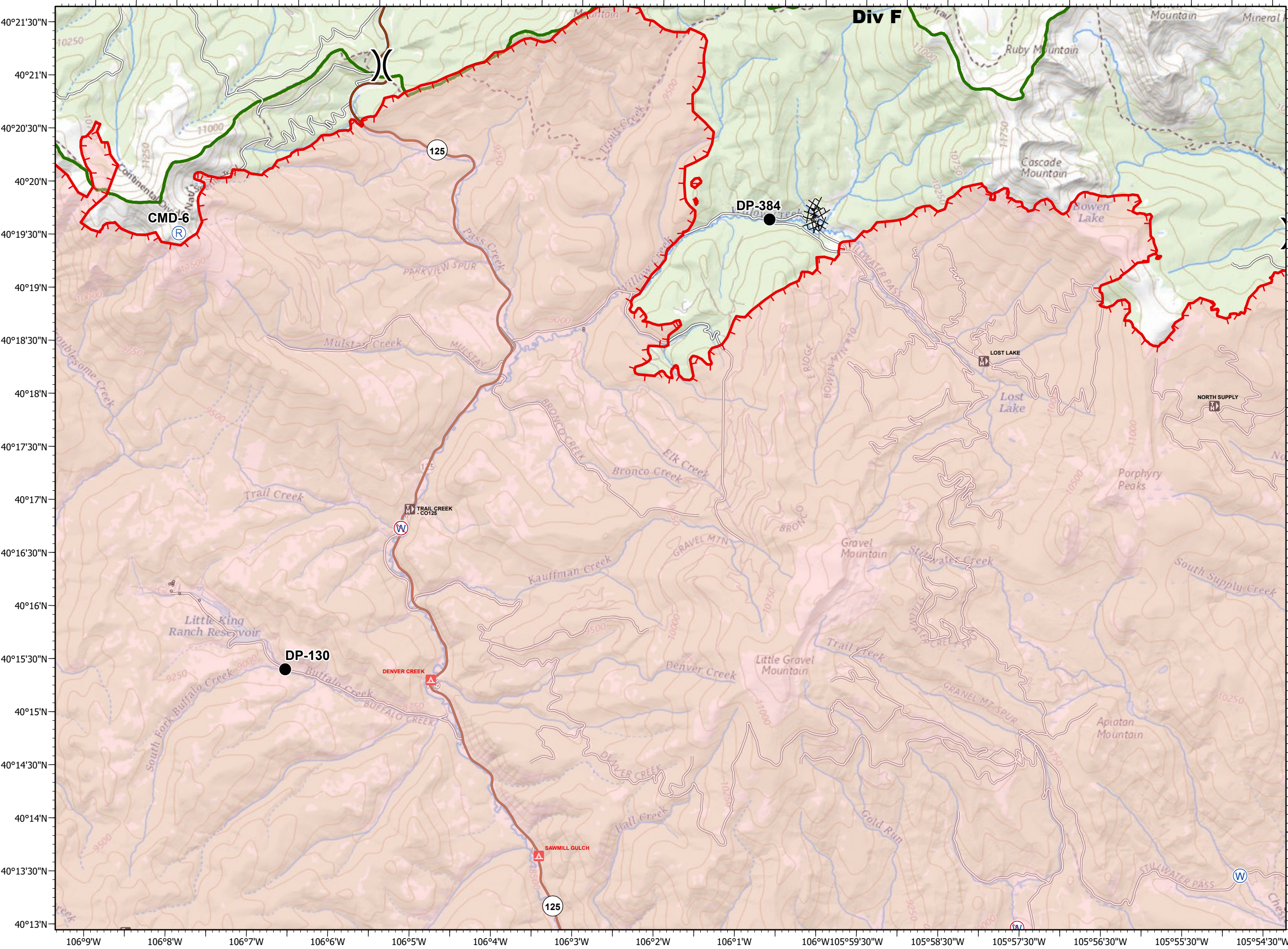
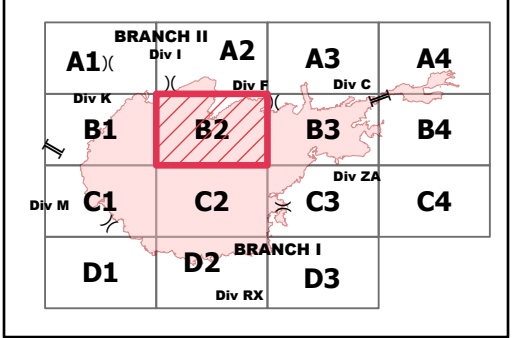
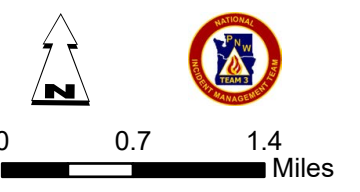
Fire Perimeter as of 10/31/20 1356 hrs  
 193,774 Total Acres  
 188,910 Grand Zone  
 4,864 Thompson Zone





- Drop Point
  - Ⓡ Repeater
  - Ⓜ Water Source
  - Ⓜ Restricted Water Source
  - ) ( Division Break
  - Uncontrolled Fire Edge
  - ⊗ Completed Dozer Line
  - Fire Perimeter
- Forest Powerline Data**
- PubServCo\_CLC411113
  - MtnPrksElectricInc
- Utilities**
- Power Lines
  - ⊕ Gas Line
  - Res. Structures
  - Structures Centroids
  - Structure Footprints
  - Zone Break

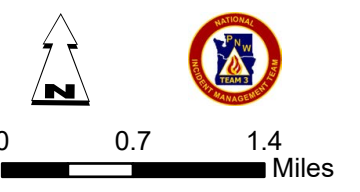
Fire Perimeter as of 10/31/20 1356 hrs  
 193,774 Total Acres  
 188,910 Grand Zone  
 4,864 Thompson Zone



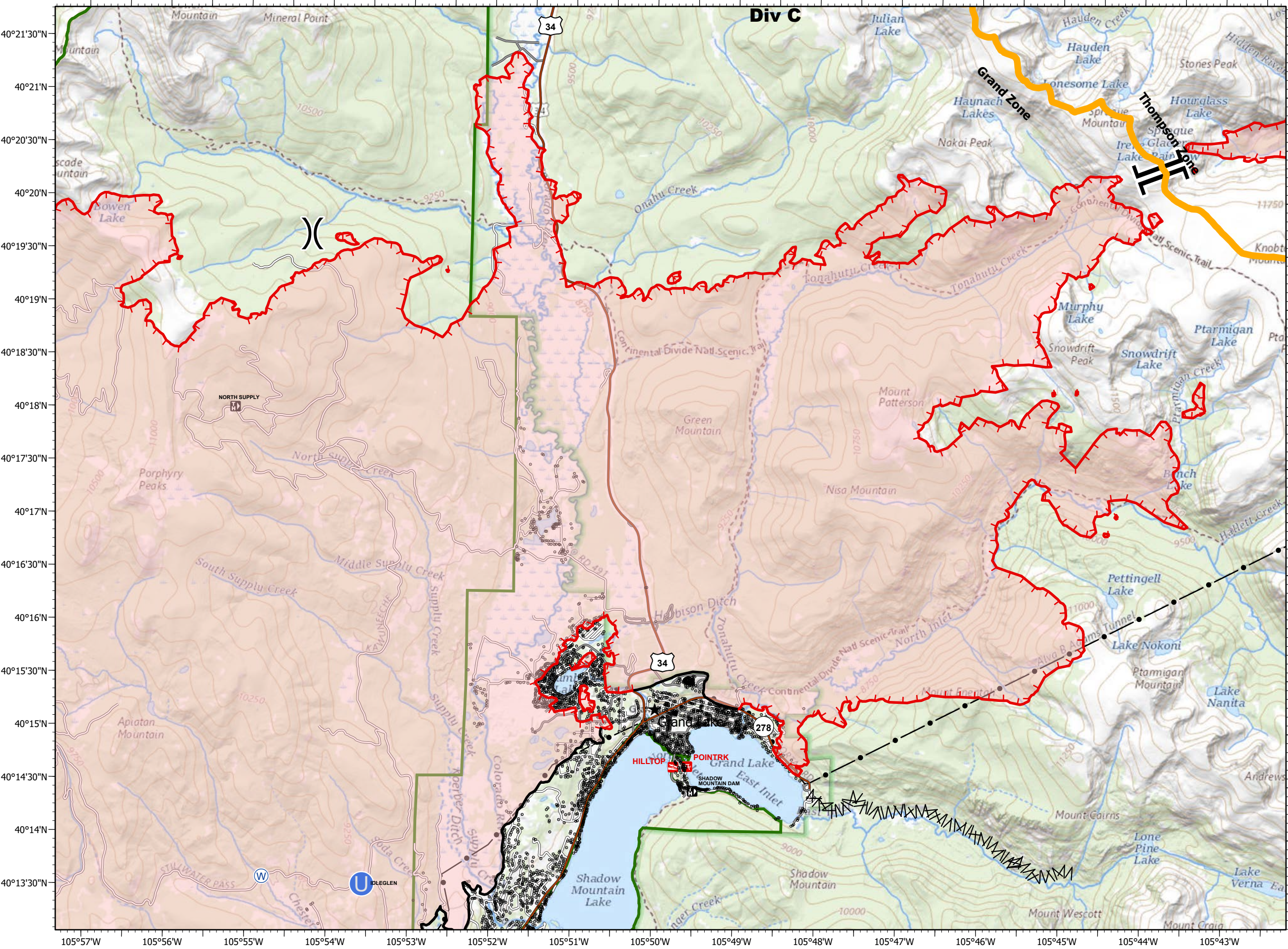


- Unimproved Landing Area
  - Water Source
  - Restricted Water Source
  - Division Break
  - Branch Break
  - Uncontrolled Fire Edge
  - Contained Line
  - Line Break Completed
  - Fire Perimeter
- Forest Powerline Data**
- PubServCo\_CLC411113
  - MtnPrksElectricInc
- Utilities**
- Power Lines
  - Gas Line
  - Res. Structures
  - Structures Centroids
  - Structure Footprints
  - Zone Break

Fire Perimeter as of 10/31/20 1356 hrs  
 193,774 Total Acres  
 188,910 Grand Zone  
 4,864 Thompson Zone



	BRANCH II			
	A1	A2	A3	A4
Div K	B1	B2	B3	B4
Div M	C1	C2	C3	C4
		BRANCH I		
	D1	D2	D3	





# EAST TROUBLESOME CREEK - GRAND ZONE

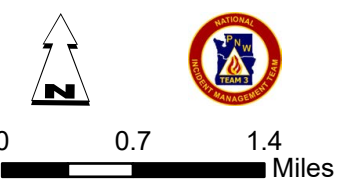
WY-MRF-000408  
11/01/2020

- Branch Break
- Uncontrolled Fire Edge
- Completed Dozer Line
- Completed Hand Line
- Line Break Completed
- Planned Fire Line
- Fire Perimeter

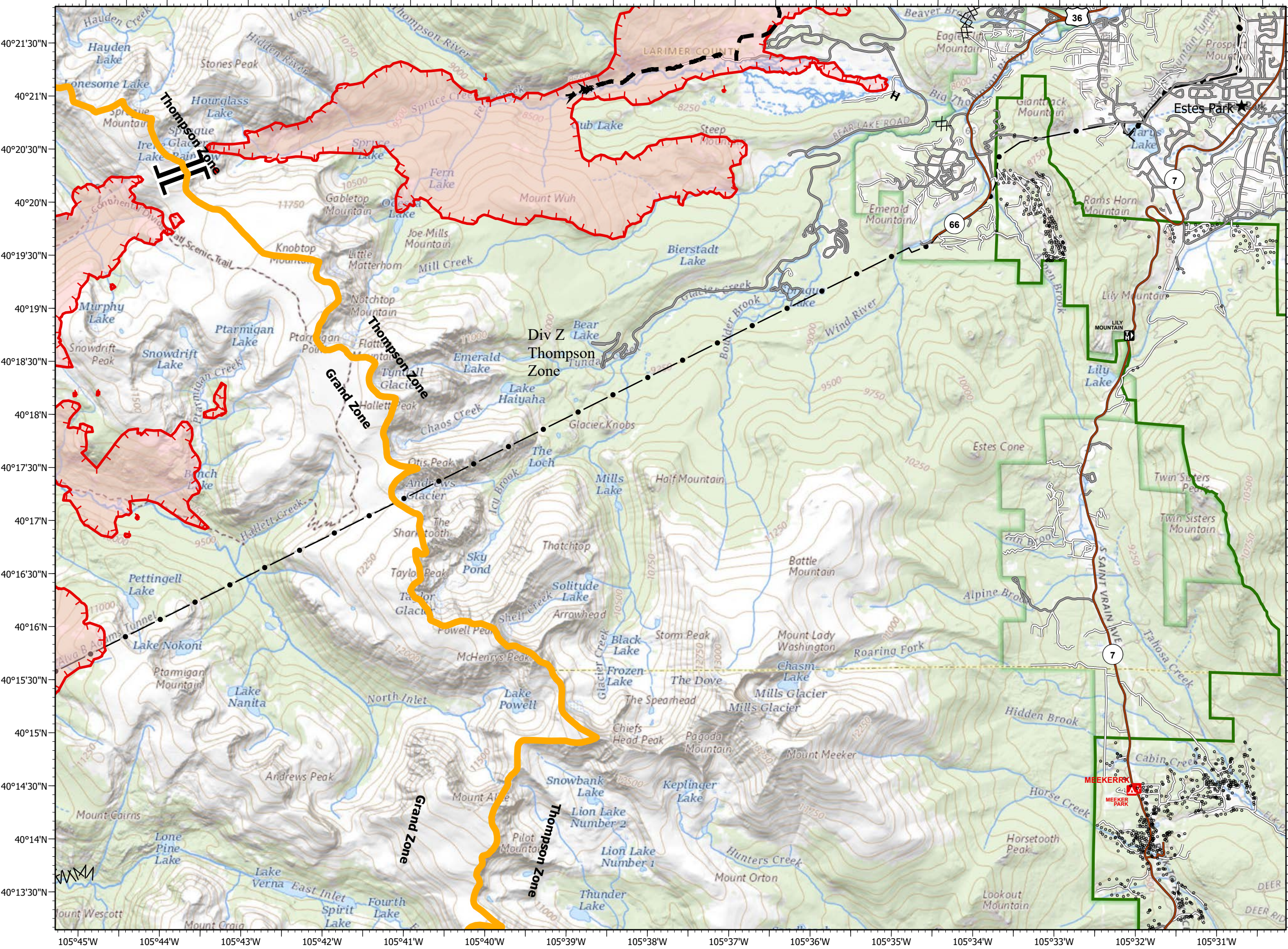
- Forest Powerline Data**
- PubServCo\_CLC411113
  - MtnPrksElectricInc

- Utilities**
- Power Lines
  - Gas Line
  - Res. Structures
  - Structures Centroids
  - Structure Footprints
  - Zone Break

Fire Perimeter as of 10/31/20 1356 hrs  
 193,774 Total Acres  
 188,910 Grand Zone  
 4,864 Thompson Zone



BRANCH II			
A1	A2	A3	A4
Div I		Div F	
B1	B2	B3	B4
Div K		Div C	
Div M			
C1	C2	C3	C4
Div RX		Div ZA	
BRANCH I			
D1	D2	D3	

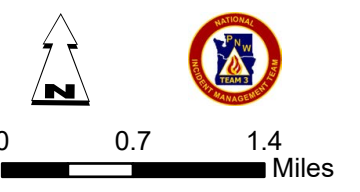




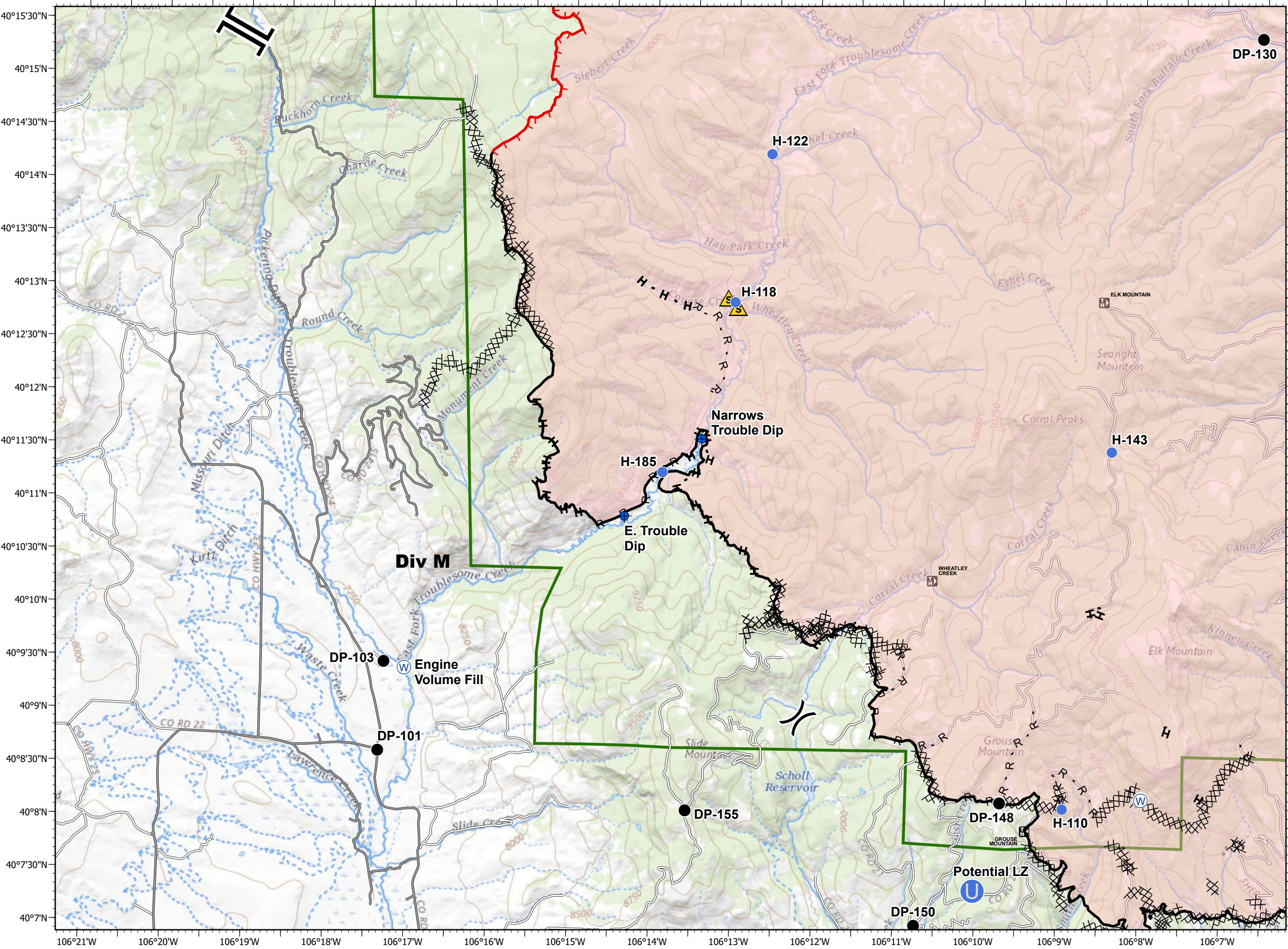
IAP - Page Name: C1  
**EAST TROUBLESOME CREEK - GRAND ZONE**  
**WY-MRF-000408**  
**11/01/2020**

- Dip Site
- Drop Point
- Unimproved Landing Area
- Helispot
- Safety Zone
- Water Source
- Division Break
- Branch Break
- Uncontrolled Fire Edge
- Contained Line
- Completed Dozer Line
- Completed Hand Line
- Road as Completed Line
- Fire Perimeter
- Forest Powerline Data**
- PubServCo\_CLC411113
- MtnPrksElectricInc
- Utilities**
- Power Lines
- Gas Line
- Res. Structures
- Structures Centroids
- Structure Footprints
- Zone Break

Fire Perimeter as of 10/31/20 1356 hrs  
 193,774 Total Acres  
 188,910 Grand Zone  
 4,864 Thompson Zone



BRANCH II		BRANCH I	
A1	A2	A3	A4
Div I		Div F	
B1	B2	B3	B4
Div K		Div C	
C1	C2	C3	C4
Div M		Div ZA	
D1	D2	D3	
BRANCH I		Div RX	



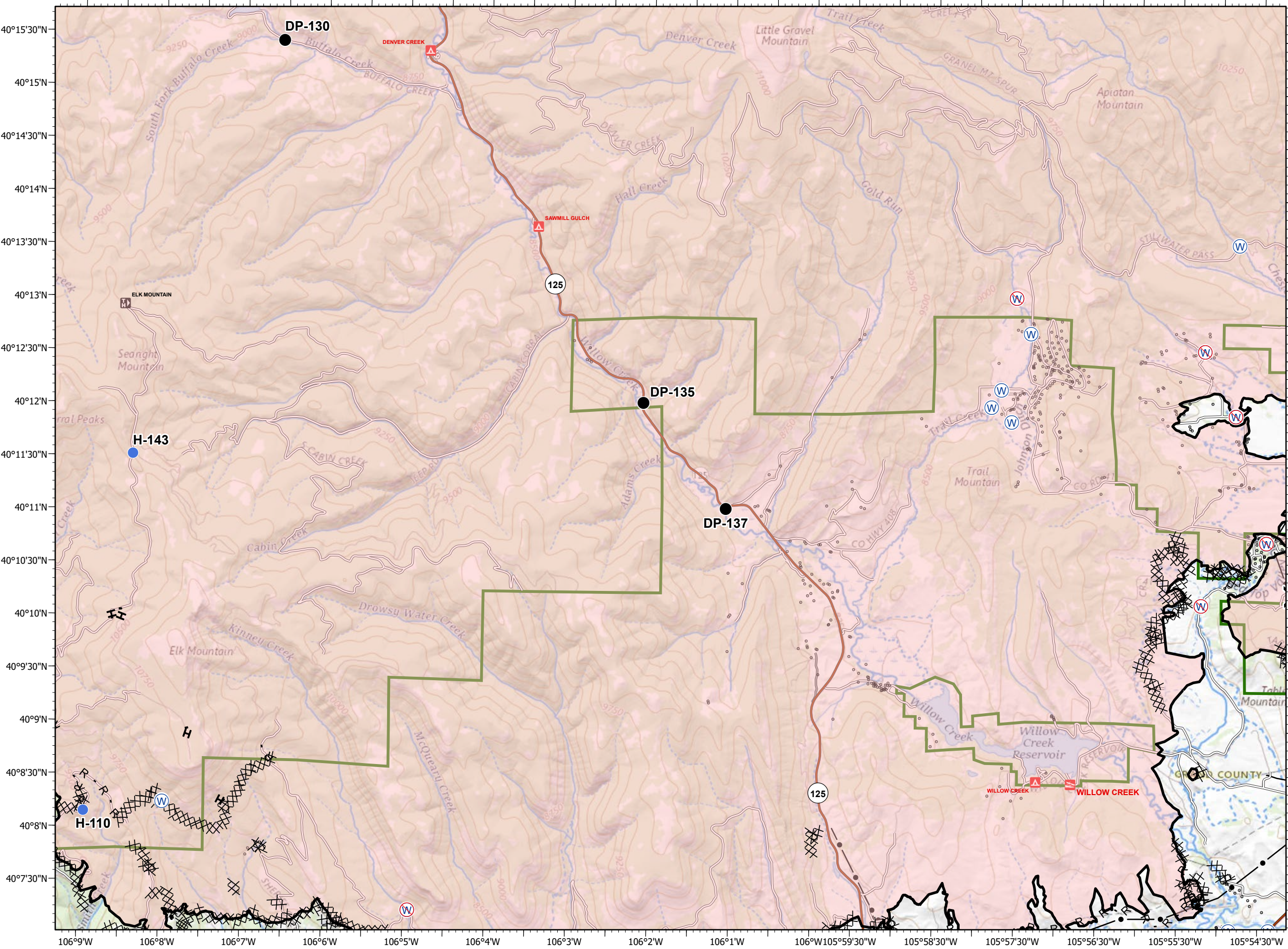
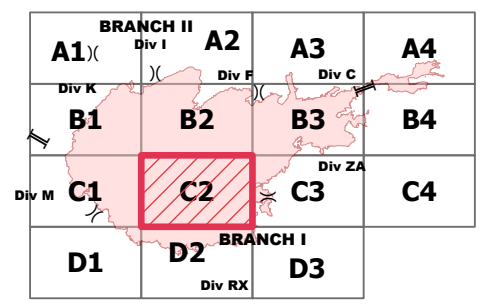
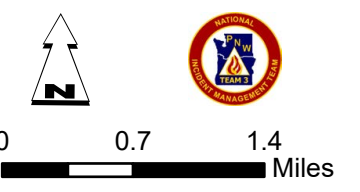


- Drop Point
- Helispot
- ⊕ Water Source
- ⊖ Restricted Water Source
- ) ( Division Break
- Contained Line
- ⊗ Completed Dozer Line
- H Completed Hand Line
- R Road as Completed Line
- ▭ Fire Perimeter

- Forest Powerline Data**
- PubServCo\_CLC411113
  - MtnPrksElectricInc

- Utilities**
- Power Lines
  - ⊕ Gas Line
  - Res. Structures
  - Structures Centroids
  - Structure Footprints
  - ▬ Zone Break

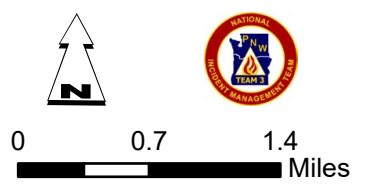
Fire Perimeter as of 10/31/20 1356 hrs  
 193,774 Total Acres  
 188,910 Grand Zone  
 4,864 Thompson Zone



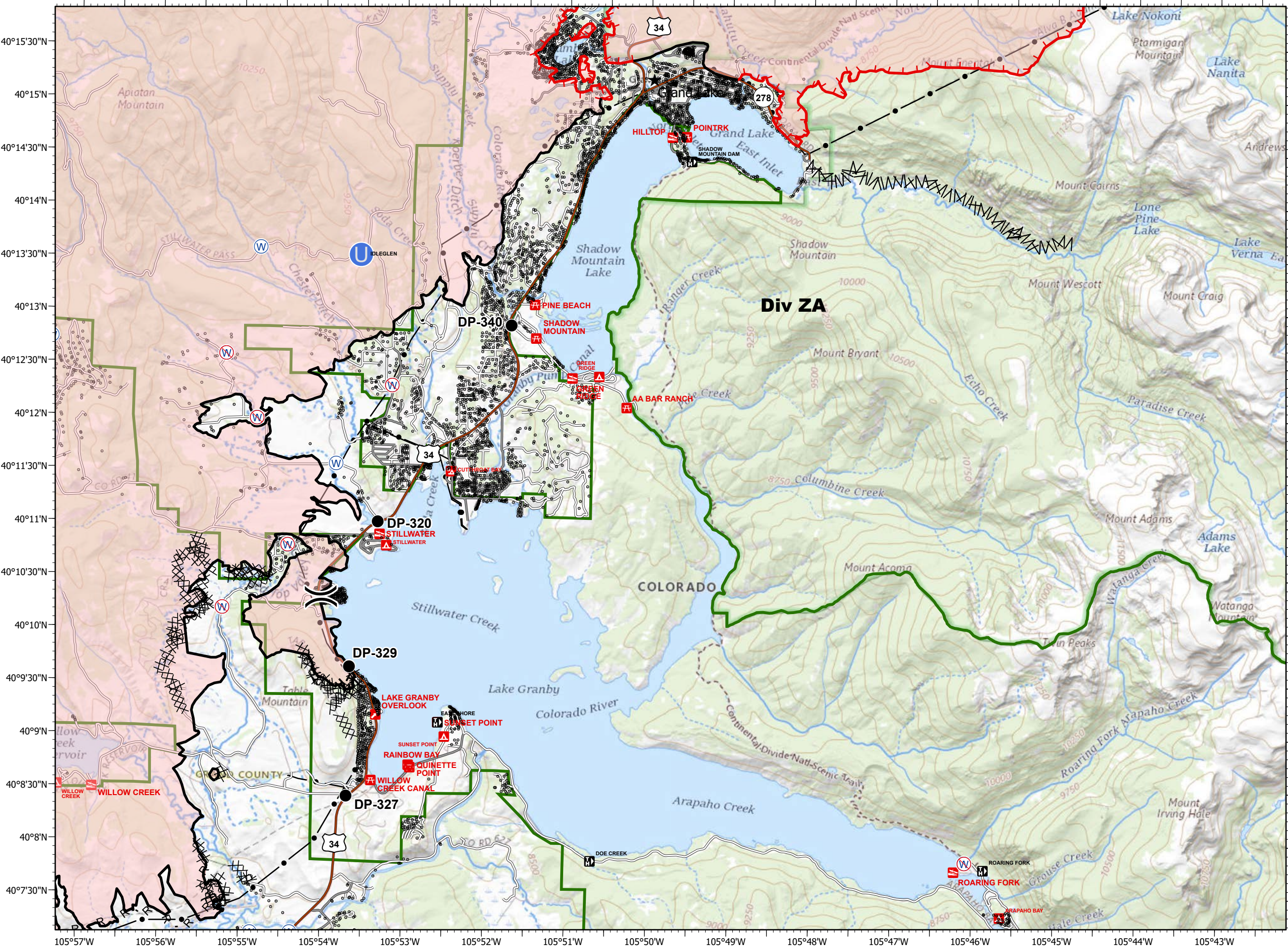


- Drop Point
- Unimproved Landing Area
- W Water Source
- W Restricted Water Source
- ) ( Division Break
- Uncontrolled Fire Edge
- Contained Line
- ⊗ Completed Dozer Line
- H Completed Hand Line
- R Road as Completed Line
- Λ Line Break Completed
- Fire Perimeter
- Forest Powerline Data
- PubServCo\_CLC411113
- MtnPrksElectricInc
- Utilities
- Power Lines
- ⊕ Gas Line
- Res. Structures
- Structures Centroids
- Structure Footprints
- Zone Break

Fire Perimeter as of 10/31/20 1356 hrs  
 193,774 Total Acres  
 188,910 Grand Zone  
 4,864 Thompson Zone







BRANCH II		BRANCH I	
A1	A2	A3	A4
B1	B2	B3	B4
C1	C2	C3	C4
D1	D2	D3	







# EAST TROUBLESOME CREEK - GRAND ZONE


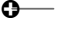




WY-MRF-000408  
11/01/2020

-  Zone Break
-  Uncontrolled Fire Edge
-  Line Break Completed
-  Fire Perimeter

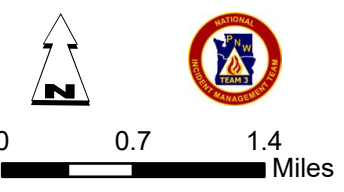
### Forest Powerline Data

-  PubServCo\_CLC411113
-  MtnPrksElectricInc

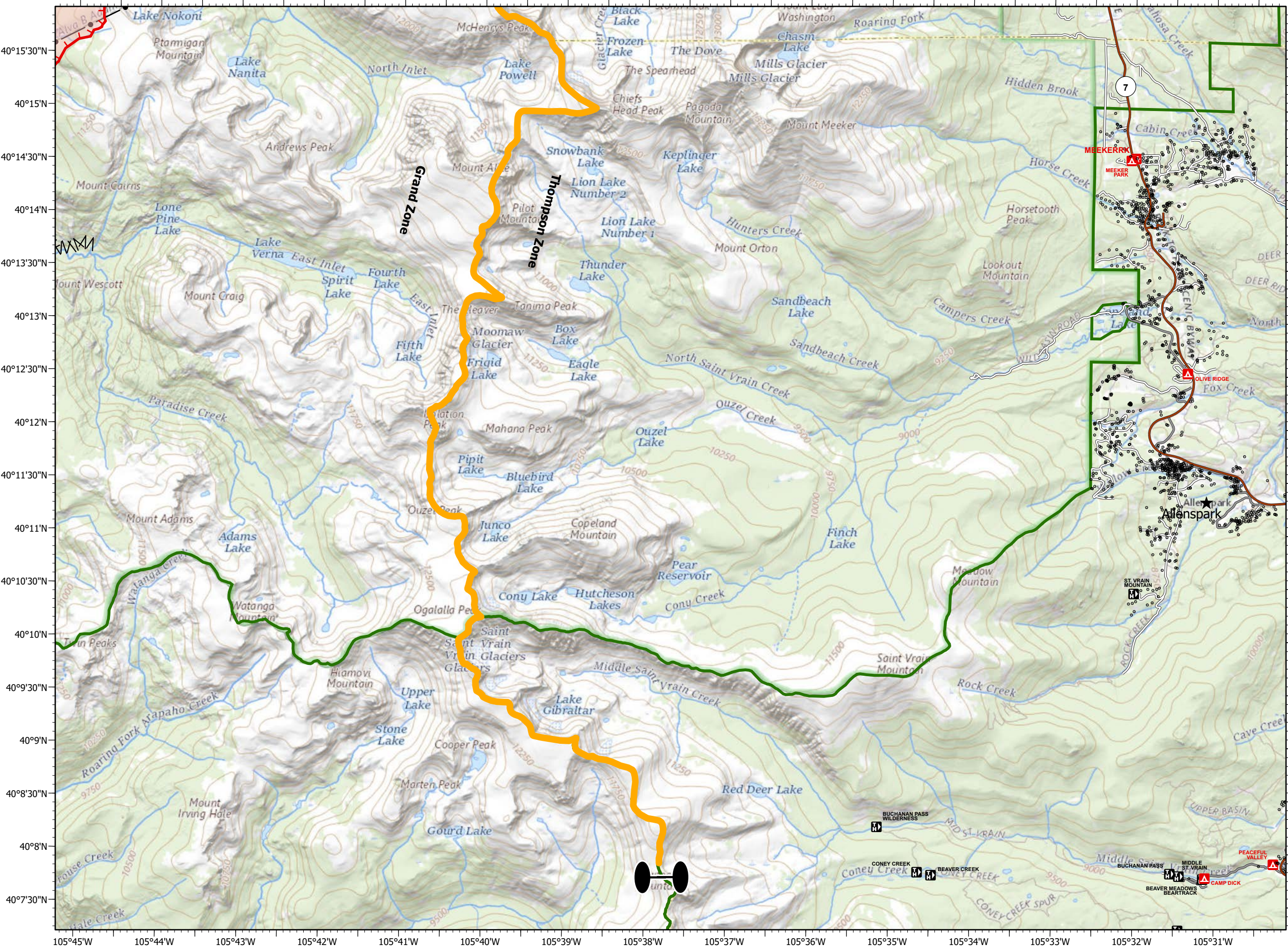
### Utilities

-  Power Lines
-  Gas Line
-  Res. Structures
-  Structures Centroids
-  Structure Footprints
-  Zone Break

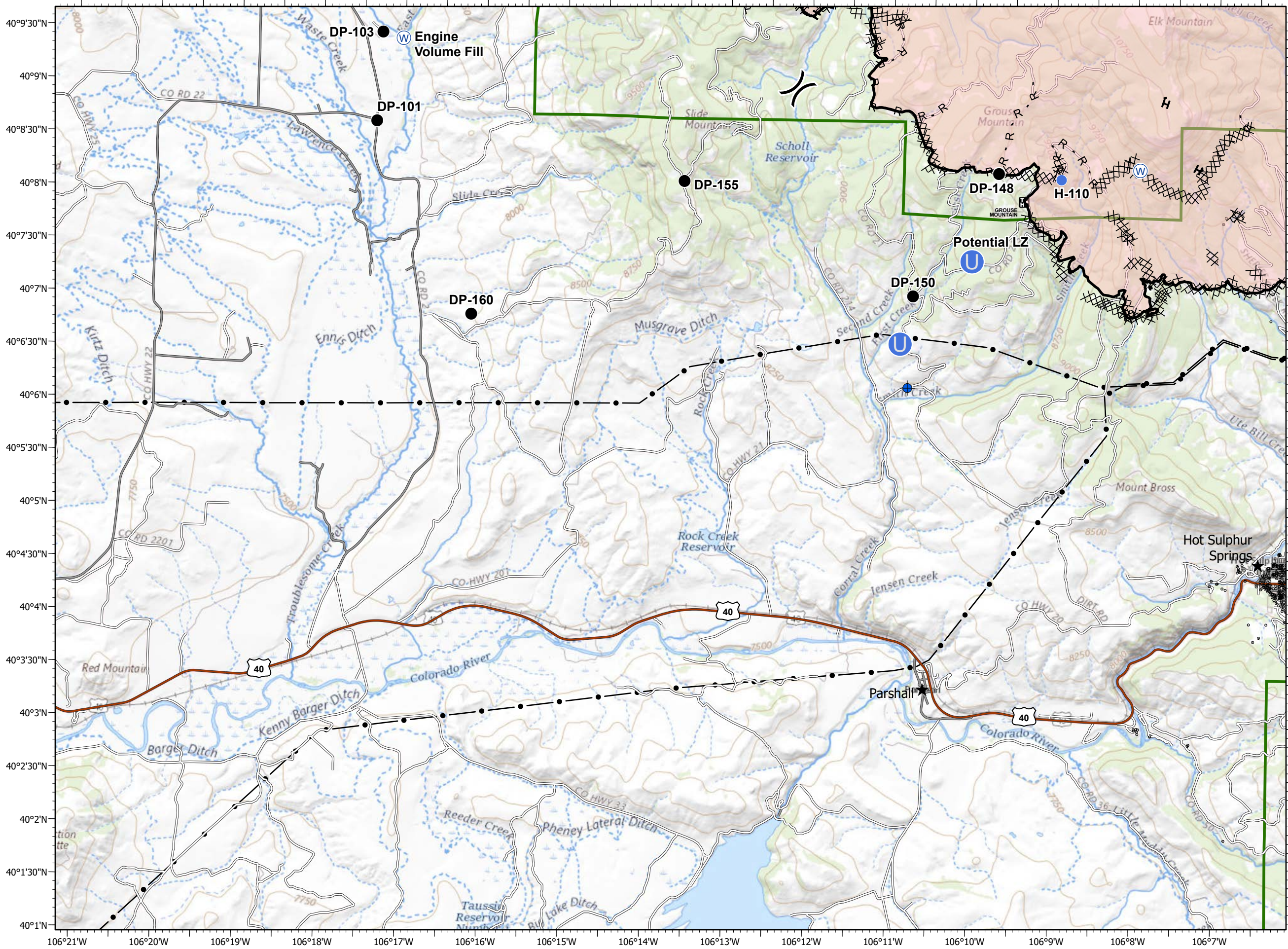
Fire Perimeter as of 10/31/20 1356 hrs  
 193,774 Total Acres  
 188,910 Grand Zone  
 4,864 Thompson Zone



BRANCH II			
A1	A2	A3	A4
Div I		Div C	
B1	B2	B3	B4
Div K		Div Z	
C1	C2	C3	C4
Div M		Div RX	
BRANCH I			
D1	D2	D3	

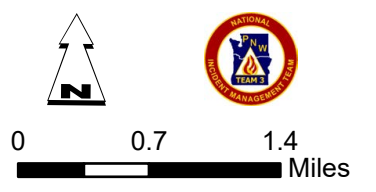






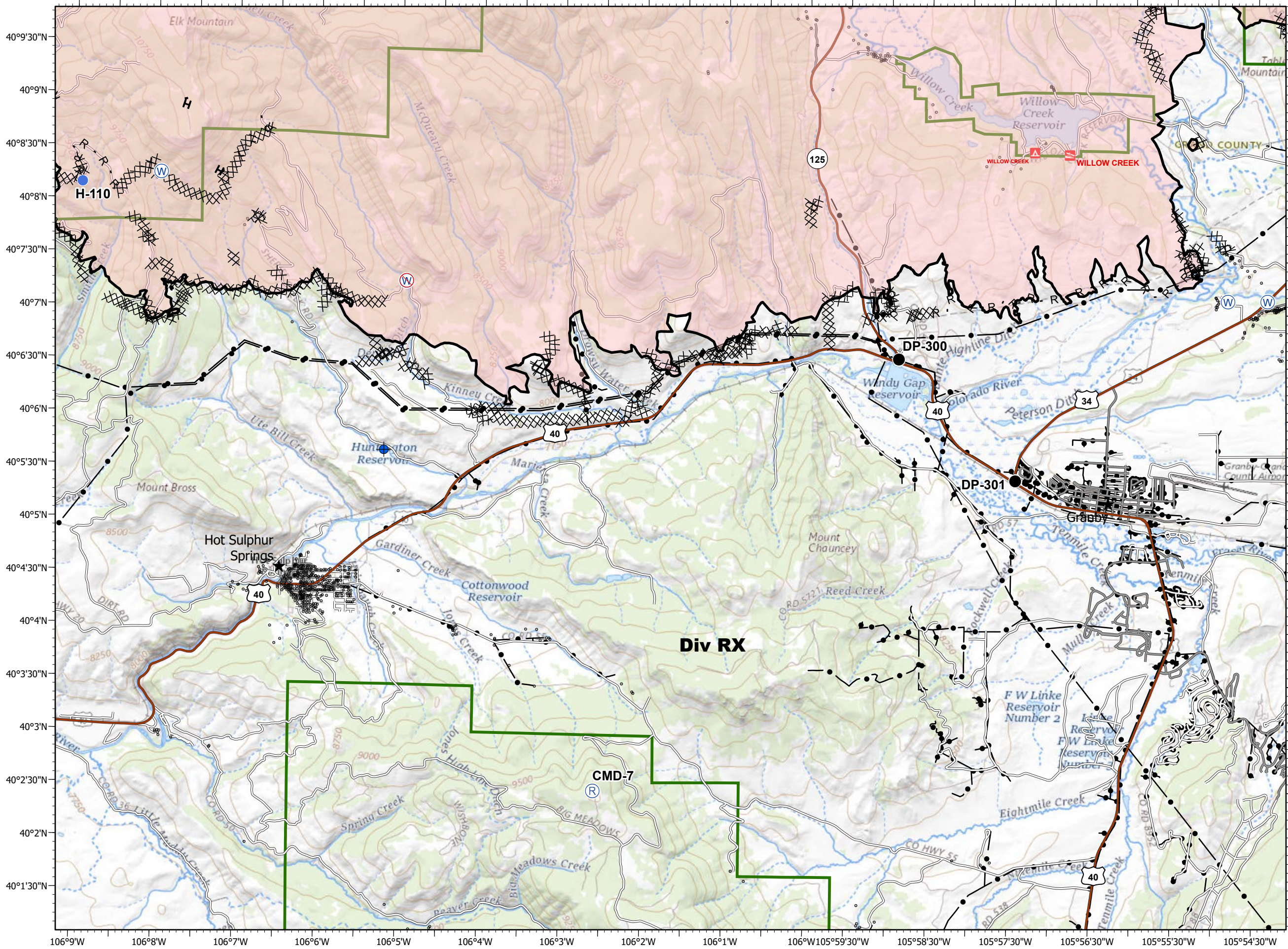
- Dip Site
  - Drop Point
  - Unimproved Landing Area
  - Helispot
  - Water Source
  - Division Break
  - Contained Line
  - Completed Dozer Line
  - Completed Hand Line
  - Road as Completed Line
  - Fire Perimeter
- Forest Powerline Data**
- PubServCo\_CLC411113
  - MtnPrksElectricInc
- Utilities**
- Power Lines
  - Gas Line
  - Res. Structures
  - Structures Centroids
  - Structure Footprints
  - Zone Break

Fire Perimeter as of 10/31/20 1356 hrs  
 193,774 Total Acres  
 188,910 Grand Zone  
 4,864 Thompson Zone



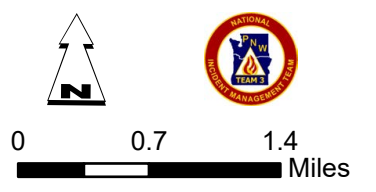
<b>BRANCH II</b>			
<b>A1</b> <small>Div I</small>	<b>A2</b> <small>Div F</small>	<b>A3</b> <small>Div C</small>	<b>A4</b>
<b>B1</b> <small>Div K</small>	<b>B2</b>	<b>B3</b> <small>Div ZA</small>	<b>B4</b>
<b>C1</b> <small>Div M</small>	<b>C2</b>	<b>C3</b>	<b>C4</b>
<b>D1</b>	<b>D2</b> <small>Div RX</small>	<b>BRANCH I</b> <b>D3</b>	





- Dip Site
- Drop Point
- Helispot
- Repeater
- Water Source
- Restricted Water Source
- Contained Line
- Completed Dozer Line
- Completed Hand Line
- Road as Completed Line
- Fire Perimeter
- Forest Powerline Data**
- PubServCo\_CLC411113
- MtnPrksElectricInc
- Utilities**
- Power Lines
- Gas Line
- Res. Structures
- Structures Centroids
- Structure Footprints
- Zone Break

Fire Perimeter as of 10/31/20 1356 hrs  
 193,774 Total Acres  
 188,910 Grand Zone  
 4,864 Thompson Zone



BRANCH II			
A1) Div I	A2 Div F	A3 Div C	A4
B1 Div K	B2	B3 Div ZA	B4
C1 Div M	C2	C3	C4
D1	D2 BRANCH I Div RX	D3	

**Div RX**

**CMD-7**

125

40

40

40

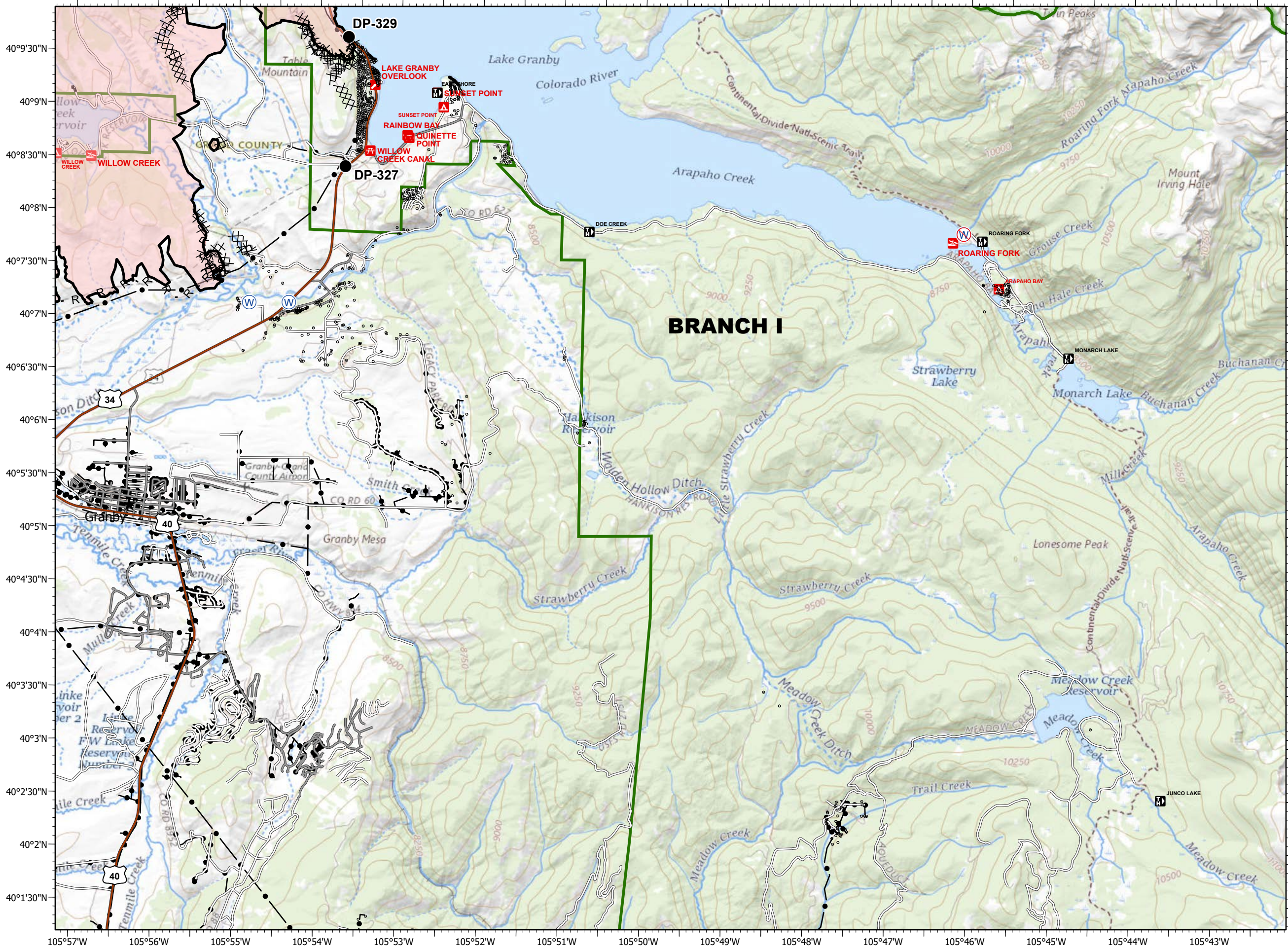
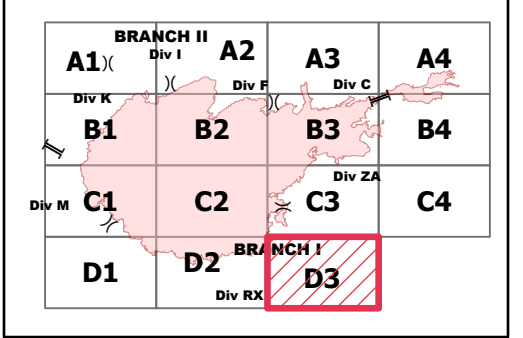
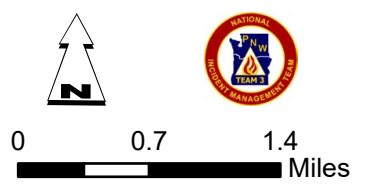
40°9'30"N  
40°9'N  
40°8'30"N  
40°8'N  
40°7'30"N  
40°7'N  
40°6'30"N  
40°6'N  
40°5'30"N  
40°5'N  
40°4'30"N  
40°4'N  
40°3'30"N  
40°3'N  
40°2'30"N  
40°2'N  
40°1'30"N

106°9'W  
106°8'W  
106°7'W  
106°6'W  
106°5'W  
106°4'W  
106°3'W  
106°2'W  
106°1'W  
106°W  
105°59'30"W  
105°58'30"W  
105°57'30"W  
105°56'30"W  
105°55'30"W  
105°54'30"W



- Drop Point
  - ⊕ Water Source
  - ⊖ Restricted Water Source
  - Contained Line
  - ⊗ Completed Dozer Line
  - H Completed Hand Line
  - R Road as Completed Line
  - Fire Perimeter
- Forest Powerline Data**
- PubServCo\_CLC411113
  - MtnPrksElectricInc
- Utilities**
- Power Lines
  - ⊕ Gas Line
  - Res. Structures
  - Structures Centroids
  - Structure Footprints
  - ▬ Zone Break

Fire Perimeter as of 10/31/20 1356 hrs  
 193,774 Total Acres  
 188,910 Grand Zone  
 4,864 Thompson Zone



40°9'30"N  
 40°9'N  
 40°8'30"N  
 40°8'N  
 40°7'30"N  
 40°7'N  
 40°6'30"N  
 40°6'N  
 40°5'30"N  
 40°5'N  
 40°4'30"N  
 40°4'N  
 40°3'30"N  
 40°3'N  
 40°2'30"N  
 40°2'N  
 40°1'30"N

105°57'W 105°56'W 105°55'W 105°54'W 105°53'W 105°52'W 105°51'W 105°50'W 105°49'W 105°48'W 105°47'W 105°46'W 105°45'W 105°44'W 105°43'W